

Sponsored Program Summary
2nd Quarter, FY14
February 21, 2014

Dave Reed
Vice President for Research

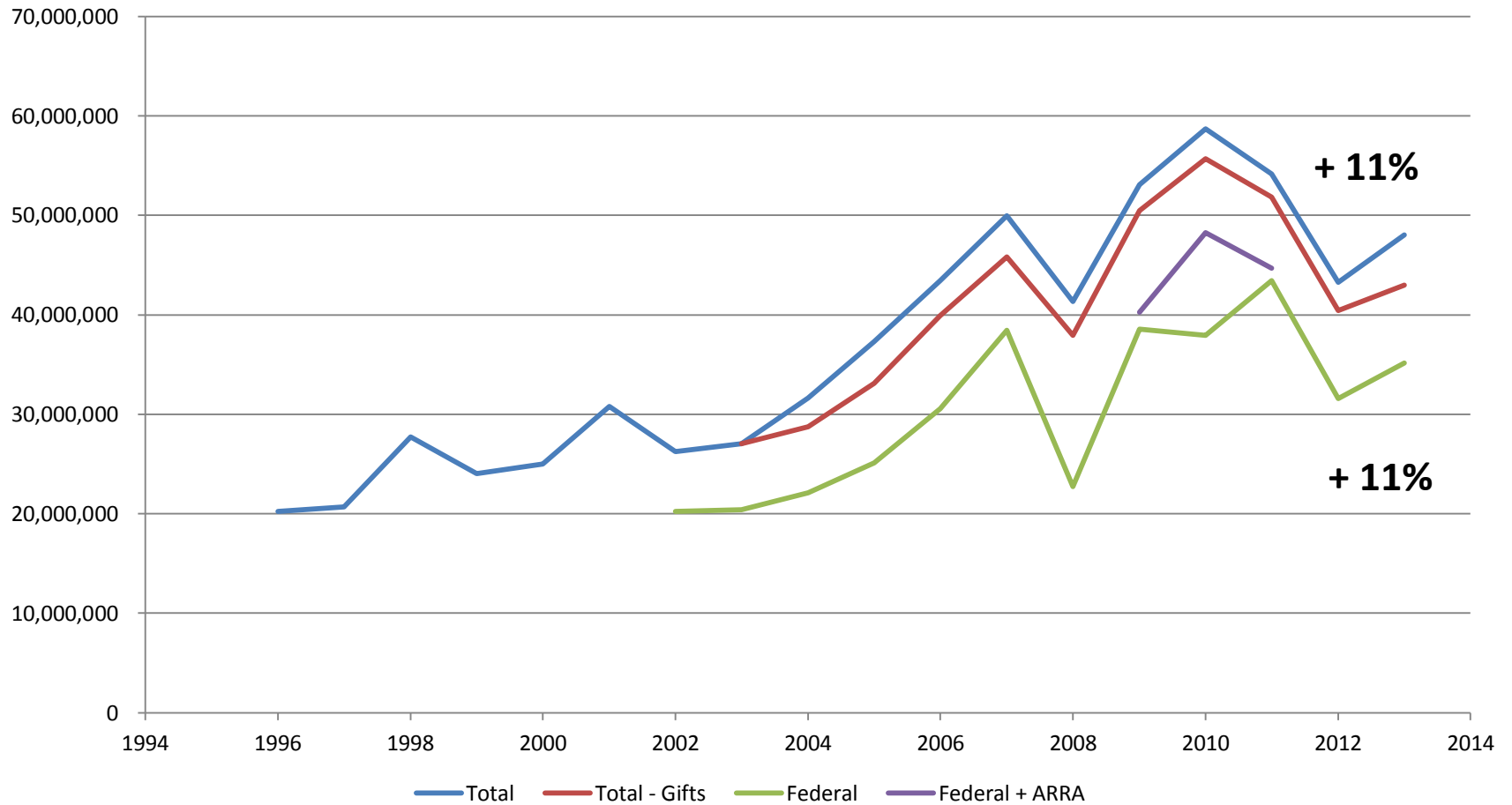
Michigan Tech

Outline

- Sponsored Awards, 2nd Qtr FY14
- Research Expenditures, 2nd Qtr FY14
- Intellectual Property/Commercialization, 2nd Qtr, FY14
- Corporate Sponsorship, 2nd Qtr FY14
- Centers and Institutes

Michigan Tech

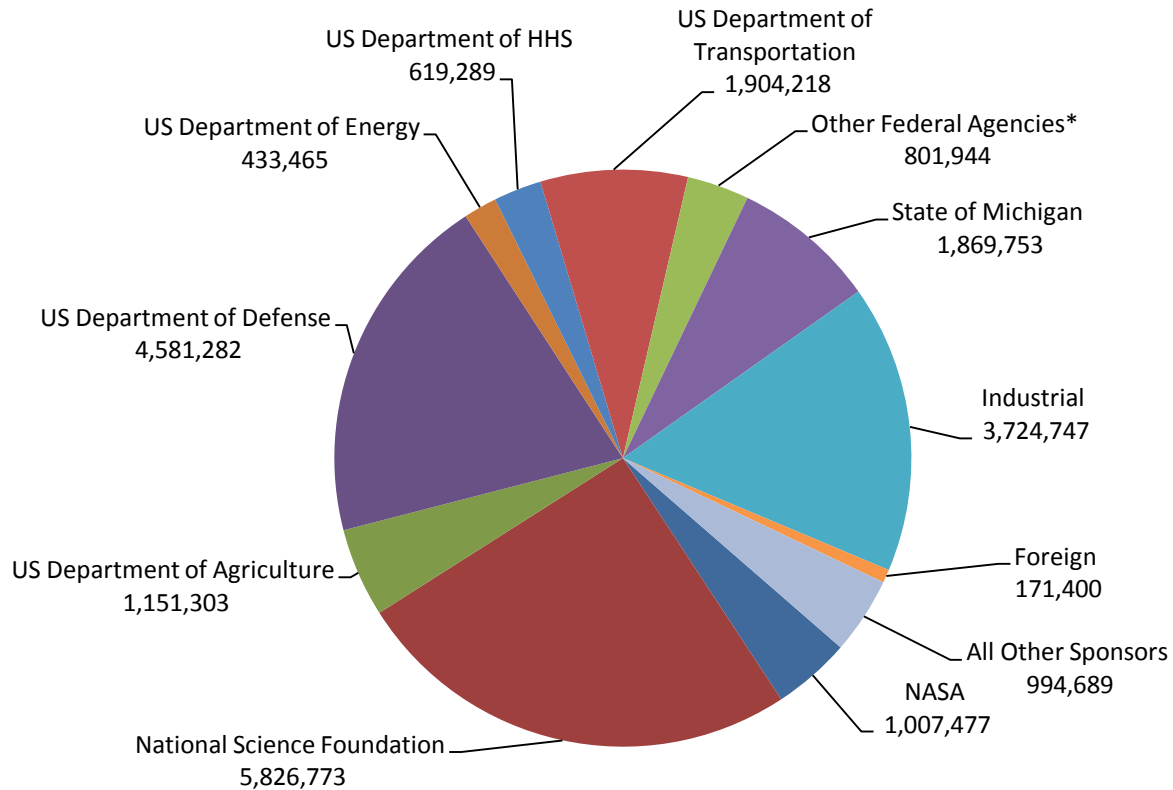
FY13 Sponsored Program Awards



Sponsored Awards, 2nd Qtr FY14

Sponsored Awards
Fiscal Year 2014
2nd Quarter
Ended December 31,
2013
TOTAL: \$24,808,283

ARRA Funding
FY2009: 1,688,723
FY2010: 10,334,230
FY2011: 1,230,780
FY2012: 35,895
Total \$ 13,289,628



Sponsored Awards, 2nd Qtr FY14

Sponsor	Proposals Submitted		Awards Received		Awards Received (\$)		Variance \$	Variance %
	FY '14 as of 12/31	FY '13 as of 12/31	FY '14 as of 12/31	FY '13 as of 12/31	FY '14 as of 12/31	FY '13 as of 12/31		
NASA	38	59	15	22	1,007,477	2,585,530	-1,578,053	-61.0%
National Science Foundation	103	137	35	48	5,826,773	7,398,242	-1,571,469	-21.2%
US Department of Agriculture	41	37	40	36	1,151,303	1,084,111	67,192	6.2%
US Department of Defense	29	39	37	36	4,581,282	5,002,561	-421,279	-8.4%
US Department of Education	-	-	-	2	-	107,827	-107,827	-100.0%
US Department of Energy	11	14	8	5	433,465	543,356	-109,891	-20.2%
US Department of HHS	16	21	6	6	619,289	322,287	297,002	92.2%
US Department of Transportation	11	20	10	17	1,904,218	2,198,679	-294,461	-13.4%
Other Federal Agencies*	25	16	17	16	801,944	409,309	392,635	95.0%
Federal Agency Total	274	343	168	188	16,325,751	19,651,902	-3,326,151	-16.9%
State of Michigan	12	14	11	13	1,869,753	663,022	1,206,731	182.0%
Industrial	126	99	109	79	3,724,747	2,652,123	1,072,624	40.4%
Foreign	11	9	3	4	171,400	152,640	18,760	12.3%
All Other Sponsors	37	51	26	29	994,689	654,816	339,873	51.9%
Subtotal	460	516	317	313	23,086,340	23,774,503	-688,163	-2.9%
Gifts**	-	-	192	153	1,707,597	2,713,931	-1,006,334	-37.1%
Crowd Funding	-	-	-	-	14,346	3,605	10,741	297.9%
Grand Total	460	516	509	466	\$24,808,283	\$26,492,039	-\$1,683,756	-6.4%

* US Dept of the Interior, US Dept of Commerce, National Endowments for the Arts & Humanities, US Environmental Protection Agency, US Dept of State, US Dept of Labor, US Small Business Administration, US Fish & Wildlife Service

**Gifts represent non-contractual funding from corporations, foundations, associations and societies in support of academic programs, scholarships/fellowships, student design & enterprise, research, youth programs and special programs.



Sponsored Awards, 2nd Qtr FY14

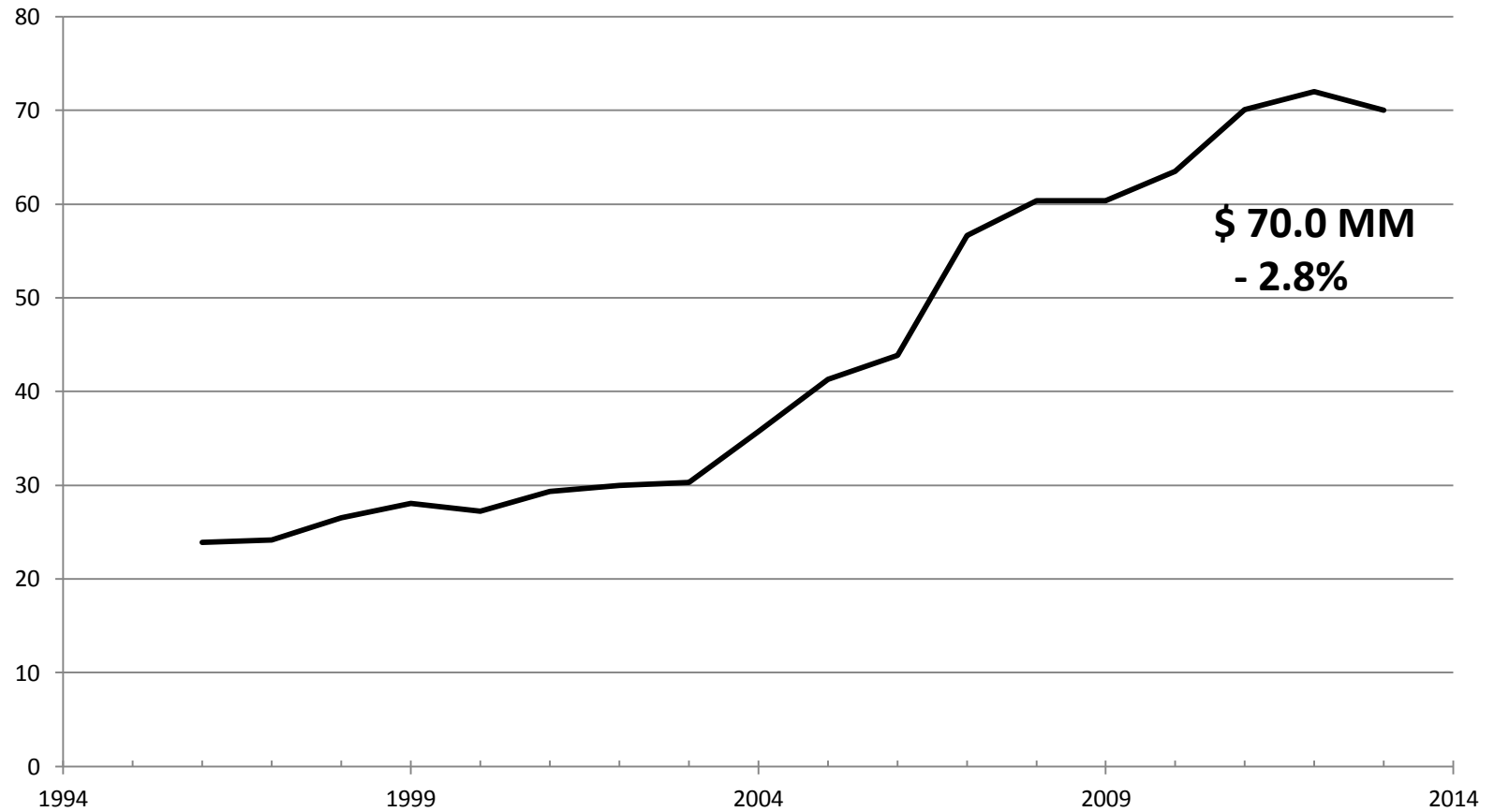
Sponsor	Proposals Submitted		Awards Received		Awards Received (\$)		Variance \$	Variance %
	FY '14	FY '13	FY '14	FY '13	FY '14	FY '13		
	as of 12/31	as of 12/31	as of 12/31	as of 12/31	as of 12/31	as of 12/31		
NASA	38	59	15	22	1,007,477	2,585,530	-1,578,053	-61.0%
National Science Foundation	103	137	35	48	5,826,773	7,398,242	-1,571,469	-21.2%
US Department of Agriculture	41	37	40	36	1,151,303	1,084,111	67,192	6.2%
US Department of Defense	29	39	37	36	4,581,282	5,002,561	-421,279	-8.4%
US Department of Education	-	-	-	2	-	107,827	-107,827	-100.0%
US Department of Energy	11	14	8	5	433,465	543,356	-109,891	-20.2%
US Department of HHS	16	21	6	6	619,289	322,287	297,002	92.2%
US Department of Transportation	11	20	10	17	1,904,218	2,198,679	-294,461	-13.4%
Other Federal Agencies*	25	16	17	16	801,944	409,309	392,635	95.9%
Federal Agency Total	274	343	168	188	16,325,751	19,651,902	-3,326,151	-16.9%
State of Michigan	12	14	11	13	1,869,753	663,022	1,206,731	182.0%
Industrial	126	99	109	79	3,724,747	2,652,123	1,072,624	40.4%
Foreign	11	9	3	4	171,400	152,640	18,760	12.3%
All Other Sponsors	37	51	26	29	994,689	654,816	339,873	51.9%
Subtotal	460	516	317	313	23,086,340	23,774,503	-688,163	-2.9%
Gifts**	-	-	192	153	1,707,597	2,713,931	-1,006,334	-37.1%
Crowd Funding	-	-	-	-	14,346	3,605	10,741	297.9%
Grand Total	460	516	509	466	\$24,808,283	\$26,492,039	-\$1,683,756	-6.4%

* US Dept of the Interior, US Dept of Commerce, National Endowments for the Arts & Humanities, US Environmental Protection Agency, US Dept of State, US Dept of Labor, US Small Business Administration, US Fish & Wildlife Service

**Gifts represent non-contractual funding from corporations, foundations, associations and societies in support of academic programs, scholarships/fellowships, student design & enterprise, research, youth programs and special programs.



Research Expenditures, FY13



Michigan Tech

Research Expenditures, 2nd Qtr FY14

Michigan Technological University				
Total Research Expenditures by College/School/Division				
Fiscal Year 2014 & 2013				
As of December 31, 2013 and December 31, 2012				
College/School/Division	FY2014	FY2013	Variance	%
Administration*	2,443,953	1,457,101	986,852	67.7%
College of Engineering	11,860,861	11,464,953	395,908	3.5%
College of Science & Arts	6,137,197	6,441,998	(304,801)	-4.7%
Institute for Leadership and Innovation (ILI)	166,938	149,446	17,492	11.7%
Keweenaw Research Center (KRC)	3,770,719	4,147,454	(376,735)	-9.1%
Michigan Tech Research Institute (MTRI)	5,348,823	4,789,797	559,026	11.7%
Michigan Tech Transportation Institute (MTTI)	76,546	284,194	(207,648)	-73.1%
School of Business & Economics	665,665	835,655	(169,990)	-20.3%
School of Forest Resources & Environmental Science	2,875,138	3,528,654	(653,516)	-18.5%
School of Technology	236,859	173,023	63,836	36.9%
Total	33,582,699	33,272,275	310,424	0.9%
*Includes the Vice Presidents, Provost, CIO, CFO and others who report to a VP, Provost or the President. Except for the research institutes that report to the VPR.				
**FY 2013 Includes \$484,938 of ARRA Funding				
**FY 2014 Includes \$137,357 of ARRA Funding				



Intellectual Property, 2nd Qtr FY14

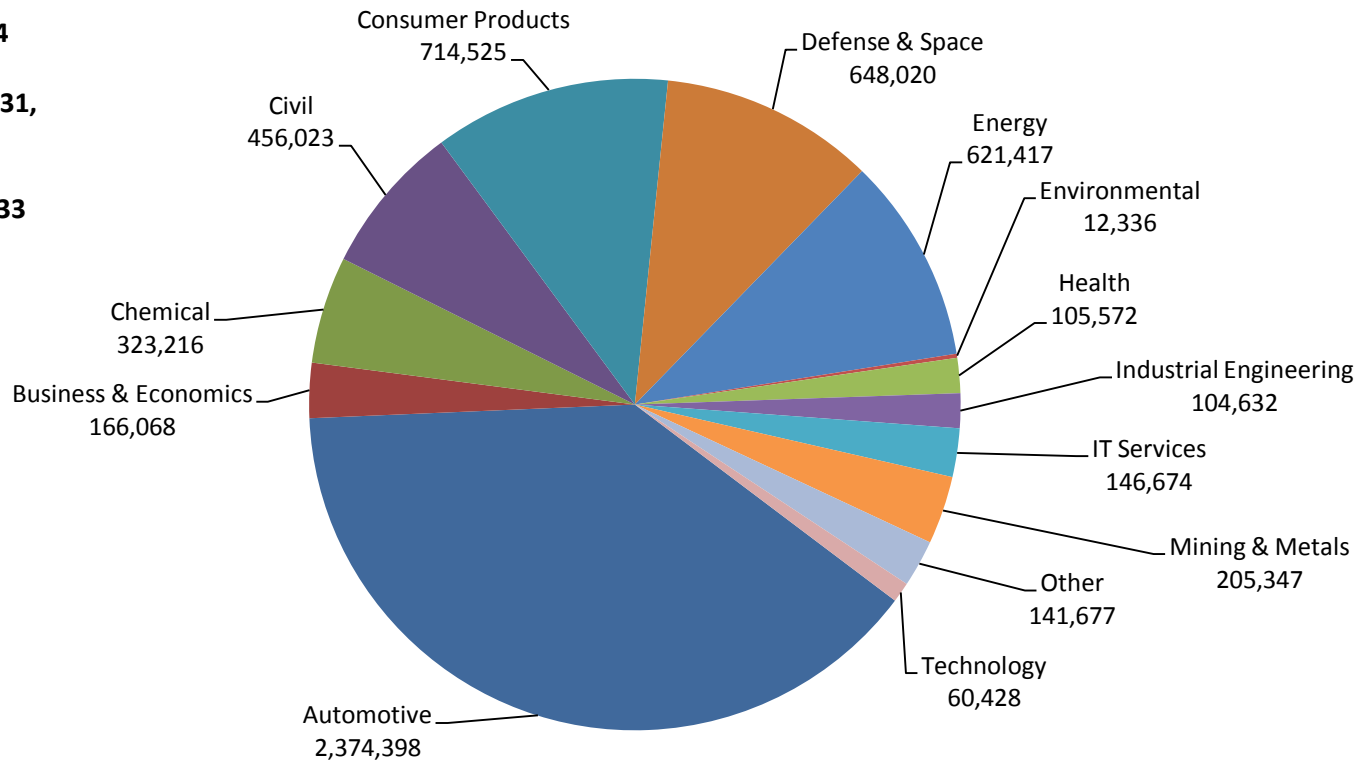
Disclosures Received ²	22	23	-4.3%
Nondisclosure Agreements	48	52	-7.7%
Patents Filed or Issued ²	11	13	-15.4%
License Agreements	7	16	-56.3%
Gross Royalties	119,514	92,420	29.3%

Michigan Tech

Corporate Sponsorship, 2nd Qtr FY14

Sponsored Awards
-Industry-
COMBINED*
Fiscal Year 2014
2nd Quarter
Ended December 31,
2013

TOTAL: \$6,080,333



Michigan Tech

Centers and Institutes

Michigan Tech STUDENTS FACULTY / STAFF ALUMNI PARENTS Search this site A TO Z

RESEARCH

Research > VP for Research Office > Centers and Institutes

ADMINISTRATION

- VP for Research Office**
- Centers and Institutes -
- Internal Awards -
- Research Advisory Council -
- Expertise -
- Stats -
- Budget Office -
- Facility Support -

Integrity and Compliance

Sponsored Programs

Innovation and Industry Engagement

RESOURCES FOR . . .

ARCHIVES

REFERENCES

Research Centers and Institutes

Research Centers and Institutes help to promote interdisciplinary work that involves faculty from several different departments on and off campus. Center directors who are also tenure-track faculty are expected to spend a minimum of 20 percent of their time during the academic year supporting center activities and administration. This effort is recognized as part of their service and research effort and should be reflected appropriately in the departmental index.

Advanced Power Systems Research Center (APSRC)	▼
Advanced Sustainable Iron and Steel Center (ASISC)	▼
Biotechnology Research Center (BRC)	▼
Center for Agile and Interconnected Microgrids (AIM)	▼
Center for Computer Systems Research (CCSR)	▼
Computational Science and Engineering Research Institute (CSERI)	▼
Earth, Planetary and Space Sciences Institute (EPSSI)	▼
Lake Superior Ecosystem Research Center (LaSER)	▼
Ecosystem Science Center (ESC)	▼
Great Lakes Research Center (GLRC)	▼
Center for Water and Society (CWS)	▼
Institute for Leadership and Innovation (ILI)	▼
Institute of Materials Processing (IMP)	▼
Keweenaw Research Center (KRC)	▼
Michigan Tech Research Institute (MTRI)	▼
Michigan Tech Transportation Institute (MTTI)	▼
Multi-Scale Technologies Institute (MuSTI)	▼
Power and Energy Research Center (PERC)	▼
Pre-College Innovative Outreach Institute (PIOI)	▼
Sustainable Futures Institute (SFI)	▼

RESOURCES

- Process to establish a research center or institute (PDF)
- Suggested signature page (Word)
- Awards and expenditures for research centers and institutes (FY08-12) (Excel)
- Institutional Research and Development Funds (IRAD)
- Annual Report Guidelines

Centers and Institutes

- 22 in Total, \$44.8 million in FY12
- Each is different, but several groups:
 - MTRI and KRC, completely “soft” funded
 - MTTI and GLRC, some “soft” and some “academic”
 - “Academic” Centers and Institutes, typically have a tenured faculty member as a Director

Centers and Institutes

- Centers and Institutes are quite dynamic - recently [over about the last year]:
 - CISSIC Ended
 - MIMC Changed their name to Agile and Interconnected Microgrids [AIM]
 - IIS, IGLE, and CenTILE merged to create the Institute for Leadership and Innovation [ILI]
 - Great Lakes Research Center [GLRC] was established
 - CWS became affiliated with GLRC
 - Pre-College Innovative Outreach Institute [PIOI] was established

Michigan Tech