

# Accommodation

Accommodation is a vital part of your experience in a new country. Your new home is an important part of your study experience. Each school has specially chosen options to help make the most out of your stay. Student residences offer different accommodation experiences, but always meet the highest standards.

All accommodation options are based on availability. Please make sure you check with your representative if we have availability

## What accommodation option should I choose?

The choice of accommodation depends on your preferences, needs, and budget. Below are some important factors you need to consider.

### Student residence

Convenient location, typically close to campus.

Easy access to good facilities and nearby amenities.

24h reception.

Noise levels might be high.

Might be sharing facilities with other students.

Might be expensive.

### Shared apartments

Meet other students from all over the world.

Easier to socialise.

Can be more affordable.

May have to deal with shared chores and responsibilities.

You might not be able to choose your flatmates.

### Studio

Will have more privacy.

No need to share your kitchen or bathroom with others.

Conveniently located near campus.

Might be expensive.

Less engagements and social interactions with others.

## Booking student accommodation in 3 simple steps

### Step 1

You can indicate your preferred type of accommodation (homestay, shared apartment or residence) on the application form during your application for a course. Our Student Services team will record the preferred choice of accommodation.

### Step 2

EP will be able to secure the accommodation option once the invoice has been paid. Our team will send you the accommodation confirmation with further details on the selected option.

### Step 3

You will need to confirm your arrival and send your flight details to our team, as soon as the flight is booked and no later than one week before the flight date. Our team will be able to book and confirm your accommodation and/ or transfers and provide more details within the confirmation document.

# ESAW Student Accommodation

Experience ESAW's great location, close to Downtown Dubai and within walking distance to shops, restaurants, malls and a ten-minute taxi or bus ride to the nearest metro Station in Dubai.

- Shared and private bedrooms
- Spacious, fully equipped and furnished apartments
- Laundry facility on site
- High speed Wi-Fi
- Cleaning
- Bed linen
- 24hr security
- Free shuttle bus for 4 weeks
- Study room/ game room/ mini cinema
- Gym
- CCTV cameras in the common areas

**Address:** Al Khail Gate phase 1 Building 11  
26th St - Al Quoz - Dubai

## About the Residence

### Accommodation types:

Premium studio (couples);  
Twin room shared bathroom with 4 or 5 students.

*Please consult us for up to date pricing.*

**Bedrooms:** The bedroom contains the following (per student): bed, wardrobe, pillow, bedding, study desk, chair.

**Bed size:** Single bed or double bed (depends on the room type).

**Bathroom:** Shared bathroom = 1 to 5 students maximum sharing depending on the room type. Welcome Kit = 1 Shampoo, 1 shower gel and 1 roll of toilet paper upon arrival.

**Kitchen:** The in-unit kitchen contains the following: fridge-freezer, stove, microwave, kettle. Kitchen is shared by 1 to 5 maximum students.

**Facilities:** Spacious lobby, study room, Wifi. Tv room, mini cinema, game room, gym and laundry room onsite.

**Extra cost facilities:** Dryer Machine: 50 min AED 2/ 65 min AED 3;  
Kitchen utensils: AED 99 that includes new one sauce pan, one frying pan, one bowl, one plate, knife/spoon/fork.

**Neighbourhood:** 10 min away walking distance: Nearby community centre, medical facilities, malls, supermarkets and gym.

**Visitors/guests:** Visitors are allowed to meet in the common areas.

**Noise:** Residents are required to respect all other residents and maintain a level of noise that does not disturb others. Quiet hours are 10pm - 8am.

**Smoking:** All facilities and residents' room are non-smoking. Smoking is allowed in the designated areas outdoors.

**Reception/security desk:** 24-hour reception and security desk.

**Cleaning service:** Deep cleaning service twice a week in the common area. Students are responsible for keeping their room clean. Change of bedding is not included. It is also students' responsibility to maintain cleanliness in all the areas, including the kitchen, by washing their dishes, pans and cutlery after cooking.

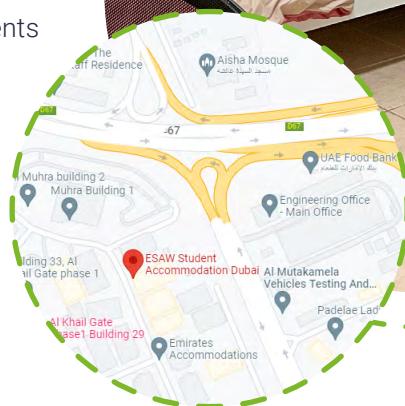
**Beddings/towels:** Fresh clean linens and bedding provided upon arrival. Students are responsible for washing their bedding regularly. Towels not provided.

**Minimum weeks requests:** 4 weeks minimum stay, however, daily bookings are accepted.

**Check-in/check-out:** Flexibility in check-in and check-out is possible based on the availability of rooms.

**Accommodation location:** Downtown: 30 min away by public transportation; 14 minutes by car/ taxi. On Passive Metro station (nearest metro station): 10 minutes by taxi or 24 min away by bus.

Kite Beach: 15 min away by taxi.  
JBR Beach: 25 min away by taxi.



# KSK Homes

## Student Residence

**KSK homes are ideally situated in Dubai Academic City, only 20km from Dubai International Airport and just minutes away from all the city's major avenues and attractions. Our hotel is tailored for the new generation of urban travelers, providing a modern and convenient stay experience.**

- 24-hour reception
- Outdoor swimming pool
- Free high-speed Wi-Fi
- Fitness centre
- Gaming area and PlayStation room
- Study rooms & open study area
- Reception & lobby area
- Flour lounge with shared kitchen

**Address: Al Rowayyah First - Academic Street  
- Academic City - Dubai**



### About the Residence

#### Accommodation types:

Single or double bedroom.

**Bedrooms:** All rooms are equipped with comfortable beds, fridge, drawer, wardrobe, multi-satellite LED TVs, work desk, safe box, bathroom amenities with walk-in shower.

**Things you need to bring:** This residence is offered on a self-catered basis. You will need to buy your own food and your toiletries.

**Kitchen:** The kitchen is equipped with a fridge, oven and hob, microwave. Tableware is also provided.

#### Extra cost facilities:

Laundry facilities (2 AED per 25-minutes of washing)  
Beauty centre  
Mini-market (open from 7am to 2am)  
Restaurant.

**Visitors/guests:** Visitors, including overnight guests, are not allowed.

**Noise:** Residents are required to respect all other residents and maintain a level of noise that does not disturb others. Quiet hours are 11 pm-7am.

**Cleaning service:** Rooms are cleaned before check in. Room cleaning is provided twice a week and weekly linen change.

**Beddings/towels:** Bedding, linen and towels are provided upon check in.

**Cleaning service:** Cleaning service once a week in bedrooms. Every day in the common area. Students are responsible for keeping their room and in general tidy and clean.

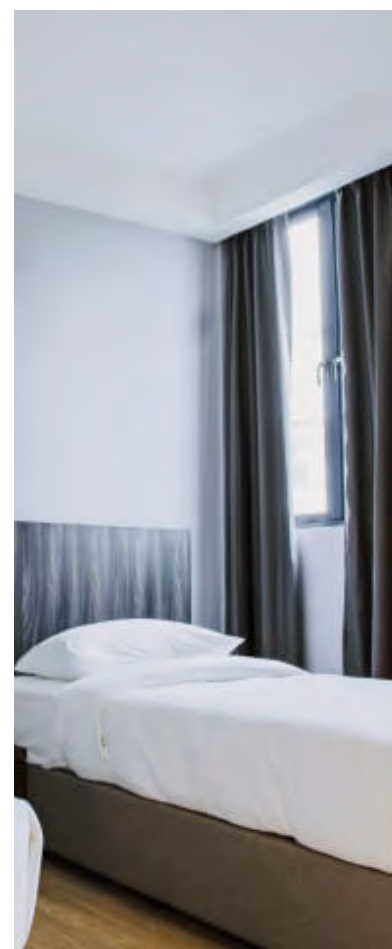
**Beddings/towels:** Fresh clean linen and bedding provided at check-in. Students responsible for cleaning after check-in. Towels not provided.

**Smoking:** No smoking allowed anywhere in the residence.

**Minimum weeks requests:** 2-week minimum stay.

**Check-in/check-out:** Check in is from 3pm / Check out is by 12pm.

**Important note:** To lock their rooms, students need to touch the fob key on the sensor once they close their room door, otherwise anyone can open it.



# School shuttle bus schedule

## Approximate timings

 **From KSK homes to EP Dubai campus** KSK homes

07:00    08:00    09:00    10:30    12:00    13:45    16:30    17:30    20:00

 **From EP Dubai campus to KSK homes**

07:45    08:55    09:55    12:00    13:00    15:20    17:30    18:30    22:00

Please note that the shuttle bus journey is approximately **40 minutes**. To avoid delays, please arrive **5 minutes before the trip**.

\*There is no **12:00** shuttle to EP Dubai Campus or **13:00** shuttle to Ksk homes on **Friday**.

 **From ESAW student accomodation to EP Dubai campus** ESAW

07:45    08:45    10:30    11:45    13:10\*    14:15    15:15    17:00    20:00

 **From EP Dubai campus to ESAW student accomodation**

08:15    09:15    12:30    13:40    16:00\*    17:30    18:30    22:00

Please note that the shuttle bus journey is approximately **60 minutes**. To avoid delays, please arrive **5 minutes before the trip**.

\*Timing changes to **12:45 PM** on **Fridays**.



# The Myriad

The Myriad Dubai, located in the heart of Dubai International Academic City, is a fully-integrated living community designed to meet the needs and desires of today's students. With a focus on safety, security, comfort, and convenience, it offers various exclusive facilities and features to enhance

- Dedicated blocks for men and women
- Recreational area, extra events
- Wi-Fi
- Gym on site, games arcade
- Swimming pool
- Shared kitchen
- Restaurants and cafes
- Parking
- 24hr security
- Free shuttle bus services

**Address:** The Myriad Dubai, Academic City - Dubai



## About the Residence

### Accommodation types:

Single en-suite room; Studio.

### Bedrooms:

The bedroom contains the following: single bed, pillow, blanket, bed linen, chair, desk, lighting, window, closet, fridge.

### Bathroom:

Private bathroom = 2 students maximum sharing it (Double room); Private bathroom = 1 Student using it only (Single and Studio rooms).

### Kitchen:

The shared kitchen contains the following: stove, oven, microwave, kettle, toaster, tables, chairs.

### Neighbourhood:

10 min walking distance to grocery store, Mcdonalds. Buses to Silicon Oasis.

### Visitors/guests:

Guests allowed only in the common areas except the swimming pool. Overnight guests are not allowed. Guests must leave no later than 11pm.

### Noise:

Residents are required to respect all other residents and maintain a level of noise that does not disturb others. No loud music or noise allowed after 11pm.

**Smoking:** All facilities and residents' room are non-smoking.

### Reception/security desk:

24-hour access.

### Cleaning service:

Cleaning service once a week in bedrooms. Every day in the common area. Students are responsible for keeping their room and in general tidy and clean.

### Beddings/towels:

Fresh clean linen and bedding provided at check-in. Students responsible for cleaning after check-in. Towels not provided.

### Facilities:

Jogging tracks, outdoor calisthenics gyms, basketball court, amphitheatre, indoor cinema, game room, free laundry rooms (washers, dryers and ironing facilities), rooftop swimming pools with lounge chairs and lifeguards on duty, supermarket.

### Minimum weeks requests:

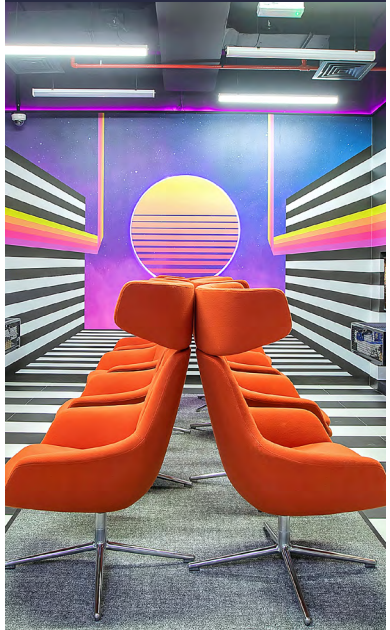
4 weeks minimum stay. Booking from Saturday to Saturday.

### Check-in/check-out:

Check in is any time after 4pm/Check out is any time before 10am.

### Close to your accommodation

- Lulu hypermarket**  
10 minutes by bus
- Centrepont Metro Station**  
15 minutes by taxi
- Downtown Dubai (Dubai Mall)**  
20 minutes by taxi
- Kite beach**  
30 minutes by taxi
- School**  
40 minutes by bus

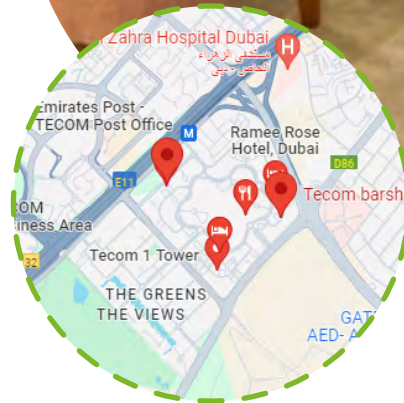
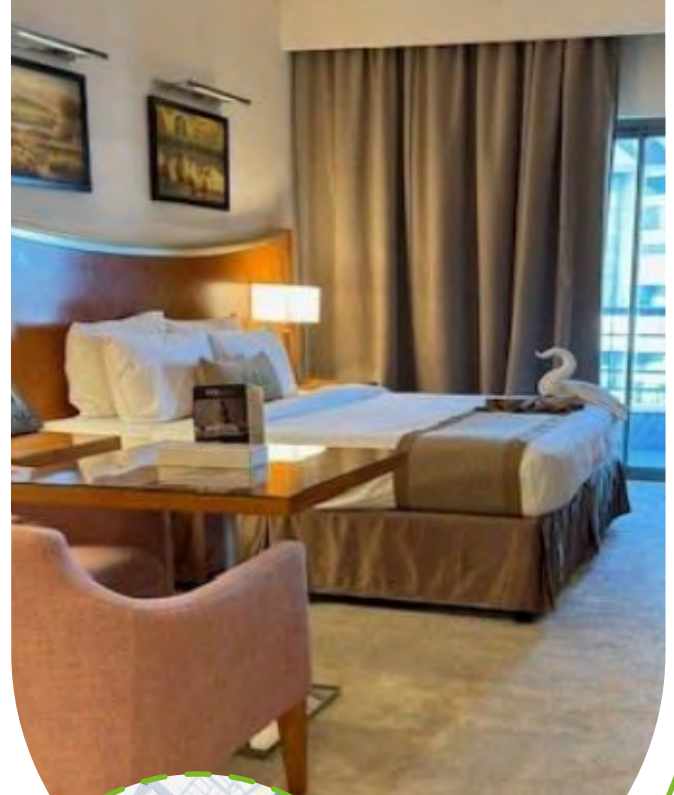


# Grand Bellevue Hotel

**Grand Belle Vue is in a district that combines media, internet, technology, knowledge, and entertainment. Guests can enjoy being in close proximity to all major airports, shopping malls, beaches, tourist attractions, and central business districts.**

- WiFi & satellite channels
- Concierge service
- 24-hour room service
- Express laundry / dry clean service
- Valet parking
- Overnight shoe-shine service
- Express check-in / check-out
- Housekeeping turndown service
- Pre-arranged babysitting service
- Automated wake-up call service
- 24-hour security personnel
- Secure and covered parking
- Full access to gym and entertainment facilities
- Complete health and entertainment facilities including two separate swimming pools, spas, hot tubs, saunas and fitness rooms

**Address:** Tecom, Al-Barsha P.O. Box 502424  
Dubai, United Arab Emirates



## About the Residence

### Accommodation types:

Single or twin studios.  
Single, double, or twin apartments.

**Bedrooms:** The studios or apartments contain the following: bed, 100% cotton oversized bath towels, air conditioning, in-room safe box, desk, hairdryer, refrigerator, washing machine, smart TV screen.

**Bathroom:** Own bathroom with separate bath.

**Kitchen:** The kitchen is fully equipped and includes cooking facilities and space to store food in the fridge/freezer and cupboards. Cutlery/crockery included.

**Additional costs:** Food and beverage-related orders. There may be additional charges for spa packages, such as massage sessions.

**Neighbourhood:** A 10-minute walk from a community centre, medical facilities, malls, supermarkets and a gym.

**Visitors/guests:** Overnight guests are not allowed.

**Noise:** Residents are required to respect all other residents and maintain a level of noise that does not disturb others. Quiet hours are 10pm-8am.

**Smoking:** All facilities and residents' rooms are non-smoking.

**Reception/security desk:** 24-hour reception including security personnel.

**Cleaning service:** Rooms are cleaned before check-in. Twice a week cleaning is provided for weekly and monthly stays.

**Beddings/towels:** Bedding and linen provided on check-in.

**Minimum stay:** 2 weeks minimum stay. Students can book weekly/daily stays with different rates; the minimum stay is 1 night.

**Check-in/check-out:** Check-in from from 9am/check-out by 2pm.

### Accommodation location:

- Dubai metro: 1 km away
- Burj Khalifa & Dubai mall: 10 km away
- Wild Wadi Water Park: 5 km away
- Jumeirah beach: 5 km away
- Dubai Marina: 8 km away
- World Trade Centre: 10 km away
- Dubai airport: 30 km away
- Mall of the Emirates: 2 km away
- Ibn Batuta mall: 7 km away
- Internet and Media city: 3 km away



## Take a look at Grand Bellevue Hotel rooms and studios



### Take a look at our studio

- Stylishly designed with contemporary furnishings
- Ideal for relaxation or work, with plenty of room to unwind.



### Bathrooms

- Both studios and apartments have their own bathroom.
- They come with a separate bath.



### Twin apartment

- Two cozy twin beds with premium bedding for a restful stay.
- A spacious lounge for relaxing, working, or entertaining guests.



### Living room

- Ample room to relax, entertain, or work in style.
- Equipped with a flat-screen TV and high-speed Wi-Fi for streaming and browsing.