



REVVIT STUCCO REPAIR GUIDE

*A Complete Guide to Identifying Problems, Planning, and Executing Repairs
with the Industry's Premier Stucco Repair Solutions*



ReVyvit[™]
by dryvit

 **Dryvit**[™]



THE INDUSTRY'S PREMIUM STUCCO REPAIR SOLUTION

In over 50 years as the market leader in EIFS, Dryvit is proud to have been chosen to supply the exterior cladding on more than 550,000 structures. This stucco repair guide is designed specifically to address common issues with your stucco building or home. Although stucco is considered a very robust material, it is still in need of maintenance and sometimes repair.

Stucco is the common name to describe Portland cement. It has been around for centuries and is a versatile, hard and durable material that can be textured and tinted to provide a colorful, attractive, and cost-effective exterior cladding. It's used in many commercial and residential buildings.

Hard coat stucco is a popular cladding choice, but it can crack easily, which leads to many problems. Fortunately, ReVyvit™ by Dryvit offers a range of solutions that can turn your under-performing stucco exterior into a superior cladding.



TABLE OF CONTENTS

- Identifying Problems with Stucco..... pg 3
- Fading and Efflorescence..... pg 4-5
- Cracking, Peeling and Blistering..... pg 6-7
- Planning and Executing the Repairs..... pg 8
- Dryvit Product Information..... pg 9
- Coatings and Finishes..... pg 10-11

IDENTIFYING THE PROBLEMS WITH STUCCO

Stucco can deteriorate if moisture gets into the structure. Penetrations through the wall contribute to moisture intrusion due to breaches in the sealant elements such as windows, doors, chimneys -- and generally any through-wall penetrations. Over time, the moisture can indicate its presence by telltale signs like the flaking of the stucco finish, spalling, cracks, efflorescence, or delamination of the stucco.

Once problems appear, they can be repaired through a ReVyvit solution to ensure the stucco system performs properly.

Continue reading to learn how Dryvit's ReVyvit solutions can remedy most common problems with stucco exteriors.



Cracked Stucco





FADING AND EFFLORESCENCE

THE PROBLEM

Stucco will often suffer from color fade and minor efflorescence — a whitish, powdery deposit on the surface of the stucco wall caused by mineral deposits left on the surface as the wall dries.

THE REVYVIT SOLUTION

The ReVyvit Solution 1 approach cleans the surface with a mildly pressurized rinse and, if necessary, an appropriate cleaning agent to help remove any tough stains.

Dryvit finishes are most effectively and safely cleaned with general cleaning products, followed by a mildly-pressurized water rinse. Acid cleaners are not recommended for routine cleaning, but may be necessary to remove efflorescence.

The following general purpose-cleaners are indicated by their manufacturers as suitable for cleaning Dryvit finishes:

<u>Company</u>	<u>Product</u>
Prosoco® Enviro Klean®	EIFS Clean 'N Prep
Shore Corporation	SB2600 EIFScrub
ABR® Products, Inc.	Building Wash 3

REMOVAL OF MILDEW AND ALGAE

Mildew and algae are commonly found on dirty exterior walls that receive no sunlight. Cleaning typically requires a more comprehensive cleaner.

NOTE: If recoating is planned, such cleaning MUST be performed.

Prosoco: Contact Prosoco for best choice. Several products available.

Shore Corporation: SB2600 EIFScrub

REMOVAL OF EFFLORESCENCE

Substrates that contain cement can produce the condition known as efflorescence. Efflorescence on the surface can be unsightly, but it is more of an aesthetic concern than a performance issue. However, the source of the moisture intrusion issue should be determined; it could indicate that a more serious condition exists elsewhere. For light efflorescence, it is preferable to use a general cleaner and light-pressure rinse afterwards. In rare instances, an extremely diluted (1 part in 20) acidic cleaning solution may be required to remove heavy efflorescence. Consult the cleaning product manufacturer for their recommendations under such circumstances. As with all cleaning solutions, pre-wet the surface with water prior to the application of the diluted acid cleaner. Light scrubbing with a soft bristle brush may also be necessary to remove stubborn staining.

Never apply acid solutions with a pressurized spray.

Immediately rinse the area as quickly as possible with pressurized clean water. All acid residue must be completely removed to avoid possible adhesion problems with primers, coatings/finishes, and sealants.

Once the surface has been cleaned and thoroughly inspected, it can be re-coated with one of several Dryvit high-performance coatings, including:

Demandit® Advantage™

Weatherlastic®
Smooth



mildew



mildew removal



efflorescence



efflorescence removal



CRACKING, BLISTERING AND PEELING

THE PROBLEM

Stucco, being rigid is susceptible to cracking. Once moisture enters at a crack, it is behind the lamina and contributes to blistering and peeling of the finish.

THE REVYVIT SOLUTION:

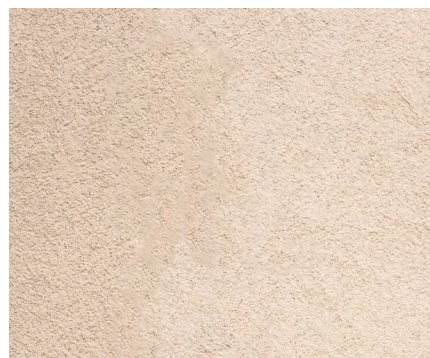
Use ReVyvit 2 solution when heavier repairs are needed. These can include clearing out cracks and delamination with a power washer and/or mechanical removal with a margin trowel/scrapper. In these instances, clean the surface as outlined above. Inspect areas of exposed base coat for breaches in the system like holes, cracks, etc. These may need to be filled and patched with an appropriate crack filler (Tremco® Dymonic® 100 or DAP ElastoPatch®) and/or Dryflex®, Genesis® base coat, and Dryvit reinforcing mesh. If repairs extend onto the surface of the existing finish, the whole wall may need to be skimmed with NCB™ or Freestyle® to a natural break.

One of Dryvit's high-performance coatings, textured finishes or specialty finishes can then be applied. Dryvit primer is recommended for better uniformity.

For best results, fully cover the surface with base coat and reinforcing mesh, and then use a high-performance elastomeric coating, elastomeric finish, or E™ Finish.



cracking



cracking repaired

PARAPETS AND OTHER NON-VERTICAL AREAS

Some of the more problematic areas can be horizontal or near-horizontal conditions, such as parapet caps and low-sloped decorative aesthetic bands projecting off the surface. These areas tend to allow water to accumulate and remain for extended periods, which can cause serious moisture intrusion over time. To address this condition, Dryvit recommends an application of Dryflex base coat with reinforcing mesh. This creates a waterproof membrane and a watertight seal that will be over-coated with Weatherlastic Smooth, E Finish, or one of our textured elastomeric finishes.

STEPS:

1. Prepping the parapet with necessary repairs such as Dryflex base coat and crack-filler to provide a watertight seal.
2. Embedding reinforcing mesh in the Dryflex basecoat to provide strength and durability for long-lasting performance.
3. Ensure reinforcing mesh is fully encapsulated.
4. Smooth out the surface prior to application of a Dryvit high-performance coating or finish.



parapet before



parapet repair



parapet after





PLANNING AND EXECUTING THE REPAIRS

Once the extent of the damage is determined and a solution is developed, a trained professional contractor should ensure the repairs are complete. It is this critical step that ensures proper execution and long-term performance of the ReVyvit Solution. Use a ReVyvit listed contractor to provide the confidence that the repairs are executed properly.

For larger, more pervasive problems, consider consulting with a design professional who is trained to identify and develop a more comprehensive scope of repairs. ReVyvit offers listed third-party building envelope consultants who can assess your restoration project.





DRYVIT PRODUCT INFORMATION

Most of the products recommended for stucco renovation are formulated with elastomeric polymers. Elastomeric products are designed to expand and contract, moving with the building to provide a watertight seal and excellent protection to the substrate. Dryvit products are made with the highest-quality ingredients; they protect your building from moisture intrusion, while offering excellent permeance that allows your building to breathe.

Dryvit products are offered in both smooth and textured finishes. Smooth coatings are high-performance paints that can be used when the existing texture is acceptable. Textured and specialty finishes include aggregates that offer varying aesthetics where a new texture or appearance is desired.

Consider the specialty Dryvit products listed on the following pages for the repair of stucco exteriors.





SUBSTRATE PREPARATION/REPAIR PRODUCTS (LEVELING COATS)

Because there is a wide variety of possible damage, there are many options available for repairing and preparing a substrate to receive one of Dryvit's coatings or finishes.

Crack Repair – Tremco Dymonic 100 and DAP ElastoPatch can both be used for crack repairs for a Dryvit stucco repair.

Genesis – An acrylic-modified, fiber-reinforced cementitious base coat for filling and skimming.

Dryflex – A flexible waterproofing base coat.

Dryvit Reinforcing Meshes – Specially-woven and treated glass fiber is used to provide impact resistance and strength.

ADDITIVES AND ENHANCEMENTS

StratoTone™ Pigments – Environmentally-friendly, high-performance colorants are available when deeper, bolder colors are chosen to provide deeper, richer, bolder colors, while also resisting fading compared to "traditional" colorants.





Demandit Advantage

Weatherlastic Smooth

Weatherlastic Textured Finish

E-Finish

COATINGS

Demandit Advantage – A high-performance acrylic coating. More robust than “traditional” acrylics, it offers a slight sheen to improve dirt resistance. Can be tinted to renew the look of the building.

Weatherlastic Smooth – A high-performance elastomeric coating for bridging hairline cracks. Two coats provide a waterproof coating that carries a 10-year warranty. Can be tinted to renew the look of the building.

FINISHES

Weatherlastic Textured Finishes – An acrylic-based elastomeric finish with DPR (Dirt Pick-up Resistant) chemistry that is weather-resistant, breathable, and protects your building. Offered in several textures and can be tinted to any color.

E-Finishes – A lightweight acrylic finish that demonstrates better performance characteristics than standard elastomerics. Offers superior flexibility for crack-bridging in stucco and other cement based substrates and excellent permeability to relieve moisture.

PRIMERS AND SURFACE CONDITIONERS

For best results, use of a tinted primer and/or surface conditioner is necessary to provide better color uniformity and long-term performance.

Color Prime™ – An acrylic prime coat that can be tinted in the same color as the coating or finish to provide color consistency.

Prymit™ – A specialty formulated acrylic primer which ensures excellent adhesion and alkali resistance.





Is Part of Tremco Construction Products Group

Dryvit Systems, Inc. | One Energy Way | West Warwick, RI, 02893 | 401.822.4100 | dryvit.com

Tremco Construction Products Group (CPG) brings together Tremco Incorporated's Commercial Sealants & Waterproofing and Roofing & Building Maintenance operating divisions; Dryvit Systems, Inc.; Nudura Inc.; Willseal; Weatherproofing Technologies, Inc. and Weatherproofing Technologies Canada, Inc.

Dryvit®, AquaFlash®, Backstop®, Outsulation®, Fedderlite®, Metalite®, NewBrick® and Outsulite® are registered trademarks of Dryvit Systems, Inc. Use of the ® symbol indicates registration with the US Patent & Trademark Office and the Canadian Intellectual Property Office.



Construction Products Group

tremcocpg.com