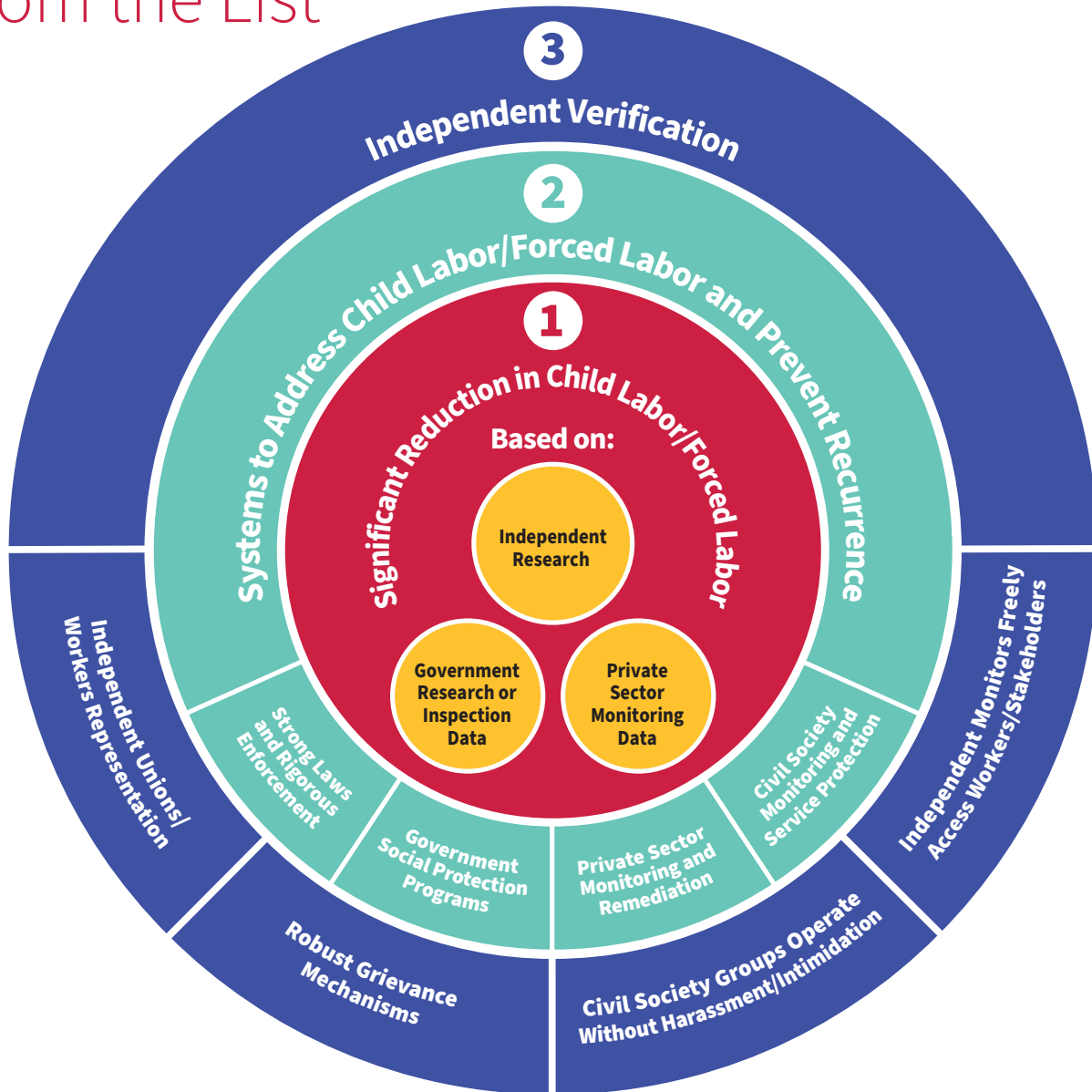


# Consideration of Goods for Removal from the List



- 1** ILAB examines all available data on the prevalence of child or forced labor in the production of the good. If such data are not publicly available, ILAB may request it from stakeholders or support new data collection efforts. In examining these data, ILAB seeks to confirm whether child or forced labor is occurring in “more than an isolated incident.”
- 2** If available data indicates that the prevalence of child or forced labor falls below this threshold, ILAB then examines the governmental, private sector, and civil society systems in place to assist victims and prevent recurrence of the problem. ILAB seeks to confirm that any isolated cases of child or forced labor found in the sector are addressed timely, through appropriate protections and services.
- 3** In examining all evidence related to a removal, ILAB seeks corroboration from multiple sources. ILAB confirms that its sources are not tainted by bias, pressure, or coercion, and that independent parties confirm its findings.