

## 1 Recommended system requirements:

- Windows XP / Vista / 7 / 8 / 8.1 / 10 (32, 64-bit); Linux(Wine); Mac OS X ([XQuartz X11](#) required).
- 1 GHz Pentium III processor or equivalent;
- 1 Gb RAM
- 1,5 Gb hard disk space;
- 1024x768 minimal screen resolution;
- OpenGL / DirectX 9.0 or higher.

## 2 Downloads

### Windows (and Linux)

1) DipTrace **Freeware** (32 and 64-bit) – does not allow to make projects with more than 2 signal layers and 300 pins, legal for **non-profit users only**. If you're going to use DipTrace for commercial purposes, you need to [purchase](#) it.

2) DipTrace **Trial** – no limitations on signal layers and number of pins (full-featured 30-day trial). Program will no longer work after the trial period expired.

*If you already have the license key, you can download either Freeware or Trial, it does not matter, because DipTrace will automatically convert into the corresponding paid version when you enter the license key.*

### MacOS

DipTrace 3.0 Mac – freeware MacOS version (for **non-profit users only**). If you're going to use DipTrace for commercial purposes, you need to [purchase](#) it.

*Notice that all standard component libraries are already included in all installation packages.*

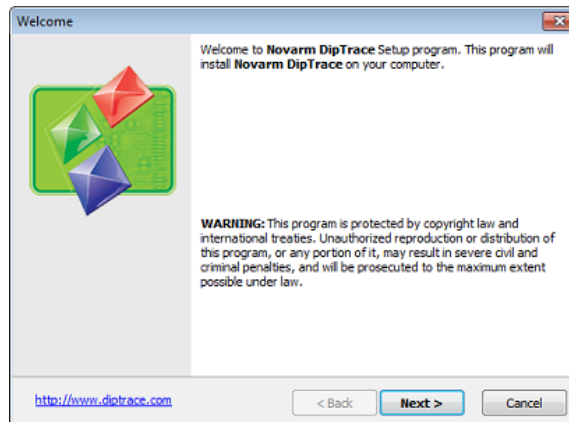
**3D models are not included.** Download the [standard set of 3D models](#) from the DipTrace website.

## 3 Installation guide (Windows)

DipTrace is easy-to-use and easy-to-install. Procedures doesn't differ a lot from those for other applications.

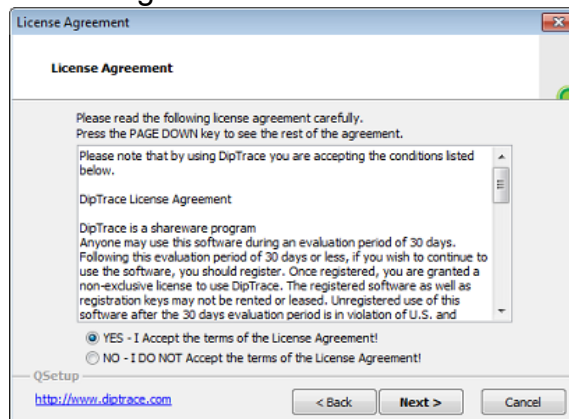
### Step 1:

Launch downloaded \*.exe file (diptrace\_en.exe, diptrace\_en64.exe, dipfree\_en.exe, dipfree\_en64.exe). Once file extraction completed, the welcome dialog box pops up. Click **Next>** button.



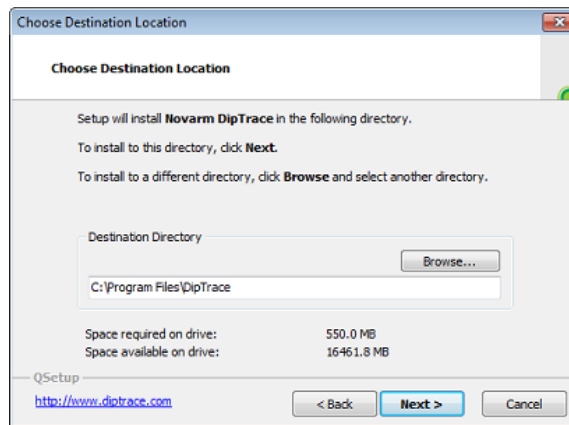
## Step 2:

The License Agreement will appear. You must read and accept the following in order to proceed. Select **Yes - I accept the terms of the License Agreement!**, and press **Next>** button. License Agreements are different for freeware and trial versions.



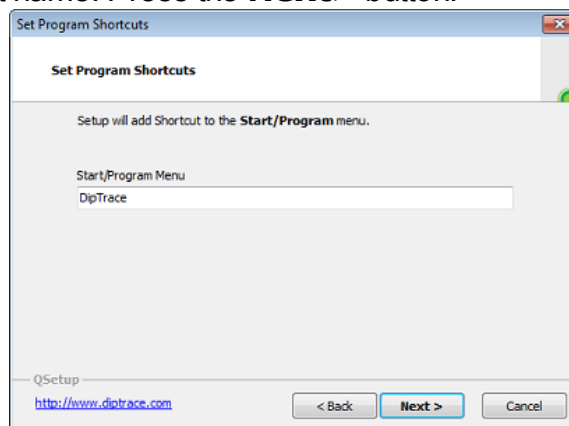
## Step 3:

Select the destination folder. DipTrace is installed into "C:\Program files\DipTrace" folder by default. ("C:\Program files (x86)\DipTrace" for 32-bit applications on 64-bit operating systems). You can set any other folder by pressing the **Browse...** button. The installer shows available and required disk space. Press **Next>** to continue.



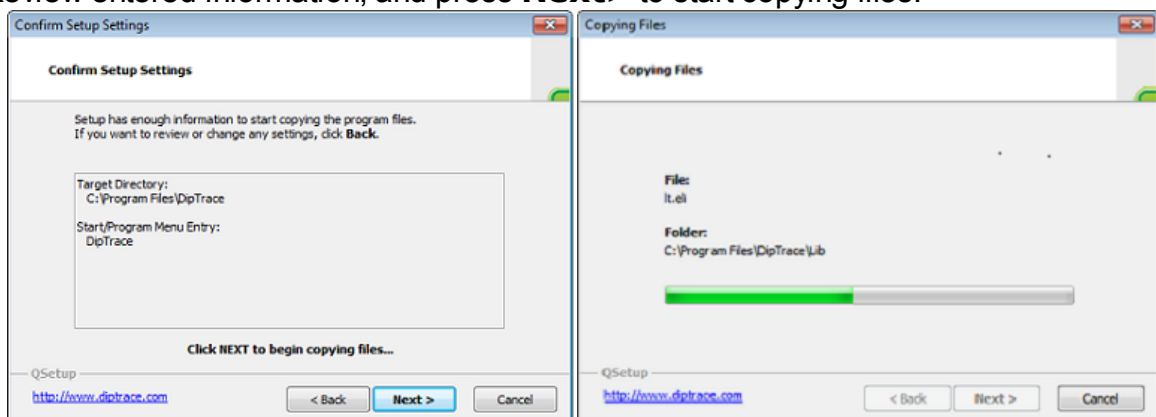
#### Step 4:

Set the program's shortcuts. Type in the name of the folder in the Start Windows menu. "DipTrace" is a default name. Press the **Next>** button.



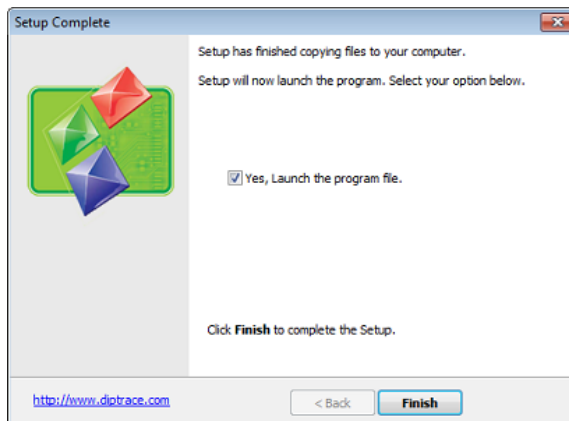
#### Step 5:

Confirm Setup Settings.  
Review entered information, and press **Next>** to start copying files.



**Step 6:**

Setup complete. Press **Finish**. You can place a check mark to launch DipTrace automatically right after installation.



## 4 Installation guide (MacOS)

**Step 1:**

Download and install XQuartz from [xquartz.macosforge.org](http://xquartz.macosforge.org). Find specific instructions on installing XQuartz at their website.

**Step 2:**

Restart the computer or log out and back in to complete the XQuartz installation.

**Step 3:**

Download and open [DipTrace DMG](#) file.

**Step 4:**

Move DipTrace to your Applications.

**Step 5:**

Launch and enjoy DipTrace!











## 5 Launch DipTrace



DipTrace consists of four software modules **Schematic**, **PCB Layout**, **Pattern Editor**, and **Component Editor**. Each module can be launched separately in the **Start** menu in Windows or with DipTrace Launcher on MacOS. DipTrace Launcher is a convenient tool to launch DipTrace modules.

## 6 Order DipTrace

To purchase DipTrace, visit [DipTrace Online Store](#), where you can select the DipTrace edition that will be perfect for your requirements.

EDITION	MAXIMUM PINS AND SIGNAL LAYERS	PRICE	ORDER OPTIONS
DipTrace Full	Unlimited pins, Unlimited signal layers	\$ 1,195	 ORDER VIA FASTSPRING  ORDER VIA SHARE-IT
DipTrace Extended	2000 pins, 6 signal layers	\$ 695	 ORDER VIA FASTSPRING  ORDER VIA SHARE-IT
DipTrace Standard	1000 pins, 4 signal layers	\$ 395	 ORDER VIA FASTSPRING  ORDER VIA SHARE-IT
DipTrace Lite	500 pins, 2 signal layers	\$ 145	 ORDER VIA FASTSPRING  ORDER VIA SHARE-IT
DipTrace Starter	300 pins, 2 signal layers	\$ 75	 ORDER VIA FASTSPRING  ORDER VIA SHARE-IT

\*The currency depends on your country

*Unlimited number of plain layers and no restrictions on the board size in all DipTrace editions.*

*Notice that all DipTrace editions has the same capabilities: autorouter, features and tools.*

Select **Order via FastSpring** (US&International) or **Order via ShareIt** (Europe). Enter payment and delivery information.

**The Registration data (User Name and License Key) will be sent by email within 24 hours.**

Please, make sure that you've entered a valid email address and **check your spam filter**.

### Volume Discount

Volume pricing is **automatically applied**, depending on the quantity of copies. You

must order several copies at a time, if you want to get a volume discount.

As an option you can order **DipTrace on CD** for additional charge. You can use it as a backup installation source. Compact disk in a slim DVD-box features Win32, Win64, Mac OS X installers with all libraries and 3D models. Shipping cost is included. Usually the delivery takes 7-14 days (up to 3 weeks) depending on your location. If you didn't receive it in time, [fill out a support ticket](#).

## 7 Activation

### Activating the DipTrace Trial

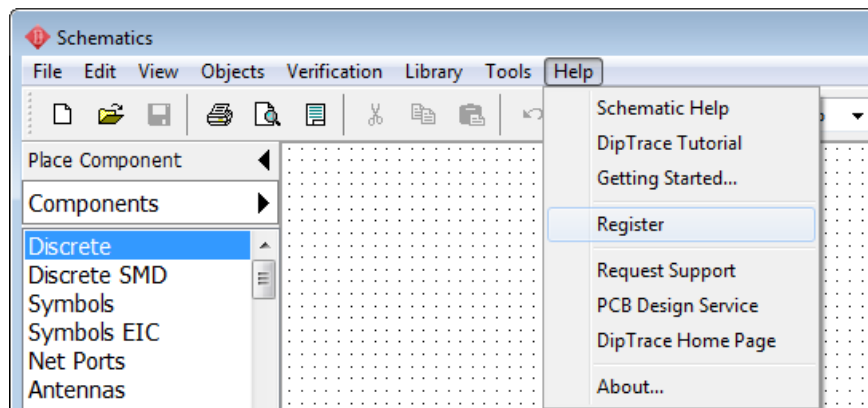
If you have full-featured 30-day trial version, then the Evaluation dialog box will pop up every time you launch the DipTrace software. It has the countdown.



Press **Evaluate** button if you want to continue using the trial version or press **Purchase** and you will be automatically redirected to [DipTrace Online Store](#). If you already have the User Name and Registration Key, **copy/paste** them from the email into the corresponding fields, then press **Apply** button, which will appear instead of the **Evaluate** once correct registration data entered. You can register the software in either Schematic or PCB Layout,

but make sure that only one module is working at a time.

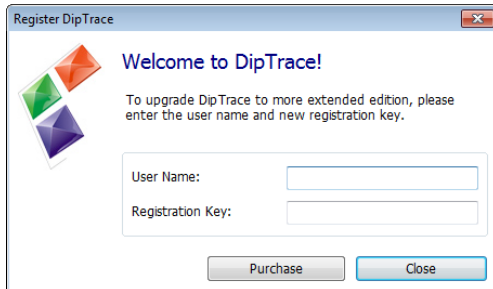
If you've entered correct data in the corresponding fields, but the registration can't complete, please, [fill out a support ticket](#) and attach the screenshot.



### Activating the DipTrace Freeware

If you have DipTrace freeware non-profit version installed, the program typically

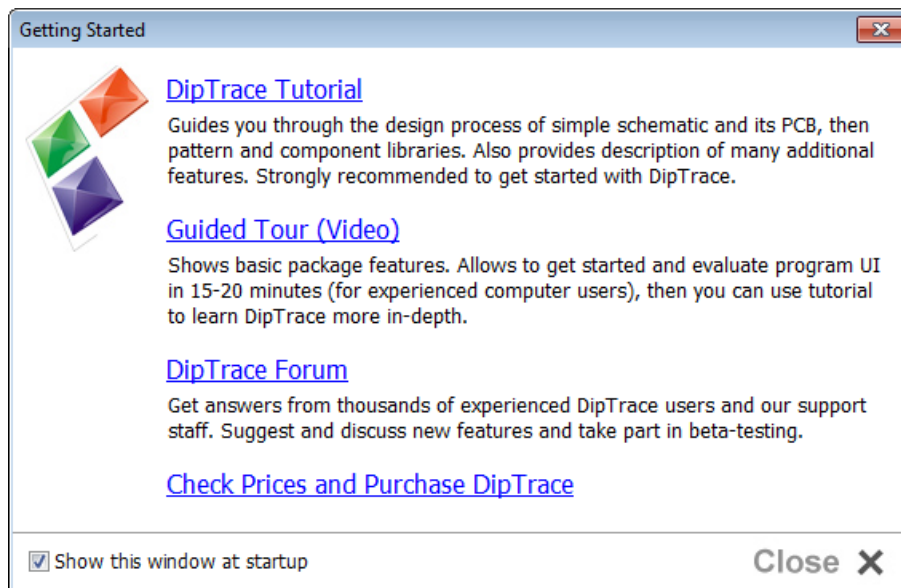
launches without any pop-up dialogs, but the maximum number of pins and signal layers will be restricted.



To purchase DipTrace, select "Help \ Register" from main menu in PCB Layout or Schematic, then press the **Purchase** button in the pop-up dialog box to purchase DipTrace at our website or enter the User Name and Registration Key, and press **Apply**.

## 8 Getting Started

DipTrace **Getting Started** dialog box helps to find step-by-step tutorial (included in all downloads), watch online our guided video tour, get access to DipTrace forum etc., just go to "Help \ Getting Started" from the main menu. You can easily turn this dialog OFF anytime.



## 9 DipTrace files and location

DipTrace software has **four** specific file formats (file extensions):

- \*.dip – the printed circuit board file saved in the PCB Layout.
- \*.dch – schematic file saved in the Schematic module.
- \*.lib – pattern library file.
- \*.eli – component library file.

DipTrace system files, together with standard libraries and examples, are installed to "C:\Program files\DipTrace" folder. Another DipTrace folder is "C:

\Users\<>User>\Documents\DipTrace". This folder has three folders inside: **Examples** (copy of the same folder from the **Program files**), **My Libraries** (default location for all user libraries), and **Projects** (default location for all user projects).

DipTrace does not allow the user to save custom libraries together with standard libraries in the same folder. When you upgrade DipTrace to a newer version, all library files in "C:\Program files\DipTrace\Lib" will be rewritten with new files.

The last place where you can find the DipTrace files is "C:\ProgramData\DipTrace\" ("C:\Documents and Settings\All Users\Application Data\DipTrace\" for Win XP users). This folder contains the settings (files with \*.dat extension) and interface language files (\*.lng extension) in **Data** and **Data-Unicode** sub folders.

## 10 Restore default settings

Sometimes users can change the settings, so DipTrace doesn't launch at all. Usually it happens when graphic mode is incompatible with video adapter.

In order to restore default settings, you need to launch "**Default.reg**" file and allow it to make necessary changes in the Windows registry. You can find this file in the DipTrace folder.

## 11 Upgrade DipTrace edition

If you already have registered copy of DipTrace or a freeware version, but you need to upgrade it to edition with more layers and pins. **Upgrade costs only the price difference.**

### Step 1:

Visit DipTrace [DipTrace Online Store](#) on the web.

### Step 2:

Press **Upgrade Edition** or **Upgrade via FastSpring** button.

### Step 3:

Select the edition you want to purchase with the corresponding check boxes. For example, if you need to upgrade from DipTrace Lite to DipTrace Full, select all three upgrade steps (like on the picture).



**DipTrace - Upgrade Starter to Lite - USD 70.00**

Upgrade to 500 pins, 2 signal layers. For registered customers of Starter Edition only.

 **DipTrace - Upgrade Lite to Standard - USD 250.00**

Upgrade to 1000 pins, 4 signal layers. For registered customers of Lite Edition only.

 **DipTrace - Upgrade Standard to Extended - USD 300.00**

Upgrade to 2000 pins, 6 signal layers. For registered customers of Standard Edition only.

 **DipTrace - Upgrade Extended to Full - USD 500.00**

Upgrade to unlimited version. For registered customers of Extended Edition only.

 **CD-ROM via Mail - USD 11.95**

DipTrace CD in slim DVD-box. Includes Win32, Win64, Mac OS X installers with all libraries and 3D models.  
Shipping included.



It's possible to make several-step upgrade. Please [fill out a support ticket](#) if you want to upgrade from a non-profit license. Visit our [website](#) for additional information. Select "Help \ About" from the main menu in Schematics or PCB Layout to find out what edition and version you have.

#### Step 4:

Press **Add to Order** or **Order Now** button.

#### Step 5:

Fill out the payment details. We will send the User Name and the License Key to your email address.

#### Step 6:

Launch DipTrace, select "Help \ Register" from the main menu and enter new registration data to upgrade.

## 12 Update to the next version (for DipTrace 1.X users)

All minor upgrades (3.X versions) are free. Update to the next basic version is 25% of the full price. DipTrace 1.X and 2.X users can update to DipTrace 3.0 online.

## Upgrade DipTrace to 3.x

Please check "Help / About" in Schematic or PCB Layout module, or [contact us](#) to find out what version and edition you have. To upgrade Non-Profit Edition please [contact us](#) and get order link.

### ● DipTrace - Upgrade Starter Edition to 3.x - USD 19.00

300 pins, 2 signal layers. For registered customer of DipTrace 2.x (1.x) Starter Edition only.

### ● DipTrace - Upgrade Lite to 3.x - USD 44.00

500 pins, 2 signal layers. For registered customer of DipTrace 2.x(1.x) Lite Edition only.

### ● DipTrace - Upgrade Standard Edition to 3.x - USD 99.00

1000 pins, 4 signal layers. For registered customer of DipTrace 2.x (1.x) Standard Edition only.

### ● DipTrace - Upgrade Extended Edition to 3.x - USD 175.00

2000 pins, 6 signal layers. For registered customer of DipTrace 2.x(1.x) Extended Edition only.

### ● DipTrace - Upgrade Full Edition to 3.x - USD 295.00

Unlimited version. For registered customer of DipTrace 2.x(1.x) Full Edition only.

## Step 1:

Once you have downloaded a new version of DipTrace, you need to delete the old version. Please make sure that **user-modified libraries and standard libraries are saved in different folders**, so you won't lose them.

In Windows OS press **Start** button, then select **All Programs**, find the **DipTrace** folder in the list, and select **Uninstall Novarm DipTrace**. You can also use the **Windows Control Panel**.

## Step 2:

Press **Yes** to confirm and follow the instructions of the guide. DipTrace folder in the **Documents** folder, which is the default location for user libraries and projects isn't deleted. You will get an error report about that, just press **OK**, and close the dialog box once the process is completed.

## Step 3:

Install a new version of DipTrace and enter **new** registration data. **All projects and libraries will work in the new version.**

*Please, don't modify standard libraries or save user libraries in a single folder with standard ones (for versions up to 2.3). When you update DipTrace version (reinstall*

*the software), the libraries folder will be completely rewritten with the newfiles.*

## 13 Different languages

DipTrace is delivered in English only. In order to localize the software, you need to download and install the language pack.

- Go to the [Regional versions](#) page.
- Download the language pack you need (save "lang\_\*\*.exe" file on your computer).
- Launch "lang\_<language\_code> \*.exe" file, and follow the standard installation instructions.

*Notice that you need to install the language files in the folder with DipTrace. If language pack is available only for the older DipTrace version, some of the new features will be in English.*

If you have any questions, please, don't hesitate to [contact us](#).