

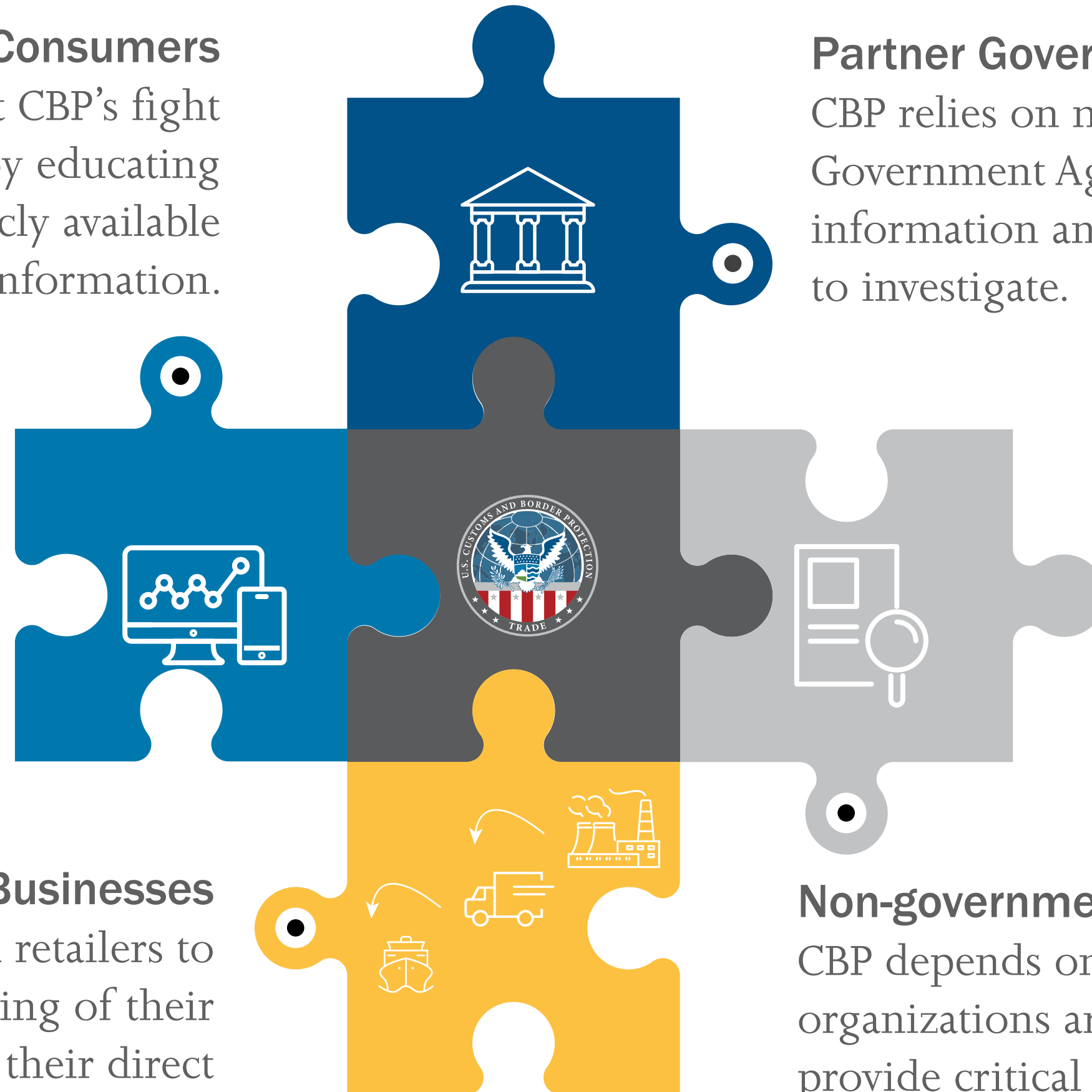
# FORCED LABOR AND OUR PARTNERS

## Consumers

Consumers can support CBP's fight against forced labor by educating themselves through publicly available reports and information.

## Partner Government Agencies

CBP relies on multiple Partner Government Agencies for the information and resources required to investigate.



## Domestic Importers and Businesses

CBP encourages American retailers to have a thorough understanding of their supply chains, beyond their direct suppliers.

## Non-governmental Organizations

CBP depends on non-governmental organizations around the world to provide critical information and details for forced labor allegations.

Office of Trade

Follow us on Twitter  @CBPTradeGov