



**ASHA**  
Speech-Language Pathology  
The Largest Association of  
Speech-Language Pathology  
Professionals

# SLP HEALTH CARE 2019 SURVEY

## Survey Summary Report: Number and Type of Responses

For additional information, please contact:

Jeanette Janota, Surveys & Analysis  
American Speech-Language-Hearing Association  
2200 Research Boulevard  
Rockville, MD 20850-3289  
800-498-2071, ext. 8738  
[jjanota@asha.org](mailto:jjanota@asha.org)

**Suggested Citation:**

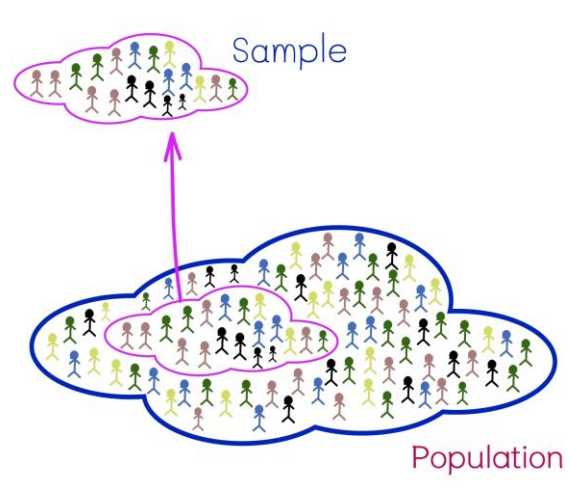
American Speech-Language-Hearing Association. (2019). *2019 SLP health care survey: Survey summary report: Number and type of responses*. Available from [www.asha.org](http://www.asha.org).

## Contents

Sampling and Response Rates .....	1
ASHA Services and Programs: Q. 1.....	2
Workplace: Qs. 2–5.....	3
Employment: Qs. 6–7.....	8
Employment and Earnings: Qs. 8–17.....	9
Professional Services: Qs. 18–20 .....	20
Productivity: Qs. 21–23.....	32
Career Transitions: Qs. 24–25 .....	36
Alternative Payment Models: Q. 26.....	41
Multiskilling: Qs. 27–28 .....	42
Demographics: Qs. 29–35.....	50
Appendix .....	57

## Sampling and Response Rates

ASHA used probability (nonreplacement) sampling via a stratified systematic technique to select a sample of 4,500 ASHA-certified speech-language pathologists (SLPs) for the 2019 SLP Health Care Survey. We stratified the sample by facility type and private practice, and we weighted the data to reflect their proportion by facility and private practice in the Association. Small groups, such as SLPs who work in pediatric hospitals, were oversampled in order to include sufficient numbers from these groups in the sample.



We obtained a response rate of 50.3% (2,232 completed surveys from a net sample of 4,433 eligible SLPs). This percentage is unweighted.

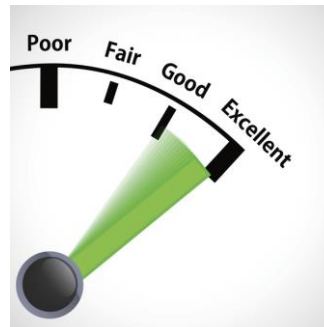
We weighted data for all tables in the report. The “All Facility Types” column throughout the report reflects results for respondents from the six facility types as well as for the nine respondents who were employed in “other” types of facilities and respondents who did not answer the question about facility type. Therefore, the “All Facility Types” column may not be the sum of the *ns* in the other six columns. We did not present data for table cells with fewer than 25 respondents, and we excluded administrative offices for questions where we limited responses to clinical service providers.

The end of this report contains a description of statistical terms used.

## ASHA Services and Programs

1. In your opinion, what kind of job is the Association doing in serving its speech-language pathology members who work in health care? (Percentages)  
 Analyses limited to respondents who met the following criterion:  
 ❖ CCC-SLP

Response	Facility Type						
	All Facility Types (n = 2,140)	General Medical/VA/ LTAC Hospital (n = 318)	Home Health/ Client's Home (n = 343)	Outpatient Clinic/Office (n = 678)	Pediatric Hospital (n = 72)	Rehab Hospital (n = 173)	Skilled Nursing Facility (n = 475)
Poor	4.4	6.6	4.4	2.4	1.4	4.0	6.3
Fair	28.5	38.7	23.0	21.7	27.8	35.8	33.1
Good	54.8	45.9	56.0	62.2	59.7	50.3	49.9
Excellent	12.3	8.8	16.6	13.7	11.1	9.8	10.7
		Statistical significance: $\chi^2(15) = 74.3, p = .000$ , Cramer's $V = .110$ <u>Conclusion</u> : There is adequate evidence from the data to say that the responses vary by facility type.					



## Workplace

2. Would you be supportive of allowing SLPs to use an interstate licensing compact to enhance interstate practice and licensure portability? (Percentages)

Analyses limited to respondents who met the following criterion:

❖ CCC-SLP

Response	Facility Type						
	All Facility Types (n = 2,171)	General Medical/VA/ LTAC Hospital (n = 323)	Home Health/ Client's Home (n = 355)	Outpatient Clinic/Office (n = 691)	Pediatric Hospital (n = 72)	Rehab Hospital (n = 176)	Skilled Nursing Facility (n = 471)
Yes	96.0	97.8	97.7	95.2	95.8	95.5	95.5
No	4.0	2.2	2.3	4.8	4.2	4.5	4.5
		Statistical significance: $\chi^2(5) = 7.3, p = .202$ <u>Conclusion:</u> There is not enough evidence from the data to say that the responses vary by facility type.					



3. Do you currently have funded, unfilled positions for SLPs at your facility? (Percentages) Analyses limited to respondents who met the following criterion: ❖ CCC-SLP							
Positions	Facility Type						
	All Facility Types	General Medical/VA/LTAC Hospital	Home Health/Client's Home	Outpatient Clinic/Office	Pediatric Hospital	Rehab Hospital	Skilled Nursing Facility
	<i>n</i> = 2,209	<i>n</i> = 330	<i>n</i> = 356	<i>n</i> = 707	<i>n</i> = 73	<i>n</i> = 180	<i>n</i> = 482
Yes	26.8	29.4	31.5	29.1	30.1	26.1	19.9
No	71.0	70.3	68.0	70.7	69.9	73.3	80.1
Not currently employed (SKIP to Q. 31.)	2.1	0.3	0.6	0.1	0.0	0.6	0.0
	Too many cells (33%) have an expected count of fewer than 5. <u>Conclusion</u> : Too little data are available in some facility categories to test whether responses vary by facility type.						
Recoded, deleting "Not currently employed" response							
	<i>n</i> = 2,162	<i>n</i> = 329	<i>n</i> = 354	<i>n</i> = 706	<i>n</i> = 73	<i>n</i> = 179	<i>n</i> = 482
Yes	27.4	29.5	31.6	29.2	30.1	26.3	19.9
No	72.6	70.5	68.4	70.8	69.9	73.7	80.1
	Statistical significance: $\chi^2(5) = 19.0$ , <b><i>p</i> = .002</b> , Cramer's <i>V</i> = .095 <u>Conclusion</u> : There is adequate evidence from the data to say that the responses vary by facility type.						

4. Based on your own observations and experiences, rate the current job market for SLPs in your type of employment facility and in your geographic area. (Percentages)

Analyses limited to respondents who met the following criteria:

- ❖ CCC-SLP
- ❖ Employed full time or part time

Observations	Facility Type						
	All Facility Types (n = 2,134)	General Medical/VA/ LTAC Hospital (n = 327)	Home Health/ Client's Home (n = 358)	Outpatient Clinic/Office (n = 693)	Pediatric Hospital (n = 72)	Rehab Hospital (n = 178)	Skilled Nursing Facility (n = 472)
More job openings than job seekers	32.8	18.3	49.2	37.5	16.7	17.4	31.4
Job openings and job seekers in balance	35.6	27.8	39.1	36.9	36.1	33.7	37.5
Fewer job openings than job seekers	31.6	53.8	11.7	25.5	47.2	48.9	31.1
		Statistical significance: $\chi^2(10) = 208.0$ , $p = .000$ , Cramer's $V = .223$ <u>Conclusion:</u> There is adequate evidence from the data to say that the responses vary by facility type.					



5. In the past 12 months, have you felt pressured by an employer or supervisor to engage in any of the following activities? *Select all that apply.* (Percentages; we changed the order of responses from alphabetic to descending order of frequencies.)

Analyses limited to respondents who met the following criteria:

- ❖ CCC-SLP
- ❖ Employed full time or part time

Pressure	Facility Type						
	All Facility Types (n = 2,174)	General Medical/VA/ LTAC Hospital (n = 330)	Home Health/ Client's Home (n ≥ 363)	Outpatient Clinic/Office (n = 711)	Pediatric Hospital (n = 73)	Rehab Hospital (n ≥ 179)	Skilled Nursing Facility (n = 482)
Discharge inappropriately (e.g., early or delayed)	14.4	7.3	11.5	5.5	8.2	14.5	35.1
	Statistical significance: $\chi^2(5) = 232.3$ , $p = .000$ , Cramer's $V = .330$ <u>Conclusion:</u> There is adequate evidence from the data to say that the responses vary by facility type.						
Provide inappropriate frequency or intensity of services	13.9	16.7	10.7	8.2	13.7	12.3	23.2
	Statistical significance: $\chi^2(5) = 60.5$ , $p = .000$ , Cramer's $V = .168$ <u>Conclusion:</u> There is adequate evidence from the data to say that the responses vary by facility type.						
Provide evaluation and treatment that are not clinically appropriate	12.2	12.1	6.3	5.6	8.2	16.2	25.1
	Statistical significance: $\chi^2(5) = 119.9$ , $p = .000$ , Cramer's $V = .237$ <u>Conclusion:</u> There is adequate evidence from the data to say that the responses vary by facility type.						
	(Question 5 continues on next page.)						



5. (cont'd) In the past 12 months, have you felt pressured by an employer or supervisor to engage in any of the following activities? *Select all that apply.* (Percentages; we changed the order of responses from alphabetic to descending order of frequencies.)

Analyses limited to respondents who met the following criteria:

- ❖ CCC-SLP
- ❖ Employed full time or part time

Pressure	Facility Type						
	All Facility Types (n = 2,174)	General Medical/VA/ LTAC Hospital (n = 330)	Home Health/ Client's Home (n ≥ 363)	Outpatient Clinic/Office (n = 711)	Pediatric Hospital (n = 73)	Rehab Hospital (n ≥ 179)	Skilled Nursing Facility (n = 482)
Provide services for which you had inadequate training and/or experience	8.2	7.6	7.1	11.0	8.2	6.1	5.6
	Statistical significance: $\chi^2(5) = 13.4$ , $p = .020$ , Cramer's $V = .079$ <u>Conclusion:</u> There is adequate evidence from the data to say that the responses vary by facility type.						
Alter documentation for reimbursement	4.3	2.1	3.9	4.9	1.4	2.2	6.2
	Statistical significance: $\chi^2(5) = 12.5$ , $p = .028$ , Cramer's $V = .076$ <u>Conclusion:</u> There is adequate evidence from the data to say that the responses vary by facility type.						
Did not feel pressured	68.4	71.5	74.7	76.1	79.5	68.2	49.4
	Statistical significance: $\chi^2(5) = 112.6$ , $p = .000$ , Cramer's $V = .230$ <u>Conclusion:</u> There is adequate evidence from the data to say that the responses vary by facility type.						

## Employment

6. Which one of the following categories best describes your employment status? (Percentages)  
 Analyses limited to respondents who met the following criterion:  
 ❖ CCC-SLP

Status	Facility Type						
	All Facility Types (n = 2,174)	General Medical/VA/ LTAC Hospital (n = 331)	Home Health/ Client's Home (n = 364)	Outpatient Clinic/Office (n = 711)	Pediatric Hospital (n = 73)	Rehab Hospital (n = 179)	Skilled Nursing Facility (n = 482)
Employed full time	70.0	68.6	58.5	69.5	76.7	69.8	79.7
Employed part time	30.0	31.4	41.5	30.5	23.3	30.2	20.3
		Statistical significance: $\chi^2(5) = 46.3$ , $p = .000$ , Cramer's $V = .147$ <u>Conclusion:</u> There is adequate evidence from the data to say that the responses vary by facility type.					

7. Do you currently work in, own, or co-own a private practice? (Percentages)  
 Analyses limited to respondents who met the following criterion:  
 ❖ CCC-SLP

Private Practice	Facility Type						
	All Facility Types (n = 2,174)	General Medical/VA/ LTAC Hospital (n = 331)	Home Health/ Client's Home (n = 363)	Outpatient Clinic/Office (n = 708)	Pediatric Hospital (n = 73)	Rehab Hospital (n = 181)	Skilled Nursing Facility (n = 484)
Yes, full time	15.5	0.9	18.7	35.9	0.0	0.6	1.9
Yes, part time	12.8	2.7	20.7	22.6	9.6	2.8	3.3
No	71.7	96.4	60.6	41.5	90.4	96.7	94.8
		Statistical significance: $\chi^2(10) = 656.5$ , $p = .000$ , Cramer's $V = .392$ <u>Conclusion:</u> There is adequate evidence from the data to say that the responses vary by facility type.					

## Employment and Earnings

8. Select the one type of facility that best describes where you work most of the time. For individuals who work in El or private practice, select the type of building in which you deliver most of your services. Multiple responses will be excluded from analyses. (Percentages)

Analyses limited to respondents who met the following criteria:

- ❖ CCC-SLP
- ❖ Employed full time or part time

Facility Type	Unweighted (n = 2,136)	Weighted (n = 2,147)
General medical, Veterans Affairs (VA), or long-term acute care (LTAC) hospital	14.2	15.4
Home health agency or client's home	18.0	16.9
Outpatient clinic or office	31.2	33.1
Pediatric hospital	6.5	3.4
Rehabilitation hospital	10.8	8.3
Skilled nursing facility (SNF)	18.9	22.5
Other, specify:	0.4	0.4

9. How many locations do you work in during a typical week for your primary employer? *Do not include sites on the same campus or multiple employers. Select only one response. (Percentages)*

Analyses limited to respondents who met the following criteria:

- ❖ CCC-SLP
- ❖ Employed full time or part time

Locations	Facility Type						
	All Facility Types (n = 2,170)	General Medical/VA/ LTAC Hospital (n = 330)	Home Health/ Client's Home (n = 363)	Outpatient Clinic/Office (n = 708)	Pediatric Hospital (n = 74)	Rehab Hospital (n = 179)	Skilled Nursing Facility (n = 482)
I work in 1 location.	59.6	78.8	7.4	63.4	74.3	86.0	69.7
I work in 2 locations.	15.1	17.3	3.0	18.9	18.9	11.2	17.0
I work in 3 locations.	5.5	3.0	2.5	7.6	5.4	2.2	6.8
I work in 4 or more locations.	3.7	0.9	4.7	4.5	1.4	0.6	5.2
I work in multiple locations through home health or EI.	16.1	0.0	82.4	5.5	0.0	0.0	1.2
		Statistical significance: $\chi^2(20) = 1503.7$ , $p = .000$ , Cramer's $V = .420$ <u>Conclusion:</u> There is adequate evidence from the data to say that the responses vary by facility type.					

10. Select the one position that best describes how you spend most of your time. *Multiple responses will be excluded from analyses.* (Percentages)

Analyses limited to respondents who met the following criteria:

- ❖ CCC-SLP
- ❖ Employed full time or part time

Function	Facility Type						
	All Facility Types	General Medical/VA/LTAC Hospital	Home Health/Client's Home	Outpatient Clinic/Office	Pediatric Hospital	Rehab Hospital	Skilled Nursing Facility
	<i>n</i> = 2,160	<i>n</i> = 327	<i>n</i> = 363	<i>n</i> = 702	<i>n</i> = 73	<i>n</i> = 178	<i>n</i> = 482
Primarily clinical service provider (e.g., SLP)	89.9	92.7	93.7	88.0	91.8	92.1	86.9
Primarily administrative or supervisory position (SKIP to Q. 12.)	8.2	6.7	5.5	9.3	6.8	7.3	10.0
Other, specify:	1.9	0.6	0.8	2.7	1.4	0.6	3.1
	Statistical significance: $\chi^2(10) = 21.7, p = .017$ , Cramer's <i>V</i> = .071 <u>Conclusion</u> : There is adequate evidence from the data to say that the responses vary by facility type.						
<b>Recoded, deleting "Other, specify" response</b>							
	<i>n</i> = 2,119	<i>n</i> = 325	<i>n</i> = 360	<i>n</i> = 683	<i>n</i> = 72	<i>n</i> = 177	<i>n</i> = 467
Primarily clinical service provider (e.g., SLP)	91.6	93.2	94.4	90.5	93.1	92.7	89.7
Primarily administrative or supervisory position (SKIP to Q. 12.)	8.4	6.8	5.6	9.5	6.9	7.3	10.3
	Statistical significance: $\chi^2(5) = 8.7, p = .123$ <u>Conclusion</u> : There is not enough evidence from the data to say that the responses vary by facility type.						

11. In a typical month, for how many employers do you work as a clinical service provider?

Analyses limited to respondents who met the following criteria:

- ❖ CCC-SLP
- ❖ Employed full time or part time
- ❖ Clinical service provider

Employers	Facility Type						
	All Facility Types (n = 1,758)	General Medical/VA/ LTAC Hospital (n = 303)	Home Health/ Client's Home (n = 340)	Outpatient Clinic/Office (n = 618)	Pediatric Hospital (n = 67)	Rehab Hospital (n = 164)	Skilled Nursing Facility (n = 419)
25th percentile	1.0	1.0	1.0	1.0	1.0	1.0	1.0
50th percentile <b>(Median)</b>	1.0	1.0	1.0	1.0	1.0	1.0	1.0
75th percentile	1.5	1.0	2.0	1.0	1.0	1.0	2.0
Mean	1.4	1.3	1.6	1.2	1.2	1.2	1.6
Standard deviation	0.8	0.6	1.0	0.6	0.4	0.6	1.0
Mode	1.0	1.0	1.0	1.0	1.0	1.0	1.0
		Statistical significance: $F(5, 1726) = 17.4, p = .000$ <u>Conclusion:</u> There is adequate evidence from the data to say that the responses vary by facility type.					

12. How are you paid in your main job? (Percentages)  
 Analyses limited to respondents who met the following criteria:  
 ❖ CCC-SLP  
 ❖ Employed full time or part time

Basis	Facility Type						
	All Facility Types (n = 2,150)	General Medical/VA/LTAC Hospital (n = 329)	Home Health/Client's Home (n = 361)	Outpatient Clinic/Office (n = 697)	Pediatric Hospital (n = 72)	Rehab Hospital (n = 180)	Skilled Nursing Facility (n = 479)
Primarily annual salary	34.3	38.9	24.7	44.6	51.4	49.4	15.0
Primarily per hour (SKIP to Q. 14.)	54.2	60.8	23.0	47.5	48.6	50.6	84.8
Primarily per home visit (SKIP to Q. 16.)	11.5	0.3	52.4	7.9	0.0	0.0	0.2
		Statistical significance: $\chi^2(10) = 903.9$ , $p = .000$ , Cramer's $V = .462$ <u>Conclusion:</u> There is adequate evidence from the data to say that the responses vary by facility type.					



13. Including bonuses, what is your gross annual income before deductions for your main job?

Analyses limited to respondents who met the following criteria:

- ❖ CCC-SLP
- ❖ Employed full time
- ❖ Paid primarily an annual salary
- ❖ Annual salary of at least \$1

Annual Income	Facility Type						
	All Facility Types (n = 630)	General Medical/VA/ LTAC Hospital (n = 106)	Home Health/ Client's Home (n = 76)	Outpatient Clinic/Office (n = 262)	Pediatric Hospital (n = 31)	Rehab Hospital (n = 79)	Skilled Nursing Facility (n = 65)
25th percentile	\$67,000	\$71,000	\$62,500	\$62,000	\$68,493	\$70,000	\$80,000
50th percentile <b>(Median)</b>	\$78,000	\$85,798	\$76,000	\$73,500	\$78,000	\$79,000	\$95,000
75th percentile	\$92,000	\$98,000	\$90,000	\$86,200	\$90,000	\$90,000	\$105,000
Mean	\$81,560	\$85,913	\$79,058	\$77,377	\$82,675	\$80,697	\$93,977
Standard deviation	\$28,957	\$19,540	\$23,217	\$37,298	\$22,636	\$16,957	\$17,315
Mode	\$70,000	\$100,000	\$65,000	\$70,000	\$80,000	\$75,000	\$100,000
		Statistical significance: $F(5, 613) = 4.2, p = .001$ <u>Conclusion:</u> There is adequate evidence from the data to say that the means vary by facility type.					



14. If you are paid on an hourly basis, what is the hourly rate you receive at your main job?

Analyses limited to respondents who met the following criteria:

- ❖ CCC-SLP
- ❖ Paid primarily per hour
- ❖ Hourly wage of at least \$1

Hourly rate	Facility Type						
	All Facility Types	General Medical/VA/LTAC Hospital	Home Health/Client's Home	Outpatient Clinic/Office	Pediatric Hospital	Rehab Hospital	Skilled Nursing Facility
<b>Employed Full Time</b>							
	<i>n</i> = 695	<i>n</i> = 108	<i>n</i> = 40	<i>n</i> = 173	<i>n</i> = 21	<i>n</i> = 41	<i>n</i> = 300
25th percentile	\$37.00	\$36.21	\$42.50	\$36.00	<i>(n</i> < 25)	\$37.00	\$37.00
50th percentile <b>(Median)</b>	\$42.00	\$42.00	\$50.00	\$42.00		\$42.00	\$41.00
75th percentile	\$48.00	\$48.00	\$66.00	\$54.00		\$52.00	\$44.00
Mean	\$45.68	\$43.20	\$56.58	\$52.73		\$44.62	\$41.40
Standard deviation	\$19.47	\$10.01	\$24.54	\$31.94		\$10.96	\$6.26
Mode	\$40.00	\$50.00	\$50.00	\$50.00		\$52.00	\$40.00
		Statistical significance: $F(5, 677) = 12.0, p = .000$ <u>Conclusion:</u> There is adequate evidence from the data to say that the means vary by facility type.					
(Question 14 continues on next page.)							

14. (cont'd) If you are paid on an hourly basis, what is the hourly rate you receive at your main job?

Analyses limited to respondents who met the following criteria:

- ❖ CCC-SLP
- ❖ Paid primarily per hour
- ❖ Hourly wage of at least \$1

Hourly rate	Facility Type						
	All Facility Types	General Medical/VA/LTAC Hospital	Home Health/Client's Home	Outpatient Clinic/Office	Pediatric Hospital	Rehab Hospital	Skilled Nursing Facility
<b>Employed Part Time</b>							
	<i>n</i> = 429	<i>n</i> = 81	<i>n</i> = 39	<i>n</i> = 146	<i>n</i> = 13	<i>n</i> = 47	<i>n</i> = 95
25th percentile	\$42.00	\$40.10	\$50.00	\$41.00	<i>(n</i> < 25)	\$42.00	\$45.00
50th percentile <b>(Median)</b>	\$50.00	\$45.25	\$60.00	\$49.50		\$45.00	\$50.00
75th percentile	\$55.00	\$50.00	\$70.00	\$60.00		\$50.00	\$53.72
Mean	\$53.83	\$46.94	\$68.76	\$57.48		\$46.90	\$50.35
Standard deviation	\$24.23	\$8.92	\$35.43	\$30.14		\$8.14	\$8.39
Mode	\$50.00	\$50.00	\$60.00	\$50.00		\$45.00	\$50.00
	Statistical significance: $F(5, 415) = 8.4, p = .000$ <u>Conclusion:</u> There is adequate evidence from the data to say that the means vary by facility type.						

15. How many hours do you work per week for the hourly rate you entered in Q. 14? (Then, SKIP to Q. 17.)

Analyses limited to respondents who met the following criteria:

- ❖ CCC-SLP
- ❖ Paid primarily per hour
- ❖ Hourly wage of at least \$1

Hours	Facility Type						
	All Facility Types (n = 1,078)	General Medical/VA/ LTAC Hospital (n = 189)	Home Health/ Client's Home (n = 79)	Outpatient Clinic/Office (n = 319)	Pediatric Hospital (n = 34)	Rehab Hospital (n = 89)	Skilled Nursing Facility (n = 399)
25th percentile	20.0	20.0	14.0	16.0	20.0	20.0	30.0
50th percentile <b>(Median)</b>	32.0	32.0	24.0	28.0	33.0	28.0	35.0
75th percentile	39.5	40.0	32.0	36.0	40.0	39.0	40.0
Mean	28.7	29.4	23.0	26.0	30.6	26.9	31.8
Standard deviation	11.3	10.9	11.0	11.8	10.6	11.6	9.9
Mode	40.0	40.0	32.0	40.0	40.0	40.0	40.0
		Statistical significance: $F(5, 1052) = 15.0, p = .000$ <u>Conclusion:</u> There is adequate evidence from the data to say that the means vary by facility type.					

16. If you are paid per home visit, indicate your average per-visit rate.  
 Analyses limited to respondents who met the following criteria:
- ❖ CCC-SLP
  - ❖ Paid primarily per home visit
  - ❖ Per visit rate of at least \$1

Per-visit wage	Facility Type						
	All Facility Types (n = 240)	General Medical/VA/ LTAC Hospital (n = 2)	Home Health/ Client's Home (n = 184)	Outpatient Clinic/Office (n = 51)	Pediatric Hospital (n = 0)	Rehab Hospital (n = 0)	Skilled Nursing Facility (n = 1)
25th percentile	\$50.00	(n < 25)	\$55.00	\$37.00	(n < 25)	(n < 25)	(n < 25)
50th percentile <b>(Median)</b>	\$62.00		\$65.00	\$50.00			
75th percentile	\$78.45		\$80.00	\$70.00			
Mean	\$65.98		\$67.83	\$58.10			
Standard deviation	\$24.63		\$20.92	\$32.59			
Mode	\$50.00		\$60.00	\$50.00			
		Statistical significance: $F(3, 234) = 2.5, p = .057$ <u>Conclusion:</u> There is not enough evidence from the data to say that the responses vary by facility type.					

17. Did you work “off-the-clock” (i.e., unpaid) during 2018?  
 Analyses limited to respondents who met the following criteria:
- ❖ CCC-SLP
  - ❖ Employed full time or part time
  - ❖ Received an hourly or per-visit wage
  - ❖ Clinical service provider

Off-the-Clock Work	Facility Type						
	All Facility Types (n = 1,334)	General Medical/VA/ LTAC Hospital (n = 192)	Home Health/ Client’s Home (n = 257)	Outpatient Clinic/Office (n = 359)	Pediatric Hospital (n = 34)	Rehab Hospital (n = 89)	Skilled Nursing Facility (n = 383)
Yes—typically daily	23.1	6.8	40.9	29.2	8.8	11.2	17.2
Yes—typically a few times a week	20.3	16.1	22.6	22.8	23.5	14.6	19.8
Yes—typically a few times a month	16.1	16.7	12.1	16.7	26.5	16.9	16.4
No—never	40.6	60.4	24.5	31.2	41.2	57.3	46.5
		Statistical significance: $\chi^2(15) = 139.8$ , $p = .000$ , Cramer’s $V = .188$ <u>Conclusion</u> : There is adequate evidence from the data to say that the means vary by facility type.					

If you provide no clinical services, SKIP to Q. 24.

**Professional Services: Clinical Service Providers Only**

18. Of the time that you spend providing clinical services, approximately what percentage is spent with the following age groups? *Total must equal 100%.*

Analyses limited to respondents who met the following criteria:

- ❖ CCC-SLP
- ❖ Employed full time or part time
- ❖ Clinical service provider

Age Groups	Facility Type						
	All Facility Types (n = 1,898)	General Medical/VA/LTAC Hospital (n = 300)	Home Health/Client's Home (n = 330)	Outpatient Clinic/Office (n = 599)	Pediatric Hospital (n = 64)	Rehab Hospital (n = 160)	Skilled Nursing Facility (n = 414)
<b>Infant–Toddler</b>							
Mean	14.2	4.6	35.7	17.1	44.4	2.3	0.5
Standard deviation	25.8	16.1	42.1	17.2	28.5	9.4	3.5
		Statistical significance: $F(5, 1860) = 141.4, p = .000$ <u>Conclusion:</u> There is adequate evidence from the data to say that the means vary by facility type.					
<b>Preschool</b>							
Mean	13.6	1.8	11.4	31.1	27.8	3.0	0.4
Standard deviation	21.3	6.6	21.5	22.5	17.9	11.1	2.5
		Statistical significance: $F(5, 1860) = 239.6, p = .000$ <u>Conclusion:</u> There is adequate evidence from the data to say that the means vary by facility type.					

(Question 18 continues on next page.)

18. (cont'd) Of the time that you spend providing clinical services, approximately what percentage is spent with the following age groups? *Total must equal 100%.*

Analyses limited to respondents who met the following criteria:

- ❖ CCC-SLP
- ❖ Employed full time or part time
- ❖ Clinical service provider

Age Groups	Facility Type						
	All Facility Types (n = 1,898)	General Medical/VA/ LTAC Hospital (n = 254)	Home Health/ Client's Home (n = 301)	Outpatient Clinic/Office (n = 599)	Pediatric Hospital (n = 64)	Rehab Hospital (n = 160)	Skilled Nursing Facility (n = 414)
<b>School-Age Child</b>							
Mean	12.5	2.2	8.5	28.8	25.0	3.7	0.8
Standard deviation	20.7	7.9	18.6	23.8	21.5	9.9	4.7
		Statistical significance: $F(5, 1860) = 195.2, p = .000$ <u>Conclusion:</u> There is adequate evidence from the data to say that the means vary by facility type.					
<b>Adult</b>							
Mean	59.7	91.4	44.4	23.0	2.8	91.0	98.5
Standard deviation	46.0	21.5	47.3	36.4	7.5	24.2	8.1
		Statistical significance: $F(5, 1860) = 450.9, p = .000$ <u>Conclusion:</u> There is adequate evidence from the data to say that the means vary by facility type.					

*If you provide services to pediatric clients (infants through school age), answer Q. 19. If you provide services to adults, answer Q. 20. Answer Qs. 19 and 20 if you provide services to both age groups.*

19. Of the time that you spend providing PEDIATRIC services, approximately what percentage is spent in the following areas?  
*Total must equal 100%.*

Analyses limited to respondents who met the following criteria:

- ❖ CCC-SLP
- ❖ Employed full time or part time
- ❖ Clinical service provider

Pediatric Services	Facility Type						
	All Facility Types (n = 929)	General Medical/VA/ LTAC Hospital (n = 82)	Home Health/ Client's Home (n = 196)	Outpatient Clinic/Office (n = 511)	Pediatric Hospital (n = 64)	Rehab Hospital (n = 38)	Skilled Nursing Facility (n = 24)
<b>Augmentative and Alternative Communication (AAC)</b>							
Mean	5.3	2.0	5.1	5.3	8.7	3.1	(n < 25)
Standard deviation	10.0	5.6	7.9	8.7	18.3	6.4	
Statistical significance: $F(5, 908) = 4.2, p = .001$ <u>Conclusion:</u> There is adequate evidence from the data to say that the means vary by facility type.							
<b>Autism Spectrum Disorder</b>							
Mean	18.1	4.6	19.6	21.4	11.2	10.0	(n < 25)
Standard deviation	19.2	10.1	17.4	19.8	15.6	20.4	
Statistical significance: $F(5, 908) = 16.0, p = .000$ <u>Conclusion:</u> There is adequate evidence from the data to say that the means vary by facility type.							
(Question 19 continues on next page.)							



19. (cont'd) Of the time that you spend providing PEDIATRIC services, approximately what percentage is spent in the following areas? *Total must equal 100%.*

Analyses limited to respondents who met the following criteria:

- ❖ CCC-SLP
- ❖ Employed full time or part time
- ❖ Clinical service provider

Pediatric Services	Facility Type						
	All Facility Types (n = 929)	General Medical/VA/ LTAC Hospital (n = 82)	Home Health/ Client's Home (n = 196)	Outpatient Clinic/Office (n = 511)	Pediatric Hospital (n = 64)	Rehab Hospital (n = 38)	Skilled Nursing Facility (n = 24)
<b>Cognitive-Communication</b>							
Mean	8.6	9.6	12.4	6.1	6.3	26.6	(n < 25)
Standard deviation	16.3	22.5	18.5	10.9	10.7	32.7	
		Statistical significance: $F(5, 908) = 15.1, p = .000$ <u>Conclusion:</u> There is adequate evidence from the data to say that the means vary by facility type.					
<b>Fluency</b>							
Mean	2.6	1.3	1.3	3.1	3.0	6.0	(n < 25)
Standard deviation	7.2	3.6	5.3	5.9	10.2	21.0	
		Statistical significance: $F(5, 908) = 4.2, p = .001$ <u>Conclusion:</u> There is adequate evidence from the data to say that the means vary by facility type.					
(Question 19 continues on next page.)							

19. (cont'd) Of the time that you spend providing PEDIATRIC services, approximately what percentage is spent in the following areas? *Total must equal 100%.*

Analyses limited to respondents who met the following criteria:

- ❖ CCC-SLP
- ❖ Employed full time or part time
- ❖ Clinical service provider

Pediatric Services	Facility Type						
	All Facility Types (n = 929)	General Medical/VA/ LTAC Hospital (n = 82)	Home Health/ Client's Home (n = 196)	Outpatient Clinic/Office (n = 511)	Pediatric Hospital (n = 64)	Rehab Hospital (n = 38)	Skilled Nursing Facility (n = 24)
<b>Language and Literacy</b>							
Mean	23.1	11.3	27.4	24.4	14.5	18.5	(n < 25)
Standard deviation	21.0	18.3	22.5	19.3	18.1	23.2	
		Statistical significance: $F(5, 908) = 12.2, p = .000$ <u>Conclusion:</u> There is adequate evidence from the data to say that the means vary by facility type.					
<b>Speech Sound Disorders</b>							
Mean	21.5	14.9	20.6	25.1	9.5	11.7	(n < 25)
Standard deviation	20.0	24.6	19.5	18.7	11.5	17.2	
		Statistical significance: $F(5, 908) = 12.7, p = .000$ <u>Conclusion:</u> There is adequate evidence from the data to say that the means vary by facility type.					
(Question 19 continues on next page.)							

19. (cont'd) Of the time that you spend providing PEDIATRIC services, approximately what percentage is spent in the following areas? *Total must equal 100%.*

Analyses limited to respondents who met the following criteria:

- ❖ CCC-SLP
- ❖ Employed full time or part time
- ❖ Clinical service provider

Pediatric Services	Facility Type						
	All Facility Types (n = 929)	General Medical/VA/ LTAC Hospital (n = 82)	Home Health/ Client's Home (n = 196)	Outpatient Clinic/Office (n = 511)	Pediatric Hospital (n = 64)	Rehab Hospital (n = 38)	Skilled Nursing Facility (n = 24)
<b>Swallowing and Feeding</b>							
Mean	15.2	47.8	11.5	8.1	38.3	19.0	(n < 25)
Standard deviation	26.8	44.8	18.9	16.4	38.5	27.9	
		Statistical significance: $F(5, 908) = 54.9, p = .000$ <u>Conclusion:</u> There is adequate evidence from the data to say that the means vary by facility type.					
<b>Voice/Resonance</b>							
Mean	3.6	4.9	0.5	4.6	5.2	2.9	(n < 25)
Standard deviation	14.6	19.0	2.2	16.9	14.8	6.8	
		Statistical significance: $F(5, 908) = 2.5, p = .032$ <u>Conclusion:</u> There is not enough evidence from the data to say that the responses vary by facility type.					
(Question 19 continues on next page.)							

19. (cont'd) Of the time that you spend providing PEDIATRIC services, approximately what percentage is spent in the following areas? *Total must equal 100%.*

Analyses limited to respondents who met the following criteria:

- ❖ CCC-SLP
- ❖ Employed full time or part time
- ❖ Clinical service provider

Pediatric Services	Facility Type						
	All Facility Types (n = 929)	General Medical/VA/ LTAC Hospital (n = 82)	Home Health/ Client's Home (n = 196)	Outpatient Clinic/Office (n = 511)	Pediatric Hospital (n = 64)	Rehab Hospital (n = 38)	Skilled Nursing Facility (n = 24)
Other							
Mean	2.0	3.7	1.5	1.9	3.4	2.2	(n < 25)
Standard deviation	11.3	17.3	9.9	10.4	13.3	14.9	
Statistical significance: $F(5, 908) = 0.7, p = .629$ <u>Conclusion:</u> There is adequate evidence from the data to say that the means vary by facility type.							

20. Of the time that you spend providing ADULT services, approximately what percentage is spent in the following areas?  
*Total must equal 100%.*

Analyses limited to respondents who met the following criteria:

- ❖ CCC-SLP
- ❖ Employed full time or part time
- ❖ Clinical service provider

Adult Services	Facility Type						
	All Facility Types (n = 1,244)	General Medical/VA/LTAC Hospital (n = 276)	Home Health/Client's Home (n = 160)	Outpatient Clinic/Office (n = 253)	Pediatric Hospital (n = 11)	Rehab Hospital (n = 137)	Skilled Nursing Facility (n = 385)
<b>AAC</b>							
Mean	2.9	1.4	4.9	5.3	(n < 25)	1.6	1.5
Standard deviation	10.2	2.9	13.8	15.9		3.0	3.0
		Statistical significance: $F(5, 1215) = 15.8, p = .000$ <u>Conclusion:</u> There is adequate evidence from the data to say that the means vary by facility type.					
<b>Accent Modification/Communication Effectiveness</b>							
Mean	0.5	0.1	0.6	1.6	(n < 25)	0.2	0.2
Standard deviation	4.7	0.6	4.1	9.5		1.3	1.6
		Statistical significance: $F(5, 1215) = 3.6, p = .003$ <u>Conclusion:</u> There is adequate evidence from the data to say that the means vary by facility type.					
(Question 20 continues on next page.)							

20. (cont'd) Of the time that you spend providing ADULT services, approximately what percentage is spent in the following areas? *Total must equal 100%.*

Analyses limited to respondents who met the following criteria:

- ❖ CCC-SLP
- ❖ Employed full time or part time
- ❖ Clinical service provider

Adult Services	Facility Type						
	All Facility Types (n = 1,244)	General Medical/VA/LTAC Hospital (n = 276)	Home Health/Client's Home (n = 160)	Outpatient Clinic/Office (n = 253)	Pediatric Hospital (n = 11)	Rehab Hospital (n = 137)	Skilled Nursing Facility (n = 385)
<b>Aphasia</b>							
Mean	13.6	12.1	15.7	14.9	(n < 25)	20.3	10.6
Standard deviation	12.4	8.4	14.9	16.7		13.2	8.0
		Statistical significance: $F(5, 1215) = 15.5, p = .000$ <u>Conclusion:</u> There is adequate evidence from the data to say that the means vary by facility type.					
<b>Cognitive-Communication: Acquired Brain Injury</b>							
Mean	10.6	9.1	8.8	12.3	(n < 25)	23.5	6.6
Standard deviation	14.2	9.7	16.1	17.2		16.3	8.5
		Statistical significance: $F(5, 1215) = 35.6, p = .000$ <u>Conclusion:</u> There is adequate evidence from the data to say that the means vary by facility type.					
(Question 20 continues on next page.)							

20. (cont'd) Of the time that you spend providing ADULT services, approximately what percentage is spent in the following areas? *Total must equal 100%.*

Analyses limited to respondents who met the following criteria:

- ❖ CCC-SLP
- ❖ Employed full time or part time
- ❖ Clinical service provider

Adult Services	Facility Type						
	All Facility Types (n = 1,244)	General Medical/VA/LTAC Hospital (n = 276)	Home Health/Client's Home (n = 160)	Outpatient Clinic/Office (n = 253)	Pediatric Hospital (n = 11)	Rehab Hospital (n = 137)	Skilled Nursing Facility (n = 385)
<b>Cognitive-Communication: Dementia</b>							
Mean	13.7	5.1	18.7	5.7	(n < 25)	6.4	26.3
Standard deviation	16.8	8.0	19.5	12.6		8.2	16.6
Statistical significance: $F(5, 1215) = 115.5, p = .000$ <u>Conclusion:</u> There is adequate evidence from the data to say that the means vary by facility type.							
<b>Cognitive-Communication: Other</b>							
Mean	2.5	0.9	3.8	4.2	(n < 25)	1.1	2.4
Standard deviation	9.6	3.7	12.9	15.0		5.8	7.0
Statistical significance: $F(5, 1215) = 4.4, p = .001$ <u>Conclusion:</u> There is adequate evidence from the data to say that the means vary by facility type.							
(Question 20 continues on next page.)							

20. (cont'd) Of the time that you spend providing ADULT services, approximately what percentage is spent in the following areas? *Total must equal 100%.*

Analyses limited to respondents who met the following criteria:

- ❖ CCC-SLP
- ❖ Employed full time or part time
- ❖ Clinical service provider

Adult Services	Facility Type						
	All Facility Types (n = 1,244)	General Medical/VA/ LTAC Hospital (n = 276)	Home Health/ Client's Home (n = 160)	Outpatient Clinic/Office (n = 253)	Pediatric Hospital (n = 11)	Rehab Hospital (n = 137)	Skilled Nursing Facility (n = 385)
<b>Motor Speech</b>							
Mean	7.2	6.9	7.9	9.3	(n < 25)	8.8	5.4
Standard deviation	9.8	10.5	10.5	13.3		7.2	6.1
		Statistical significance: $F(5, 1215) = 6.5, p = .000$ <u>Conclusion:</u> There is adequate evidence from the data to say that the means vary by facility type.					
<b>Swallowing</b>							
Mean	39.8	58.6	32.8	21.3	(n < 25)	33.3	44.1
Standard deviation	24.2	21.7	20.5	21.9		18.9	18.2
		Statistical significance: $F(5, 1215) = 98.2, p = .000$ <u>Conclusion:</u> There is adequate evidence from the data to say that the means vary by facility type.					
(Question 20 continues on next page.)							



20. (cont'd) Of the time that you spend providing ADULT services, approximately what percentage is spent in the following areas? *Total must equal 100%.*

Analyses limited to respondents who met the following criteria:

- ❖ CCC-SLP
- ❖ Employed full time or part time
- ❖ Clinical service provider

Adult Services	Facility Type						
	All Facility Types (n = 1,244)	General Medical/VA/ LTAC Hospital (n = 276)	Home Health/ Client's Home (n = 160)	Outpatient Clinic/Office (n = 253)	Pediatric Hospital (n = 11)	Rehab Hospital (n = 137)	Skilled Nursing Facility (n = 385)
<b>Voice/Resonance</b>							
Mean	6.7	5.6	6.0	15.7	(n < 25)	4.6	2.8
Standard deviation	13.8	10.7	8.9	24.2		8.0	4.5
		Statistical significance: $F(5, 1215) = 31.8, p = .000$ <u>Conclusion:</u> There is adequate evidence from the data to say that the means vary by facility type.					
<b>Other</b>							
Mean	2.4	0.2	0.7	9.8	(n < 25)	0.3	0.2
Standard deviation	13.3	1.2	4.2	26.4		1.8	1.7
		Statistical significance: $F(5, 1215) = 23.8, p = .000$ <u>Conclusion:</u> There is adequate evidence from the data to say that the means vary by facility type.					

**Productivity: Clinical Service Providers Only**

21. Do you have a productivity requirement? (Percentages) Analyses limited to respondents who met the following criteria: ❖ CCC-SLP ❖ Employed full time or part time ❖ Clinical service provider							
Productivity Requirement	Facility Type						
	All Facility Types (n = 1,897)	General Medical/VA/ LTAC Hospital (n = 298)	Home Health/ Client's Home (n = 328)	Outpatient Clinic/Office (n = 600)	Pediatric Hospital (n = 66)	Rehab Hospital (n = 157)	Skilled Nursing Facility (n = 416)
Yes	61.1	75.5	32.0	43.0	78.8	69.4	94.2
No (SKIP to Q. 24.)	38.9	24.5	68.0	57.0	21.2	30.6	5.8
		Statistical significance: $\chi^2(5) = 431.2$ , $p = .000$ , Cramer's $V = .481$ <u>Conclusion:</u> There is adequate evidence from the data to say that the means vary by facility type.					



22. What is your productivity requirement?

Analyses limited to respondents who met the following criteria:

- ❖ CCC-SLP
- ❖ Employed full time or part time
- ❖ Clinical service provider
- ❖ Answered “Yes” to Q. 21

Productivity Requirement	Facility Type						
	All Facility Types (n = 1,053)	General Medical/VA/ LTAC Hospital (n = 225)	Home Health/ Client’s Home (n = 105)	Outpatient Clinic/Office (n = 258)	Pediatric Hospital (n = 52)	Rehab Hospital (n = 109)	Skilled Nursing Facility (n = 392)
25th percentile	75.0	65.0	70.0	70.0	60.0	75.0	80.0
50th percentile <b>(Median)</b>	80.0	75.0	80.0	75.0	66.0	80.0	85.0
75th percentile	85.0	85.0	90.0	80.0	75.0	85.0	88.0
Mean	79.0	76.1	77.8	75.7	68.4	78.1	84.3
Standard deviation	10.7	13.0	12.8	10.5	12.1	9.3	5.9
Mode	80.0	80.0	80.0	80.0	65.0	75.0	85.0
		Statistical significance: $F(5, 1032) = 43.6, p = .000$ <u>Conclusion:</u> There is adequate evidence from the data to say that the means vary by facility type.					

23. Which of the following activities count toward your productivity calculation when the patient is not present? *Select all that apply.* (Percentages; we changed the order of responses from alphabetic to descending order of frequencies.)

Analyses limited to respondents who met the following criteria:

- ❖ CCC-SLP
- ❖ Employed full time or part time
- ❖ Clinical service provider
- ❖ Answered “Yes” to Q. 21

Activities	Facility Type						
	All Facility Types (n = 1,159)	General Medical/VA/ LTAC Hospital (n ≥ 225)	Home Health/ Client’s Home (n ≥ 105)	Outpatient Clinic/Office (n = 258)	Pediatric Hospital (n ≥ 52)	Rehab Hospital (n ≥ 110)	Skilled Nursing Facility (n ≥ 392)
Clinical team meetings.	16.4	21.8	27.6	14.0	13.5	23.6	10.2
	Statistical significance: $\chi^2(5) = 31.1, p = .000$ , Cramer’s $V = .165$ <u>Conclusion:</u> There is adequate evidence from the data to say that the means vary by facility type.						
Documentation.	14.0	17.3	18.1	8.5	13.5	16.4	13.8
	Statistical significance: $\chi^2(5) = 10.5, p = .061$ <u>Conclusion:</u> There is not enough evidence from the data to say that the responses vary by facility type.						
In-services or informal staff training sessions.	14.0	14.7	21.0	14.0	7.5	19.1	11.0
	Statistical significance: $\chi^2(5) = 11.5, p = .042$ , Cramer’s $V = .100$ <u>Conclusion:</u> There is adequate evidence from the data to say that the means vary by facility type.						
Care coordination activities.	11.9	11.1	21.7	8.1	15.4	12.8	11.5
	Statistical significance: $\chi^2(5) = 14.1, p = .015$ , Cramer’s $V = .111$ <u>Conclusion:</u> There is adequate evidence from the data to say that the means vary by facility type.						

(Question 23 continues on next page.)

23. (cont'd) Which of the following activities count toward your productivity calculation when the patient is not present? *Select all that apply.* (Percentages; we changed the order of responses from alphabetic to descending order of frequencies.)

Analyses limited to respondents who met the following criteria:

- ❖ CCC-SLP
- ❖ Employed full time or part time
- ❖ Clinical service provider
- ❖ Answered “Yes” to Q. 21

Activities	Facility Type						
	All Facility Types (n = 1,159)	General Medical/VA/ LTAC Hospital (n ≥ 225)	Home Health/ Client’s Home (n ≥ 105)	Outpatient Clinic/Office (n = 258)	Pediatric Hospital (n ≥ 52)	Rehab Hospital (n ≥ 110)	Skilled Nursing Facility (n ≥ 392)
Other activities.	4.9	6.2	4.8	6.2	3.8	6.4	2.6
		Statistical significance: $\chi^2(5) = 7.2, p = .204$ <u>Conclusion:</u> There is not enough evidence from the data to say that the responses vary by facility type.					
Nothing counts when patient is not present.	69.0	67.6	55.2	72.5	73.1	64.2	72.3
		Statistical significance: $\chi^2(5) = 14.5, p = .013$ , Cramer’s V = .113 <u>Conclusion:</u> There is adequate evidence from the data to say that the means vary by facility type.					

**Career Transitions**

24. Do you anticipate making any of the following changes to your main job in the next 5 years? *Select all that apply.*  
 (Percentages; we changed the order of responses from alphabetic to descending order of frequencies.)  
 Analyses limited to respondents who met the following criterion:  
 ❖ CCC-SLP

Transition	Facility Type						
	All Facility Types (n = 2,232)	General Medical/VA/ LTAC Hospital (n = 332)	Home Health/ Client's Home (n ≥ 363)	Outpatient Clinic/Office (n ≥ 714)	Pediatric Hospital (n = 73)	Rehab Hospital (n = 180)	Skilled Nursing Facility (n = 485)
To another professional setting, as an SLP	14.6	9.0	13.2	16.4	17.8	14.4	18.4
	Statistical significance: $\chi^2(5) = 16.0$ , $p = .007$ , Cramer's $V = .086$ <u>Conclusion:</u> There is adequate evidence from the data to say that the means vary by facility type.						
To another type of health care setting (e.g., from SNF to outpatient)	11.8	9.6	6.6	7.3	8.2	8.9	26.6
	Statistical significance: $\chi^2(5) = 126.9$ , $p = .000$ , Cramer's $V = .243$ <u>Conclusion:</u> There is adequate evidence from the data to say that the means vary by facility type.						
To retirement	10.8	13.0	13.8	10.6	6.8	11.1	8.9
	Statistical significance: $\chi^2(5) = 7.8$ , $p = .170$ <u>Conclusion:</u> There is not enough evidence from the data to say that the responses vary by facility type.						
To a non-SLP profession	8.1	5.4	9.4	6.9	6.8	7.2	12.4
	Statistical significance: $\chi^2(5) = 17.1$ , $p = .004$ , Cramer's $V = .089$ <u>Conclusion:</u> There is adequate evidence from the data to say that the means vary by facility type.						

(Question 24 continues on next page.)

24. (cont'd) Do you anticipate making any of the following changes to your main job in the next 5 years? *Select all that apply.*  
 (Percentages; we changed the order of responses from alphabetic to descending order of frequencies.)  
 Analyses limited to respondents who met the following criterion:  
 ❖ CCC-SLP

Clinical Approaches	Facility Type						
	All Facility Types (n = 2,232)	General Medical/VA/LTAC Hospital (n = 332)	Home Health/Client's Home (n ≥ 363)	Outpatient Clinic/Office (n ≥ 714)	Pediatric Hospital (n = 73)	Rehab Hospital (n = 180)	Skilled Nursing Facility (n = 485)
To schools	6.7	2.7	8.8	8.4	9.6	4.4	6.2
	Statistical significance: $\chi^2(5) = 16.6, p = .005$ , Cramer's $V = .088$ <u>Conclusion:</u> There is adequate evidence from the data to say that the means vary by facility type.						
To academia	4.1	3.0	3.6	4.9	9.6	3.9	3.9
	Statistical significance: $\chi^2(5) = 7.7, p = .173$ <u>Conclusion:</u> There is not enough evidence from the data to say that the responses vary by facility type.						
Other career change (SKIP to Q. 26.)	3.7	3.0	3.8	2.4	5.5	6.1	5.4
	Statistical significance: $\chi^2(5) = 10.9, p = .053$ <u>Conclusion:</u> There is not enough evidence from the data to say that the responses vary by facility type.						
None of the above (SKIP to Q. 26.)	53.5	63.0	56.7	57.6	47.9	53.9	43.9
	Statistical significance: $\chi^2(5) = 36.3, p = .000$ , Cramer's $V = .130$ <u>Conclusion:</u> There is adequate evidence from the data to say that the means vary by facility type.						

25. What factors are causing you to seek a career change? *Select all that apply.* (Percentages; we changed the order of responses from alphabetic to descending order of frequencies.)

Analyses limited to respondents who met the following criterion:

❖ CCC-SLP

Factor	Facility Type						
	All Facility Types (n = 2,232)	General Medical/VA/LTAC Hospital (n ≥ 331)	Home Health/Client's Home (n ≥ 363)	Outpatient Clinic/Office (n ≥ 714)	Pediatric Hospital (n = 73)	Rehab Hospital (n = 180)	Skilled Nursing Facility (n ≥ 485)
Family/personal circumstances	17.4	15.7	17.1	18.5	27.4	16.1	18.4
	Statistical significance: $\chi^2(5) = 6.3, p = .274$ <u>Conclusion:</u> There is not enough evidence from the data to say that the responses vary by facility type.						
Unsatisfactory salary/benefits	12.2	6.6	9.6	13.8	11.0	12.8	16.9
	Statistical significance: $\chi^2(5) = 23.1, p = .000$ , Cramer's V = .104 <u>Conclusion:</u> There is adequate evidence from the data to say that the means vary by facility type.						
High productivity demands	11.5	8.4	5.0	7.4	11.0	13.9	24.5
	Statistical significance: $\chi^2(5) = 110.1, p = .000$ , Cramer's V = .226 <u>Conclusion:</u> There is adequate evidence from the data to say that the means vary by facility type.						
Not being valued by other types of professionals or by administrators	10.8	9.9	6.9	8.5	12.3	15.6	17.1
	Statistical significance: $\chi^2(5) = 33.1, p = .000$ , Cramer's V = .124 <u>Conclusion:</u> There is adequate evidence from the data to say that the means vary by facility type.						

(Question 25 continues on next page.)



25. (cont'd) What factors are causing you to seek a career change? *Select all that apply.* (Percentages; we changed the order of responses from alphabetic to descending order of frequencies.)

Analyses limited to respondents who met the following criterion:

❖ CCC-SLP

Factor	Facility Type						
	All Facility Types (n = 2,232)	General Medical/VA/ LTAC Hospital (n ≥ 331)	Home Health/ Client's Home (n ≥ 363)	Outpatient Clinic/Office (n ≥ 714)	Pediatric Hospital (n = 73)	Rehab Hospital (n = 180)	Skilled Nursing Facility (n ≥ 485)
Paperwork (clinical and reimbursement)	10.8	4.8	12.6	11.6	11.0	10.0	13.4
		Statistical significance: $\chi^2(5) = 17.2$ , $p = .004$ , Cramer's $V = .089$ <u>Conclusion:</u> There is adequate evidence from the data to say that the means vary by facility type.					
Insufficient reimbursement for patient care	5.2	2.4	7.7	6.7	1.4	3.9	4.3
		Statistical significance: $\chi^2(5) = 16.6$ , $p = .005$ , Cramer's $V = .088$ <u>Conclusion:</u> There is adequate evidence from the data to say that the means vary by facility type.					
Low/unsustainable caseload	4.8	2.1	4.7	2.7	1.4	2.8	11.8
		Statistical significance: $\chi^2(5) = 65.5$ , $p = .000$ , Cramer's $V = .175$ <u>Conclusion:</u> There is adequate evidence from the data to say that the means vary by facility type.					
Managing caseloads at multiple sites	3.7	2.1	2.5	3.6	1.4	2.2	6.6
		Statistical significance: $\chi^2(5) = 17.6$ , $p = .003$ , Cramer's $V = .091$ <u>Conclusion:</u> There is adequate evidence from the data to say that the means vary by facility type.					
		(Question 25 continues on next page.)					

25. (cont'd) What factors are causing you to seek a career change? *Select all that apply.* (Percentages; we changed the order of responses from alphabetic to descending order of frequencies.)

Analyses limited to respondents who met the following criterion:

❖ CCC-SLP

Factor	Facility Type						
	All Facility Types (n = 2,232)	General Medical/VA/ LTAC Hospital (n ≥ 331)	Home Health/ Client's Home (n ≥ 363)	Outpatient Clinic/Office (n ≥ 714)	Pediatric Hospital (n = 73)	Rehab Hospital (n = 180)	Skilled Nursing Facility (n ≥ 485)
Keeping current with advances in clinical information related to my caseload	3.5	2.1	3.6	3.6	4.1	2.8	4.7
	Statistical significance: $\chi^2(5) = 4.4, p = .500$ <u>Conclusion:</u> There is not enough evidence from the data to say that the responses vary by facility type.						
None of the above	12.3	16.0	11.5	13.7	11.0	11.7	9.1
	Statistical significance: $\chi^2(5) = 10.4, p = .064$ <u>Conclusion:</u> There is not enough evidence from the data to say that the responses vary by facility type.						

## Alternative Payment Models

26. How familiar are you with the concept of alternative payment models in health care delivery and payment? (Percentages)  
 Analyses limited to respondents who met the following criterion:  
 ❖ CCC-SLP

Locations	Facility Type						
	All Facility Types (n = 2,146)	General Medical/VA/ LTAC Hospital (n = 324)	Home Health/ Client's Home (n = 358)	Outpatient Clinic/Office (n = 705)	Pediatric Hospital (n = 73)	Rehab Hospital (n = 177)	Skilled Nursing Facility (n = 477)
Have never heard of it.	51.6	51.9	53.1	59.4	69.9	49.7	36.1
Have only <i>heard</i> of it.	24.2	26.2	23.5	21.7	17.8	24.9	27.9
Know a little about it.	20.3	19.8	20.9	15.7	8.2	20.3	28.7
Know a lot about it.	3.9	2.2	2.5	3.1	4.1	5.1	7.3
		Statistical significance: $\chi^2(15) = 91.2, p = .000$ , Cramer's $V = .120$ <u>Conclusion:</u> There is adequate evidence from the data to say that the responses vary by facility type.					



## Multiskilling

*Multiskilling refers to cross-training of basic patient care skills (e.g., taking vitals), professional non-clinical skills (e.g., patient/ family education on medication compliance), administrative skills (e.g., quality improvement activities) and/or cross-training of clinical disciplines (e.g., suctioning individuals with tracheostomies).*

*Multiskilling activities are provided within the contexts of the ASHA Code of Ethics, federal/ state laws and regulations, and reimbursement and regulatory guidelines.*

27. The following activities are not included in ASHA’s scope of practice for SLPs. Which are you required to do as part of your job? See “Multiskilling” definition in box, above. Select all that apply. (Percentages; we changed the order of responses from alphabetic to descending order of frequencies.)

Analyses limited to respondents who met the following criteria:

- ❖ CCC-SLP
- ❖ Employed full time or part time
- ❖ Primarily clinical service provider

Activity	Facility Type						
	All Facility Types (n = 1,942)	General Medical/VA/ LTAC Hospital (n ≥ 303)	Home Health/ Client’s Home (n = 340)	Outpatient Clinic/Office (n ≥ 617)	Pediatric Hospital (n = 67)	Rehab Hospital (n = 164)	Skilled Nursing Facility (n = 419)
Physical transfers of patients	25.1	41.8	14.1	14.7	26.9	53.7	25.3
	Statistical significance: $\chi^2(5) = 173.9$ , $p = .000$ , Cramer’s $V = .302$ <u>Conclusion</u> : There is adequate evidence from the data to say that the means vary by facility type.						
Vitals	19.6	18.8	37.5	7.9	10.4	25.6	21.6
	Statistical significance: $\chi^2(5) = 131.1$ , $p = .000$ , Cramer’s $V = .262$ <u>Conclusion</u> : There is adequate evidence from the data to say that the means vary by facility type.						

(Question 27 continues on next page.)

27. (cont'd) The following activities are not included in ASHA's scope of practice for SLPs. Which are you required to do as part of your job? See "Multiskilling" definition in box, above. Select all that apply. (Percentages; we changed the order of responses from alphabetic to descending order of frequencies.)

Analyses limited to respondents who met the following criteria:

- ❖ CCC-SLP
- ❖ Employed full time or part time
- ❖ Primarily clinical service provider

Activity	Facility Type						
	All Facility Types (n = 1,942)	General Medical/VA/ LTAC Hospital (n ≥ 303)	Home Health/ Client's Home (n = 340)	Outpatient Clinic/Office (n ≥ 617)	Pediatric Hospital (n = 67)	Rehab Hospital (n = 164)	Skilled Nursing Facility (n = 419)
Suctioning	17.6	45.4	7.4	7.9	16.4	34.1	12.6
	Statistical significance: $\chi^2(5) = 267.0$ , $p = .000$ , Cramer's $V = .374$ <u>Conclusion</u> : There is adequate evidence from the data to say that the means vary by facility type.						
Medication reconciliation	10.7	5.6	32.4	3.4	6.0	7.3	9.3
	Statistical significance: $\chi^2(5) = 215.3$ , $p = .000$ , Cramer's $V = .336$ <u>Conclusion</u> : There is adequate evidence from the data to say that the means vary by facility type.						
Other*	3.3	4.0	5.6	2.1	4.5	4.9	1.9
	Statistical significance: $\chi^2(5) = 12.9$ , $p = .024$ , Cramer's $V = .082$ <u>Conclusion</u> : There is adequate evidence from the data to say that the means vary by facility type.						
Wound measurement/ management	2.1	1.3	7.4	0.5	1.5	1.8	1.0
	Statistical significance: $\chi^2(5) = 57.4$ , $p = .000$ , Cramer's $V = .173$ <u>Conclusion</u> : There is adequate evidence from the data to say that the means vary by facility type.						

(Question 27 continues on next page.)

27. (cont'd) The following activities are not included in ASHA's scope of practice for SLPs. Which are you required to do as part of your job? See "Multiskilling" definition in box, above. Select all that apply. (Percentages; we changed the order of responses from alphabetic to descending order of frequencies.)

Analyses limited to respondents who met the following criteria:

- ❖ CCC-SLP
- ❖ Employed full time or part time
- ❖ Primarily clinical service provider

Activity	Facility Type						
	All Facility Types (n = 1,942)	General Medical/VA/ LTAC Hospital (n ≥ 303)	Home Health/ Client's Home (n = 340)	Outpatient Clinic/Office (n ≥ 617)	Pediatric Hospital (n = 67)	Rehab Hospital (n = 164)	Skilled Nursing Facility (n = 419)
None of the above (SKIP to Q. 29.)	58.9	37.0	54.7	77.3	61.2	36.6	59.9
	Statistical significance: $\chi^2(5) = 183.3, p = .000$ , Cramer's $V = .310$ <u>Conclusion:</u> There is adequate evidence from the data to say that the means vary by facility type.						

\*Note. Contact [healthservices@asha.org](mailto:healthservices@asha.org) for additional information about other responses that were specified by respondents.

28. How well prepared were you by your current employer to perform the activities in Q. 27? (Percentages we changed the order of responses from alphabetic to descending order of frequencies in Q. 27.)

Analyses limited to respondents who met the following criteria:

- ❖ CCC-SLP
- ❖ Employed full time or part time
- ❖ Primarily clinical service provider

Scale: 1 = Not at all prepared  
 2 = Minimally prepared  
 3 = Fairly well prepared  
 4 = Very well prepared  
 NA = Not applicable

Preparation	Facility Type						
	All Facility Types	General Medical/VA/LTAC Hospital	Home Health/Client's Home	Outpatient Clinic/Office	Pediatric Hospital	Rehab Hospital	Skilled Nursing Facility
<b>Physical Transfers of Patients</b>							
	<i>n</i> = 656	<i>n</i> = 158	<i>n</i> = 115	<i>n</i> = 113	<i>n</i> = 22	<i>n</i> = 98	<i>n</i> = 140
Not at all prepared	9.2	5.1	8.7	13.3	( <i>n</i> < 25)	4.1	14.3
Minimally prepared	20.4	19.0	20.0	23.0		15.3	25.0
Fairly well prepared	26.7	29.7	13.0	23.0		38.8	26.4
Very well prepared	24.0	27.8	14.8	28.3		32.7	17.9
Not applicable	19.8	18.4	43.5	12.4		9.2	16.4
		Statistical significance: $\chi^2(20) = 83.8, p = .000$ , Cramer's <i>V</i> = .180 <u>Conclusion:</u> There is adequate evidence from the data to say that the responses vary by facility type.					

(Question 28 continues on next page.)

28. (cont'd) How well prepared were you by your current employer to perform the activities in Q. 27? (Percentages; we changed the order of responses from alphabetic to descending order of frequencies in Q. 27.)

Analyses limited to respondents who met the following criteria:

- ❖ CCC-SLP
- ❖ Employed full time or part time
- ❖ Primarily clinical service provider

Scale: 1 = Not at all prepared  
 2 = Minimally prepared  
 3 = Fairly well prepared  
 4 = Very well prepared  
 NA = Not applicable

Preparation	Facility Type						
	All Facility Types	General Medical/VA/LTAC Hospital	Home Health/Client's Home	Outpatient Clinic/Office	Pediatric Hospital	Rehab Hospital	Skilled Nursing Facility
<b>Vitals</b>							
	<i>n</i> = 603	<i>n</i> = 129	<i>n</i> = 133	<i>n</i> = 100	<i>n</i> = 21	<i>n</i> = 71	<i>n</i> = 139
Not at all prepared	7.1	0.0	5.3	10.0	<i>n</i> < 25	8.5	12.9
Minimally prepared	16.9	9.3	21.1	16.0		16.9	20.1
Fairly well prepared	23.3	22.5	25.6	20.0		19.7	24.5
Very well prepared	22.0	15.5	45.1	12.0		18.3	18.7
Not applicable	30.6	52.7	3.0	42.0		36.6	23.7
		Statistical significance: $\chi^2(20) = 133.2, p = .000$ , Cramer's <i>V</i> = .237 <u>Conclusion:</u> There is adequate evidence from the data to say that the responses vary by facility type.					

(Question 28 continues on next page.)



28. (cont'd) How well prepared were you by your current employer to perform the activities in Q. 27? (Percentages; we changed the order of responses from alphabetic to descending order of frequencies in Q. 27.)

Analyses limited to respondents who met the following criteria:

- ❖ CCC-SLP
- ❖ Employed full time or part time
- ❖ Primarily clinical service provider

Scale: 1 = Not at all prepared  
 2 = Minimally prepared  
 3 = Fairly well prepared  
 4 = Very well prepared  
 NA = Not applicable

Preparation	Facility Type						
	All Facility Types	General Medical/VA/LTAC Hospital	Home Health/Client's Home	Outpatient Clinic/Office	Pediatric Hospital	Rehab Hospital	Skilled Nursing Facility
<b>Suctioning</b>							
	<i>n</i> = 615	<i>n</i> = 168	<i>n</i> = 105	<i>n</i> = 104	<i>n</i> = 21	<i>n</i> = 76	<i>n</i> = 128
Not at all prepared	9.6	4.8	10.5	11.5	<i>n</i> < 25	7.9	14.1
Minimally prepared	11.9	11.9	4.8	11.5		15.8	14.1
Fairly well prepared	15.4	21.4	7.6	11.5		27.6	8.6
Very well prepared	25.9	46.4	14.3	18.3		25.0	16.4
Not applicable	37.2	15.5	62.9	47.1		23.7	46.9
		Statistical significance: $\chi^2(20) = 123.1, p = .000$ , Cramer's <i>V</i> = .226 <u>Conclusion:</u> There is adequate evidence from the data to say that the responses vary by facility type.					

(Question 28 continues on next page.)

28. (cont'd) How well prepared were you by your current employer to perform the activities in Q. 27? (Percentages; we changed the order of responses from alphabetic to descending order of frequencies in Q. 27.)

Analyses limited to respondents who met the following criteria:

- ❖ CCC-SLP
- ❖ Employed full time or part time
- ❖ Primarily clinical service provider

Scale: 1 = Not at all prepared  
 2 = Minimally prepared  
 3 = Fairly well prepared  
 4 = Very well prepared  
 NA = Not applicable

Preparation	Facility Type						
	All Facility Types	General Medical/VA/LTAC Hospital	Home Health/Client's Home	Outpatient Clinic/Office	Pediatric Hospital	Rehab Hospital	Skilled Nursing Facility
<b>Medication Reconciliation</b>							
	<i>n</i> = 544	<i>n</i> = 120	<i>n</i> = 129	<i>n</i> = 89	<i>n</i> = 19	<i>n</i> = 62	<i>n</i> = 119
Not at all prepared	10.8	5.0	13.2	9.0	( <i>n</i> < 25)	6.5	16.8
Minimally prepared	15.2	5.8	28.7	10.1		9.7	17.6
Fairly well prepared	11.3	4.2	25.6	9.0		4.8	7.6
Very well prepared	7.7	3.3	23.3	4.5		1.6	2.5
Not applicable	55.1	81.7	9.3	67.4		77.4	55.5
		Statistical significance: $\chi^2(20) = 194.8, p = .000$ , Cramer's <i>V</i> = .301 <u>Conclusion:</u> There is adequate evidence from the data to say that the responses vary by facility type.					
(Question 28 continues on next page.)							

28. (cont'd) How well prepared were you by your current employer to perform the activities in Q. 27? (Percentages; we changed the order of responses from alphabetic to descending order of frequencies in Q. 27.)

Analyses limited to respondents who met the following criteria:

- ❖ CCC-SLP
- ❖ Employed full time or part time
- ❖ Primarily clinical service provider

Scale: 1 = Not at all prepared  
 2 = Minimally prepared  
 3 = Fairly well prepared  
 4 = Very well prepared  
 NA = Not applicable

Preparation	Facility Type						
	All Facility Types	General Medical/VA/LTAC Hospital	Home Health/Client's Home	Outpatient Clinic/Office	Pediatric Hospital	Rehab Hospital	Skilled Nursing Facility
<b>Wound Measurement/Management</b>							
	<i>n</i> = 486	<i>n</i> = 114	<i>n</i> = 103	<i>n</i> = 85	<i>n</i> = 19	<i>n</i> = 58	<i>n</i> = 104
Not at all prepared	11.1	4.4	16.5	8.2	<i>n</i> < 25	5.2	19.2
Minimally prepared	4.6	0.9	15.5	2.4		1.7	1.0
Fairly well prepared	1.6	1.8	2.9	3.5		0.0	0.0
Very well prepared	1.4	0.0	3.9	1.2		3.4	0.0
Not applicable	81.3	93.0	61.2	84.7		89.7	79.8
		Too many cells (60%) have an expected count of fewer than 5. <u>Conclusion:</u> Too little data are available in some facility categories to test whether responses vary by facility type.					

## Demographics

29. Which <u>one</u> of the following best describes where you work? Analyses limited to respondents who met the following criteria: ❖ CCC-SLP ❖ Employed full time or part time							
Response	Facility Type						
	All Facility Types (n = 2,135)	General Medical/VA/ LTAC Hospital (n = 328)	Home Health/ Client's Home (n = 345)	Outpatient Clinic/Office (n = 704)	Pediatric Hospital (n = 73)	Rehab Hospital (n = 178)	Skilled Nursing Facility (n = 475)
City/urban area	43.6	59.1	34.8	40.3	78.1	60.1	32.8
Suburban area	39.9	26.2	44.3	46.0	20.5	34.3	41.9
Rural area	16.5	14.6	20.9	13.6	1.4	5.6	25.3
		Statistical significance: $\chi^2(10) = 155.3$ , $p = .000$ , Cramer's $V = .192$ <u>Conclusion:</u> There is adequate evidence from the data to say that the responses vary by facility type.					



30. In what state is your primary employment FACILITY located? Use two-letter state postal code (e.g., MO for Missouri).

Analyses limited to respondents who met the following criteria:

- ❖ CCC-SLP
- ❖ Employed full time or part time

Region and Division	Facility Type						
	All Facility Types (n = 2,166)	General Medical/VA/ LTAC Hospital (n = 329)	Home Health/ Client's Home (n = 363)	Outpatient Clinic/Office (n = 709)	Pediatric Hospital (n = 72)	Rehab Hospital (n ≥ 179)	Skilled Nursing Facility (n ≥ 477)
<b>Northeast</b>	<b>17.8</b>	<b>16.4</b>	<b>24.5</b>	<b>14.4</b>	<b>15.3</b>	<b>23.5</b>	<b>16.5</b>
Middle Atlantic	13.1	11.2	19.3	10.4	11.1	16.7	11.9
New England	4.7	5.2	5.0	3.9	4.2	6.7	4.4
<b>Midwest</b>	<b>25.6</b>	<b>24.9</b>	<b>18.5</b>	<b>26.1</b>	<b>26.4</b>	<b>23.5</b>	<b>31.2</b>
East North Central	17.3	17.9	15.4	16.2	19.4	14.4	21.4
West North Central	8.2	7.3	3.0	10.0	6.9	9.4	9.9
<b>South</b>	<b>38.5</b>	<b>37.4</b>	<b>35.8</b>	<b>38.4</b>	<b>40.3</b>	<b>33.0</b>	<b>44.4</b>
East South Central	6.1	7.0	4.1	5.2	4.2	5.0	9.2
South Atlantic	20.6	21.3	19.0	21.2	23.6	16.1	21.8
West South Central	11.8	8.8	12.9	11.8	12.5	11.7	13.4
<b>West</b>	<b>18.1</b>	<b>21.3</b>	<b>21.2</b>	<b>21.2</b>	<b>18.1</b>	<b>20.1</b>	<b>7.9</b>
Mountain	7.4	8.2	8.5	8.9	8.3	8.3	3.8
Pacific	10.7	13.1	12.7	12.3	9.7	11.7	4.2
		FOR 4 REGIONS: $\chi^2(15) = 73.4, p = .000$ , Cramer's $V = .107$ FOR 9 DIVISIONS: $\chi^2(40) = 99.1, p = .000$ , Cramer's $V = .096$ <u>Conclusion:</u> There is adequate evidence from the data to say that the responses vary by facility type.					

Note. Division frequencies may not equal those of the region, and column sums may not equal 100% because of rounding. List of states in each division and region are located in the Appendix.

31. Identify any graduate degrees you have earned. *Count only actual earned degrees—not equivalencies or certificates—and do not include degrees expected but not yet conferred. Select all that apply.*

Analyses limited to respondents who met the following criterion:

❖ CCC-SLP

Degrees	Facility Type						
	All Facility Types	General Medical/VA/LTAC Hospital	Home Health/Client's Home	Outpatient Clinic/Office	Pediatric Hospital	Rehab Hospital	Skilled Nursing Facility
	<i>n</i> = 2,232	<i>n</i> ≥ 331	<i>n</i> ≥ 363	<i>n</i> ≥ 714	<i>n</i> = 73	<i>n</i> = 180	<i>n</i> ≥ 485
Master's	98.4	98.8	99.2	97.9	98.6	98.3	99.0
Research doctorate (i.e., PhD)	1.2	1.2	0.8	1.4	4.1	1.1	0.6
Clinical doctorate (e.g., SLPD, CScD)	0.5	0.6	0.0	0.8	0.0	0.6	0.6
Other doctorate	0.5	0.6	0.3	0.6	1.4	0.6	0.6
<b>Recoded, combining doctoral degrees</b>							
	<i>n</i> = 2,225	<i>n</i> = 330	<i>n</i> = 363	<i>n</i> = 714	<i>n</i> = 73	<i>n</i> = 180	<i>n</i> = 484
Master's	97.8	97.9	98.6	97.2	94.5	97.8	98.3
Doctorate	2.2	2.1	1.4	2.8	5.5	2.2	1.7
		Statistical significance: $\chi^2(5) = 6.5, p = .257$ <u>Conclusion:</u> There is not enough evidence from the data to say that the responses vary by facility type.					

32. How many years have you been employed in the speech-language pathology profession? *Exclude your clinical fellowship. Round to the nearest full year. Enter "0" if you have never been employed as an SLP.*

Analyses limited to respondents who met the following criterion:

❖ CCC-SLP

Experience	Facility Type						
	All Facility Types (n = 2,229)	General Medical/VA/ LTAC Hospital (n = 332)	Home Health/ Client's Home (n = 364)	Outpatient Clinic/Office (n = 713)	Pediatric Hospital (n = 72)	Rehab Hospital (n = 180)	Skilled Nursing Facility (n = 485)
25th percentile	6.0	7	8	6	5	5	6
50th percentile <b>(Median)</b>	13.0	15	15	13	10	11	12
75th percentile	24.0	23	25	24	20	23	23
Mean	16.3	16	17	16	14	15	15
Standard deviation	12.0	11	12	12	11	12	12
Mode	3.0	20	6	3	10	5	10
		Statistical significance: $F(5, 2139) = 2.2, p = .053$ <u>Conclusion:</u> There is not enough evidence from the data to say that the responses vary by facility type.					

33. In what year were you born? (Note: Data were converted to age.)

Analyses limited to respondents who met the following criterion:

❖ CCC-SLP

Age	Facility Type						
	All Facility Types (n = 2,226)	General Medical/VA/ LTAC Hospital (n = 332)	Home Health/ Client's Home (n = 364)	Outpatient Clinic/Office (n = 715)	Pediatric Hospital (n = 73)	Rehab Hospital (n = 180)	Skilled Nursing Facility (n = 485)
25th percentile	32.0	33	34	32	30	32	31
50th percentile <b>(Median)</b>	40.0	41	43	39	36	37	38
75th percentile	52.0	51	54	52	48	51	52
Mean	42.9	43	45	43	40	42	42
Standard deviation	12.7	11	12	13	12	12	13
Mode	29.0	41	33	27	35	29	29
		Statistical significance: $F(5, 2137) = 2.9, p = .013$ <u>Conclusion:</u> There is adequate evidence from the data to say that the means vary by facility type.					

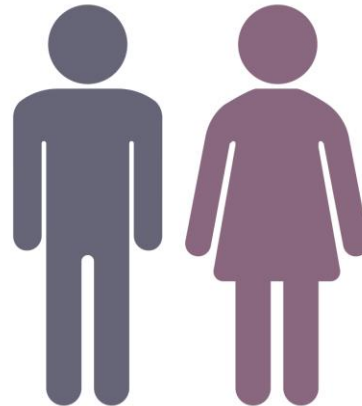


34. Are you (Percentages)

Analyses limited to respondents who met the following criterion:

❖ CCC-SLP

Sex	Facility Type						
	All Facility Types (n = 2,229)	General Medical/VA/ LTAC Hospital (n = 332)	Home Health/ Client's Home (n = 363)	Outpatient Clinic/Office (n = 715)	Pediatric Hospital (n = 73)	Rehab Hospital (n = 179)	Skilled Nursing Facility (n = 483)
Female	95.8	95.8	94.2	96.1	97.3	95.5	96.1
Male	4.2	4.2	5.8	3.9	2.7	4.5	3.9
		Statistical significance: $\chi^2(5) = 2.8, p = .728$ <u>Conclusion:</u> There is not enough evidence from the data to say that the responses vary by facility type.					



35. How much unpaid student debt do you have? Enter "0" if none.

Analyses limited to respondents who met the following criteria:

- ❖ CCC-SLP
- ❖ Student debt of at least \$1

Student Debt	Facility Type						
	All Facility Types (n = 683)	General Medical/VA/ LTAC Hospital (n = 91)	Home Health/ Client's Home (n = 103)	Outpatient Clinic/Office (n = 211)	Pediatric Hospital (n = 27)	Rehab Hospital (n = 56)	Skilled Nursing Facility (n = 174)
25th percentile	\$20,000	\$18,000	\$20,000	\$17,000	\$28,750	\$22,436	\$22,000
50th percentile <b>(Median)</b>	\$40,000	\$34,800	\$40,000	\$35,000	\$48,500	\$46,000	\$40,000
75th percentile	\$70,000	\$58,000	\$56,000	\$70,000	\$78,000	\$70,000	\$70,000
Mean	\$49,958	\$45,740	\$43,245	\$48,609	\$57,034	\$54,109	\$52,578
Standard deviation	\$45,050	\$43,831	\$32,810	\$42,688	\$41,186	\$41,598	\$53,625
Mode	\$30,000	\$20,000	\$40,000	\$20,000	\$40,000	\$60,000	\$70,000
		Statistical significance: $F(5, 655) = 1.0, p = .423$ <u>Conclusion:</u> There is not enough evidence from the data to say that the responses vary by facility type.					



## **Appendix**

*Facilities comprising the six health care facilities for which data are provided in the frequency tables:*

“General Medical/VA/LTAC Hospital”

- General medical hospital
- Veterans Affairs (VA) hospital
- Long-term acute care hospital (LTAC) hospital

“Home Health Agency or Client’s Home”

“Outpatient Clinic/Office”

- Nonresidential health care facility
- Private MD’s office
- Speech-language pathologist’s or audiologist’s office
- Speech and hearing center or clinic
- Speech/language clinic
- Outpatient rehabilitation center

“Pediatric Hospital”

“Rehab Hospital”

“SNF”

- Skilled nursing facility

## Regions of the Country

### Northeast

- ◆ Middle Atlantic
  - New Jersey
  - New York
  - Pennsylvania
- ◆ New England
  - Connecticut
  - Maine
  - Massachusetts
  - New Hampshire
  - Rhode Island
  - Vermont

### South

- ◆ East South Central
  - Alabama
  - Kentucky
  - Mississippi
  - Tennessee
- ◆ South Atlantic
  - Delaware
  - District of Columbia
  - Florida
  - Georgia
  - Maryland
  - North Carolina
  - South Carolina
  - Virginia
  - West Virginia
- ◆ West South Central
  - Arkansas
  - Louisiana
  - Oklahoma
  - Texas

### Midwest

- ◆ East North Central
  - Illinois
  - Indiana
  - Michigan
  - Ohio
  - Wisconsin
- ◆ West North Central
  - Iowa
  - Kansas
  - Minnesota
  - Missouri
  - Nebraska
  - North Dakota
  - South Dakota

### West

- ◆ Mountain
  - Arizona
  - Colorado
  - Idaho
  - Montana
  - Nevada
  - New Mexico
  - Utah
  - Wyoming
- ◆ Pacific
  - Alaska
  - California
  - Hawaii
  - Oregon
  - Washington

Statistics used in the summary report include the following notations and descriptions:

Notation	Description
Response rate	<p>The percentage of individuals who were included in the sample minus any who were ineligible</p> $RR = \frac{(C + P)}{S - (Ret + I)}$ <p>Where</p> <ul style="list-style-type: none"> <li>RR = Response rate</li> <li>C = Number of completed surveys</li> <li>P = Number of partial surveys</li> <li>S = Sample size</li> <li>Ret = Ineligible because of retirement</li> <li>I = Ineligible for other reasons (e.g., does not work in health care, no longer in the field, on leave of absence)</li> </ul> $RR = \frac{2232}{4500 - (2 + 65)} = 50.3\%$
<i>n</i>	The number of sample members. In this report, the number of people who answered a particular question.
Mean	<p>A measure of central tendency; an average. Add all the values, and divide the total by the number of items.</p> <p>Example: <math>(1 + 1 + 7 + 34 + 88) / 5 = 26.2</math>    Mean = 26.2</p>
Standard deviation	<p>A statistic that shows the spread of scores in a distribution. Used with means. The larger the standard deviation, the more widely the scores are spread out around the mean.<sup>1</sup></p> <p>About 68% of the measurement is between 1 standard deviation greater than and 1 standard deviation smaller than the mean; 95% are plus/minus 2 standard deviations.</p> <p>Example: <math>(1 + 1 + 7 + 34 + 88)</math>                      Standard deviation = 37.1</p> <p>Therefore, 68% of the responses are between -10.9 and 63.3 in the example.</p>
Median	<p>A measure of central tendency. Arrange the values in order, from lowest to highest. Select the value in the middle position.</p> <p>Example: 1, 1, 7, 34, 88                      Median = 7</p>

