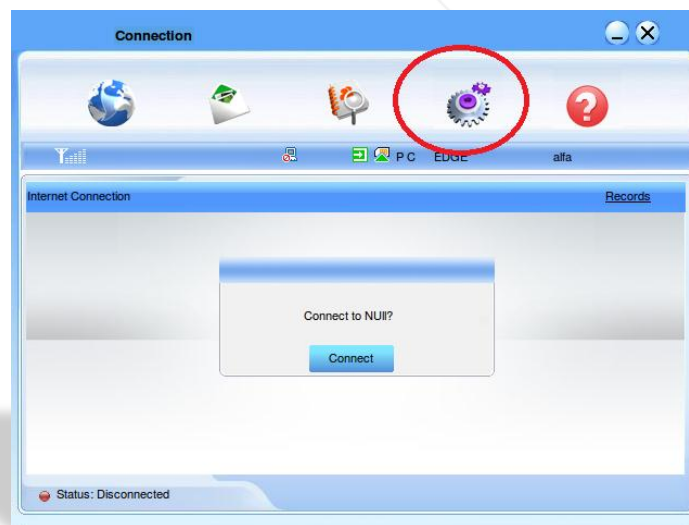


# ZTE

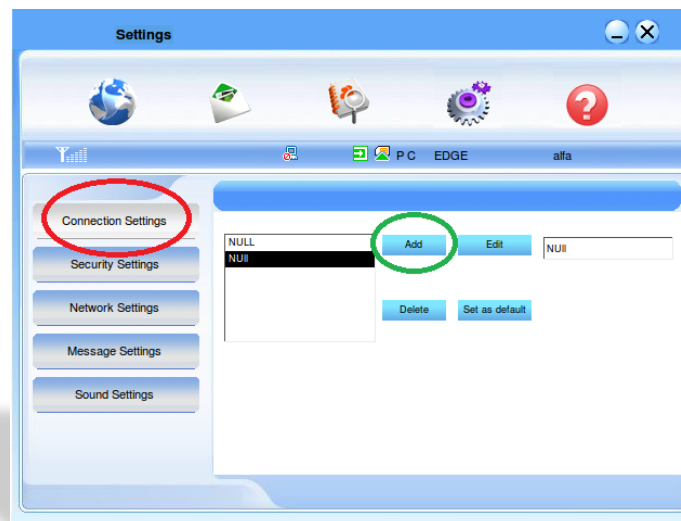
## Dongle Installation for Linux

After software installation, Click **Settings** in **Connection** window



**Settings** window

- Click **Connection Settings**
- Click **Add**





Fill the fields in the **Configuration File** window

- Configuration name: **3G**
- Dial up number: **\*99#**
- Click **Save Username and Password**
- Click **Use the following APN name**
- APN: **usb.mic1.com.lb**
- In PDP Type; click **IP**
- In Authentication; click **PAP**
- Click **Obtain DNS address automatically**
- Click **Obtain PDP address automatically**
- Click **OK**

Configuration File

Configuration name: 3G

Dial up number: \*99#

Username: mic1

Password: \*\*\*\*

Save Username and Password

Obtain APN address automatically

Use the following APN address

APN: [ ]

PDP Type

IP

PPP

Authentication

PAP

CHAP

Obtain DNS address automatically

Use the following DNS address

Preferred DNS: [ ]

Alternate DNS: [ ]

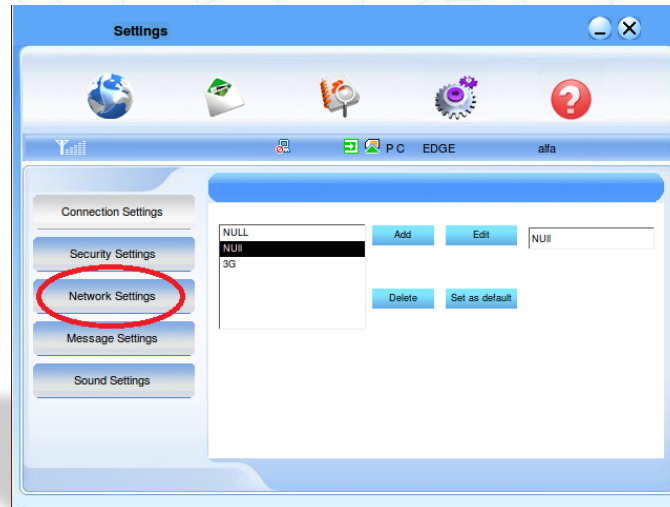
Obtain PDP address automatically

Use the following PDP address

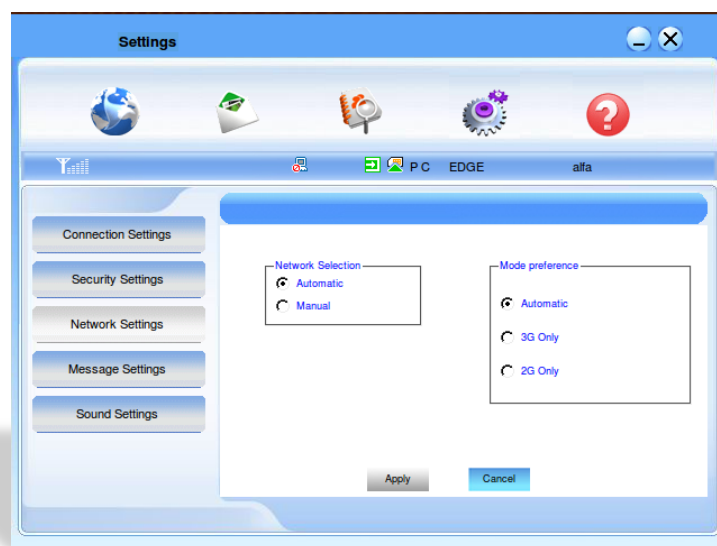
PDP: [ ]

OK Cancel

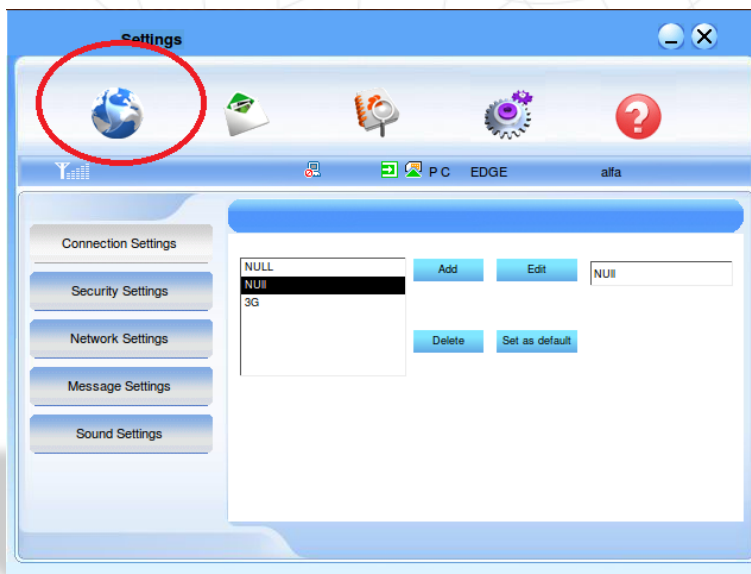
- **Settings window**
- Click **Network Settings**



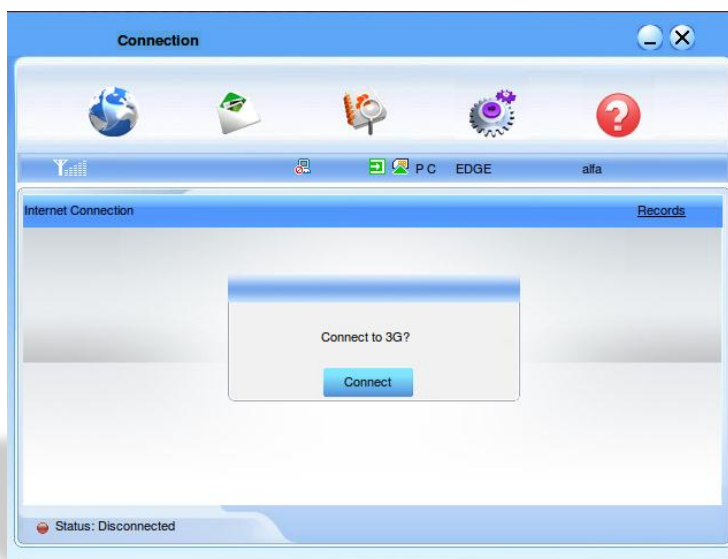
- **Settings window**
- For **Network Selection**; click **Automatic**
- For **Mode preference Selection**; click **Automatic**
- Click **Apply**



- **Settings** window
- Click the **Connection** button



- **Connection** window
- Click **Connect**



Connected

