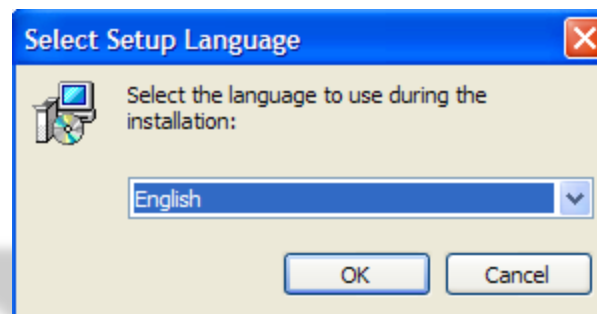




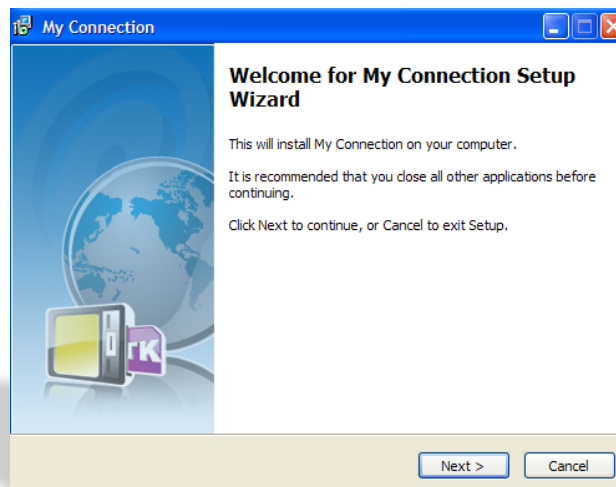
ALCATEL

Dongle Installation for Windows

- Plug the dongle, and wait for the **Installation Wizard** to start
- Select your preferred language



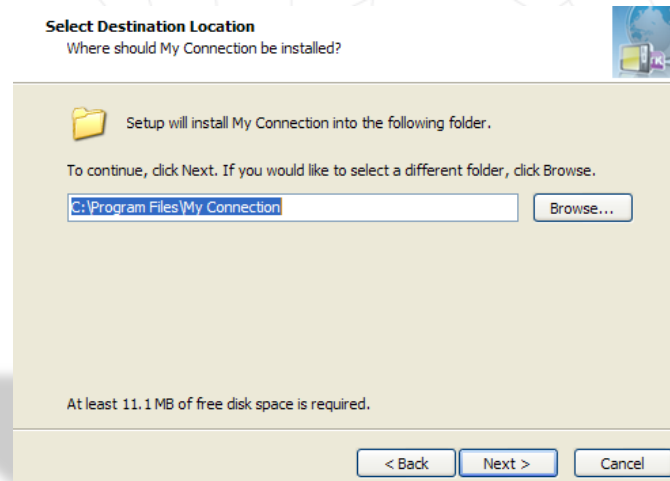
- Choose Destination Location
- Click **Next**





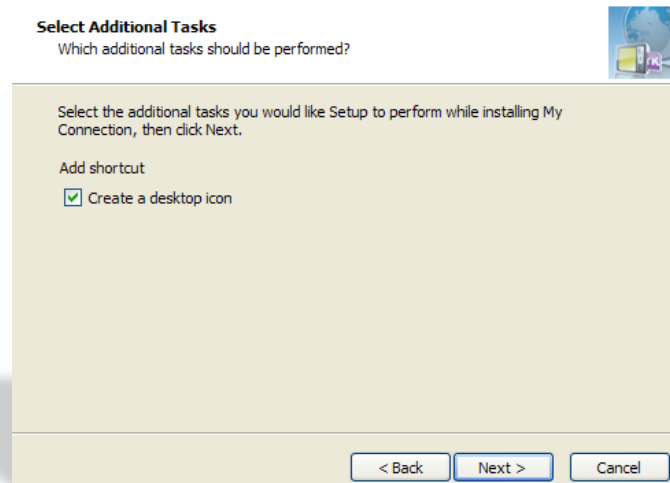
Set Destination Location window

- Click **Next**



Select Additional Tasks window

- Click **Next**



Ready to install window

- Click **Install**
- Wait for installation to finish



Ready to Install

Setup is now ready to begin installing My Connection on your computer.



Click Install to continue with the installation, or click Back if you want to review or change any settings.

Destination location:
C:\Program Files\My Connection

Additional tasks:
Add shortcut
Create a desktop icon

< Back

Install

Cancel

Installing

Please wait, My Connection setup on going.



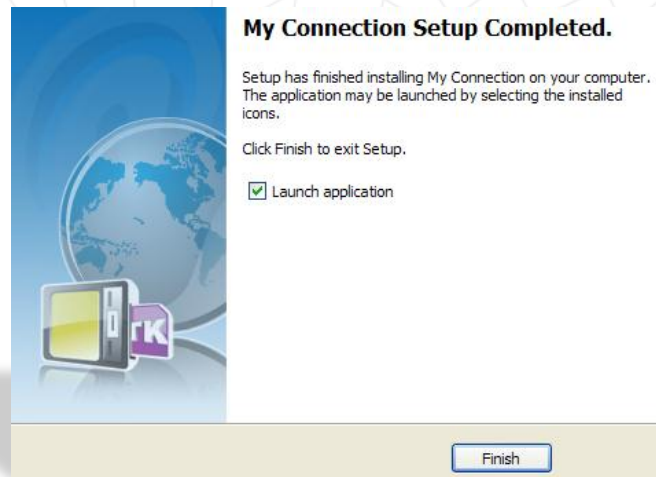
Finishing installation...



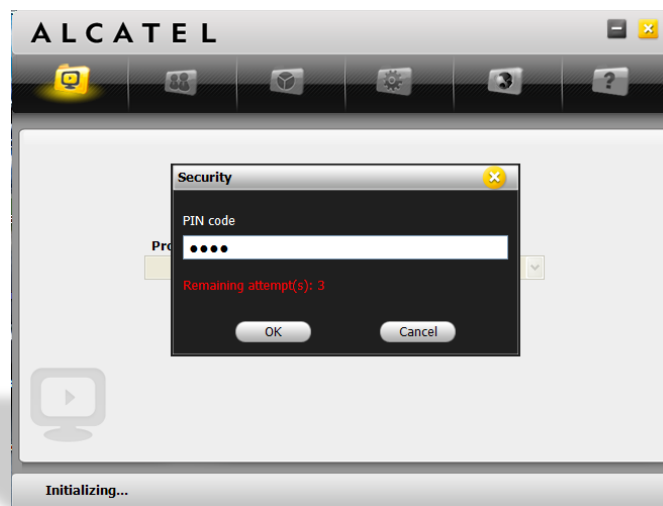
Cancel

Setup complete window

- Click **Finish** and wait for the connection manager to start

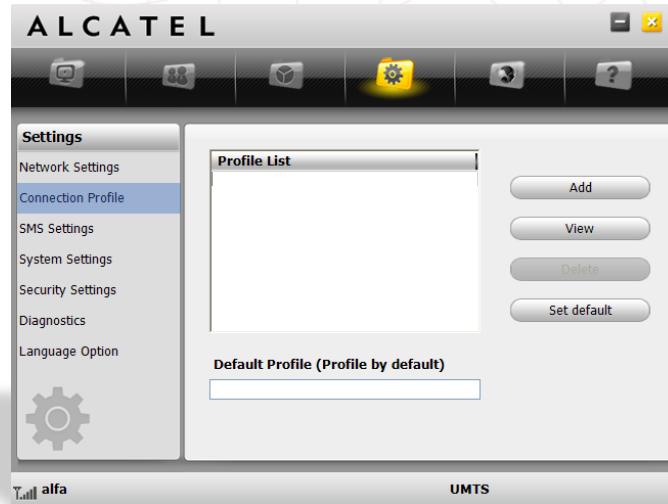


Enter the PIN code



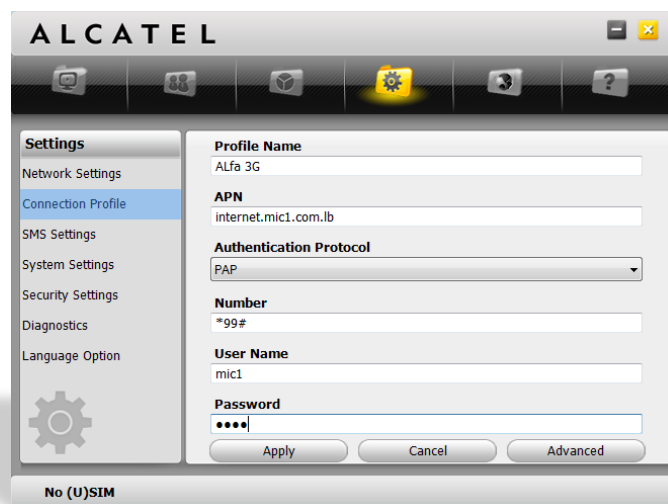
Alcatel Connection Manager

- Select **Settings**
- Select **Connection Profile**
- Click **Add**



Click **OK**

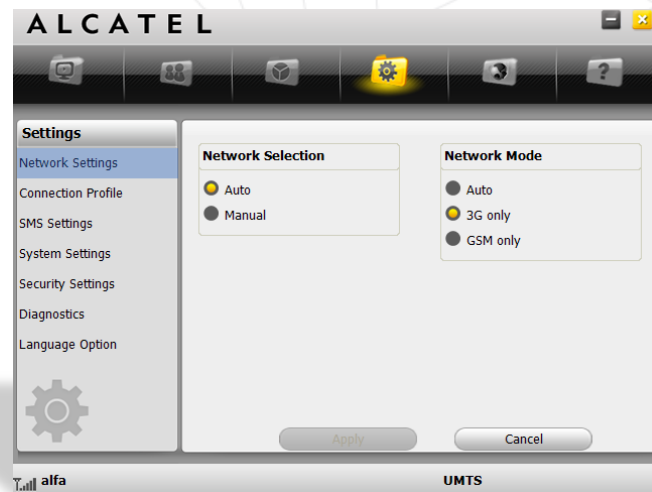
- Profile name: **Alfa 3G**
- APN: **internet.mic1.com.lb**
- Authentication Protocol: **PAP**
- Number: ***99#**
- User Name: **mic1**
- Password: **mic1**
- Click Apply and set the connection to default in the previous window





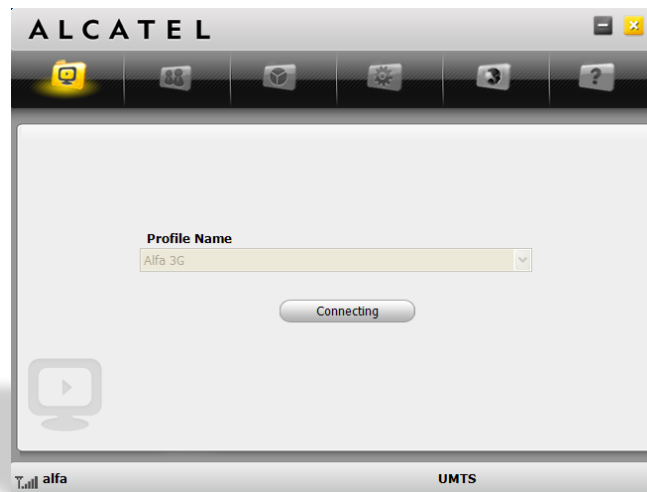
Network Settings window

- Network Selection; **choose Auto**
- Network Mode; **choose your preferred settings**
- Click **Apply**



Main Menu window

- Choose Alfa 3G and click **Connect**



Connected to the Internet

