

Enjoy a special time  
in our tranquil natural ambience.



## INFORMATION



Restaurant Saga Gyuhinkan



Foot Spa



Restaurant Rikyu



Banquet Hall (example)



ORIENTAL SPA Sabai - Sabai



SAVEURS DE SUIMEI



THE COTTON CLUB



Night Lounge Nene

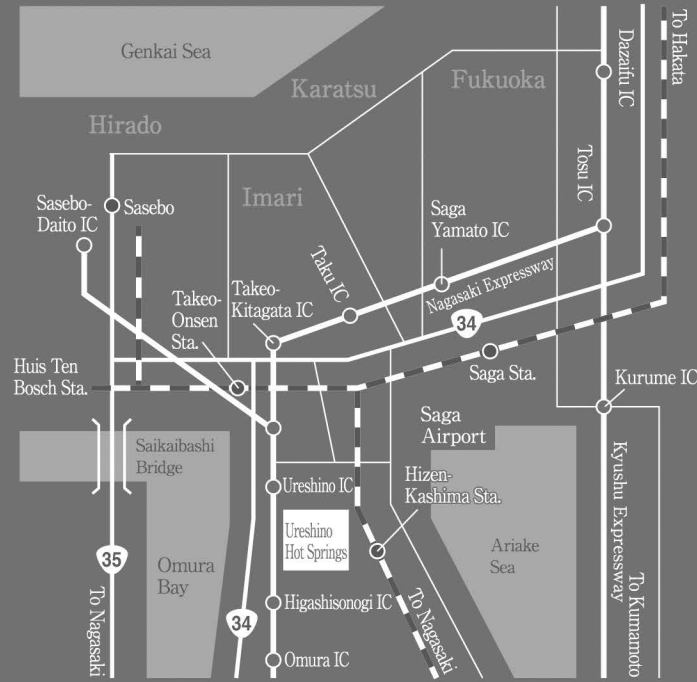


Boutique VALENZA PO



Souvenir Shop Hizenji

## ACCESS MAP



## TRANSPORTATION GUIDE

- From Fukuoka
  - By car ..... Approx. 1 hr 15 min
  - By highway bus ..... Approx. 1 hr 40 min
  - By JR train (From Hakata Sta. to Takeo Onsen Sta. + JR Bus) ..... Approx. 1 hr 40 min
- From Nagasaki
  - By car ..... Approx. 1 hr
  - By highway bus ..... Approx. 1 hr
- From Saga
  - By car ..... Approx. 1 hr
- From Fukuoka Airport
  - By car ..... Approx. 1 hr 15 min
- From Nagasaki Airport
  - By car ..... Approx. 40 min
- From Saga Airport
  - By car (By share taxi) ..... Approx. 1 hr

Wataya Besso - Ureshino Hot Springs



738 Ureshinomachi Oaza Shimojuku Otsu, Ureshino-shi, Saga, Japan 843-0301

+81-954-42-0210

FAX +81-954-42-0108

www.wataya.co.jp info@wataya.co.jp



嬉野温泉  
Wataya Besso  
Ureshino Hot Springs



# 空 間

Spaces

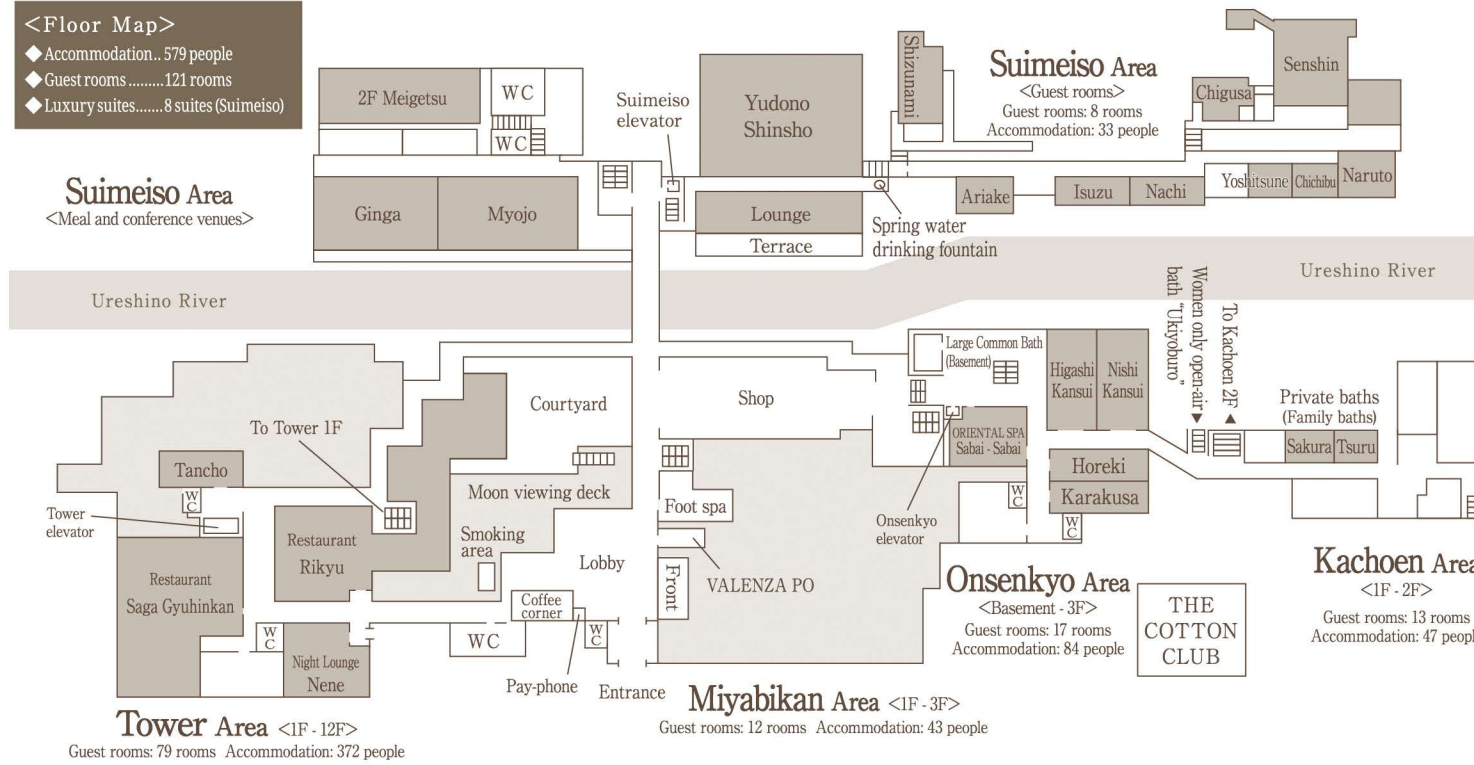


Hot spring resort resting on the bank of the Ureshino River.

With a vast space and scenery, this is the place for a vacation. Spend a special time with a loved one, or fashion fun memories with family and friends in this unusual awe-inspiring space.



<Floor Map>  
 ◆ Accommodation... 579 people  
 ◆ Guest rooms ..... 121 rooms  
 ◆ Luxury suites..... 8 suites (Suimeiso)



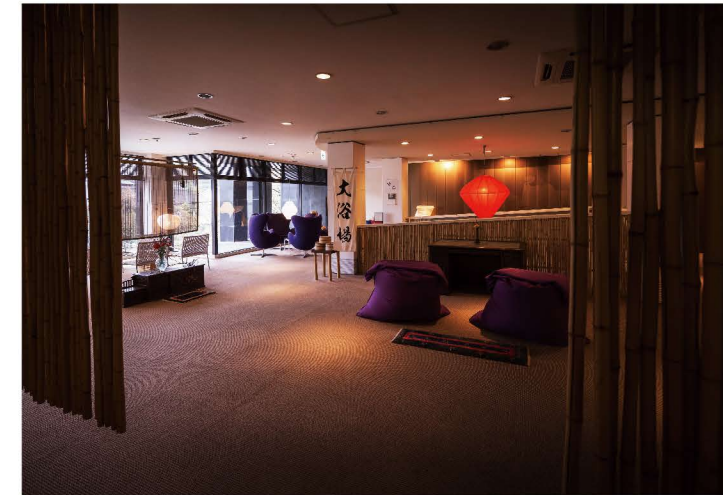
Spring quality: Natural hot spring, sodium bicarbonate  
 Chloride spring (hypotonic weak alkaline high-temperature spring), abundant hot water, spring source approx. 85°C  
 Health benefits: Rheumatism, Neuralgia, Skin disease, Anemia, Cuts, Respiratory disorder, etc.



# 温 泉

Hot Springs

Natural hot spring blessings "Beauty Skin Waters"  
 Ureshino hot spring has been selected as one of the three major skin beautification baths in Japan. Ureshino springs are the source for all baths in the hotel, from public baths to outdoor and guest room baths. Have a relaxing time in "genuine hot springs" while feeling the power of nature, springing from the earth to soothe your skin.



## Tower Area

This 12 story tower was designed by Mr. Kisho Kurokawa. Every room is a corner room. There are a variety of rooms including the Royal Suite Room furnished in the British style and designer rooms featuring a bath with a personal view.

## Onsenkyo Area

Enjoy the decor from the Taisho period on the way to your room. Each room is named after a famous hot spring and the retro entrance is reminiscent of the Taisho period.



## Kachoen Area

Enjoy a recreation of the Nagasaki highroad from the Edo period. This area features rooms with an outdoor bath and a garden where you can feel the changing of the seasons.



## Miyabikan Area

A refreshing space with scent of nature. The rooms are simply designed to refresh both mind and body while listening to the murmur of a stream and admiring the mountains.



## Suimeiso Area

Experience a space of Japanese luxury unlike any other. This place features separate Japanese rooms surrounded by greenery in the tranquil style of the tea ceremony arbor. All rooms have a private cypress bath.

# 客 室

Guest Rooms

Select a room to fit your taste. Rooms are available in a wide selection to fit each taste. Select from rooms with a view of Ureshino River below, a private outdoor bath, or even the classical Japanese elegance of the Suimeiso Area.

