

GENERAL PROFILE: ANGUILLA

GENERAL INFORMATION FOR 2023

Population
0.014 Millions

Exchange rate
..

GDP
510 Millions current US\$

Land area¹
(q) 90 km²

CPI growth
5.24 %

GDP growth
6.95 %

INTERNATIONAL MERCHANDISE TRADE

Total merchandise trade

(millions of US\$)

	2005	2010	2015	2023
Merchandise exports	15	13	11	(e) 15
Merchandise imports	130	158	204	(e) 285
Merchandise trade balance	-115	-145	-193	(e) -270

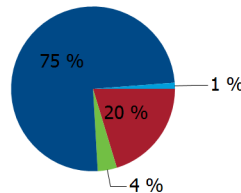
-4.5 %

Merchandise exports growth rate in 2023

Export structure by product group in 2023

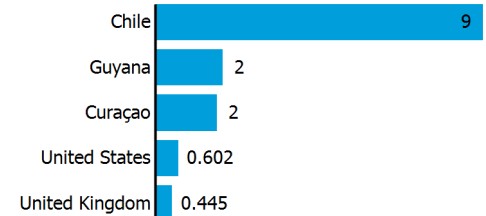
(as % of total exports)

- All food items
- Agricultural raw materials
- Manufactured goods
- Other



Top 5 partners in 2023

(exports, millions of US\$)



INTERNATIONAL TRADE IN SERVICES

Total trade in services²

(millions of US\$)

	2005	2010	2015	2023
Services exports	96	113	157	209
Services imports	49	61	81	92
Services trade balance	47	53	75	118

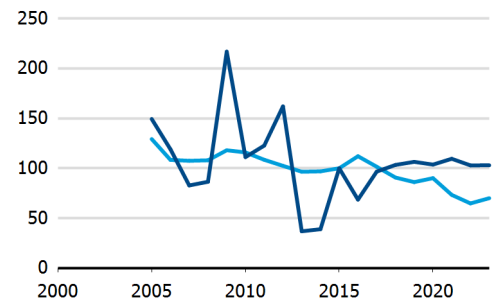
Services exports by main category²

(as % of total services)

	2005	2010	2015	2023
Transport	2.7	5.0	7.9	9.8
Travel	89.9	88.6	85.5	85.0
Other services	7.3	6.3	6.6	5.2

TRADE INDICES

- Terms of trade index
- Purchasing power index of exports



ECONOMIC TRENDS

Economic indicators

(millions of US\$ unless otherwise specified)

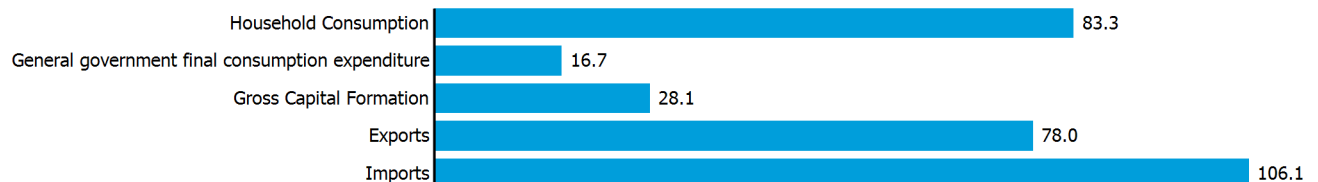
	2005	2010	2015	2023
GDP, current	229	268	331	510
GDP per capita, current US\$	18 668	20 062	23 261	35 374
Real GDP growth, y-on-y, %	13.11	-4.62	3.66	6.95
Current account balance, % of GDP	-27.12	-25.65	-30.01	-14.71
Exchange rate (/US\$)	2.700	2.700	2.700	..

+7.0 %

Gross domestic product growth rate in 2023

GDP by expenditure in 2022

(as % of total GDP)



ANGUILLA

FDI AND EXTERNAL FINANCIAL RESOURCES

Financial flows

(millions of US\$ unless otherwise specified)

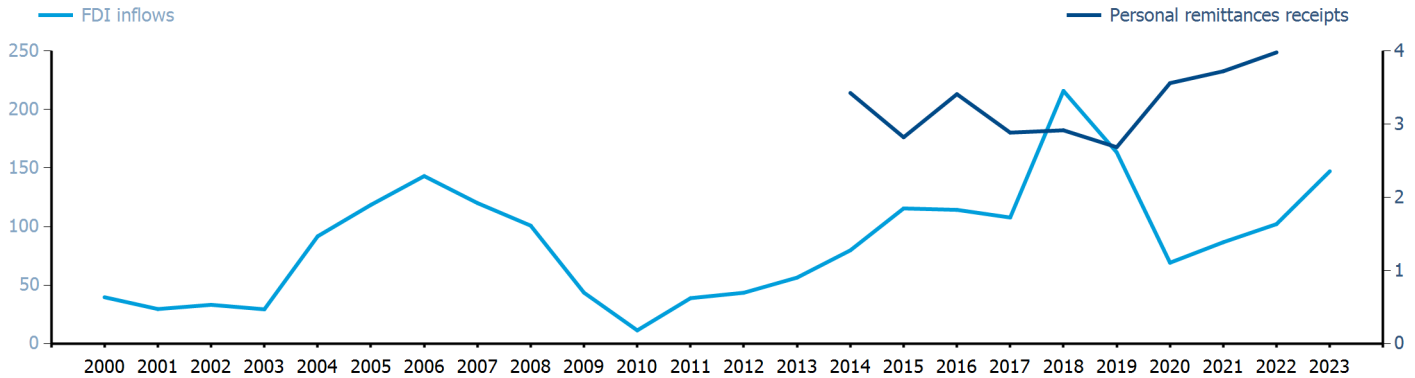
	2005	2010	2015	2023
FDI inflows	118.58	11.41	(k) 115.56	(k) 147.28
FDI outflows	(k) 30.72	(k) 4.63
Personal remittances, % of GDP	0.85	..

+0.9 %

FDI outflows as % of GDP in 2023

Financial flows trends

(millions of US\$)



TRADE IN GOODS AND SERVICES

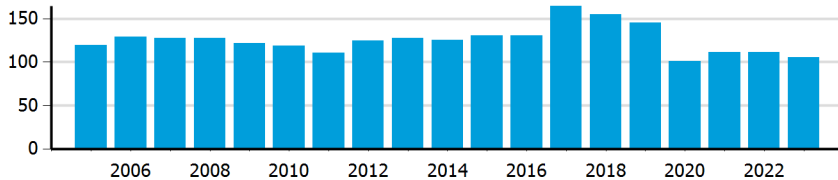
Trade balance indicators²

(as % and index)

	2005	2010	2015	2023
Balance, % of GDP	-22.97	-24.87	-27.07	-15.73
Balance, % of imports	-32.23	-34.59	-34.28	-25.98
Normalized balance	-0.192	-0.209	-0.207	-0.149

Trade openness²

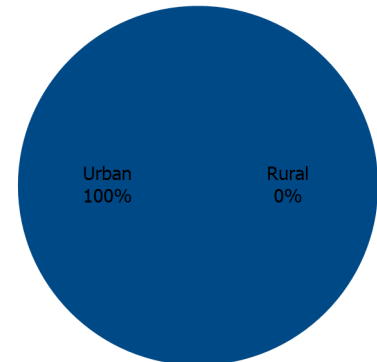
(sum of imports and exports as % of GDP)



LIVING AREA

Population by living area in 2023

(% of population)



OTHER INDICATORS

Maritime transport indicators

	2005	2010	2015	2023
Merchant fleet, national flag (thousands of DWT)	1	1	0	0
Container port throughput (TEU)

0 %

Share of the total world merchant fleet in 2023

Information economy indicators

(as % of)

	2005	2010	2015	2023
Share of ICT goods, % of total exports
Share of ICT goods, % of total imports
Share of workforce involved in the ICT sector

ANGUILLA

Source: UN Trade and Development, UNCTADstat (<https://unctadstat.unctad.org/datacentre>)

Notes:

- 1 Land area refers to the total area of a country excluding area under inland water bodies. It differs from the country area, that includes area under inland water bodies, but excludes offshore territorial waters.
- 2 Statistics presented correspond to the 6th edition of the IMF Balance of Payments and International Investment Position Manual (BPM6, 2009).
- e Estimated.
- k Asset/liability basis.
- q Estimated. Data refers to 2020.

Symbols for missing values:

- 0 Zero means that the amount is nil or negligible
- .. No value reported or collected
- Not applicable
- ... Not available, including no quotation
- # Non-relevant calculation
- Not publishable
- *** Negative accumulation of flows; Value included in regional and global totals

Abbreviations & acronyms:

- DWT: Dead weight tons
- FDI: Foreign direct investment
- GDP: Gross domestic product
- ICT: Information and communication technology
- TEU: Twenty foot equivalent unit
- US\$: United States dollar

Disclaimer:

The designations employed and the presentation of the material on the UNCTAD Data Hub do not imply the expression of any opinion whatsoever on the part of the secretariat of the United Nations concerning the legal status of any country, territory, city or area, or of its authorities, or concerning the delimitation of its frontiers or boundaries.

Where the designations "economy" or "country or area" appear in texts or tables, they cover regions, countries, territories, cities or areas.

UNCTAD strives for the highest level of accuracy and is committed to promptly correcting any errors on its part. It does not guarantee or make any express or implied representations regarding the accuracy, reliability, correctness, fitness for use for a particular purpose, or otherwise, whatsoever, of any of the tables in the UNCTAD Data Hub.

Generation date: 11 October 2024