

**NYC Department of Education
Building Condition Assessment Survey 2023-2024**

Electrical Inspection

X149

Asset: J.H.S. 149 - BRONX, 360 EAST 145 STREET, BRONX, NY, 10454

Inspection Id	Inspection Type	Time In	Last Edited
1386	ELECTRICAL	2023-12-01 07:47AM	2023-12-18 03:58PM

Asset Data

Question	Answer
Have any Systems/Major Building Components been upgraded?	<p>Systems: Partial Molded Case Circuit Breaker Panel Boards</p> <p>Years: 2023, 2012, 1999</p> <p>Systems: Gymnasium, Science Lab - Room 305 (Projection System), LAN</p> <p>Years: 2020</p> <p>Systems: Students Bathrooms - Rooms 311, 313 (Surface LED Lighting)</p> <p>Years: 2019</p> <p>Systems: Emergency Lighting (Battery Pack)</p> <p>Years: 2018</p> <p>Systems: Partial Exit Lights (Battery Pack), Telephone System, Most Emergency Lighting (Non Battery Pack), Variable Frequency Drive</p> <p>Years: 2016</p> <p>Systems: IPDVS/CCTV System, Interior Lighting - Except (Gymnasium, Library, 3rd Floor Classrooms and Offices, Computer Lab - Room 300, Science Lab Rooms: 305, 309; Science Prep Room 307; Science Lab Room 205 - Incandescent Lighting), Science Lab - Rooms: 322, 323; Science Prep Room - 324.</p> <p>Years: 2015</p> <p>Systems: Most Security Lights</p> <p>Years: 2013, 1994</p> <p>Systems: Library</p> <p>Years: 2013</p> <p>Systems: Auditorium (Local Sound System, Theater Lighting System, Projection System)</p> <p>Years: 2012</p> <p>Systems: 3rd Floor Classrooms and Offices (Lighting), Computer Lab - Room 300, Science Lab - Rooms: 305, 309; Science Prep Room 307, Science Lab - Room 205 (Incandescent Lighting)</p> <p>Years: 2007</p> <p>Systems: Public Address System, Local Sound System (Cafeteria), Emergency Light/Exit Light Panel</p> <p>Years: 2001</p> <p>Systems: Intrusion Alarm System</p> <p>Years: 1999</p> <p>Type of Service Does Interactive Whiteboard (IWB) Exist? Water Penetration In Electrical Room?</p> <p>Below Ground Yes Yes</p>

DEDICATED INTERCOMS IN FIRE RESCUE AREAS

Question	Response
Are there any Life Rescue Assistance Areas, Fire Rescue Areas, and/or Holding Rooms in your building?	No

Priority Condition

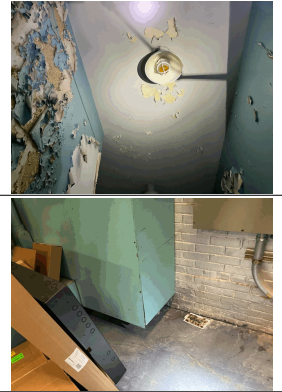
Exist Last Year?	Priority Category	Condition Description	Component Affected	Location Description	Person(s) Notified	Person(s) Title	Photo Image
------------------	-------------------	-----------------------	--------------------	----------------------	--------------------	-----------------	-------------

**NYC Department of Education
Building Condition Assessment Survey 2023-2024**

Electrical Inspection

X149

No	Water Leaks onto Electrical Equipment	Water penetrates from a broken steam pipe.	Lighting Fixture	Basement - Room C16	Hector Franqui	Fireman
Yes	Water Penetration in Electrical Room	Water penetrates through CT cabinet when it rains.	Electrical Equipment	Electrical Room	Hector Frsnqui	Fireman



Inspection

Question	Response
Electrical	
ATHLETIC FIELD	Does not exist
AUDITORIUM	Inspected
Instance on 1st Floor	Inspected
House Lighting	
Instance on 1st Floor	Inspected
Does a Chandelier Exist?	No
Lighting Fixture - Fluorescent	
Instance on 1st Floor	Inspected
Pendant Mounted	
Instance on 1st Floor	Does not exist
Surface Mounted	
Instance on 1st Floor	Inspected
Instance Condition	2- Between Good and Fair
Deficiency	No deficiencies recorded
Recessed Mounted	
Instance on 1st Floor	Does not exist
Lighting Fixture - HID	
Instance on 1st Floor	Does not exist
Lighting Fixture - Incandescent	
Instance on 1st Floor	Does not exist
Lighting Fixture - LED	
Instance on 1st Floor	Inspected
Pendant Mounted	
Instance on 1st Floor	Does not exist
Surface Mounted	
Instance on 1st Floor	Does not exist
Recessed Mounted	
Instance on 1st Floor	Inspected
Instance Condition	2- Between Good and Fair
Deficiency	LIGHTING FIXTURE NOT OPERATIONAL
Deficiency Quantity	1
Quantity Uom	EACH
Potential Action	REPLACE
Urgency of Action	PRIORITY 3
Purpose of Action	LEVEL 2
Violations	No violations recorded
Local Sound System	
Instance on 1st Floor	Inspected
Instance Condition	3- Fair
Installation Year	2012

NYC Department of Education
Building Condition Assessment Survey 2023-2024

Electrical Inspection

X149

Question	Response
AUDITORIUM	
Local Sound System	
Source of Installation Year	Documented
Deficiency	No deficiencies recorded
Projection System	
Instance on 1st Floor	Inspected
Instance Condition	4- Between Fair and Poor
Is the projector on a cart or installed on the ceiling?	Ceiling
Deficiency	VIDEO PROJECTOR IS NOT OPERATIONAL
Deficiency Quantity	1
Quantity Uom	EACH
Potential Action	REPAIR
Urgency of Action	PRIORITY 3
Purpose of Action	LEVEL 2
Violations	No violations recorded
Theater Lighting System	
Instance on 1st Floor	Inspected
Dimming System	
Instance on 1st Floor	Inspected
Instance Condition	4- Between Fair and Poor
Deficiency	DIMMING RACK/LIGHT CONSOLE NOT OPERATIONAL
Deficiency Quantity	1
Quantity Uom	EACH
Potential Action	REPAIR
Urgency of Action	PRIORITY 3
Purpose of Action	LEVEL 2
Violations	No violations recorded
Theater Lighting	
Instance on 1st Floor	Inspected
Instance Condition	2- Between Good and Fair
Deficiency	No deficiencies recorded
CAFETERIA	
Instance on Basement	Inspected
Lighting	
Instance on Basement	Inspected
Lighting Fixture - Fluorescent	
Instance on Basement	Inspected
Pendant Mounted	
Instance on Basement	Does not exist
Surface Mounted	
Instance on Basement	Does not exist
Recessed Mounted	
Instance on Basement	Inspected
Instance Condition	2- Between Good and Fair
Deficiency	LIGHTING FIXTURE BALLAST DEFECTIVE
Deficiency Quantity	1
Quantity Uom	EACH
Potential Action	REPLACE BALLAST
Urgency of Action	PRIORITY 3
Purpose of Action	LEVEL 2
Violations	No violations recorded
Lighting Fixture - HID	
Instance on Basement	Does not exist
Lighting Fixture - Incandescent	
Instance on Basement	Does not exist

**NYC Department of Education
Building Condition Assessment Survey 2023-2024**

Electrical Inspection

X149

Question	Response
CAFETERIA	
Lighting	
Lighting Fixture - LED	
Instance on Basement	Does not exist
Local Sound System	
Instance on Basement	Inspected
Instance Condition	3- Fair
Installation Year	2001
Source of Installation Year	Documented
Deficiency	BEYOND USEFUL LIFE
Deficiency Location/Instance	Cafeteria-Basement
Deficiency Quantity	1
Quantity Uom	EACH
Potential Action	REPLACE
Urgency of Action	PRIORITY 1
Purpose of Action	LEVEL 2
Violations	No violations recorded
Projection System	
Instance on Basement	Does not exist
Theater Lighting System	
Instance on Basement	Does not exist
CLASSROOM/CORRIDOR/ADMINISTRATIVE SPACE	
	Inspected
Lighting	
Does a Chandelier Exist?	No
Lighting Fixture - Fluorescent	
Pendant Mounted	
Condition	2- Between Good and Fair
Deficiency	No deficiencies recorded
Surface Mounted	
Condition	2- Between Good and Fair
Deficiency	No deficiencies recorded
Recessed Mounted	
Condition	2- Between Good and Fair
Deficiency	No deficiencies recorded
Lighting Fixture - HID	
	Does not exist
Lighting Fixture - Incandescent	
	Does not exist
Lighting Fixture - LED	
	Does not exist
COMPUTER LAB	
	Inspected
Instance on Room 300	Inspected
Power Panel?	Yes
Lighting	
Instance on Room 300	Inspected
Lighting Fixture - Fluorescent	
Instance on Room 300	Inspected
Pendant Mounted	
Instance on Room 300	Does not exist
Surface Mounted	
Instance on Room 300	Inspected
Instance Condition	3- Fair
Deficiency	No deficiencies recorded
Recessed Mounted	
Instance on Room 300	Does not exist
Lighting Fixture - HID	
Instance on Room 300	Does not exist

**NYC Department of Education
Building Condition Assessment Survey 2023-2024**

Electrical Inspection

X149

Question	Response
COMPUTER LAB	
Lighting	
Lighting Fixture - Incandescent	
Instance on Room 300	Does not exist
Lighting Fixture - LED	
Instance on Room 300	Does not exist
Raceway With Receptacles	
Instance on Room 300	Inspected
Instance Condition	3- Fair
Deficiency	No deficiencies recorded
GYMNASIUM	
Instance on 1st Floor	Inspected
Lighting	
Instance on 1st Floor	Inspected
Lighting Fixture - Fluorescent	
Instance on 1st Floor	Does not exist
Lighting Fixture - HID	
Instance on 1st Floor	Does not exist
Lighting Fixture - Incandescent	
Instance on 1st Floor	Does not exist
Lighting Fixture - LED	
Instance on 1st Floor	Inspected
Pendant Mounted	
Instance on 1st Floor	Does not exist
Surface Mounted	
Instance on 1st Floor	Does not exist
Recessed Mounted	
Instance on 1st Floor	Inspected
Instance Condition	1- Good
Deficiency	No deficiencies recorded
Local Sound System	
Instance on 1st Floor	Inspected
Instance Condition	2- Between Good and Fair
Installation Year	2020
Source of Installation Year	Documented
Deficiency	No deficiencies recorded
Projection System	
Instance on 1st Floor	Does not exist
Scoreboard	
Instance on 1st Floor	Inspected
Instance Condition	1- Good
Deficiency	No deficiencies recorded
Theater Lighting System	
Instance on 1st Floor	Does not exist
KITCHEN	
Instance on Basement	Inspected
Lighting	
Instance on Basement	Inspected
Lighting Fixture - Fluorescent	
Instance on Basement	Inspected
Pendant Mounted	
Instance on Basement	Does not exist
Surface Mounted	
Instance on Basement	Inspected

**NYC Department of Education
Building Condition Assessment Survey 2023-2024**

Electrical Inspection

X149

Question	Response
KITCHEN	
Lighting	
Lighting Fixture - Fluorescent	
Surface Mounted	
Instance Condition	2- Between Good and Fair
Deficiency	No deficiencies recorded
Recessed Mounted	
Instance on Basement	Inspected
Instance Condition	2- Between Good and Fair
Deficiency	No deficiencies recorded
Lighting Fixture - HID	
Instance on Basement	Does not exist
Lighting Fixture - Incandescent	
Instance on Basement	Does not exist
Lighting Fixture - LED	
Instance on Basement	Does not exist
LIBRARY	
Instance on 2nd Floor	Inspected
Lighting	
Instance on 2nd Floor	Inspected
Lighting Fixture - Fluorescent	
Instance on 2nd Floor	Inspected
Pendant Mounted	
Instance on 2nd Floor	Does not exist
Surface Mounted	
Instance on 2nd Floor	Inspected
Instance Condition	2- Between Good and Fair
Deficiency	LIGHTING FIXTURE BALLAST DEFECTIVE
Deficiency Quantity	1
Quantity Uom	EACH
Potential Action	REPLACE BALLAST
Urgency of Action	PRIORITY 3
Purpose of Action	LEVEL 2
Violations	No violations recorded
Recessed Mounted	
Instance on 2nd Floor	Does not exist
Lighting Fixture - HID	
Instance on 2nd Floor	Does not exist
Lighting Fixture - Incandescent	
Instance on 2nd Floor	Does not exist
Lighting Fixture - LED	
Instance on 2nd Floor	Inspected
Pendant Mounted	
Instance on 2nd Floor	Does not exist
Surface Mounted	
Instance on 2nd Floor	Inspected
Instance Condition	2- Between Good and Fair
Deficiency	No deficiencies recorded
Recessed Mounted	
Instance on 2nd Floor	Inspected
Instance Condition	2- Between Good and Fair
Deficiency	LIGHTING FIXTURE NOT OPERATIONAL
Deficiency Quantity	1
Quantity Uom	EACH

NYC Department of Education
Building Condition Assessment Survey 2023-2024

Electrical Inspection

X149

Question	Response
LIBRARY	
Lighting	
Lighting Fixture - LED	
Recessed Mounted	
Potential Action	REPLACE
Urgency of Action	PRIORITY 3
Purpose of Action	LEVEL 2
Violations	No violations recorded
Raceway With Receptacles	
Instance on 2nd Floor	Inspected
Instance Condition	2- Between Good and Fair
Deficiency	No deficiencies recorded
Projection System	
Instance on 2nd Floor	Does not exist
LOCKER ROOM	
	Inspected
Instance on Basement - Boys, Basement - Girls	Inspected
Alternative Use	Yes
Lighting	
Instance on Basement - Boys, Basement - Girls	Inspected
Lighting Fixture - Fluorescent	
Instance on Basement - Boys, Basement - Girls	Inspected
Pendant Mounted	
Instance on Basement - Boys, Basement - Girls	Does not exist
Surface Mounted	
Instance on Basement - Boys, Basement - Girls	Inspected
Instance Condition	2- Between Good and Fair
Deficiency	LIGHTING FIXTURE BALLAST DEFECTIVE
Deficiency Quantity	6
Quantity Uom	EACH
Potential Action	REPLACE BALLAST
Urgency of Action	PRIORITY 3
Purpose of Action	LEVEL 2
Violations	No violations recorded
Recessed Mounted	
Instance on Basement - Boys, Basement - Girls	Does not exist
Lighting Fixture - HID	
Instance on Basement - Boys, Basement - Girls	Does not exist
Lighting Fixture - Incandescent	
Instance on Basement - Boys, Basement - Girls	Does not exist
Lighting Fixture - LED	
Instance on Basement - Boys, Basement - Girls	Does not exist
MULTIPURPOSE ROOM	
	Does not exist
SCIENCE DEMO ROOM	
	Does not exist
SCIENCE LAB	
	Inspected
Instance on Room 205	Inspected
Power Panel?	No
Alternative Use	No
Instance on Room 305	Inspected
Power Panel?	Yes
Alternative Use	No
Instance on Room 309	Inspected
Power Panel?	No
Alternative Use	No
Instance on Room 322	Inspected

**NYC Department of Education
Building Condition Assessment Survey 2023-2024**

Electrical Inspection

X149

Question	Response
SCIENCE LAB	
Power Panel?	No
Alternative Use	No
Instance on Room 323	Inspected
Power Panel?	Yes
Alternative Use	No
Lighting	
Instance on Room 205	Inspected
Instance on Room 305	Inspected
Instance on Room 309	Inspected
Instance on Room 322	Inspected
Instance on Room 323	Inspected
Lighting Fixture - Fluorescent	
Instance on Room 205	Inspected
Instance on Room 305	Inspected
Instance on Room 309	Inspected
Instance on Room 322	Inspected
Instance on Room 323	Inspected
Pendant Mounted	
Instance on Room 205	Does not exist
Instance on Room 305	Inspected
Instance Condition	3- Fair
Deficiency	No deficiencies recorded
Instance on Room 309	Inspected
Instance Condition	3- Fair
Deficiency	No deficiencies recorded
Instance on Room 322	Inspected
Instance Condition	2- Between Good and Fair
Deficiency	No deficiencies recorded
Instance on Room 323	Inspected
Instance Condition	2- Between Good and Fair
Deficiency	No deficiencies recorded
Surface Mounted	
Instance on Room 205	Inspected
Instance Condition	2- Between Good and Fair
Deficiency	No deficiencies recorded
Instance on Room 305	Does not exist
Instance on Room 309	Does not exist
Instance on Room 322	Does not exist
Instance on Room 323	Inspected
Instance Condition	2- Between Good and Fair
Deficiency	No deficiencies recorded
Recessed Mounted	
Instance on Room 205	Does not exist
Instance on Room 305	Does not exist
Instance on Room 309	Does not exist
Instance on Room 322	Does not exist
Instance on Room 323	Does not exist
Lighting Fixture - HID	
Instance on Room 205	Does not exist
Instance on Room 305	Does not exist
Instance on Room 309	Does not exist
Instance on Room 322	Does not exist

**NYC Department of Education
Building Condition Assessment Survey 2023-2024**

Electrical Inspection

X149

Question	Response
SCIENCE LAB	
Lighting	
Lighting Fixture - HID	
Instance on Room 323	Does not exist
Lighting Fixture - Incandescent	
Instance on Room 205	Inspected
Instance on Room 305	Does not exist
Instance on Room 309	Does not exist
Instance on Room 322	Inspected
Instance on Room 323	Inspected
Pendant Mounted	
Instance on Room 205	Does not exist
Instance on Room 322	Does not exist
Instance on Room 323	Does not exist
Surface Mounted	
Instance on Room 205	Inspected
Instance Condition	3- Fair
Deficiency	No deficiencies recorded
Instance on Room 322	Inspected
Instance Condition	2- Between Good and Fair
Deficiency	No deficiencies recorded
Instance on Room 323	Inspected
Instance Condition	2- Between Good and Fair
Deficiency	No deficiencies recorded
Recessed Mounted	
Instance on Room 205	Does not exist
Instance on Room 322	Does not exist
Instance on Room 323	Does not exist
Lighting Fixture - LED	
Instance on Room 205	Does not exist
Instance on Room 305	Does not exist
Instance on Room 309	Does not exist
Instance on Room 322	Does not exist
Instance on Room 323	Does not exist
Emergency Gas Shut-Off Valve	
Instance on Room 205	Inspected
Instance Condition	3- Fair
Deficiency	No deficiencies recorded
Instance on Room 305	Inspected
Instance Condition	3- Fair
Deficiency	No deficiencies recorded
Instance on Room 309	Inspected
Instance Condition	3- Fair
Deficiency	No deficiencies recorded
Instance on Room 322	Inspected
Instance Condition	2- Between Good and Fair
Deficiency	No deficiencies recorded
Instance on Room 323	Inspected
Instance Condition	2- Between Good and Fair
Deficiency	No deficiencies recorded
Emergency Shut-Off Power	
Instance on Room 205	Inspected
Instance Condition	3- Fair

**NYC Department of Education
Building Condition Assessment Survey 2023-2024**

Electrical Inspection

X149

Question	Response
SCIENCE LAB	
Emergency Shut-Off Power	
Deficiency	No deficiencies recorded
Instance on Room 305	Does not exist
Instance on Room 309	Does not exist
Instance on Room 322	Inspected
Instance Condition	2- Between Good and Fair
Deficiency	No deficiencies recorded
Instance on Room 323	Inspected
Instance Condition	2- Between Good and Fair
Deficiency	No deficiencies recorded
Power Supply	
Instance on Room 205	Inspected
Instance on Room 305	Does not exist
Instance on Room 309	Does not exist
Instance on Room 322	Does not exist
Instance on Room 323	Inspected
Instructor Unit	
Instance on Room 205	Inspected
Instance Condition	3- Fair
Deficiency	No deficiencies recorded
Instance on Room 323	Inspected
Instance Condition	2- Between Good and Fair
Deficiency	No deficiencies recorded
Meter Demonstration Unit	
Instance on Room 205	Inspected
Instance Condition	3- Fair
Deficiency	No deficiencies recorded
Instance on Room 323	Inspected
Instance Condition	2- Between Good and Fair
Deficiency	No deficiencies recorded
Student Unit	
Instance on Room 205	Does not exist
Instance on Room 323	Does not exist
Projection System	
Instance on Room 205	Does not exist
Instance on Room 305	Inspected
Instance Condition	1- Good
Deficiency	No deficiencies recorded
Instance on Room 309	Does not exist
Instance on Room 322	Does not exist
Instance on Room 323	Does not exist
SCIENCE PREP ROOM	
Instance on Room 205A	Inspected
Power Panel?	No
Alternative Use	No
Instance on Room 307	Inspected
Power Panel?	No
Alternative Use	Yes
Instance on Room 324	Inspected
Power Panel?	No
Alternative Use	No
Lighting	

**NYC Department of Education
Building Condition Assessment Survey 2023-2024**

Electrical Inspection

X149

Question	Response
SCIENCE PREP ROOM	
Lighting	
Instance on Room 205A	Inspected
Instance on Room 307	Inspected
Instance on Room 324	Inspected
Lighting Fixture - Fluorescent	
Instance on Room 205A	Inspected
Instance on Room 307	Inspected
Instance on Room 324	Inspected
Pendant Mounted	
Instance on Room 205A	Does not exist
Instance on Room 307	Inspected
Instance Condition	3- Fair
Deficiency	No deficiencies recorded
Instance on Room 324	Inspected
Instance Condition	2- Between Good and Fair
Deficiency	No deficiencies recorded
Surface Mounted	
Instance on Room 205A	Inspected
Instance Condition	2- Between Good and Fair
Deficiency	No deficiencies recorded
Instance on Room 307	Does not exist
Instance on Room 324	Does not exist
Recessed Mounted	
Instance on Room 205A	Does not exist
Instance on Room 307	Does not exist
Instance on Room 324	Does not exist
Lighting Fixture - HID	
Instance on Room 205A	Does not exist
Instance on Room 307	Does not exist
Instance on Room 324	Does not exist
Lighting Fixture - Incandescent	
Instance on Room 205A	Does not exist
Instance on Room 307	Does not exist
Instance on Room 324	Does not exist
Lighting Fixture - LED	
Instance on Room 205A	Does not exist
Instance on Room 307	Does not exist
Instance on Room 324	Does not exist
Emergency Gas Shut-Off Valve	
Instance on Room 205A	Inspected
Instance Condition	3- Fair
Deficiency	No deficiencies recorded
Instance on Room 307	Inspected
Instance Condition	3- Fair
Deficiency	No deficiencies recorded
Instance on Room 324	Inspected
Instance Condition	2- Between Good and Fair
Deficiency	No deficiencies recorded
Emergency Shut-Off Power	
Instance on Room 205A	Inspected
Instance Condition	3- Fair
Deficiency	No deficiencies recorded

**NYC Department of Education
Building Condition Assessment Survey 2023-2024**

Electrical Inspection

X149

Question	Response
SCIENCE PREP ROOM	
Emergency Shut-Off Power	
Instance on Room 307	Inspected
Instance Condition	3- Fair
Deficiency	No deficiencies recorded
Instance on Room 324	Inspected
Instance Condition	2- Between Good and Fair
Deficiency	No deficiencies recorded
Power Supply	
Instance on Room 205A	Does not exist
Instance on Room 307	Does not exist
Instance on Room 324	Does not exist
SWIMMING POOL	Does not exist
TOILET ROOM - STAFF	Inspected
Lighting	Inspected
Lighting Fixture - Fluorescent	Inspected
Pendant Mounted	Does not exist
Surface Mounted	Inspected
Condition	2- Between Good and Fair
Deficiency	No deficiencies recorded
Recessed Mounted	Does not exist
Lighting Fixture - HID	Does not exist
Lighting Fixture - Incandescent	Does not exist
Lighting Fixture - LED	Does not exist
TOILET ROOM - STUDENT	Inspected
Lighting	Inspected
Lighting Fixture - Fluorescent	Inspected
Pendant Mounted	Does not exist
Surface Mounted	Inspected
Condition	2- Between Good and Fair
Deficiency	No deficiencies recorded
Recessed Mounted	Does not exist
Lighting Fixture - HID	Does not exist
Lighting Fixture - Incandescent	Does not exist
Lighting Fixture - LED	Inspected
Pendant Mounted	Does not exist
Surface Mounted	Inspected
Condition	1- Good
Deficiency	No deficiencies recorded
Recessed Mounted	Does not exist
AUXILIARY SIGNAL/BELL SYSTEM	Inspected
Condition	3- Fair
Deficiency	No deficiencies recorded
EMERGENCY DC STANDBY BATTERY POWER	Does not exist
EMERGENCY GENERATOR SET	Does not exist
EMERGENCY LIGHT/EXIT LIGHT PANEL	Inspected
Condition	3- Fair
Deficiency	No deficiencies recorded
EMERGENCY LIGHTING	Inspected
Battery Pack	Inspected
Condition	1- Good
Deficiency	No deficiencies recorded
Non Battery Pack	Inspected

**NYC Department of Education
Building Condition Assessment Survey 2023-2024**

Electrical Inspection

X149

Question	Response
EMERGENCY LIGHTING	
Non Battery Pack	
Condition	2- Between Good and Fair
Deficiency	No deficiencies recorded
EXIT LIGHT	Inspected
Battery Pack	Inspected
Condition	2- Between Good and Fair
Deficiency	No deficiencies recorded
Non Battery Pack	Inspected
Condition	3- Fair
Deficiency	FIXTURE LAMP NOT OPERATIONAL
Deficiency Location/Instance	Locker Room - Girls
Deficiency Quantity	2
Quantity Uom	EACH
Potential Action	MAINTENANCE
Urgency of Action	PRIORITY 5
Purpose of Action	LEVEL 4
Violations	11688123P
EXIT/EMERGENCY LIGHT	Does not exist
FIRE ALARM SYSTEM	Inspected
Bell/Horn	Inspected
Condition	3- Fair
Deficiency	No deficiencies recorded
Strobe	Does not exist
Manual Pull Station	Inspected
Condition	3- Fair
Deficiency	No deficiencies recorded
Fan Shutdown Control	Does not exist
Duct Smoke Detector	Does not exist
Area Smoke Detector	Does not exist
CO Detector	Does not exist
Heat Detector	Does not exist
Elevator Recall	Does not exist
Magnetic Door Holder/Contactor	Does not exist
Fused Cutout Panel	Inspected
Condition	3- Fair
Deficiency	No deficiencies recorded
Fire Alarm Digital Communicator	Does not exist
Main Panel	Inspected
Bell At Panel	Inspected
Condition	3- Fair
Deficiency	No deficiencies recorded
Fire Alarm Control Panel (Electronic)	Does not exist
Fire Alarm Control Panel (Standard)	Inspected
Instance	Boiler Room C9
Instance Condition	3- Fair
Instance Quantity	1
Instance Quantity Uom	EACH
Manufacturer	Edwards
EquipmentId	Fire Alarm Box
Installation Year	1958
Source of Installation Year	Documented
Deficiency	BEYOND USEFUL LIFE
Deficiency Location/Instance	Boiler Room C9
Deficiency Quantity	133,000

**NYC Department of Education
Building Condition Assessment Survey 2023-2024**

Electrical Inspection

X149

Question	Response
FIRE ALARM SYSTEM	
Main Panel	
Fire Alarm Control Panel (Standard)	
Quantity Uom	S.F.
Potential Action	REPLACE
Urgency of Action	PRIORITY 1
Purpose of Action	LEVEL 2
Violations	No violations recorded
Sub-Panel	Inspected
Bell At Panel	Inspected
Condition	3- Fair
Deficiency	No deficiencies recorded
Fire Alarm Control Panel (Electronic)	Does not exist
Fire Alarm Control Panel (Standard)	Inspected
Instance	Boiler Room
Instance Condition	3- Fair
Instance Quantity	1
Instance Quantity Uom	EACH
Manufacturer	Edwards
EquipmentId	Sprinkler Control Panel
Installation Year	1958
Source of Installation Year	Documented
Deficiency	BEYOND USEFUL LIFE
Deficiency Location/Instance	Boiler Room
Deficiency Quantity	133,000
Quantity Uom	S.F.
Potential Action	REPLACE
Urgency of Action	PRIORITY 1
Purpose of Action	LEVEL 2
Violations	No violations recorded
Instance	Boiler Room C9
Instance Condition	3- Fair
Instance Quantity	1
Instance Quantity Uom	EACH
Manufacturer	Edwards
EquipmentId	Fire Alarm Box
Installation Year	1958
Source of Installation Year	Documented
Deficiency	BEYOND USEFUL LIFE
Deficiency Location/Instance	Boiler Room C9
Deficiency Quantity	133,000
Quantity Uom	S.F.
Potential Action	REPLACE
Urgency of Action	PRIORITY 1
Purpose of Action	LEVEL 2
Violations	No violations recorded
Remote Annunciator	Inspected
Display Monitor	Does not exist
Panel	Does not exist
Printer	Does not exist
Punch Register	Inspected
Condition	5- Poor
Deficiency	REGISTER NOT OPERATIONAL
Deficiency Location/Instance	Custodian's Office
Deficiency Quantity	1

**NYC Department of Education
Building Condition Assessment Survey 2023-2024**

Electrical Inspection

X149

Question	Response
FIRE ALARM SYSTEM	
Remote Annunciator	
Punch Register	
Quantity Uom	EACH
Potential Action	REPLACE
Urgency of Action	PRIORITY 5
Purpose of Action	LEVEL 2
Violations	No violations recorded
Sprinkler Flow/Air Pressure Switch	
Condition	Inspected
Deficiency	3- Fair
Deficiency	No deficiencies recorded
Tamper Flow Switch/Chain	
Condition	Inspected
Deficiency	3- Fair
Deficiency	No deficiencies recorded
GROUNDING SYSTEM	
Condition	Inspected
Deficiency	3- Fair
Deficiency	No deficiencies recorded
INTERCOM SYSTEM	
Condition	Does not exist
LAN	
Condition	Inspected
Local Distribution Frame (I/LDF)	
Condition	Inspected
Deficiency	1- Good
Deficiency	No deficiencies recorded
Main Equipment Rack (MDF)	
Condition	Inspected
Deficiency	1- Good
Deficiency	No deficiencies recorded
LIGHTNING PROTECTION	
Condition	Does not exist
MOTOR CONTROLLER	
Condition	Inspected
MOTOR CONTROL CENTER	
Condition	Does not exist
MOTOR STARTER/CONTACTOR	
Condition	Inspected
Deficiency	3- Fair
Deficiency	No deficiencies recorded
Variable Frequency Drive	
Condition	Inspected
Deficiency	2- Between Good and Fair
Deficiency	No deficiencies recorded
PANEL BOARD	
Condition	Inspected
Fused Disconnect Switch Type	
Condition	Does not exist
Fused Knife Switch Type	
Condition	Does not exist
Fused Toggle Switch Type	
Condition	Inspected
Deficiency	3- Fair
Deficiency	PANEL BOARD BEYOND USEFUL LIFE
Deficiency Location/Instance	Electrical Room C12
Deficiency Quantity	2
Quantity Uom	EACH
Potential Action	REPLACE-UPGRADE
Urgency of Action	PRIORITY 1
Purpose of Action	LEVEL 2
Violations	No violations recorded
Molded Case Circuit Breaker Type	
Condition	Inspected
Deficiency	3- Fair
Deficiency	PANEL BOARD BEYOND USEFUL LIFE
Deficiency Location/Instance	Throughout the Building
Deficiency Quantity	23
Quantity Uom	EACH
Potential Action	REPLACE-UPGRADE
Urgency of Action	PRIORITY 1

**NYC Department of Education
Building Condition Assessment Survey 2023-2024**

Electrical Inspection

X149

Question	Response
PANEL BOARD	
Molded Case Circuit Breaker Type	
Purpose of Action	LEVEL 2
Violations	No violations recorded
PUBLIC ADDRESS SYSTEM	
	Inspected
Instance	Main Office
Instance Condition	3- Fair
Instance Quantity	1
Instance Quantity Uom	EACH
Model	Dukane 250
Installation Year	2001
Source of Installation Year	Documented
Deficiency	No deficiencies recorded
SECURITY	
	Inspected
IPDVS/CCTV System	
	Inspected
Condition	2- Between Good and Fair
Installation Year	2015
Source of Installation Year	Documented
Deficiency	No deficiencies recorded
Intrusion Alarm System	
	Inspected
Central Control Panel	
	Inspected
Instance	Electrical Room
Instance Condition	3- Fair
Instance Quantity	1
Instance Quantity Uom	EACH
Model	Vista - 50P
Installation Year	1999
Source of Installation Year	Documented
Deficiency	No deficiencies recorded
Infrared Sensor	
	Inspected
Condition	3- Fair
Deficiency	No deficiencies recorded
Panic Switch	
	Inspected
Condition	3- Fair
Deficiency	No deficiencies recorded
Remote Annunciator	
	Inspected
Condition	3- Fair
Deficiency	No deficiencies recorded
Siren/Strobe	
	Inspected
Condition	3- Fair
Deficiency	No deficiencies recorded
Lighting - Security	
	Inspected
Condition	3- Fair
Deficiency	LIGHTING FIXTURE BALLAST DEFECTIVE
Deficiency Location/Instance	Main Roof by Exits 3 and 4
Deficiency Quantity	3
Quantity Uom	EACH
Potential Action	REPLACE BALLAST
Urgency of Action	PRIORITY 3
Purpose of Action	LEVEL 3
Violations	No violations recorded
SERVICE SWITCH	
	Inspected
Instance	Electrical Room C12
Instance Condition	3- Fair

**NYC Department of Education
Building Condition Assessment Survey 2023-2024**

Electrical Inspection

X149

Question	Response
SERVICE SWITCH	
Instance Quantity	1
Instance Quantity Uom	EACH
Manufacturer	Lexington
EquipmentId	Service A
Capacity/Size Quantity	1600
Capacity/Size UOM	Amps
Source of Capacity/Size	Fuse Size
Installation Year	1958
Source of Installation Year	Documented
Deficiency	BEYOND USEFUL LIFE
Deficiency Location/Instance	Electrical Room C12
Deficiency Quantity	1
Quantity Uom	EACH
Potential Action	REPLACE
Urgency of Action	PRIORITY 1
Purpose of Action	LEVEL 2
Violations	No violations recorded
Instance	Electrical Room C12
Instance Condition	3- Fair
Instance Quantity	1
Instance Quantity Uom	EACH
Manufacturer	Lexington
EquipmentId	Service B
Capacity/Size Quantity	1600
Capacity/Size UOM	Amps
Source of Capacity/Size	Fuse Size
Installation Year	1958
Source of Installation Year	Documented
Deficiency	BEYOND USEFUL LIFE
Deficiency Location/Instance	Electrical Room C12
Deficiency Quantity	1
Quantity Uom	EACH
Potential Action	REPLACE
Urgency of Action	PRIORITY 1
Purpose of Action	LEVEL 2
Violations	No violations recorded
SWITCHBOARD	Inspected
Number of Spares	0
Fused Disconnect Switch Type	Does not exist
Fused Knife Switch Type	Does not exist
Molded Case Circuit Breaker Type	Inspected
Instance	Electrical Room C12
Instance Condition	3- Fair
Instance Quantity	1
Instance Quantity Uom	EACH
Manufacturer	Lexington Electric
EquipmentId	N/A
Capacity/Size Quantity	1600
Capacity/Size UOM	Amps Total
Capacity/Size 2 Quantity	1
Capacity/Size 2 UOM	Section(s)
Source of Capacity/Size	Service Switch Fuse Size
Installation Year	1958
Source of Installation Year	Documented
Deficiency	BEYOND USEFUL LIFE

**NYC Department of Education
Building Condition Assessment Survey 2023-2024**

Electrical Inspection

X149

Question	Response
SWITCHBOARD	
Molded Case Circuit Breaker Type	
Deficiency Location/Instance	Electrical Room C12
Deficiency Quantity	1
Quantity Uom	EACH
Potential Action	REPLACE
Urgency of Action	PRIORITY 1
Purpose of Action	LEVEL 2
Violations	No violations recorded
Instance	Electrical Room C12
Instance Condition	3- Fair
Instance Quantity	1
Instance Quantity Uom	EACH
Manufacturer	Lexington Electric
EquipmentId	N/A
Capacity/Size Quantity	1600
Capacity/Size UOM	Amps Total
Capacity/Size 2 Quantity	1
Capacity/Size 2 UOM	Section(s)
Source of Capacity/Size	Service Switch Fuse Size
Installation Year	1958
Source of Installation Year	Documented
Deficiency	BEYOND USEFUL LIFE
Deficiency Location/Instance	Electrical Room C12
Deficiency Quantity	1
Quantity Uom	EACH
Potential Action	REPLACE
Urgency of Action	PRIORITY 1
Purpose of Action	LEVEL 2
Violations	No violations recorded
TELEPHONE SYSTEM	Inspected
PBX/Intercom	Inspected
Condition	2- Between Good and Fair
Deficiency	No deficiencies recorded
Standard	Inspected
Condition	2- Between Good and Fair
Deficiency	No deficiencies recorded
TRANSFORMER	Does not exist