

Economy



Agriculture near Hazelton

Photo Courtesy of Idaho Tourism

Labor and Wages

Labor Force	2011	2012	2013	2014	2015
Civilian Labor Force	765,178	769,617	772,513	781,390	797,475
Unemployment	63,712	55,636	47,558	37,816	33,012
% Unemployed	8.3	7.2	6.2	4.8	4.1
Employment	701,466	713,981	724,955	743,574	764,463

Source: *Work Force Trends*, Idaho Department of Labor

Average Annual Employment & Wages Per Job

	2005		2014		2015	
	Avg Empl	Avg Wage	Avg Empl	Avg Wage	Avg Empl	Avg Wage
Agriculture	21,183	\$24,219	23,458	\$31,730	24,352	\$32,780
Mining	2,166	\$45,650	2,424	\$75,641	2,332	\$70,276
Construction	45,157	\$32,068	33,848	\$39,255	36,286	\$39,921
Manufacturing	63,638	\$42,616	59,823	\$58,432	61,513	\$55,397
Trade, Utilities, & Transportation	121,174	\$25,591	129,149	\$35,497	133,323	\$36,884
Information	10,328	\$36,547	9,202	\$46,362	9,184	\$47,015
Financial Activities	27,742	\$38,082	27,986	\$48,462	28,841	\$50,204
Professional & Business Services	77,684	\$36,024	77,920	\$43,218	79,524	\$45,341
Educational & Health Services	64,803	\$30,434	88,805	\$38,244	91,824	\$39,354
Leisure & Hospitality	57,327	\$11,814	65,636	\$14,671	66,020	\$15,259
Other Services	14,897	\$21,455	15,890	\$26,627	16,585	\$27,504
Government	108,484	\$31,857	112,447	\$38,076	113,538	\$39,470

Source: *Work Force Trends*, Idaho Department of Labor

Idaho Rankings in Employment & Labor

	Value	US Ranking	NW Ranking*
Average Annual Pay (2014)	\$37,982	49	7
Unemployment Rate (2015)	3.9%	39	2
Labor Force: % Women (2014)	55.9%	34	7
Job Growth (2014–2015)	4.4%	1	1
% Emp: Construction (2015)	6.0%	6	3
% Emp: Manufacturing (2015)	9.4%	22	2
% Emp: Mining/Logging (2015)	0.5%	18	5
% Emp: Ed and Health Svcs (2015)	14.3%	32	4

*Idaho's rank relative to the state's six neighbors: Montana, Wyoming, Utah, Nevada, Oregon and Washington. Values are Ranked from High to Low (Highest = 1)

Source: *Idaho Fiscal Facts 2016: A Legislator's Handbook of Facts, Figures, & Trends*

Annual Average Labor Force (2016)

County Name	Labor Force	Employed	Unemployed	% Unemployed
Ada	225,083	217,596	7,487	3.3%
Adams	1,744	1,620	124	7.1%
Bannock	42,300	40,817	1,483	3.5%
Bear Lake	2,827	2,697	130	4.6%
Benewah	4,036	3,785	251	6.2%
Bingham	22,748	21,932	816	3.6%
Blaine	11,797	11,419	378	3.2%
Boise	3,139	2,966	173	5.5%
Bonner	18,820	17,791	1,029	5.5%
Bonneville	52,175	50,500	1,675	3.2%
Boundary	5,080	4,810	270	5.3%
Butte	1,306	1,252	54	4.1%
Camas	657	632	25	3.8%
Canyon	93,761	89,654	4,107	4.4%
Caribou	3,753	3,615	138	3.7%
Cassia	11,601	11,249	352	3.0%
Clark	399	385	14	3.5%
Clearwater	3,063	2,834	229	7.5%
Custer	2,139	2,027	112	5.2%
Elmore	10,878	10,416	462	4.2%
Franklin	6,569	6,365	204	3.1%
Fremont	7,392	7,142	250	3.4%
Gem	7,741	7,376	365	4.7%
Gooding	8,003	7,751	252	3.1%
Idaho	6,425	6,057	368	5.7%
Jefferson	12,718	12,319	399	3.1%
Jerome	11,581	11,220	361	3.1%
Kootenai	73,499	69,998	3,501	4.8%
Latah	19,801	19,151	650	3.3%
Lemhi	3,396	3,182	214	6.3%
Lewis	1,615	1,510	105	6.5%
Lincoln	2,654	2,535	119	4.5%
Madison	20,449	19,944	505	2.5%
Minidoka	10,821	10,468	353	3.3%
Nez Perce	20,884	20,184	700	3.4%
Oneida	2,169	2,088	81	3.7%
Owyhee	5,395	5,151	244	4.5%
Payette	11,239	10,707	532	4.7%
Power	3,905	3,741	164	4.2%
Shoshone	5,080	4,708	372	7.3%
Teton	5,996	5,803	193	3.2%
Twin Falls	40,466	39,098	1,368	3.4%
Valley	4,914	4,641	273	5.6%
Washington	4,557	4,299	258	5.7%

Source: *Local Area Unemployment Statistics, County Data*: US Department of Labor, Bureau of Labor Statistics

Per Capita Income

	2011	2012	2013	2014	2015
State of Idaho	\$33,677	\$35,142	\$36,146	\$37,153	\$38,392
United States	\$42,332	\$44,200	\$44,765	\$46,414	\$48,112

Source: *Work Force Trends*, Idaho Department of Labor

County Per Capita Income (2012)

Ada	\$46,053	Gem	\$32,963
Adams	\$36,800	Gooding	\$55,281
Bannock	\$33,344	Idaho	\$30,711
Bear Lake	\$35,867	Jefferson	\$30,407
Benewah	\$32,134	Jerome	\$37,418
Bingham	\$33,422	Kootenai	\$38,605
Blaine	\$87,496	Latah	\$36,425
Boise	\$36,828	Lemhi	\$36,860
Bonner	\$34,634	Lewis	\$44,969
Bonneville	\$39,814	Lincoln	\$36,100
Boundary	\$31,283	Madison	\$23,456
Butte	\$33,506	Minidoka	\$37,614
Camas	\$39,431	Nez Perce	\$39,358
Canyon	\$28,258	Oneida	\$32,056
Caribou	\$38,795	Owyhee	\$32,867
Cassia	\$42,823	Payette	\$35,045
Clark	\$26,480	Power	\$36,019
Clearwater	\$33,885	Shoshone	\$35,229
Custer	\$43,399	Teton	\$31,023
Elmore	\$34,851	Twin Falls	\$35,079
Franklin	\$32,057	Valley	\$45,902
Fremont	\$34,828	Washington	\$35,649

Source: US Dept. of Commerce, Bureau of Economic Analysis: *Regional Data*

Major Private Employers

Business	Industry
Albertsons	Retail Trade
Battelle Energy Alliance	Professional & Technical Services
Brigham Young University Idaho	Private Education
Hewlett-Packard Company	Technology & Manufacturing
Idaho Power Co	Public Utilities
J. R. Simplot Company	Manufacturing
Kootenai Medical Center	Health Services
Micron Technology	Technology & Manufacturing
Saint Alphonsus Regional Medical Center	Health Services
St. Lukes Regional Medical Center	Health Services
Wal-Mart	Retail Trade
Wells Fargo Bank	Banking

Source: *Work Force Trends*, Idaho Department of Labor

Major Industry Employment & Payroll (2015)

Description	Number of Employees	Annual Payroll (\$1,000)
Agriculture, Forestry, Fishing and Hunting	3,431	\$131,662
Mining, Quarrying, and Oil and Gas Extraction	2,832	\$229,864
Utilities	3,606	\$321,312
Construction	34,903	\$1,520,141
Manufacturing	57,884	\$3,067,737
Wholesale Trade	30,283	\$1,854,952
Retail Trade	82,400	\$2,206,022
Transportation and Warehousing	18,419	\$698,096
Information	11,917	\$595,006
Finance and Insurance	21,637	\$1,193,854
Real Estate and Rental and Leasing	7,190	\$244,775
Professional, Scientific, and Technical Services	33,003	\$1,800,974
Management of Companies and Enterprises	8,368	\$627,724
Administrative and Support and Waste Management and Remediation	39,518	\$1,090,882
Educational Services	13,649	\$299,620
Health Care and Social Assistance	89,070	\$3,666,243
Arts, Entertainment, and Recreation	9,180	\$161,139
Accommodation and Food Services	59,491	\$897,520
Other Services (except Public Administration)	19,631	\$510,144
Industries not classified	112	\$1,950
Total	546,524	\$21,119,617

Source: U.S. Bureau of the Census, County Business Patterns, censtat database

Agriculture

	Value	Ranking	
		US	NW*
Number of Farms (2015)	24,400	33	4
Avg Acres Per Farm (2015)	484	14	5
Farm Income: Crops (2014)	\$3,296,962,000	21	2
Farm Income: Livestock (2014)	\$5,471,055,000	13	1
Farm Income: Gov't Pymts (2014)	\$82,968,000	30	5
Acres Planted (2015)	4,109,000	22	2
Acres Harvested (2015)	3,944,000	22	2

*Idaho's rank relative to the state's six neighbors: Montana, Wyoming, Utah, Nevada, Oregon and Washington. Values are Ranked from High to Low (Highest = 1)

Source: *Idaho Fiscal Facts 2016: A Legislator's Handbook of Facts, Figures, & Trends*

Cash Receipts Breakdown – Livestock & Crops

2015 Livestock Cash Receipts	\$4,551,997
2015 Crops Cash Receipts	\$2,911,720
2015 Total Cash Receipts	\$7,463,717

Source: *Idaho Agriculture Facts 2016*, Idaho State Department of Agriculture

2015 Top Idaho Commodities

Product	Rank	% of US
Potatoes	1	32
Trout	1	47
Austrian Winter Peas	1	51
Barley	2	25
Alfalfa Hay	2	7
Sugarbeets	2	19
Wrinkled Seed Peas	2	40
Prunes & Plums (Fresh)	3	21
Hops	3	11
All Mint	3	19
Cheese	3	8
Milk	3	7
Dry Edible Peas	4	4
Lentils	4	4
Milk Cows	4	6
Onions (Summer Storage)	5	11
Dry Edible Beans	5	7
Spring Wheat	5	5
Sweet Cherries	5	1
Canola	6	1
Sheep and Lambs	6	5
Winter Wheat	7	4
Wool	8	6
All Hay	10	4
All Cattle and Calves	13	3
Honey	14	2

Source: *Idaho Agriculture Facts 2016*, Idaho State Department of Agriculture

Idaho Food and Agriculture Products Exported (2015)

Commodity	\$ (Millions)
Dairy	\$344.9
Wheat	\$258.4
Processed Vegetables	\$252.1
Beef	\$157.2
Feeds	\$140.4
Fresh Vegetables	\$131.9
Livestock	\$61.7
Processed Grain Products	\$64.1
Hides and Skins	\$48.3
Corn	\$10.5
Poultry	\$8.7
Fresh Fruits	\$5.9
Processed Fruits	\$5.7
Pork	\$5.3
Vegetable Oils	\$0.9
Other	\$381.1
Total	\$1,877.2

Source: *Idaho Agriculture Facts 2016*, Idaho State Department of Agriculture

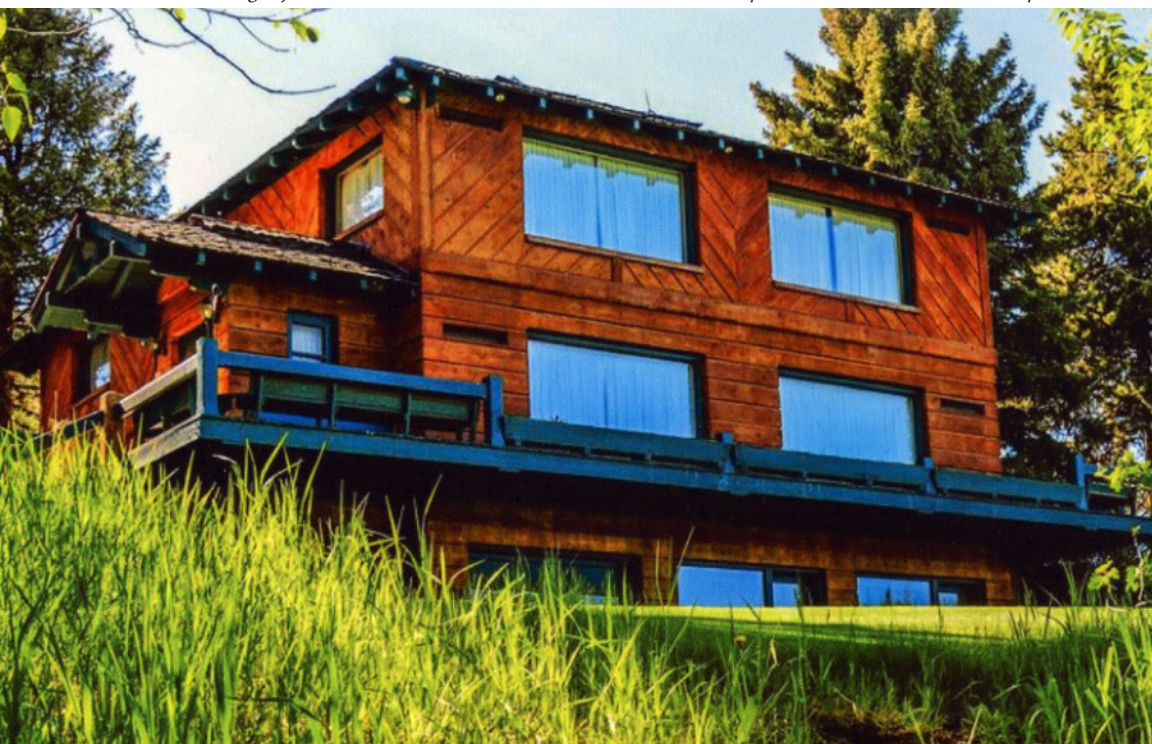
2015 Top Idaho Commodities

Commodity	Harvested Acres	Cash Receipts (\$1000)
Milk (all)	N/A	\$3,204,663
Cattle and Calves	N/A	\$1,731,000
Potatoes	322,000	\$912,800
Hay	1,330,000	\$836,640
Wheat	1,155,000	\$478,800
Sugarbeets	172,000	N/A
Barley	580,000	\$306,763
Dry Edible Beans	119,000	\$70,011
Corn (Grain)	70,000	\$68,103
Onions	8,000	\$49,803
Peppermint	15,200	\$34,154
Hops	4,900	\$30,799
Apples	2,300	\$14,978
Dry Edible Peas	50,000	\$9,380
Lentils	32,000	\$8,960
Peaches	900	\$6,253
Honey	N/A	\$5,468
Sweet Cherries	700	\$3,636
Spearmint	1,300	\$3,629
Oats	15,000	\$3,806
Prunes & Plums	400	\$1,021

Source: *Idaho Agriculture Facts 2016*, Idaho State Department of Agriculture

Ernest Hemingway House

Photo Courtesy of Idaho State Historical Society



Where Idaho Agricultural Exports Go: 2015 Export Market Share

Country	% Market Share
Mexico	24.31%
Canada	19.95%
China	7.87%
South Korea	7.05%
Japan	4.8%
Indonesia	3.71%
Netherlands	3.31%
Spain	2.53%
Thailand	2.2%
Australia	1.77%
Chile	1.74%
Philippines	1.68%
Taiwan	1.47%
Peru	1.41%
Other	16.2%

Source: *Idaho Agriculture Facts 2016*, Idaho State Department of Agriculture

Transportation

	Value	Ranking	
		US	NW*
Per Cap Fed Highway Fund (2011)	\$171	10	3
% Federally Funded Road & Street Miles (2011)	23.7	32	4
Pub Road & Street Mileage (2011)	48,082	35	4
Highway Fatalities Per 100 Million Vehicle Miles (2011)	1.34	14	2
Alcohol Related Fatalities as a % of all Highway Fatalities (2011)	34	29	5
Safety Belt Usage Rate (2012)	80%	40	6
Vehicle Registrations (2011)	1,692,457	38	5
% Fatalities Young Drivers	7.5	5	2

*Idaho's rank relative to the state's six neighbors: Montana, Wyoming, Utah, Nevada, Oregon and Washington. Values are Ranked from High to Low (Highest = 1)

Source: *Idaho Fiscal Facts 2016: A Legislator's Handbook of Facts, Figures, & Trends*

Revenue and Expenditures

GLOSSARY OF TERMS

Fiscal Year (FY): The accounting year used by the state, July 1 of a given year through June 30 of the following year.

Appropriation:

1. Annual fixed budgets that state officers, departments and institutions may not exceed.

2. That portion of the total state budget allocated by the Legislature to a state agency or program for one fiscal year.

Classification of funds:

1. General: The state's primary source of revenue. In FY 2010 General Fund revenue came from taxes on tobacco and alcohol (1.8%), corporate income tax (4.3%), sales tax (42.2%), individual income tax (46.9%), and the remainder from a variety of other taxes and certain licenses and fees not specifically appropriated to any other fund (4.8%). General tax revenues are used to finance the operations of state government that do not have their own dedicated source of revenue, such as education and prisons.

2. Dedicated/Other: Represents revenue received from a specified source or sources, and disbursed for a specific function or government as required by law. For example, the Department of Fish & Game receives no General Fund money. Instead, the revenue generated by the sale of fishing and hunting licenses and tags is dedicated exclusively to paying for the department's fish and wildlife management and activities.

3. Federal: Identifies moneys from the federal government for specified state administered services.

General Fund Revenues (Millions)

By Revenue Source	FY 2016	FY 2017	% Chg
Individual Income Tax	\$1,513.2	\$1,584.1	4.7%
Corporate Income Tax	\$186.9	\$202.2	8.2%
Sales Tax	\$1,303.0	\$1,376.5	5.6%
All Other Sources	\$180.6	\$179.7	(0.5%)
Revenues*	\$3,183.7	\$3,342.5	5.0%

*Totals may not add due to rounding

Source: *Idaho Fiscal Facts 2016: A Legislator's Handbook of Facts, Figures, & Trends*

General Fund Appropriations (Millions)

By Functional Area	FY 2016	FY 2017	% Chg
Education	\$1,904.3	\$2,051.7	7.7%
Natural Resources	\$37.5	\$45.1	20.3%
Public Safety	\$312.8	\$326.0	4.2%
General Government	\$105.3	\$111.8	6.2%
Health & Human Services	\$685.3	\$704.5	2.8%
Economic Development	\$26.8	\$34.0	26.9%
Revenues*	\$3,071.9	\$3,273.0	6.5%

*Totals may not add due to rounding

Source: *Idaho Fiscal Facts 2016: A Legislator's Handbook of Facts, Figures, & Trends*

Appropriations by Fund Source (Millions)

By Fund Source	FY 2016	FY 2017	% Chg
General Fund	\$3,071.9	\$3,273.0	6.5%
Dedicated Funds	\$1,438.3	\$1,661.5	15.5%
Federal Funds	\$2,480.9	\$2,668.1	7.5%
Revenues*	\$6,991.1	\$7,602.6	8.7%

*Totals may not add due to rounding

Source: *Idaho Fiscal Facts 2016: A Legislator's Handbook of Facts, Figures, & Trends*

All Funds Appropriations (Millions)

By Functional Area	FY 2016	FY 2017	% Chg
Education	\$2,569.4	\$2,745.7	6.9%
Economic Development	\$776.6	\$978.3	26.0%
Public Safety	\$416.4	\$442.9	6.4%
Natural Resources	\$269.9	\$303.8	12.6%
Health and Human Services	\$2,649.6	\$2,815.3	6.3%
General Government	\$309.2	\$316.6	2.4%
Total Appropriations*	\$6,455.3	\$6,687.9	5.6%

*Totals may not add due to rounding

Source: *Idaho Fiscal Facts 2016: A Legislator's Handbook of Facts, Figures, & Trends*

Lands

Idaho Land Ownership

Description	Acres	% of Total
Federal Land	33,412,277	63.1%
BLM	11,836,481	22.3%
USFS	20,458,276	38.6%
Other	1,117,520	2.1%
State Land	2,693,260	5.1%
Endowments	2,458,405	4.6%
Fish & Game	187,769	0.4%
Parks & Recreation	38,407	0.1%
U of I Board of Regents	8,679	0.0%
Private Land	16,271,679	30.7%
Tribal Land	464,077	0.9%
County Land	96,311	0.2%
Municipal Land	22,972	0.0%
Total	52,960,576	100.0%

Idaho is the 14th largest state. Its 53 million acres include 500,000 acres of lakes, reservoirs and rivers.

Source: *Idaho Fiscal Facts 2016: A Legislator's Handbook of Facts, Figures, & Trends*

Land Ownership by County (in acres)

County	Federal	%	Local Gov,		Total
			State & Tribal	Private	
Custer	2,937,675	93%	56,206	158,503	3,152,384
Lemhi	2,648,258	91%	39,705	233,189	2,921,152
Valley	2,063,164	88%	69,733	221,151	2,354,048
Butte	1,229,906	86%	15,639	183,511	1,429,056
Idaho	4,523,385	83%	85,983	821,160	5,430,528
Blaine	1,314,806	78%	65,429	312,501	1,692,736
Owyhee	3,727,155	76%	474,728	712,293	4,914,176
Lincoln	584,486	76%	22,998	164,100	771,584
Shoshone	1,255,653	74%	60,641	370,066	1,685,760
Boise	900,540	74%	89,738	337,322	1,217,600
Elmore	1,327,041	67%	120,397	522,354	1,969,792
Clark	747,690	66%	80,905	300,813	1,129,408
Camas	445,876	65%	27,143	214,981	688,000
Adams	565,066	65%	39,769	268,573	873,408
Boundary	495,219	61%	108,775	208,038	812,032
Fremont	708,023	59%	116,413	370,316	1,194,752
Cassia	925,150	56%	54,066	663,408	1,642,624
Clearwater	841,755	53%	244,332	489,337	1,575,424
Oneida	409,305	53%	13,048	345,903	768,256
Bonneville	623,145	52%	59,641	513,118	1,195,904
Twin Falls	640,399	52%	33,541	558,124	1,232,064
Gooding	237,503	51%	20,971	209,238	467,712
Jefferson	328,226	47%	29,471	343,168	700,864
Bear Lake	287,994	46%	19,187	314,515	621,696
Banner	492,593	44%	178,691	440,780	1,112,064
Caribou	447,779	40%	132,004	550,521	1,130,304
Gem	135,009	37%	22,230	202,825	360,064
Washington	345,204	37%	75,077	511,815	932,096
Minidoka	174,649	36%	11,118	300,441	486,208
Power	300,239	33%	106,549	492,860	899,648
Teton	95,131	33%	1,850	191,275	288,256
Franklin	139,255	33%	13,299	273,366	425,920
Kootenai	254,276	32%	60,624	482,028	796,928
Bannock	221,402	31%	108,668	382,378	712,448
Bingham	392,484	29%	280,457	667,731	1,340,672
Ada	196,633	29%	55,030	423,537	675,200
Payette	66,136	25%	10,804	183,860	260,800
Jerome	96,510	25%	10,471	276,955	383,936
Madison	63,519	21%	24,212	214,093	301,824
Latah	112,791	16%	43,602	532,695	689,088
Benewah	48,887	10%	70,842	376,911	496,640
Nez Perce	33,771	6%	96,596	413,057	543,424
Canyon	20,486	5%	3,750	353,236	377,472
Lewis	8,104	3%	22,886	275,634	
Total	33,412,277	63%	3,276,619	16,271,680	52,960,576

Source: Idaho Fiscal Facts 2016: A Legislator's Handbook of Facts, Figures, & Trends

Economy and Industry

Total Housing Units (2010)

Ada	155,754	Gem	6,999
Adams	2,381	Gooding	6,038
Bannock	32,397	Idaho	8,574
Bear Lake	3,815	Jefferson	8,337
Benewah	4,557	Jerome	7,831
Bingham	15,873	Kootenai	61,173
Blaine	14,818	Latah	15,663
Boise	5,178	Lemhi	4,669
Bonner	23,773	Lewis	1,869
Bonneville	38,626	Lincoln	2,190
Boundary	4,981	Madison	10,987
Butte	1,415	Minidoka	7,665
Camas	767	Nez Perce	17,297
Canyon	67,649	Oneida	1,894
Caribou	3,226	Owyhee	4,769
Cassia	8,289	Payette	8,875
Clark	522	Power	2,957
Clearwater	4,411	Shoshone	7,070
Custer	2,960	Teton	4,973
Elmore	11,969	Twin Falls	30,406
Franklin	4,436	Valley	11,246
Fremont	8,288	Washington	4,456
		Total	652,323

Source: US Census Bureau

Hagerman State Bank

Photo Courtesy of Laura Weston





Eastern Idaho Fairgrounds

Photo Courtesy of Idaho State Historical Society

Average Cost of Living (2016)

Based on average housing costs, utilities, health care, transportation, groceries, and other services, Idaho ranks 6th for lowest cost-of-living in the US. The national average index is 100.00. A state with an index of 95.00 has a cost-of-living that is 5% lower than the national average. The list below provides a comparison of the relative cost-of-living in the western states.

State	Index
Idaho	89.6
Wyoming	91.7
Utah	92.8
New Mexico	95.7
Arizona	98.1
Montana	100.8
Colorado	102.1
Nevada	104.5
Washington	107.1
Oregon	115.4
California	134.8

Source: Missouri Economic Research and Information Center

Export Markets for Idaho Goods (2016)

Canada	\$938,732,177
Singapore	\$902,544,399
Taiwan	\$637,302,525
China	\$620,121,063
Malaysia	\$344,920,014
Mexico	\$235,822,960
Japan	\$196,881,203
South Korea	\$154,549,098
United Kingdom	\$114,748,457
Hong Kong	\$82,752,159
Netherlands	\$71,380,804
Brazil	\$63,892,844
Philippines	\$57,799,986
Australia	\$55,544,875
France	\$35,017,330
All Other Countries	\$364,193,788

Source: *Idaho Department of Commerce*

Idaho Exports (2016)

Description	Export Totals	% Change since 2015
Semiconductors & Industrial	2,674,737,670	15.44
Food & Agriculture	750,699,249	-9.37
Transportation Equipment	544,668,347	289.07
Mining Products	316,649,715	12.80
Fertilizer, Pesticide, Chemicals	210,406,577	-23.72
Wood, Paper, Pulp, Printing	138,942,919	-27.61
Office, Home and Outdoor	70,508,596	-24.05
Personal Care Products	66,612,357	16.95
Fabricated Metal Products	57,935,079	-8.45
Other	37,228,648	-8.67
Apparel	6,335,481	11.53
Textiles	1,479,044	172.18

Source: *Idaho Department of Commerce*