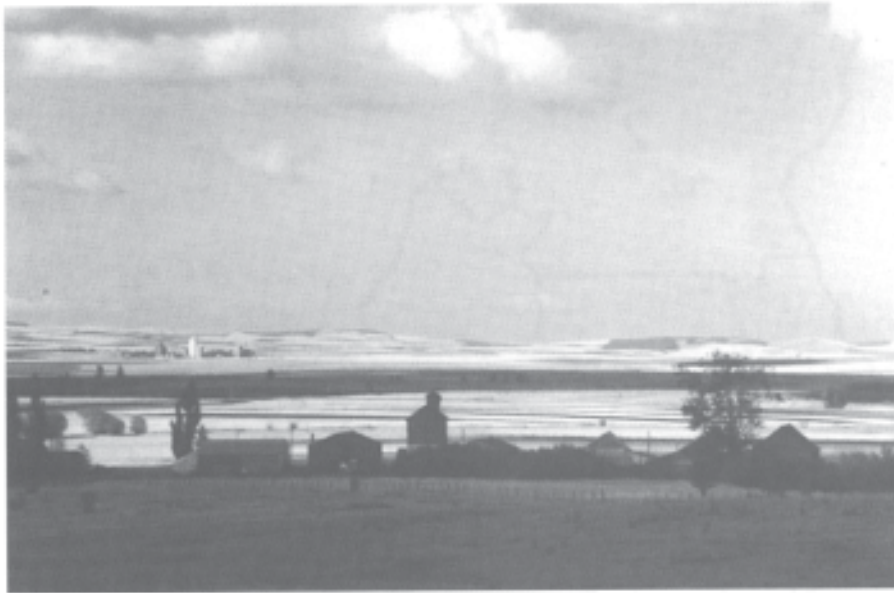


JUDICIAL BRANCH

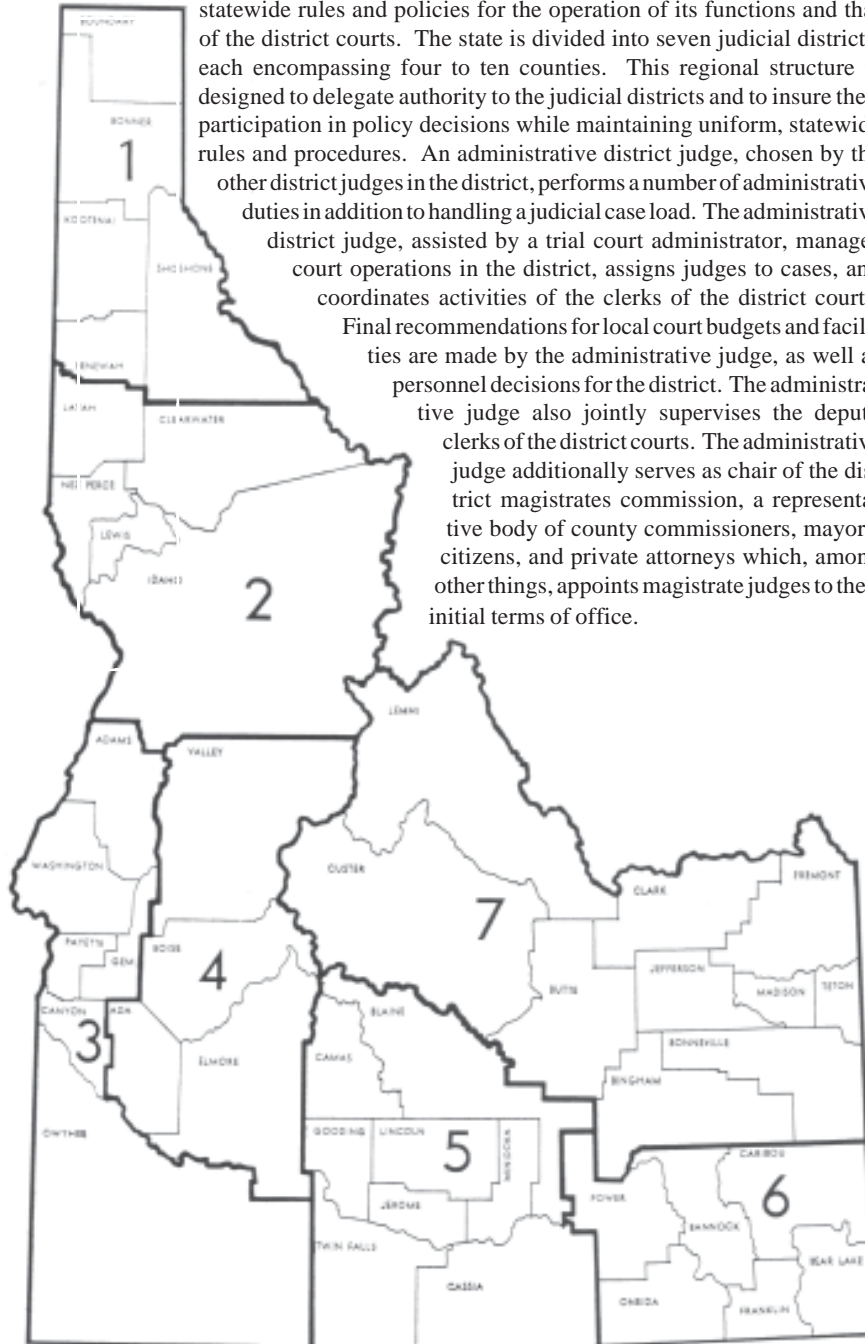


Camas Prairie near Grangeville

Photo Courtesy: Steve Lee

STATE JUDICIAL DISTRICTS

The Supreme Court, as supervisor of the entire court system, establishes statewide rules and policies for the operation of its functions and that of the district courts. The state is divided into seven judicial districts, each encompassing four to ten counties. This regional structure is designed to delegate authority to the judicial districts and to insure their participation in policy decisions while maintaining uniform, statewide rules and procedures. An administrative district judge, chosen by the other district judges in the district, performs a number of administrative duties in addition to handling a judicial case load. The administrative district judge, assisted by a trial court administrator, manages court operations in the district, assigns judges to cases, and coordinates activities of the clerks of the district courts. Final recommendations for local court budgets and facilities are made by the administrative judge, as well as personnel decisions for the district. The administrative judge also jointly supervises the deputy clerks of the district courts. The administrative judge additionally serves as chair of the district magistrates commission, a representative body of county commissioners, mayors, citizens, and private attorneys which, among other things, appoints magistrate judges to their initial terms of office.



IDAHO COURTS

Idaho's court system today is recognized as a model for other states. Constitutional amendments in the early 1960's gave the Idaho Supreme Court management authority over the trial courts, firmly establishing the Supreme Court's rule making powers and providing a method of supervising trial operations. The judicial reform efforts which culminated on January 11, 1971, streamlined Idaho's trial courts by consolidating the various probate, justice and municipal courts into a general jurisdiction District Court, with a division for special types of actions. Thus unified, Idaho's court system is one of the nation's most modern in design.

Supreme Court

The Supreme Court of Idaho is the State's court of last resort. The Court hears appeals from final decisions of the District Court, as well as from orders of the Public Utilities Commission and the Industrial Commission. It has original jurisdiction to hear claims against the state and to issue writs of review, mandamus, certiorari, prohibition and habeas corpus, and all writs necessary to complete exercise of its appellate jurisdiction. The Idaho Supreme Court is one of the few "circuit-riding" supreme courts in the country, and holds terms of Court in Boise, Coeur d'Alene, Lewiston, Twin Falls, Pocatello and Idaho Falls.

The Supreme Court is responsible for the administration and supervision of the trial courts, as well as the operations of the staff of the Courts, the Supreme Court Clerk's Office and the State Law Library. These latter operations are located, along with the Justices' offices and courtrooms, in the Supreme Court Building in Boise.

The Supreme Court consists of five justices who are elected at large, on a nonpartisan ballot, for a term of six years with their terms being staggered so continuity on the Court will be maintained. A candidate for justice must be a qualified elector and a duly qualified attorney-at-law. The chief justice is elected by a majority of the justices, and serves as executive head of the state judiciary.

Court of Appeals

The Idaho Court of Appeals hears appeals from the district courts which are assigned by the Supreme Court. While review of decisions of the Court of Appeals may be sought from the Supreme Court, the Supreme Court is not required to grant the appeal. In most cases, decisions by the Court of Appeals are final.

The Court of Appeals has three judges, who review cases as a panel. While chambered in Boise, the judges may hear appeals arguments anywhere in the state.

Trial Courts

The district court is the trial court of general jurisdiction. A magistrate division exercises limited jurisdiction. The magistrate division, in turn, has a small claims department. While individual judges may serve either in district court cases or magistrate division cases, it is one integrated court.

The district court judges have original jurisdiction in all cases and proceedings. They may issue extraordinary writs, and may also hear appeals from the magistrate division, and certain agencies and boards. There are 39 district court judges, who sit in each of the 44 counties. They are Idaho attorneys, elected by nonpartisan ballot within the judicial district in which they serve. Each district court judge is served by a court reporter who makes a record of all proceedings and testimony in a case.

Judges of the magistrate division may hear civil cases where the amount of damages requested does not exceed \$10,000; proceedings in a forcible entry, forcible detainer and unlawful detainer; for the limited enforcement and foreclosure of common law and statutory

liens on real or personal property; proceedings in the probate of wills and the administration of estates of decedents and incapacitated persons; juvenile proceedings; criminal misdemeanor offenses; proceedings to prevent the commission of crimes; may issue warrants for the arrest or for searches and seizures; and may conduct preliminary hearings to determine probable cause on felony complaints.

There are 83 magistrate judges, with at least one magistrate judge resident within each county. Magistrate judges also hear small claims cases. These are minor civil cases where \$4,000 or less is involved. The small claims department is designed to provide a quick, inexpensive solution to such claims, including cases to recover possession of personal property up to a value of \$4,000. No attorneys are allowed in small claims cases, nor are there jury trials. Appeals from small claims decisions are taken to a lawyer magistrate judge. Additionally, seven district trial court administrators assist the Administrative District Judge and the Administrative Director of the Courts with the administration of the district court.

Administrative Director of the Courts

The Administrative Director of the Courts, acting under the supervision and direction of the Chief Justice of the Supreme Court, has a number of statutory duties which are specified in *Idaho Code* Section 1-612, including collecting statistical information about court operations, reporting the need for assistance in the handling of pending cases in the trial courts, preparing an annual report for the Supreme Court and Governor, examining the administrative and business methods and systems employed in the offices of the judges, clerks and other offices of the courts, and making recommendations to the Supreme Court for the improvement of the judicial system. The Supreme Court prescribes the following additional duties to be performed under the supervision and direction of the Chief Justice, which include:

1. Compile and prepare the annual judicial appropriations request for consideration and approval by the Court;
2. Develop and administer judicial training seminars and educational programs for the judges and court clerks of Idaho.
3. Review and recommend to the Court calendar management policies.
4. Advise the news media and the public of official functions of the Court and matters of general interest concerning the courts in Idaho.
5. Liaison for the court system as a whole with the legislature.

Supreme Court Clerk

The constitutional office of the Clerk of the Supreme Court performs a variety of important tasks for the judiciary. The clerk's office administers the processing of appeals, special writs, petitions, and provides other clerical functions of the Supreme Court and the Court of Appeals. The Supreme Court Clerk manages the calendars of both appellate courts, maintains an automated register of actions, which assures proper flow of cases and distribution of final opinions. The Supreme Court Clerk's Office is a valuable resource to district court clerks in providing assistance and advice regarding the preparation of the clerk's record and other relevant documents associated with an appeal of a trial court decision. The publication of the *Idaho Reports* is coordinated by the Supreme Court Clerk's office. Opinions of both the Supreme Court and the Court of Appeals are posted on the internet within 24 hours of their release, these opinions can be found at: <http://www.isc.idaho.gov/judicial.html>

STATE LAW LIBRARY

The Idaho State Law Library was established in 1869 under an Idaho territorial statute. It is operated by the State Law Librarian and is open to the public. The Law Library is a research

library not a lending library, that is widely used by the judiciary, public officials, lawyers, students, researchers and the general public. The state law library contains more than 130,000 bound volumes and thousands of pamphlets and unbound publications. In addition, the library is a depository for U.S. government publications.

The bound volume collection includes the reported cases of all federal and state courts of last resort, the statutes and session laws for each of the 50 states, together with some statutes and case reports of other English-speaking peoples. The State Law Library offers access to automated legal research tools such as WESTLAW and LEXIS. The internet address for the State Law Library is <http://www.isll.idaho.gov/>

JUDICIAL COUNCIL

The Idaho Judicial Council is empowered by statute to nominate to the Governor persons for appointments to vacancies in the Supreme Court, Court of Appeals, and district courts. It may make recommendations to the Supreme Court for the removal, discipline and retirement of judicial officers. It is comprised of seven members: the Chief Justice of the Supreme Court, who is chairman, a district court judge and two lawyers appointed by the governing board of the Idaho bar with the consent of the state senate and three non-attorney members appointed by the Governor with the consent of the senate. Sitting in its disciplinary capacity, the Council may investigate complaints against justices, court of appeals judges or judges of the district courts or magistrate divisions, and in appropriate cases it may recommend to the Supreme Court the removal, discipline or retirement of a justice, judge, or magistrate judge.

For additional information contact: Robert G. Hamlin, Executive Director
www2.state.id.us/ijc

Administrative Director and Court Staff

Supreme Court Building, 451 W. State, Boise 83720

Administrative Director-Patricia Tobias

334-2246

Director of Court Services - Corrie L. Keller

334-2248

Staff Attorney - Cathy Derden

334-3868

Director of Information Systems - John Peay

334-3868

**CHIEF JUSTICE OF THE
IDAHO SUPREME COURT
*GERALD F. SCHROEDER***



Chief Justice Gerald F. Schroeder was born in Boise. He attended public schools in Caldwell and Baker, Oregon, where he graduated as salutatorian. He received a B.A. degree in history from the College of Idaho, graduating magna cum laude, and received his law degree from the Harvard Law School.

Following graduation from law school Justice Schroeder was in private practice in Boise until he became an Assistant United States Attorney for the District of Idaho. In 1969 he was appointed Ada County Probate Judge where he served until 1971, when court reform eliminated the various city and county courts, and he was appointed as a Judge in the Magistrate Division for the Fourth District. In 1975 Governor Andrus appointed him as District Judge in the Fourth District, where he served as administrative judge for thirteen years. On January 20, 1995, Governor Batt appointed him to the Idaho Supreme Court.

Justice Schroeder has served on the Board of Directors of the Boise Philharmonic, the Boise Opera, and the Boise Racquet and Swim Club, including two terms as President, and served on the adjunctive faculty at Boise State University for a number of years. He has been active in the tennis community, including numerous tournament and sectional titles and participation in several national championship tournaments.

Chief Justice Schroeder has two children, Karl and Erich.

Salary: \$105,668.00

Term Expires: January 2009

**IDAHO SUPREME
COURT JUSTICE
*LINDA COPPLE TROUT***



Linda Copple Trout graduated in 1973 from the University of Idaho with a Bachelor of Arts degree, and in 1977 received a Juris Doctorate degree from the University of Idaho College of Law. In 1999 she received an honorary Doctor of Laws from Albertson College of Idaho. Upon graduation from law school, Justice Trout joined the Lewiston law firm of Blake, Feeney & Clark, where she was engaged in the private practice of law for six years.

In 1983, Justice Trout was appointed to the position of Magistrate Judge. From 1987 through 1991, she assumed additional responsibilities as the Acting Trial Court Administrator for the five counties included in the Second Judicial District. In 1990, she was elected a District Judge, and handled cases in Nez Perce and Clearwater counties. In August of 1992, she was appointed by Governor Cecil Andrus to be the first woman justice on the Idaho Supreme Court. She was elected by the Supreme Court to the position of Chief Justice for a four year term beginning February 1, 1997, and was reelected to a second term ending September 1, 2004.

Justice Trout is a member of the Idaho State Bar Association, and the American Inns of Court. She has previously served on the Board of Directors of the Lewiston City Library, the Northwest Children's Home, the Lewiston YWCA, plus a number of statewide administrative, judicial and bar committees, and has taught courses at the University of Idaho College of Law in family law. Justice Trout currently chairs the Idaho Supreme Court's Judicial Education Committee.

United States Supreme Court Chief Justice, William H. Rehnquist, appointed Justice Trout to the Judicial Conference Committee on Federal and State Jurisdiction in 2001, for a three-year term, and she was reappointed for an additional three-year term in 2004.

Salary: \$104,168.00

Term Expires: January 2009

**IDAHO SUPREME
COURT JUSTICE
DANIEL T. EISMANN**

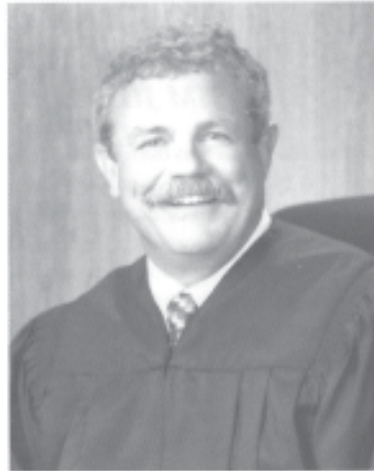


Justice Eismann was raised in Owyhee County and graduated in 1965 from Vallivue High School near Caldwell, Idaho. He enrolled at the University of Idaho, and in 1967 he left the University to enlist in the United States Army. He served two consecutive tours of duty in Vietnam where, as a crew chief/door gunner on a Huey gunship, he was awarded two purple hearts for being wounded in combat and three medals for heroism. After being honorably discharged from the military, he returned to the University of Idaho where he received his undergraduate degree and then graduated *cum laude* from law school in 1976. Upon graduating from law school, he was a law clerk for Justice Donaldson of the Idaho Supreme Court, and then practiced law in Owyhee and Canyon Counties for nine years. In 1986 he was appointed as the Magistrate Judge in Owyhee County, in 1995 Governor Batt appointed him as a district judge in Ada County, and three years later his fellow district judges elected him as the Administrative District Judge for the Fourth Judicial District. In 2000, Justice Eismann was elected by the people of Idaho to the Idaho Supreme Court, where he began serving on January 2, 2001. While serving as a district judge, Justice Eismann became convinced that there must be a more effective way of dealing with drug addicts in the criminal justice system. Upon hearing about a drug court in California, he began investigating that alternative. Later in the year, he chaired a committee to seek funding to create a drug court in Ada County and to organize that drug court. In 1998 Ada County was awarded a federal grant, and in February 1999 the drug court began. Justice Eismann presided over that drug court until just prior to taking office as a Justice of the Idaho Supreme Court. The Ada County Drug Court is proving effective in getting addicts off drugs so that they can rebuild their family relationships and become productive members of the community. Justice Eismann has had a long interest in trying to improve the criminal justice system and the legal system. As a magistrate judge, Justice Eismann was a member of the Region III Council for Children and Youth; he helped create Children's Voices, Inc., an organization to recruit, train, and oversee guardians ad litem to represent the interests of neglected and abused children in court proceedings; he organized and served upon a community diversion board in Canyon County to handle outside the judicial system first-time juvenile offenders who committed minor crimes; and he chaired the Canyon County Juvenile Justice Task Force. While both a magistrate and district judge, Justice Eismann served eight years on the Bar Exam Preparation Committee for the Idaho Bar Association, and he currently serves on the board of the Idaho State Bar Lawyers Assistance Program, which provides assistance to lawyers with substance abuse problems, and of the Idaho Law Foundation. While a district judge, he also served on the Ada County Domestic Violence Task Force, and he is an officer and past-president of the Boise Chapter of the Inns of Court. Over the years he has participated either as a presenter or a panelist in numerous educational programs for judges and attorneys and has served on several Supreme Court committees. He also chairs the Civil Rules Committee, the Criminal Jury Instructions Committee, and the statewide Drug Court Coordinating Committee. In 1982, Justice Eismann married Sheila Wood, and they have a teenage son and two adult daughters.

Salary: \$104,168.00

Term Expires: January 2007

**IDAHO SUPREME
COURT JUSTICE
ROGER S. BURDICK**



Justice Burdick received his Bachelor's of Science degree from the University of Colorado and graduated from the University of Idaho School of Law with a Juris Doctorate in 1974. From 1970 to 1971, he worked as a Bank Examiner, Department of Finance in Boise Idaho. Then from 1974 to 1980, he worked with the law firm of Webb, Pike, Burton & Carlson in Twin Falls, Idaho, then as Deputy Prosecuting Attorney in Ada County, and finally as a partner with the law firm of Hart and Burdick, in Jerome, Idaho. While with Hart and Burdick from 1976 to 1980, he served as a Public Defender in Camas, Lincoln, Jerome and Gooding Counties, as well as a general law practice. In November 1980, he was elected as Prosecuting Attorney for Jerome County. From September 1981 to September 1993, he served as Magistrate Judge in Jerome County. During that time, he was appointed the first Magistrate Member of the Idaho Judicial Council, President of Idaho Magistrate Association and Chairman of Juvenile Rules Committee, as well as numerous other committees.

In September 1993, he was appointed District Judge in Twin Falls County and has served on various Idaho Supreme Court advisory committees, including Chairman of I.A.R. 32 Rules Committee. He served as the District Judge member of the Idaho Judicial Council from 1995 to 2001. He served as President of the District Judges Association from 2001 to 2003. In 2001, he was assigned to hear the nation's largest water adjudication, the Snake River Basin Adjudication.

In January 2001, he was appointed the Administrative Judge for the Fifth Judicial District. In August, 2003 he was appointed to be the fifty-third Justice of the Idaho Supreme Court by Governor Dirk Kempthorne.

Salary: \$104,168.00

Term Expires: January 2011

**IDAHO SUPREME
COURT JUSTICE
*JIM JONES***

Justice Jim Jones was born in Twin Falls, Idaho on May 13, 1942. Justice Jones attended Idaho State University in Pocatello, Idaho in 1960-1961; attended the University of Oregon in Eugene, Oregon from 1961 to 1964. Justice Jones received his Bachelor of Arts Degree in Political Science in 1964; and his Juris Doctor degree from Northwestern University School of Law, Chicago, Illinois in 1967.



Justice Jones served as an artillery officer in the U.S. Army, including a 13-month tour in Vietnam. He was promoted to captain after one year of active duty and honorably discharged in August, 1969. He received the Army Commendation Medal, Bronze Star, Air Medal with Four Oak Leaf Clusters, Vietnamese Cross of Gallantry with Bronze Star. Justice Jones served as a legislative assistant to former U.S. Senator Len B. Jordan in 1970-1972. Justice Jones served two elected four-year terms as Attorney General of the State of Idaho, 1983 to 1991. Prior to that he practiced law in Jerome. After serving as Attorney General he practiced law in Boise. He was elected to the Supreme Court in 2004.

Justice Jones is married to Boise author, Kelly Jones. They have three children: Katharine Jones, Tom Edes and Kristi MacDonald.

Salary: \$104,168.00
Term Expires: January 2011

SUPREME COURT JUSTICES 1891-2005

<i>Name/Party</i>	<i>Term of Office</i>	<i>Remarks</i>
FIRST POSITION		
Sullivan, Isaac N. (R)	1/5/1891 to 1/1/1917	Elected 1890; reelected 1892, 1898, 1904, 1910
Rice, John C. (NP)	1/1/1917 to 1/1/1923	Elected 1916
Lee, William E.	1/1/1923 to 1/17/1930	Elected 1922; reelected 1928; resigned 1/17/1930
McNaughton, W.F.(R)	1/10/1930 to 12/31/1931	Appointed to fill vacancy; resigned 12/31/1931
Leeper, Robert D. (D)	1/2/1932 to 12/19/1932	Appointed to fill vacancy; died in office
Wernette, N.D. (D)	2/10/1933 to 1/7/1935	Appointed to fill vacancy
Ailshie, James F.	1/1/1935 to 5/27/1947	Elected 1934; reelected 1940, 1946; died in office
Hyatt, Paul W.	8/30/1947 to 3/1/1949	Appointed to fill vacancy; resigned 3/1/1949
Keeton, William D.	3/30/1949 to 1/4/1959	Appointed to fill vacancy; elected 1952
Knudson, E.T.	1/5/1959 to 12/31/1965	Elected 1958; reelected 1964; resigned 12/31/1965
Spear, Clay V.	1/1/1966 to 10/21/1971	Appointed to fill vacancy; elected 1970; resigned 10/21/1971
Bakes, Robert E.	12/30/1971 to 2/1/1993	Appointed to fill vacancy; elected 1976; reelected 1982 and 1988; resigned 2/1/1993
Silak, Cathy R.	2/25/1993 to 12/31/2000	Appointed to fill vacancy; elected 5/24/1994
Eismann, Daniel T.	1/1/2001	Elected 5/23/2000
SECOND POSITION		
Huston, Joseph W. (R)	1/5/1891 to 1/7/1901	Elected 1890; reelected 1894
Stockslager, Charles (D)	1/7/1901 to 1/7/1907	Elected 1900
Stewart, George H. (R)	1/7/1907 to 9/25/1914	Elected 1906; reelected 1912; died in office
Budge, Alfred (R)	11/28/1914 to 1/3/1949	Appointed to fill vacancy; elected 1918; reelected 1924, 1930, 1936, 1942
Porter, James W.	1/3/1949 to 12/9/1959	Elected 1948; reelected 1954; died in office
Joseph J. McFadden	12/18/1959 to 9/30/1982	Appointed to fill vacancy; elected 1960; reelected 1966, 1972, 1978; resigned 9/30/1982
Huntley, Robert C., Jr.	10/1/1982 to 8/7/1989	Appointed to fill vacancy; elected 1984; resigned 8/7/1989
Boyle, Larry	8/22/1989 to 3/31/1992	Appointed to fill vacancy; elected 1990; resigned 3/31/1992
Trout, Linda Copple	9/1/1992	Appointed to fill vacancy; elected 1996, reelected 2002
THIRD POSITION		
Morgan, John T. (R)	1/5/1891 to 1/4/1897	Elected 1890
Quarles, Ralph P. (P-D)	1/4/1897 to 1/5/1903	Elected 1896
Ailshie, James F. (R)	1/5/1903 to 7/20/1914	Elected 1902; reelected 1908
Truitt, Warren (R)	9/14/1914 to 1/4/1915	Appointed to fill vacancy

Morgan, William M. (NP)	1/4/1915 to 1/3/1921	Elected 1914
Dunn, Robert N. (R)	1/3/1921 to 1/17/1925	Elected 1920; died in office
Taylor, Herman H. (R)	1/3/1925 to 2/22/1929	Appointed to fill vacancy; elected 1926; died in office
Varian, Bertram S. (R)	3/4/1929 to 1/2/1933	Appointed to fill vacancy
Morgan, William M. (D)	1/2/1933 to 10/16/1942	Elected 1932; reelected 1938; died in office
Dunlap, S. Ben	12/31/1942 to 1/1/1945	Appointed to fill vacancy
Miller, Bert H.	1/1/1945 to 12/21/1948	Elected 1944; resigned 12/21/1948
Taylor, C.J.	3/30/1949 to 1/6/1969	Appointed to fill vacancy; elected 1950, reelected 1956, 1962
Donaldson, Charles R.	1/6/1969 to 10/9/1987	Elected 1968; reelected 1974, 1980, 1986; died in office
Johnson, Byron	2/1/1988 to 1/3/99	Appointed to fill vacancy; elected 1992
Kidwell, Wayne	1/4/1999 to 12/31/04	Elected 1998
Jones, Jim	1/3/2005	Elected 2004

FOURTH POSITION*

McCarthy, Charles P. (R)	1/3/1921 to 1/5/1925	Elected 1920
Givens, Raymond L. (R)	1/5/1925 to 1/3/1955	Elected 1924; reelected 1930, 1936, 1942, 1948
Anderson, Donald B.	1/3/1955 to 12/16/1956	Elected 1954; died in office
McQuade, Henry F.	12/22/1956 to 3/17/1976	Appointed to fill vacancy; elected 1960; reelected 1966, 1972; resigned 3/17/1976
Bistline, Stephen	5/20/1976 to 12/1/1994	Appointed to fill vacancy; elected 1978; reelected 1984, 1990; resigned 12/1/1994
Schroeder, Gerald F.	1/20/1995	Appointed to fill vacancy; elected 1996; reelected 2002

FIFTH POSITION*

Lee, William A. (R)	1/3/1921 to 9/7/1926	Elected 1920; died in office
Lee, T. Bailey (R)	10/4/1926 to 1/2/1933	Appointed to fill vacancy; elected 1926
Holdon, Edwin M.	1/2/1933 to 7/17/1950	Elected 1932; reelected 1938, 1944
Thomas, Darwin W.	1/1/1951 to 11/22/1954	Elected 1950; died in office
Smith, E.B.	12/10/1954 to 1/6/1969	Appointed to fill vacancy; elected 1956; reelected 1962
Shepard, Allan G.	1/6/1969 to 5/27/1989	Elected 1968; reelected 1974, 1980; 1986; died in office
McDevitt, Chas. F.	8/31/1989 to 8/31/1997	Appointed to fill vacancy; elected 1992; resigned 8/31/97
Walters, Jesse R.	9/2/1997 to 7/31/2003	Appointed to fill vacancy; elected 1998; resigned 7/31/2203
Burdick, Roger S.	8/1/2003	Appointed to fill vacancy; elected 2004

* Fourth and fifth positions were added to the Supreme Court by constitutional amendment in 1920.

Note: Judges were elected on nonpartisan ballots from 1913 to 1918, and from 1934 to date.

Court of Appeals Judges 1982-2005

Created in 1980, funded in 1981, and began operation on January 4, 1982

First Position

Walters, Jesse R.

Term of Office,

Appointed 01/04/1982, elected 1984, reelected 1984, 1990 and 1996; appointed to Idaho Supreme Court 09/02/1997

Schwartzman, Alan

Appointed 10/02/1997 to fill vacancy; resigned 01/15/2002.

Gutierrez, Sergio A.

Appointed January 16, 2002 to fill vacancy; elected 2002.

Second Position

Burnett, Donald

Appointed 01/04/1982, elected 1986, resigned 01/16/1990

Silak, Cathy R.

Appointed 09/01/1990 to fill vacancy; elected 1992; appointed to Idaho Supreme Court 02/25/1993

Lansing, Karen

Appointed 06/07/1993 to fill vacancy; elected 1998; reelected 2004

Third Position

Swanstrom, Roger

Appointed 01/04/1982, elected 1988, resigned 01/31/1993

Perry, Darrel R.

Appointed 08/06/1993; elected 1994, reelected 2000

IDAHO COURT OF APPEALS

CHIEF JUDGE

DARREL R. PERRY

Judge Perry was born September 18, 1954, attended school in Pocatello and graduated from Pocatello High School in 1972. Graduated from the University of Idaho in 1976 with a double major in Economics and Political Science, and received his Juris Doctor degree in 1979. Worked for the Lewiston firm of Knowlton and Miles before being appointed Magistrate for the Second Judicial District effective January 1, 1982. Taught Business Law & Economics through the Continuing Education Dept. at Lewis Clark State College. Appointed to the Court of Appeals in July 1993. He has two daughters, Katie and Natalie.

Salary: \$103,168.00 Term Expires: January 2007



JUDGE

KAREN L. LANSING

Judge Lansing was born at Kendrick, Idaho on June 23, 1950, graduated from Orofino High School in 1968, received B.A. degree in Political Science from the University of Idaho in 1972. She was employed by the Idaho Personnel Commission as a personnel analyst in 1972 and 1973, and served as a planner in the Idaho State Planning Agency from 1973 to 1975. Judge Lansing received a Juris Doctor degree from the University of Washington in 1978. She served as an assistant city attorney for the City of Boise in 1978 and 1979. She joined the Boise-based law firm of Hawley, Troxell, Ennis & Hawley in 1979, becoming a partner in 1985. Appointed to the Court of Appeals in June 1993.

Salary: \$103,168.00 Term Expires: January 2011



JUDGE

SERGIO A. GUTIERREZ

Judge Gutierrez is married to the former Mary Cuevas. They have four children, a foster son and two grandchildren. He is a graduate from Job Corps, where he obtained his G.E.D. He received a B.A. degree in Elementary Education from Boise State University. He attended Hastings Law School, University of California, where he obtained his Juris Doctor degree. His law practice experience includes employment with Idaho Legal Aid Services, Inc., with the firm of Park, Costello and Burkett and operating a solo practice. He served as District Judge from 1993 to 2002. He was appointed to the Court of Appeals in January 2002 and elected in May 2002.

Salary: \$103,168.00 Term Expires: January 2009



ADMINISTRATIVE DISTRICT JUDGES

First Judicial District

Charles W. Hosack
PO Box 9000
Coeur d'Alene, Idaho 83816-9000

Second Judicial District

John Stegner
Latah County Courthouse
P.O. Box 8068
Moscow, Idaho 83843

Third Judicial District

James C. Morfitt
1115 Albany
Caldwell, ID 83605

Fourth Judicial District

Darla S. Williamson
Ada County Courthouse
200 West Front
Boise, Idaho 83702-7300

Fifth Judicial District

R. Barry Wood
PO Box 27
Gooding, Idaho 83308

Sixth Judicial District

N. Randy Smith
PO Box 4165
Pocatello, Idaho 83201

Seventh Judicial District

James C. Herndon
Bingham County Courthouse
501 N. Maple #310
Blackfoot, Idaho 83221

TRIAL COURT ADMINISTRATORS

First Judicial District

Debra Heise (Acting TCA)
Bonner County Courthouse
215 South 1st Avenue
Sandpoint, Idaho 83864

Second Judicial District

Steven Caylor
Nez Perce County Courthouse
P.O. Box 896
Lewiston, Idaho 83501

Third Judicial District

Dan Kessler
Canyon County Courthouse
1115 Albany
Caldwell, Idaho 83605

Fourth Judicial District

Larry Reiner
Ada County Courthouse
200 W. Front Street
Boise, Idaho 83702-7300

Fifth Judicial District

Linda Wright
Twin Falls County Courthouse
427 Shoshone Street North
PO Box 126
Twin Falls, Idaho 83303-0126

Sixth Judicial District

Suzanne H. Johnson
Bannock County Courthouse
PO Box 4847
Pocatello, Idaho 83205

Seventh Judicial District

Burton W. Butler
Bonneville County Courthouse
605 North Capital Avenue
Idaho Falls, Idaho 83402

DISTRICT COURT JUDGES

First Judicial District

Charles W. Hosack, <i>Administrative Judge</i>	P.O. Box 9000, Coeur d'Alene 83816-9000
Fred M. Gibler	PO Box 527, Wallace 83873
John P. Luster	PO Box 9000, Coeur d'Alene 83816-9000
Steve Verby	215 South 1st Avenue, Sandpoint 83864
John T. Mitchell	P.O. Box 9000, Coeur d'Alene 83816-9000

Second Judicial District

John R. Stegner, <i>Administrative Judge</i>	P.O. Box 8068, Moscow 83843
Jeff M. Brudie	P.O. Box 896, Lewiston 83501
Carl B. Kerrick	P.O. Box 896, Lewiston 83501
John Bradbury	Idaho County Courthouse, Grangeville 83530

Third Judicial District

James C. Morfitt, <i>Administrative Judge</i>	1115 Albany, Caldwell 83605
Gregory M. Culet	1115 Albany, Caldwell 83605
Stephen W. Drescher	PO Box 670, Weiser 83672
Rena Hoff	1115 Albany, Caldwell 83605
Juneal Kerrick	1115 Albany, Caldwell 83605

Fourth Judicial District

Darla S. Williamson, <i>Administrative Judge</i>	200 W. Front, Boise 83702-7300
Deborah A. Bail	200 W. Front, Boise 83702-7300
Cheri C. Copsey	200 W. Front, Boise 83702-7300
Joel D. Horton	200 W. Front, Boise 83702-7300
Michael R. McLaughlin	200 W. Front, Boise 83702-7300
Thomas F. Neville	200 W. Front, Boise 83702-7300
Kathryn A. Sticklen	200 W. Front, Boise 83702-7300
Mike Wetherell	200 W. Front, Boise 83702-7300
Ronald J. Wilper	200 W. Front, Boise 83702-7300

Fifth Judicial District

R. Barry Wood, <i>Administrative Judge</i>	P.O. Box 27, Gooding 83330
Monte B. Carlson	1459 Overland Ave, Burley 83318
John K. Butler	300 N. Lincoln, Jerome 83338
Robert Elgee	201 2nd Avenue S., Ste 110, Hailey 83333
John C. Hohnhorst	P.O. Box 126, Twin Falls 83303-0126
John M. Melanson	P.O. Box 2707, Twin Falls 83303-2707
G. Richard Bevan	P.O. Box 126, Twin Falls 83303-0126

Sixth Judicial District

N. Randy Smith, <i>Administrative Judge</i>	P.O. Box 4165, Pocatello 83205
Don L. Harding	159 South Main, Soda Springs 83276
Peter D. McDermott	P.O. Box 4131, Pocatello 83205
Ronald E. Bush	P.O. Box 4126, Pocatello 83205

Seventh Judicial District

James C. Herndon, <i>Administrative Judge</i>	501 N. Maple #310, Blackfoot 83221
Gregory S. Anderson	605 N. Capital Avenue, Idaho Falls 83402
Brent Moss	P.O. Box 389, Rexburg 83440

John Shindurling
Richard T. St. Clair

605 N. Capital Avenue, Idaho Falls 83402
605 N. Capital Avenue, Idaho Falls 83402

JUDGES OF THE MAGISTRATE DIVISION

FIRST JUDICIAL DISTRICT

Benewah

Patrick McFadden 701 College Avenue, St Maries 83861

Bonner

Penny Friedlander 215 South 1st Avenue, Sandpoint 83864

Barbara A. Buchanan 215 South 1st Avenue, Sandpoint 83864

Debra A. Heise 215 South 1st Avenue, Sandpoint 83864

Boundary

Justin Julian Box 419, Bonners Ferry 83805

Kootenai

Robert Burton P.O. Box 9000, Coeur d'Alene 83816-9000

Eugene Marano P.O. Box 9000, Coeur d'Alene 83816-9000

Benjamin Simpson P.O. Box 9000, Coeur d'Alene 83816-9000

Barry E. Watson P.O. Box 9000, Coeur d'Alene 83816-9000

Scott Wayman P.O. Box 9000, Coeur d'Alene 83816-9000

Shoshone

Daniel J. McGee 700 Bank Street, Wallace 83873

SECOND JUDICIAL DISTRICT

Clearwater

Orin L. (Lee) Squire Box 586, Orofino 83544

Idaho

Michael J. Griffin Courthouse, Grangeville 83530

Latah

William C. Hamlett Box 8068, Moscow 83843

Lewis

Stephen L. Calhoun PO Box 39, Nezperce 83543

Nez Perce

Jay P. Gaskill P.O. Box 896, Lewiston 83501

Gregory K. Kalbfleisch P.O. Box 896, Lewiston 83501

Kent J. Merica P.O. Box 896, Lewiston 83501

THIRD JUDICIAL DISTRICT

Adams

James C. Peart P.O. Box 48, Council 83612

Canyon

Gary DeMeyer 1115 Albany, Caldwell 83605

Bradly S. Ford 1115 Albany, Caldwell 83605

Debra A. Orr 120 9th Avenue South, Nampa 83651

Frank Kotyk 1115 Albany, Caldwell 83605

James A. (J.R.) Schiller 1115 Albany, Caldwell 83605

Robert M. Taisey, Jr. 1115 Albany, Caldwell 83605

Gem
Gordon W. Petrie 415 East Main, Emmett 83617

Owyhee
Thomas J. Ryan P.O. Box 128, Murphy 83650

Payette
William B. Dillon III 1130 3rd Avenue North, Payette 83661
A. Lynne Krogh 1130 3rd Avenue North, Payette 83661

Washington
Gregory F. Frates 485 East 3rd Street, Weiser 83672

FOURTH JUDICIAL DISTRICT

Ada
Christopher M. Bieter 200 W Front, Boise 83702-7300
Russell A. Comstock 200 W. Front, Boise 83702-7300
David E. Day 200 W. Front, Boise 83702-7300
R. Michael Dennard 200 W. Front, Boise 83702-7300
James Cawthon 200 W. Front, Boise 83702-7300
Michael Oths 200 W. Front, Boise 83702-7300
Timothy L. Hansen 200 W. Front, Boise 83702-7300
Charles L. Hay 200 W. Front, Boise 83702-7300
Terry R. McDaniel 200 W. Front, Boise 83702-7300
Carolyn M. Minder 200 W. Front, Boise 83702-7300
Thomas R. Morden 200 W. Front, Boise 83702-7300
Richard A. Schmidt 200 W. Front, Boise 83702-7300
John C. Vehlow 200 W. Front, Boise 83702-7300
Thomas P. Watkins 200 W. Front, Boise 83702-7300
L. Kevin Swain 200 W. Front, Boise 83702-7300

Boise
Roger Cockerille P.O. Box 126, Idaho City 83631

Elmore
David C. Epis 150 S. 4th East, Mtn. Home 83647
John R. Sellman 150 S. 4th East, Mtn. Home 83647

Valley
Henry R. Boomer P.O. Box 1350, Courthouse, Cascade 83611

FIFTH JUDICIAL DISTRICT

Blaine
R. Ted Israel 201 2nd Avenue South Suite 106, Hailey 83333

Camas
John F. Varin Courthouse, Box 430, Fairfield 83327

Cassia
Michael R. Crabtree Courthouse, 1459 Overland Ave., Burley 83318
Rick L. Bollar Courthouse, 1459 Overland Ave., Burley 83318

Gooding
Casey U. Robinson Box 477, Gooding 83330

Jerome
Thomas H. Borresen 300 N Lincoln, Rm 310, Jerome 83338

Lincoln
Mark A. Ingram P.O. Drawer A, Shoshone 83352

Minidoka
Larry R. Duff P.O. Box 368, Rupert 83350

Twin Falls

Charles P. Brumbach	P.O. Box 126, Twin Falls 83303-0126
Howard Smyser	P.O. Box 126, Twin Falls 83303-0126
Randy J. Stoker	P.O. Box 126, Twin Falls 83303-0126

SIXTH JUDICIAL DISTRICT

Bannock

Gaylen L. Box	P.O. Box 4847, Pocatello 83205
Rick Carnaroli	P.O. Box 4847, Pocatello 83205
Robert C. Naftz	P.O. Box 4847, Pocatello 83205
Bryan K. Murray	P.O. Box 4847, Pocatello 83205
Boyd B. White, II	P.O. Box 4847, Pocatello 83205

Bear Lake

O. Lynn Brower	P.O. Box 190, Paris 83261
----------------	---------------------------

Caribou

Ronald J. Hart	P.O. Box 775, Soda Springs 83276
----------------	----------------------------------

Franklin

Eric Hunn	39 West Oneida, Preston 83263
-----------	-------------------------------

Oneida

David L. Evans	10 Court Street, Malad 83252
----------------	------------------------------

Power

Mark A. Beebe	543 Bannock, American Falls 83211
---------------	-----------------------------------

SEVENTH JUDICIAL DISTRICT

Bingham

Ryan W. Boyer	501 N. Maple #402, Blackfoot 83221-1700
Scott H. Hansen	501 N. Maple #402, Blackfoot 83221-1700

Bonneville

Earl Blower	605 North Capital, Idaho Falls 83402
Linda J. Cook	605 North Capital, Idaho Falls 83402
L. Mark Riddoch	605 North Capital, Idaho Falls 83402

Butte

Ralph Savage	P.O. Box 171, Arco 83213
--------------	--------------------------

Clark

William P. Hollerich	P.O. Box 205, Dubois 83423
----------------------	----------------------------

Custer

Charles L. Roos	P.O. Box 385, Challis 83226
-----------------	-----------------------------

Fremont

Keith M. Walker	151 W. 1st North, St Anthony 83445
-----------------	------------------------------------

Jefferson

Michael B. Kennedy	P.O. Box 71, Rigby 83442
--------------------	--------------------------

Lemhi

Jerry R. Meyers	206 Courthouse Drive, Salmon 83467
-----------------	------------------------------------

Madison

Mark S. Rammell	P.O. Box 389, Rexburg 83440
-----------------	-----------------------------

Teton

Colin W. Luke	89 North Main, Suite 5, Driggs 83422-5141
---------------	---