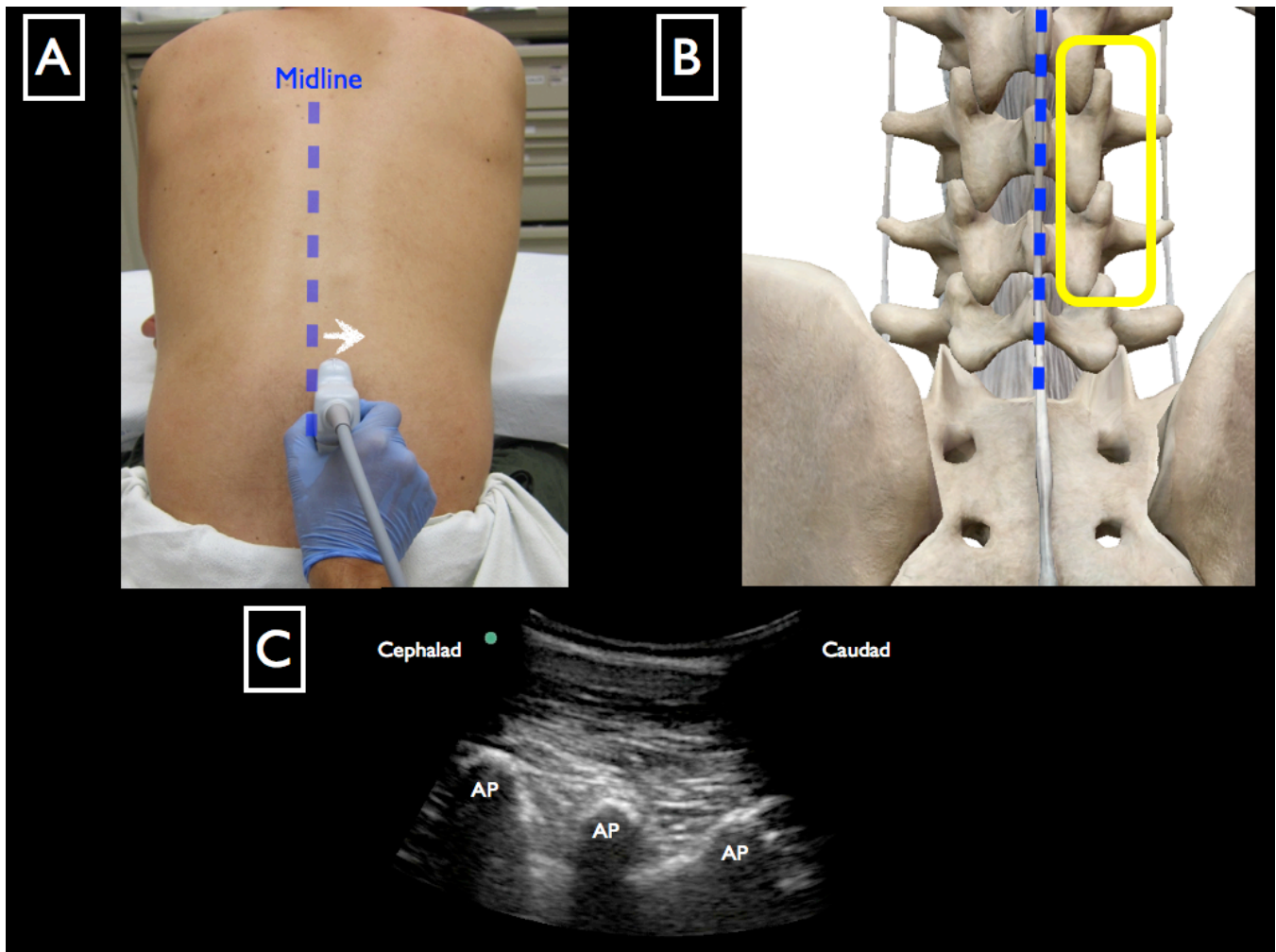


Ultrasound-Assisted Lumbar Puncture

*Highland General Hospital
Division of Emergency Ultrasound*

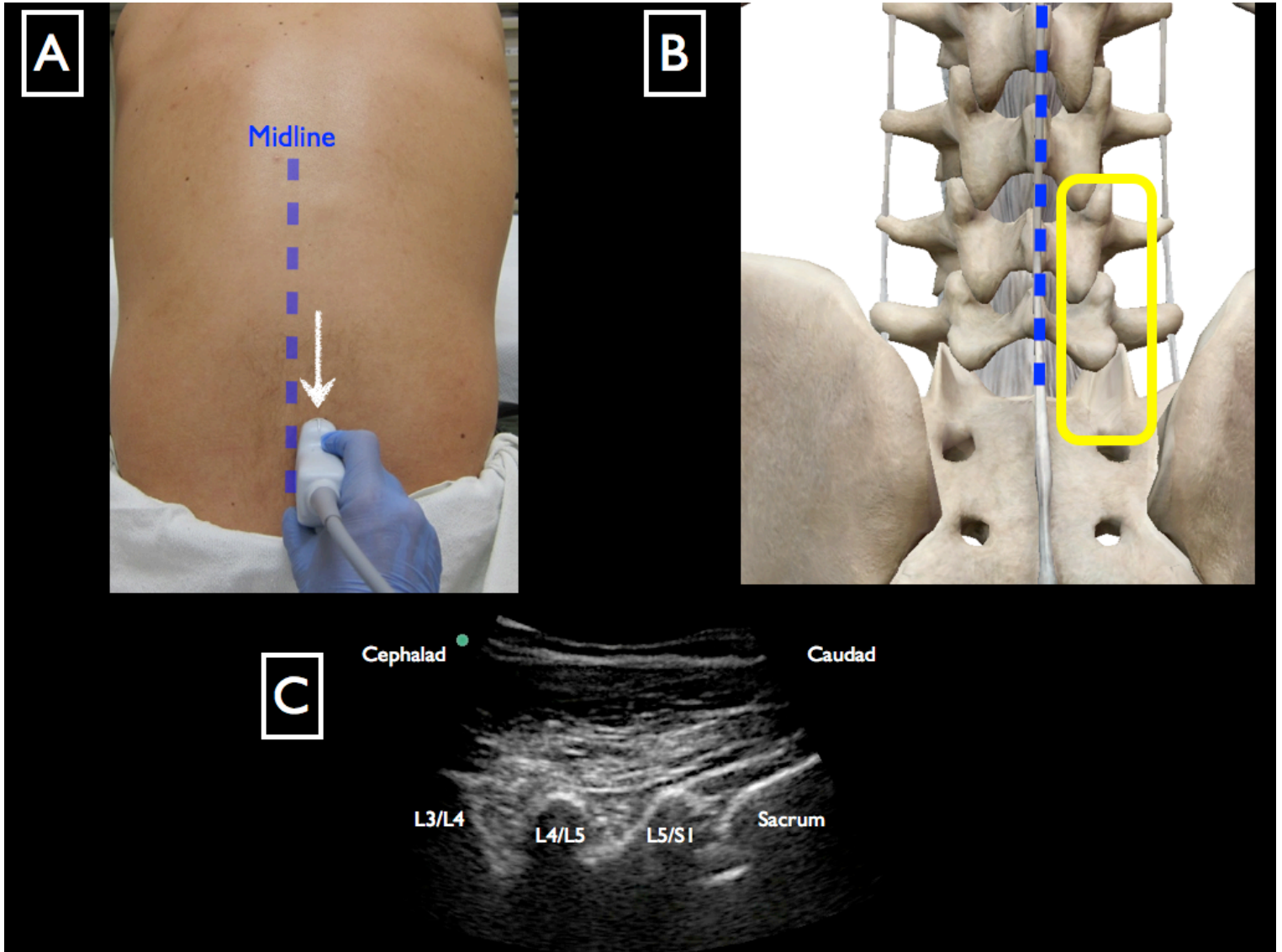
Step 1

- Curvilinear transducer pointing cephalad
- Slide transducer just off midline
- Visualize articular processes or “humps”



Step 2

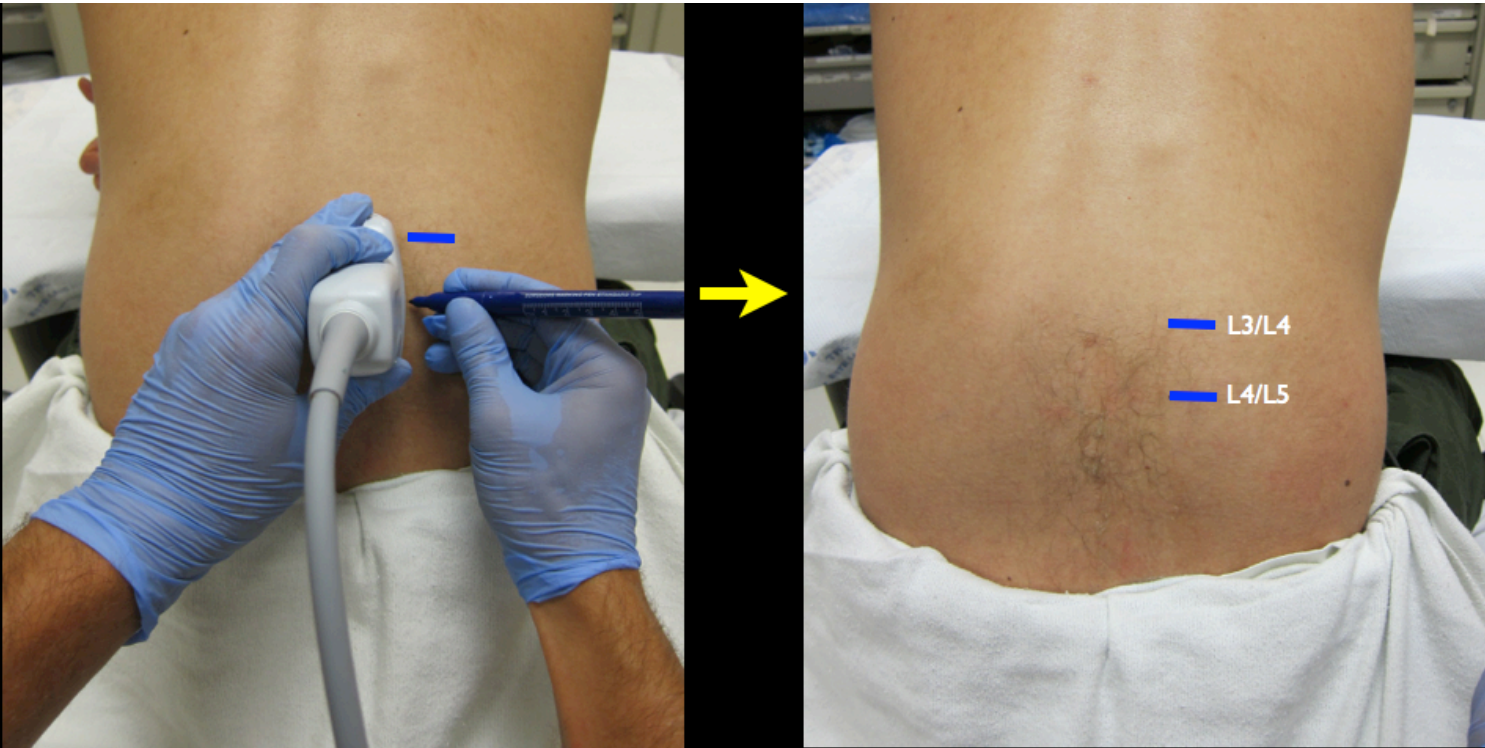
- Slide transducer caudal until the **sacrum** is visualized
- Note the L5/S1, L4/L5 and L3/L4 interspaces



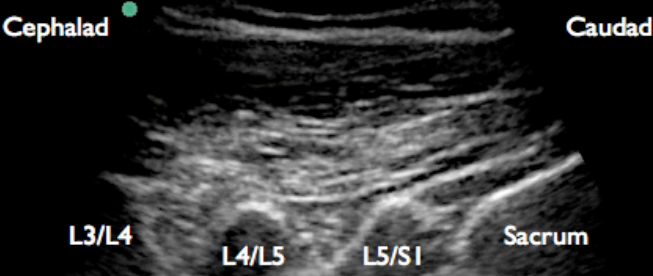
Step 3

-Mark the L3/L4 and L4/L5 interspace

A



B



Step 4

- Rotate probe marker to patient's left
- Locate bony midline

