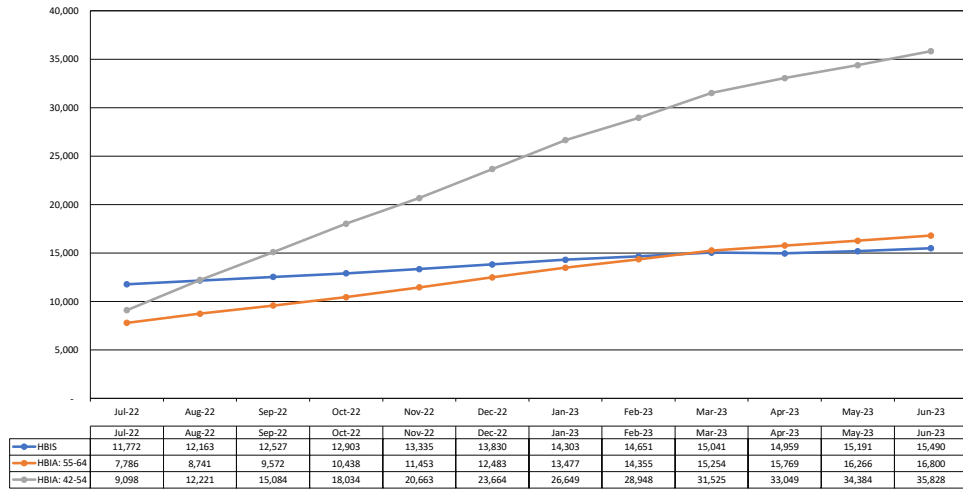


HBIA - HBIS Program - FY23 Dashboard

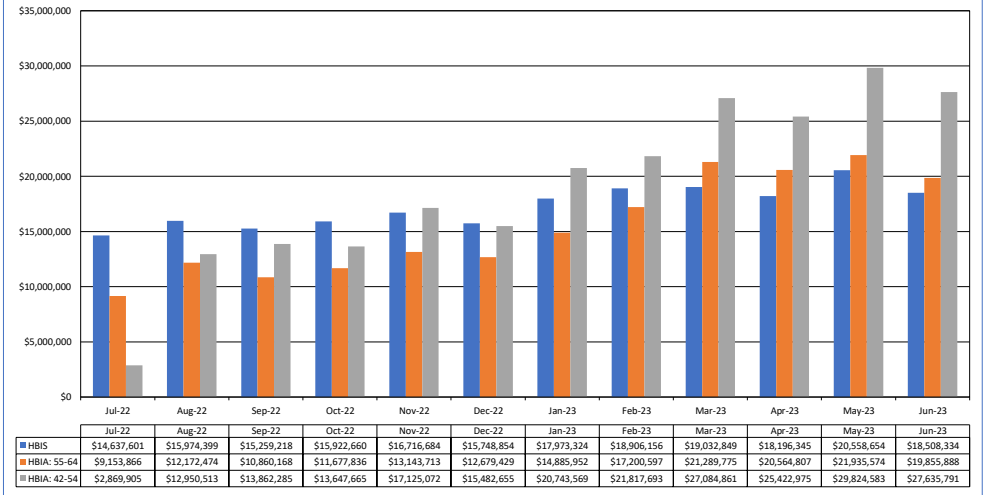
The following FY23 data is an analysis completed by HFS for the following programs: Health Benefits for Immigrant Seniors 65+, Health Benefits for Immigrant Adults ages 55 - 64, and Health Benefits for Immigrant Adults ages 42 - 54. The purpose of this analysis is to present the programs' enrollment and liability data to stakeholders and the public in a more consumer-friendly way.

FY23 Monthly Enrollment by Program



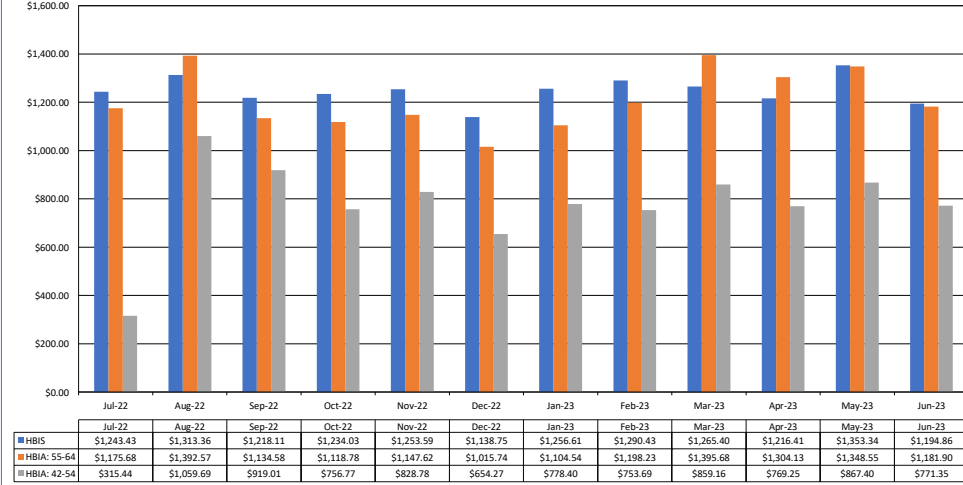
*Point in time enrollment. Data run as of 08/15/23
 *Data will change depending on when it is refreshed

FY23 Monthly Cost by Program



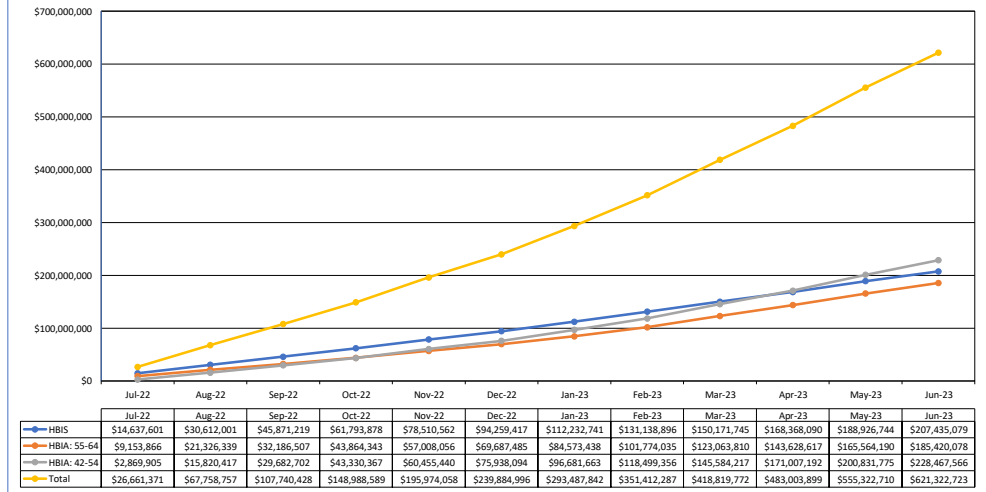
*Liability reported in the month claims were approved for payment by HFS

FY23 Avg. Monthly Cost Per Participant



*Liability reported in the month claims were approved for payment by HFS (DCN date)
 *avg. cost represents DCN date liability for the month divided by total enrollment for that month

FY23 Total Cost by Program



*Displayed numbers are cumulative for the fiscal year through the listed month