

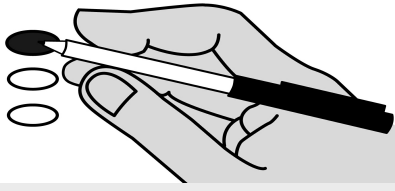
# Official Ballot

Pacific County, Washington  
General Election - November 5, 2024

Precinct  
SAMPLE SAMPLE 10

## Instructions

### How to vote

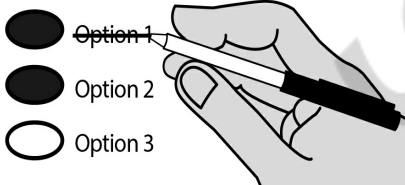


Use a blue or black ink pen to fill in the oval to the left of your choice.

Vote for one in each race.

If you vote for more than one, no votes will be counted for that race.

### If you make a mistake



Draw a line through the entire measure response or candidate's name.

Then you may make another choice.

### Optional write-in



To vote for a candidate not listed for that race, fill in the oval to the left of the line and print the name of the candidate.

### Who donates to campaigns?

View information on financial contributors for federal candidates:

#### Federal Election Commission

[www.fec.gov](http://www.fec.gov)  
Toll Free 1 (800) 424-9530

View financial contributors for candidates and measures:

#### Public Disclosure Commission

[www.pdc.wa.gov](http://www.pdc.wa.gov)  
Toll Free 1 (877) 601-2828

**Note: This sample ballot contains all races on the Pacific County November 5, 2024 General ballot. Your ballot will only include races in which you are entitled to vote upon.**

## Initiatives to the People

### Initiative Measure No. 2066

Initiative Measure No. 2066 concerns regulating energy services, including natural gas and electrification. This measure would repeal or prohibit certain laws and regulations that discourage natural gas use and/or promote electrification, and require certain utilities and local governments to provide natural gas to eligible customers.

Should this measure be enacted into law?

- Yes  
 No

## Initiatives to the Legislature

### Initiative Measure No. 2109

Initiative Measure No. 2109 concerns taxes. This measure would repeal an excise tax imposed on the sale or exchange of certain long-term capital assets by individuals who have annual capital gains of over \$250,000. This measure would decrease funding for K-12 education, higher education, school construction, early learning, and childcare.

Should this measure be enacted into law?

- Yes  
 No

### Initiative Measure No. 2117

Initiative Measure No. 2117 concerns carbon tax credit trading. This measure would prohibit state agencies from imposing any type of carbon tax credit trading, and repeal legislation establishing a cap and invest program to reduce greenhouse gas emissions. This measure would decrease funding for investments in transportation, clean air, renewable energy, conservation, and emissions-reduction.

Should this measure be enacted into law?

- Yes  
 No

## Initiative Measure No. 2124

Initiative Measure No. 2124 concerns state long term care insurance. This measure would provide that employees and self-employed people must elect to keep coverage under RCW 50B.04 and could opt-out any time. It would also repeal a law governing an exemption for employees. This measure would decrease funding for Washington's public insurance program providing long-term care benefits and services.

Should this measure be enacted into law?

- Yes  
 No

## Federal - Partisan Offices

### President/Vice President

- Kamala D. Harris / Tim Walz  
*Democratic Party Nominees*
- Donald J. Trump / JD Vance  
*Republican Party Nominees*
- Robert F. Kennedy Jr. / Nicole Shanahan  
*We The People Party Nominees*
- Jill Stein / Rudolph Ware  
*Green Party Nominees*
- Claudia De la Cruz / Karina Garcia  
*Socialism and Liberation Party Nominees*
- Rachele Fruit / Dennis Richter  
*Socialist Workers Party Nominees*
- Joseph Kishore / Jerry White  
*Socialist Equality Party Nominees*
- Chase Oliver / Mike ter Maat  
*Libertarian Party Nominees*
- Cornel West / Melina Abdullah  
*Justice For All Party Nominees*
- Shiva Ayyadurai / Crystal Ellis  
*Independent Candidates*
- 

**READ: Each candidate for President and Vice President is the official nominee of a political party. For other partisan offices, each candidate may state a political party that he or she prefers. A candidate's preference does not imply that the candidate is nominated or endorsed by the party, or that the party approves of or associates with that candidate.**

### U.S. Senator

- Maria Cantwell  
*(Prefers Democratic Party)*
- Dr Raul Garcia  
*(Prefers GOP Party)*
- 

### U.S. Representative Congressional District 3

- Marie Gluesenkamp Perez  
*(Prefers Democratic Party)*
- Joe Kent  
*(Prefers Republican Party)*
- 

Vote Both Sides

**State - Partisan Offices**

**Governor**

- Bob Ferguson  
*(Prefers Democratic Party)*
- Dave Reichert  
*(Prefers Republican Party)*
- 

**Lt. Governor**

- Denny Heck  
*(Prefers Democratic Party)*
- Dan Matthews  
*(Prefers Republican Party)*
- 

**Secretary of State**

- Steve Hobbs  
*(Prefers Democratic Party)*
- Dale Whitaker  
*(Prefers Republican Party)*
- 

**State Treasurer**

- Mike Pellicciotti  
*(Prefers Democratic Party)*
- Sharon Hanek  
*(Prefers Republican Party)*
- 

**State Auditor**

- Pat (Patrice) McCarthy  
*(Prefers Democratic Party)*
- Matt Hawkins  
*(Prefers Republican Party)*
- 

**Attorney General**

- Pete Serrano  
*(Prefers Republican Party)*
- Nick Brown  
*(Prefers Democratic Party)*
- 

**Commissioner of Public Lands**

- Jaime Herrera Beutler  
*(Prefers Republican Party)*
- Dave Upthegrove  
*(Prefers Democratic Party)*
- 

**State - Nonpartisan Offices**

**Superintendent of Public Instruction**

- Chris Reykdal
- David Olson
- 

**State - Partisan Offices**

**Insurance Commissioner**

- Patty Kuderer  
*(Prefers Democratic Party)*
- Phil Fortunato  
*(Prefers Republican Party)*
- 

**Legislative - Partisan Offices**

**State Senator  
Legislative District 19**

- Jeff Wilson  
*(Prefers Republican Party)*
- Andi Day  
*(Prefers Democratic Party)*
- 

**State Representative Pos. 1  
Legislative District 19**

- Jim Walsh  
*(Prefers Republican Party)*
- Mike Coverdale  
*(Prefers Democratic Party)*
- 

**State Representative Pos. 2  
Legislative District 19**

- Joel McEntire  
*(Prefers Republican Party)*
- Terry Carlson  
*(Prefers Democratic Party)*
- 

**County - Partisan Offices**

**County Commissioner Dist. 1**

- Lisa Olsen  
*(Prefers Republican Party)*
- 

**County Commissioner Dist. 2**

- David Tobin  
*(Prefers Democratic Party)*
- Rita Cole Hall  
*(Prefers Republican Party)*
- 

**Judicial - Nonpartisan Offices**

**Supreme Court  
Justice Position 2**

- Sal Mungia
- Dave Larson
- 

**Supreme Court  
Justice Position 8**

- Steve Gonzalez
- 

**Supreme Court  
Justice Position 9**

- Sheryl Gordon McCloud
- 

**Court of Appeals, Division 2, Dist. 3  
Judge Position 1**

- Bernard F. Veljacic
- 

**Pacific/Wahkiakum Superior Court  
Judge Position 1**

- Donald J. Richter
- 

**County - Nonpartisan Offices**

**Public Utility District 2  
PUD Commissioner 2**

- Debbie Oakes
- David W. McClain
- 

**Local Measures**

**North Pacific Emergency Medical  
Services District No. 1  
Proposition No. 1  
Ambulance and Emergency Medical  
Services Funding**

The North Pacific Emergency Medical Services District No. 1 has passed Resolution 2024-716 concerning the collection of an excess levy of forty cents per thousand dollars of assessed value (\$.40/1000av), replacing the expired 2024 levy, estimated to collect not more than six hundred thousand dollars (\$600,000), against all property in Pacific County, except for that property which is within the boundaries of the Ocean Beach, Ocosta, or North River School Districts and collected in 2025 to subsidize Ambulance and emergency medical services within the North Pacific County Emergency Medical Services District #1 service area. Should this be approved:

- Yes
- No

**Vote Both Sides**