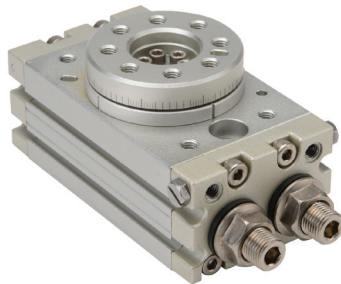




# Rotary Actuator

## Double Acting



J10MD-M

NITRA Pneumatics rotary actuators are an excellent choice for many automation applications. Available in four body sizes with or without shock absorbers. All are double acting and have an adjustable travel range from zero to 190 degrees. Anodized aluminum bodies include integral mounting slots for position switches.

### Features

- Four body sizes (10, 20, 30, 50 lb•in @ 80 psi)
- Anodized aluminum bodies
- Available with rubber bumpers or shock absorbers
- Position switch ready with integral mounting slots
- Zero to 190 degrees adjustable rotation

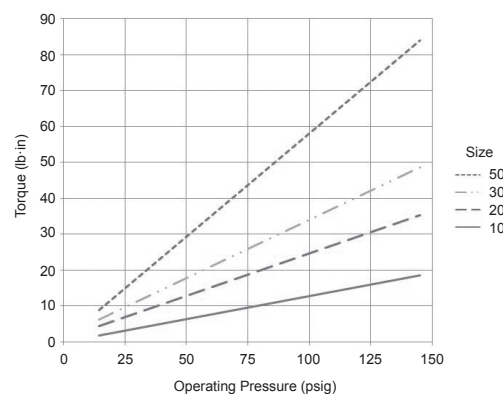


NITRA Rotary Actuators - Double Acting										
Part No.	Description	Action	Size*	Air Consumption (cc/deg)	End Stops	Body	Port(s)	Price	Weight (lbs)	
<a href="#">J10MD-M</a>	NITRA pneumatic rotary actuator	Double acting	10	0.04	Rubber bumpers	Anodized aluminum	M5 x 0.8	\$350.00	1.3	
<a href="#">J10MD-MA</a>					Shock Absorber			\$429.00	1.3	
<a href="#">J20MD-M</a>			20	0.08	Rubber bumpers			1/8in female NPT	\$398.00	2.3
<a href="#">J20MD-MA</a>					Shock Absorber				\$484.00	2.3
<a href="#">J30MD-M</a>			30	0.10	Rubber bumpers		\$429.00	3.0		
<a href="#">J30MD-MA</a>					Shock Absorber		\$520.00	3.0		
<a href="#">J50MD-M</a>			50	0.18	Rubber bumpers		\$489.00	4.9		
<a href="#">J50MD-MA</a>					Shock Absorber		\$606.00	4.9		

\* lb•in torque @ 80 psi

NITRA Rotary Actuator Specifications		
<b>Fluid</b>	Air (clean/dry)	
<b>Action</b>	Double rack and pinion (double acting)	
<b>Pressure Range</b>	<b>Bolt Adjustment</b>	14 to 145 psig (0.97 to 9.99 bar)
	<b>Shock Adjustment</b>	14 to 87 psig (0.97 to 5.99 bar)
<b>Proof Pressure</b>	175 psig	
<b>Temperature Range</b>	32°F to 140°F (0°C to 60°C)	
<b>Adjustment Angle Range</b>	0° to 190° Rotation	
<b>Repeatable Precision</b>	<b>Bolt Adjustment</b>	0.2°
	<b>Shock Adjustment</b>	0.05°
<b>Rotation Times (s/90°)</b>	<b>Bolt Adjustment</b>	0.2 - 1.0
	<b>Shock Adjustment</b>	0.2 - 0.7
<b>Cushion Type</b>	<b>Bolt Adjustment</b>	Rubber Bumper
	<b>Shock Adjustment</b>	Shock Absorber
<b>Port Size</b>	M5 x 0.8 (sizes 10 and 20) Rear ports 1/8 NPT / Side ports M5 x 0.8 (sizes 30 and 50)	
<b>Sensor Switch Compatibility</b>	Nitra CPS9C-xx-x	
<b>Includes</b>	Magnet	
<b>Approvals</b>	None	

## Torque Output



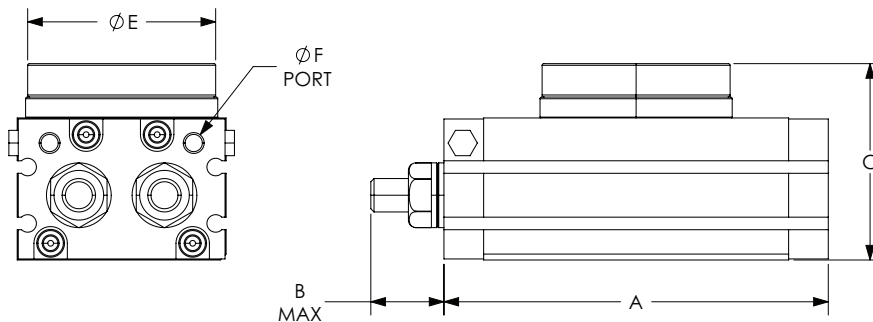
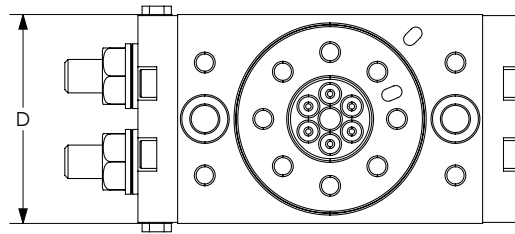
Rotary Loads				
"Loading Type (max allowed)"	J10MD-xx	J20MD-xx	J30MD-xx	J50MD-xx
<b>Radial</b>	"18lbs (80N)"	"33.7lbs (150N)"	"45lbs (200N)"	"67.4lbs (300N)"
<b>Axial</b>	"18lbs (80N)"	"33.7lbs (150N)"	"45lbs (200N)"	"67.4lbs (300N)"
<b>Bending Moment</b>	"22.1in-lbs (2.5Nm)"	"35.4in-lbs (4.0Nm)"	"48.7in-lbs (5.5Nm)"	"88.5in-lbs (10.0Nm)"



# Rotary Actuator

## Dimensions

mm [inches]



Rotary Actuator Dimensions						
Part #	A	B	C	D	ØE	ØF
<a href="#">J10MD-M</a>	92.0 [3.62]	17.5 [0.69]	47.0 [1.85]	50.0 [1.97]	45.0 [1.77]	M5 x 0.8
<a href="#">J10MD-MA</a>	92.0 [3.62]	28.5 [1.12]	47.0 [1.85]	50.0 [1.97]	45.0 [1.77]	M5 x 0.8
<a href="#">J20MD-M</a>	117.0 [4.61]	26.0 [1.02]	54.0 [2.13]	65.0 [2.56]	60.0 [2.36]	M5 x 0.8
<a href="#">J20MD-MA</a>	117.0 [4.61]	39.0 [1.54]	54.0 [2.13]	65.0 [2.56]	60.0 [2.36]	M5 x 0.8
<a href="#">J30MD-M</a>	127.0 [5.00]	25.5 [1.00]	57.0 [2.24]	70.0 [2.76]	65.0 [2.56]	1/8 NPT
<a href="#">J30MD-MA</a>	127.0 [5.00]	39.0 [1.54]	57.0 [2.24]	70.0 [2.76]	65.0 [2.56]	1/8 NPT
<a href="#">J50MD-M</a>	152.0 [5.98]	31.5 [1.24]	66.0 [2.60]	80.0 [3.15]	75.0 [2.95]	1/8 NPT
<a href="#">J50MD-MA</a>	152.0 [5.98]	51.0 [2.01]	66.0 [2.60]	80.0 [3.15]	75.0 [2.95]	1/8 NPT

See our website [www.AutomationDirect.com](http://www.AutomationDirect.com) for complete Engineering drawings.

## Accessories



[J2030M-SA](#)

NITRA Rotary Actuator Accessories			
Part No.	Description	Price	Weight (lbs)
<a href="#">J10M-SA</a>	NITRA shock absorber, for use with J-series size 10 rotary actuators.	\$43.00	0.1
<a href="#">J2030M-SA</a>	NITRA shock absorber, for use with J-series sizes 20 and 30 rotary actuators.	\$49.00	0.2
<a href="#">J50M-SA</a>	NITRA shock absorber, for use with J-series size 50 rotary actuators.	\$62.00	0.2



# Pneumatic Gripper - Parallel (Side Mount Grip)

## Double Acting



KP06MD-M

NITRA Pneumatics grippers are an excellent choice for many automation applications. They are available in both parallel and angular travels in seven different body sizes. Grippers are either double acting, single acting normally closed or single acting normally open. Anodized aluminum bodies include integral mounting slots for position switches.

### Features

- Seven sizes available (6 to 40mm bore)
- Double acting or single acting N.O. or N.C.
- Anodized aluminum bodies
- Position switch ready with integral mounting slots



NITRA Pneumatic Gripper - Parallel (Side Mount Grip) - Double Acting										
Part No.	Description	Style	Action	Size - Bore (mm)	Stroke (mm)	Grip	Body	Port(s)	Price	Weight (lbs)
<b>KP06MD-M</b>	NITRA pneumatic gripper	Parallel	Double acting	6	4	Side mount	Anodized aluminum	M3 x 0.5	\$231.00	0.1
<b>KP10MD-M</b>				10					\$249.00	0.2
<b>KP16MD-M</b>				16	6			M5 x 0.8	\$255.00	0.3
<b>KP20MD-M</b>				20	10				\$362.00	0.5
<b>KP25MD-M</b>				25	14				\$432.00	1.0
<b>KP32MD-M</b>				32	22				\$652.00	1.9
<b>KP40MD-M</b>				40	30				\$746.00	3.1

NITRA Pneumatic Gripper Specifications		
<b>Fluid</b>		Air (clean/dry)
<b>Pressure Range</b>	6mm, 10mm	29 to 101 psig (1.99 to 6.96 bar)
	16mm to 40mm	22 to 101 psig (1.52 to 6.96 bar)
<b>Proof Pressure</b>		175 psig
<b>Temperature Range</b>		-4°F to 160°F (-20°C to 60°C)
<b>Lubrication</b>		Not required
<b>Repeatability</b>	6mm to 25mm	± 0.01 mm
	32mm to 40mm	± 0.02 mm
<b>Max Frequency</b>	6mm to 25mm	180 cycles/min
	32mm to 40mm	60 cycles/min
<b>Port Size</b>		M3 x 0.5 (6 to 10mm units) M5 x 0.8 (16 to 40mm units)
<b>Sensor Switch Compatibility</b>		Nitra CPS9H-xx-x or CPS9C-xx-x
<b>Includes</b>		Magnet
<b>Approvals</b>		None



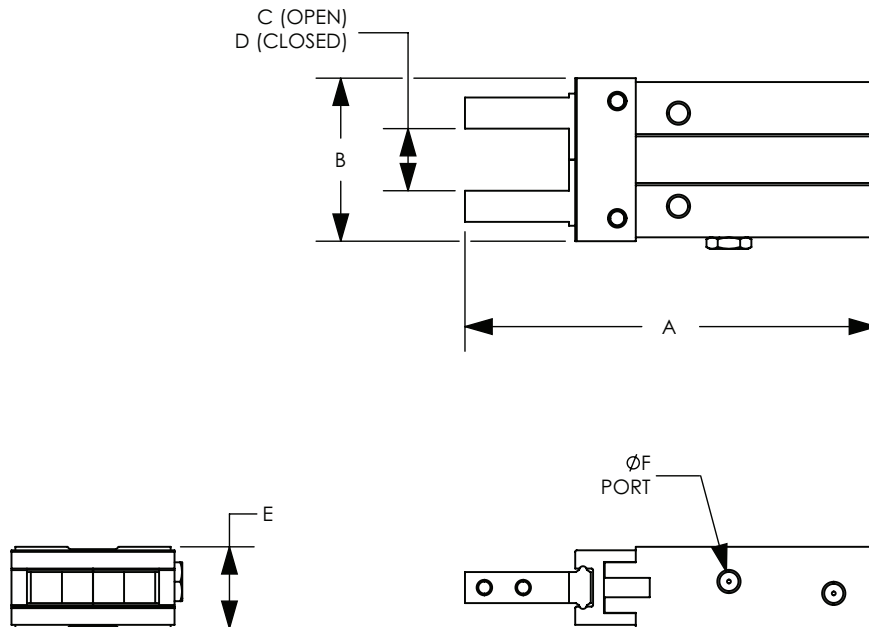
Click the above icon or scan the QR code to be taken to [www.automationdirect.com/selectors/pneumaticgripper](http://www.automationdirect.com/selectors/pneumaticgripper) for our online Gripper Configuration Tool for further selection assistance.



# Pneumatic Gripper - Parallel (Side Mount Grip)

## Dimensions

mm [inches]



Pneumatic Gripper Dimensions						
Part #	A	B	C	D	E	ØF
<b>KP06MD-M</b>	53.0 [2.09]	21.0 [0.83]	11.0 [0.43]	8.0 [0.31]	10.5 [0.41]	M3 x 0.5
<b>KP10MD-M</b>	57.0 [2.24]	30.0 [1.18]	15.5 [0.61]	11.5 [0.45]	16.5 [0.65]	M3 x 0.5
<b>KP16MD-M</b>	67.5 [2.65]	39.0 [1.54]	21.0 [0.83]	15.0 [0.59]	23.5 [0.93]	M5 x 0.8
<b>KP20MD-M</b>	84.5 [3.32]	53.0 [2.09]	26.5 [1.04]	16.5 [0.65]	27.5 [1.08]	M5 x 0.8
<b>KP25MD-M</b>	102.5 [4.04]	71.0 [2.80]	33.5 [1.31]	19.5 [0.77]	33.5 [1.32]	M5 x 0.8
<b>KP32MD-M</b>	113.0 [4.45]	106.0 [4.17]	48.0 [1.89]	26.0 [1.02]	40.0 [1.57]	M5 x 0.8
<b>KP40MD-M</b>	139.0 [5.47]	119.0 [4.70]	60.0 [2.36]	30.0 [1.18]	48.0 [1.89]	M5 x 0.8

See our website [www.AutomationDirect.com](http://www.AutomationDirect.com) for complete Engineering drawings.



# Pneumatic Gripper - Parallel (Side Mount Grip)

## Single Acting - Normally Closed



KP06MSC-M

NITRA Pneumatics grippers are an excellent choice for many automation applications. They are available in both parallel and angular travels in seven different body sizes. Grippers are either double acting, single acting normally closed or single acting normally open. Anodized aluminum bodies include integral mounting slots for position switches.

### Features

- Seven sizes available (6 to 40mm bore)
- Double acting or single acting N.O. or N.C.
- Anodized aluminum bodies
- Position switch ready with integral mounting slots



## NITRA Pneumatic Gripper - Parallel (Side Mount Grip) - Single Acting - Normally Closed

Part No.	Description	Style	Action	Size - Bore (mm)	Stroke (mm)	Grip	Body	Port(s)	Price	Weight (lbs)
<a href="#">KP06MSC-M</a>	NITRA pneumatic gripper	Parallel	Single acting, normally closed	6	4	Side mount	Anodized aluminum	M3 x 0.5	\$231.00	0.1
<a href="#">KP10MSC-M</a>				10					\$249.00	0.2
<a href="#">KP16MSC-M</a>				16	6			M5 x 0.8	\$255.00	0.3
<a href="#">KP20MSC-M</a>				20	10				\$362.00	0.5
<a href="#">KP25MSC-M</a>				25	14				\$432.00	1.0
<a href="#">KP32MSC-M</a>				32	22				\$652.00	1.9
<a href="#">KP40MSC-M</a>				40	30				\$746.00	3.1

NITRA Pneumatic Gripper Specifications		
<b>Fluid</b>	Air (clean/dry)	
<b>Pressure Range</b>	6mm, 10mm	50 to 101 psig (3.45 to 6.96 bar)
	16mm to 40mm	36 to 101 psig (2.48 to 6.96 bar)
<b>Proof Pressure</b>	175 psig	
<b>Temperature Range</b>	-4°F to 160°F (-20°C to 60°C)	
<b>Lubrication</b>	Not required	
<b>Repeatability</b>	6mm to 25mm	± 0.01 mm
	32mm to 40mm	± 0.02 mm
<b>Max Frequency</b>	6mm to 25mm	180 cycles/min
	32mm to 40mm	60 cycles/min
<b>Port Size</b>	M3 x 0.5 (6 to 10mm units) M5 x 0.8 (16 to 40mm units)	
<b>Sensor Switch Compatibility</b>	Nitra CPS9H-xx-x or CPS9C-xx-x	
<b>Includes</b>	Magnet	
<b>Approvals</b>	None	



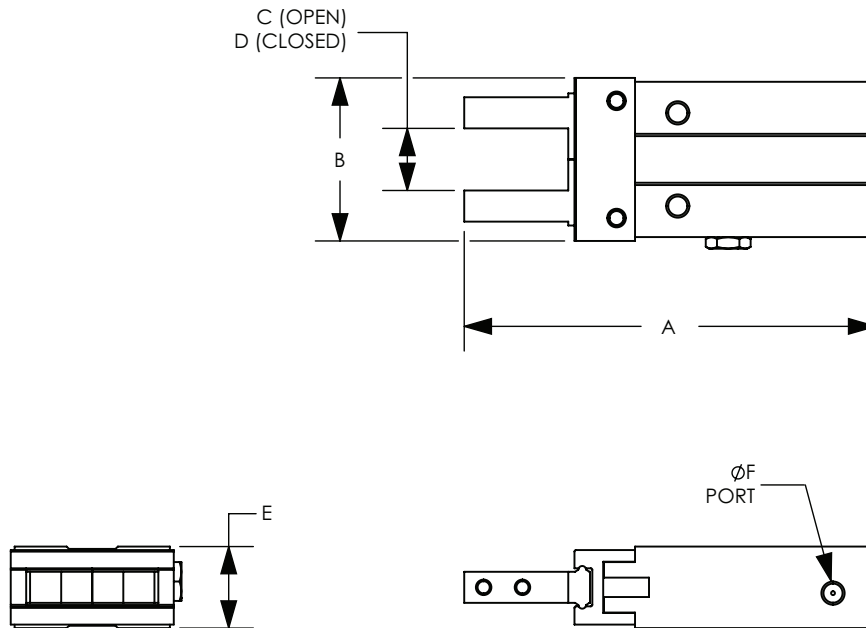
Click the above icon or scan the QR code to be taken to [www.automationdirect.com/selectors/pneumaticgripper](http://www.automationdirect.com/selectors/pneumaticgripper) for our online Gripper Configuration Tool for further selection assistance.



# Pneumatic Gripper - Parallel (Side Mount Grip)

## Dimensions

mm [inches]



Pneumatic Gripper Dimensions						
Part #	A	B	C	D	E	ØF
<b>KP06MSC-M</b>	53.0 [2.09]	21.0 [0.83]	11.0 [0.43]	8.0 [0.31]	10.5 [0.41]	M3 x 0.5
<b>KP10MSC-M</b>	57.0 [2.24]	30.0 [1.18]	15.5 [0.61]	11.5 [0.45]	16.5 [0.65]	M3 x 0.5
<b>KP16MSC-M</b>	67.5 [2.65]	39.0 [1.54]	21.0 [0.83]	15.0 [0.59]	23.5 [0.93]	M5 x 0.8
<b>KP20MSC-M</b>	84.5 [3.32]	53.0 [2.09]	26.5 [1.04]	16.5 [0.65]	27.5 [1.08]	M5 x 0.8
<b>KP25MSC-M</b>	102.5 [4.04]	71.0 [2.80]	33.5 [1.31]	19.5 [0.77]	33.5 [1.32]	M5 x 0.8
<b>KP32MSC-M</b>	122.0 [4.80]	106.0 [4.17]	48.0 [1.89]	26.0 [1.02]	40.0 [1.57]	M5 x 0.8
<b>KP40MSC-M</b>	152.0 [5.98]	119.0 [4.69]	60.0 [2.36]	30.0 [1.18]	48.0 [1.89]	M5 x 0.8

See our website [www.AutomationDirect.com](http://www.AutomationDirect.com) for complete Engineering drawings.



# Pneumatic Gripper - Parallel (Side Mount Grip)

## Single Acting - Normally Open



KP06MSA-M

NITRA Pneumatics grippers are an excellent choice for many automation applications. They are available in both parallel and angular travels in seven different body sizes. Grippers are either double acting, single acting normally closed or single acting normally open. Anodized aluminum bodies include integral mounting slots for position switches.

### Features

- Seven sizes available (6 to 40mm bore)
- Double acting or single acting N.O. or N.C.
- Anodized aluminum bodies
- Position switch ready with integral mounting slots



### NITRA Pneumatic Gripper - Parallel (Side Mount Grip) - Single Acting - Normally Open

Part No.	Description	Style	Action	Size - Bore (mm)	Stroke (mm)	Grip	Body	Port(s)	Price	Weight (lbs)
<a href="#">KP06MSA-M</a>	NITRA pneumatic gripper	Parallel	Single acting, normally open	6	4	Side mount	Anodized aluminum	M3 x 0.5	\$231.00	0.1
<a href="#">KP10MSA-M</a>				10					\$249.00	0.2
<a href="#">KP16MSA-M</a>				16	6			M5 x 0.8	\$255.00	0.3
<a href="#">KP20MSA-M</a>				20	10				\$362.00	0.5
<a href="#">KP25MSA-M</a>				25	14				\$432.00	1.0
<a href="#">KP32MSA-M</a>				32	22				\$652.00	1.9
<a href="#">KP40MSA-M</a>				40	30				\$746.00	3.1

NITRA Pneumatic Gripper Specifications		
<b>Fluid</b>		Air (clean/dry)
<b>Pressure Range</b>	6mm, 10mm	50 to 101 psig (3.45 to 6.96 bar)
	16mm to 40mm	36 to 101 psig (2.48 to 6.96 bar)
<b>Proof Pressure</b>		175 psig
<b>Temperature Range</b>		-4°F to 160°F (-20°C to 60°C)
<b>Lubrication</b>		Not required
<b>Repeatability</b>	6mm to 25mm	± 0.01 mm
	32mm to 40mm	± 0.02 mm
<b>Max Frequency</b>	6mm to 25mm	180 cycles/min
	32mm to 40mm	60 cycles/min
<b>Port Size</b>		M3 x 0.5 (6 to 10mm units) M5 x 0.8 (16 to 40mm units)
<b>Sensor Switch Compatibility</b>		Nitra CPS9H-xx-x or CPS9C-xx-x
<b>Includes</b>		Magnet
<b>Approvals</b>		None



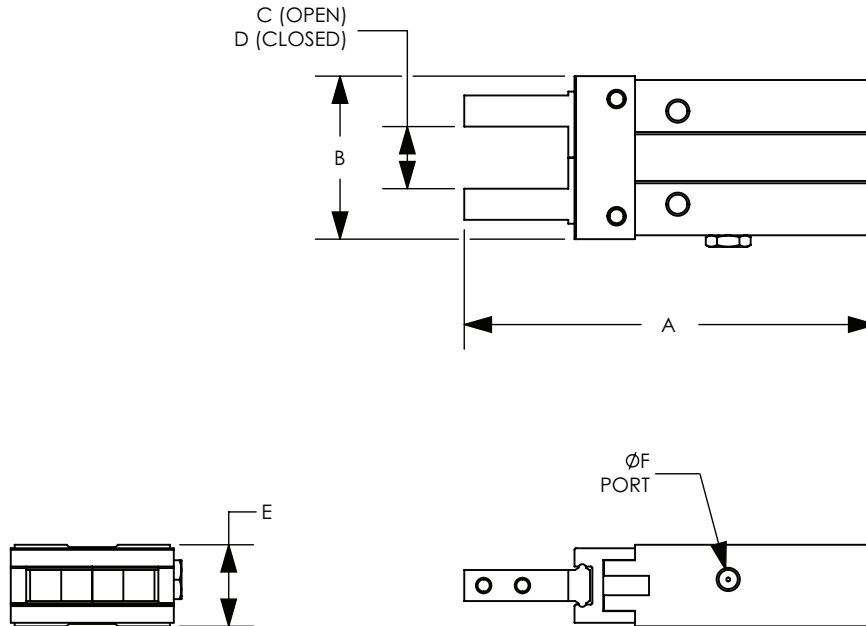
Click the above icon or scan the QR code to be taken to [www.automationdirect.com/selectors/pneumaticgripper](http://www.automationdirect.com/selectors/pneumaticgripper) for our online Gripper Configuration Tool for further selection assistance.



# Pneumatic Gripper - Parallel (Side Mount Grip)

## Dimensions

mm [inches]



Pneumatic Gripper Dimensions						
Part #	A	B	C	D	E	ØF
<b>KP06MSA-M</b>	53.0 [2.09]	21.0 [0.83]	11.0 [0.43]	8.0 [0.31]	10.5 [0.41]	M3 x 0.5
<b>KP10MSA-M</b>	57.0 [2.24]	30.0 [1.18]	15.5 [0.61]	11.5 [0.45]	16.5 [0.65]	M3 x 0.5
<b>KP16MSA-M</b>	67.5 [2.65]	39.0 [1.54]	21.0 [0.83]	15.0 [0.59]	23.5 [0.93]	M5 x 0.8
<b>KP20MSA-M</b>	84.5 [3.32]	53.0 [2.09]	26.5 [1.04]	16.5 [0.65]	27.5 [1.08]	M5 x 0.8
<b>KP25MSA-M</b>	102.5 [4.04]	71.0 [2.80]	33.5 [1.31]	19.5 [0.77]	33.5 [1.32]	M5 x 0.8
<b>KP32MSA-M</b>	122.0 [4.80]	106.0 [4.17]	48.0 [1.89]	26.0 [1.02]	40.0 [1.57]	M5 x 0.8
<b>KP40MSA-M</b>	152.0 [5.98]	119.0 [4.69]	60.0 [2.36]	30.0 [1.18]	48.0 [1.89]	M5 x 0.8

See our website [www.AutomationDirect.com](http://www.AutomationDirect.com) for complete Engineering drawings.





# Pneumatic Gripper - Parallel (End Mount Grip)

## Double Acting



KP06MD-MB

NITRA Pneumatics grippers are an excellent choice for many automation applications. They are available in both parallel and angular travels in seven different body sizes. Grippers are either double acting, single acting normally closed or single acting normally open. Anodized aluminum bodies include integral mounting slots for position switches.

### Features

- Seven sizes available (6 to 40mm bore)
- Double acting or single acting N.O. or N.C.
- Anodized aluminum bodies
- Position switch ready with integral mounting slots



NITRA Pneumatic Gripper - Parallel (End Mount Grip) - Double Acting										
Part No.	Description	Style	Action	Size - Bore (mm)	Stroke (mm)	Grip	Body	Port(s)	Price	Weight (lbs)
<a href="#">KP06MD-MB</a>	NITRA pneumatic gripper	Parallel	Double acting	6	4	End mount	Anodized aluminum	M3 x 0.5	\$231.00	0.1
<a href="#">KP10MD-MB</a>				10					\$249.00	0.2
<a href="#">KP16MD-MB</a>				16	6			\$255.00	0.3	
<a href="#">KP20MD-MB</a>				20	10			\$362.00	0.5	
<a href="#">KP25MD-MB</a>				25	14			\$432.00	1.0	
<a href="#">KP32MD-MB</a>				32	22			\$652.00	1.9	
<a href="#">KP40MD-MB</a>				40	30			\$746.00	3.1	

NITRA Pneumatic Gripper Specifications		
<b>Fluid</b>	Air (clean/dry)	
<b>Pressure Range</b>	6mm, 10mm	29 to 101 psig (1.99 to 6.97 bar)
	16mm to 40mm	22 to 101 psig (1.52 to 6.97 bar)
<b>Proof Pressure</b>	175 psig	
<b>Temperature Range</b>	-4°F to 160°F (-20°C to 60°C)	
<b>Lubrication</b>	Not required	
<b>Repeatability</b>	6mm to 25mm	± 0.01 mm
	32mm to 40mm	± 0.02 mm
<b>Max Frequency</b>	6mm to 25mm	180 cycles/min
	32mm to 40mm	60 cycles/min
<b>Port Size</b>	M3 x 0.5 (6 to 10mm units) M5 x 0.8 (16 to 40mm units)	
<b>Sensor Switch Compatibility</b>	Nitra CPS9H-xx-x or CPS9C-xx-x	
<b>Includes</b>	Magnet	
<b>Approvals</b>	None	



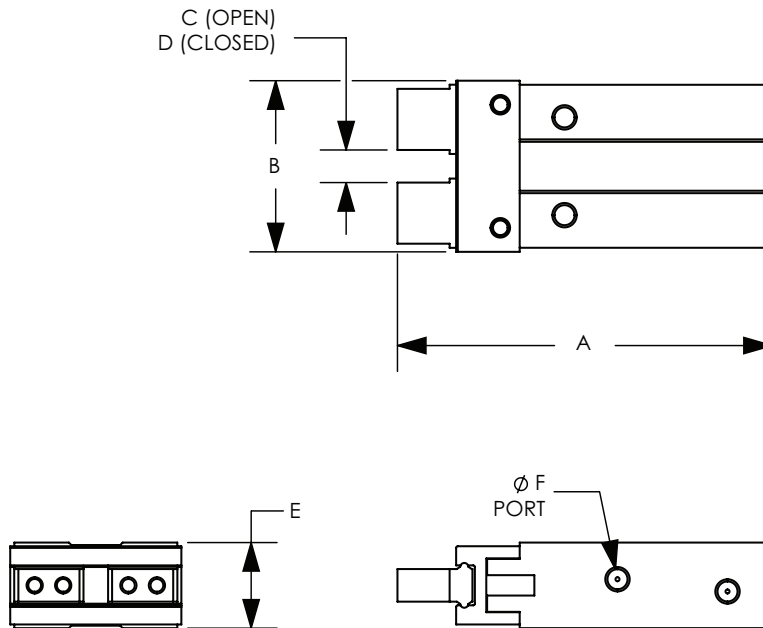
Click the above icon or scan the QR code to be taken to [www.automationdirect.com/selectors/pneumaticgripper](http://www.automationdirect.com/selectors/pneumaticgripper) for our online Gripper Configuration Tool for further selection assistance.



# Pneumatic Gripper - Parallel (End Mount Grip)

## Dimensions

mm [inches]



Pneumatic Gripper Dimensions						
Part #	A	B	C	D	E	ØF
<b>KP06MD-MB</b>	46.0 [1.81]	21.0 [0.83]	4.0 [0.16]	1.5 [0.06]	10.5 [0.41]	M3 x 0.5
<b>KP10MD-MB</b>	48.7 [1.92]	30.0 [1.18]	5.5 [0.22]	1.5 [0.06]	16.5 [0.65]	M3 x 0.5
<b>KP16MD-MB</b>	58.3 [2.30]	39.0 [1.54]	7.5 [0.30]	1.5 [0.06]	23.5 [0.93]	M5 x 0.8
<b>KP20MD-MB</b>	73.0 [2.87]	53.0 [2.09]	11.5 [0.45]	1.5 [0.06]	27.5 [1.08]	M5 x 0.8
<b>KP25MD-MB</b>	88.1 [3.47]	71.0 [2.80]	16.0 [0.63]	2.0 [0.08]	33.5 [1.32]	M5 x 0.8
<b>KP32MD-MB</b>	106.0 [4.17]	106.0 [4.17]	25.0 [0.98]	3.0 [0.12]	40.0 [1.57]	M5 x 0.8
<b>KP40MD-MB</b>	133.0 [5.24]	132.0 [5.20]	33.0 [1.30]	3.0 [0.12]	48.0 [1.89]	M5 x 0.8

See our website [www.AutomationDirect.com](http://www.AutomationDirect.com) for complete Engineering drawings.



# Pneumatic Gripper - Parallel (End Mount Grip)

## Single Acting - Normally Closed



**KP06MSC-MB**

NITRA Pneumatics grippers are an excellent choice for many automation applications. They are available in both parallel and angular travels in seven different body sizes. Grippers are either double acting, single acting normally closed or single acting normally open. Anodized aluminum bodies include integral mounting slots for position switches.

### Features

- Seven sizes available (6 to 40mm bore)
- Double acting or single acting N.O. or N.C.
- Anodized aluminum bodies
- Position switch ready with integral mounting slots



NITRA Pneumatic Gripper - Parallel (End Mount Grip) - Single Acting Normally Closed										
Part No.	Description	Style	Action	Size - Bore (mm)	Stroke (mm)	Grip	Body	Port(s)	Price	Weight (lbs)
<a href="#"><u>KP06MSC-MB</u></a>	NITRA pneumatic gripper	Parallel	Single acting, normally closed	6	4	End Mount	Anodized aluminum	M3 x 0.5	\$231.00	0.1
<a href="#"><u>KP10MSC-MB</u></a>				10					\$249.00	0.2
<a href="#"><u>KP16MSC-MB</u></a>				16	6			\$255.00	0.3	
<a href="#"><u>KP20MSC-MB</u></a>				20	10			\$362.00	0.5	
<a href="#"><u>KP25MSC-MB</u></a>				25	14			\$432.00	1.0	
<a href="#"><u>KP32MSC-MB</u></a>				32	22			\$652.00	1.9	
<a href="#"><u>KP40MSC-MB</u></a>				40	30			\$746.00	3.1	

NITRA Pneumatic Gripper Specifications		
<b>Fluid</b>	Air (clean/dry)	
<b>Pressure Range</b>	6mm, 10mm	50 to 101 psig (3.45 to 6.96 bar)
	16mm to 40mm	36 to 101 psig (2.48 to 6.96 bar)
<b>Proof Pressure</b>	175 psig	
<b>Temperature Range</b>	-4°F to 160°F (-20°C to 60°C)	
<b>Lubrication</b>	Not required	
<b>Repeatability</b>	6mm to 25mm	± 0.01 mm
	32mm to 40mm	± 0.02 mm
<b>Max Frequency</b>	6mm to 25mm	180 cycles/min
	32mm to 40mm	60 cycles/min
<b>Port Size</b>	M3 x 0.5 (6 to 10mm units) M5 x 0.8 (16 to 40mm units)	
<b>Sensor Switch Compatibility</b>	Nitra CPS9H-xx-x or CPS9C-xx-x	
<b>Includes</b>	Magnet	
<b>Approvals</b>	None	



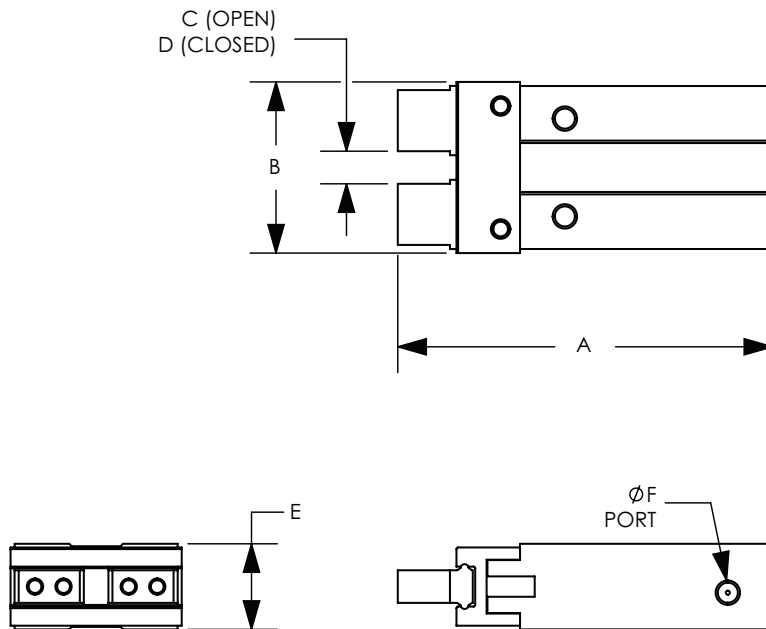
Click the above icon or scan the QR code to be taken to [www.automationdirect.com/selectors/pneumaticgripper](http://www.automationdirect.com/selectors/pneumaticgripper) for our online Gripper Configuration Tool for further selection assistance.



# Pneumatic Gripper - Parallel (End Mount Grip)

## Dimensions

mm [inches]



Pneumatic Gripper Dimensions						
Part #	A	B	C	D	E	ØF
<b>KP06MSC-MB</b>	46.0 [1.81]	21.0 [0.83]	4.0 [0.16]	1.5 [0.06]	10.5 [0.41]	M3 x 0.5
<b>KP10MSC-MB</b>	48.7 [1.92]	30.0 [1.18]	5.5 [0.22]	1.5 [0.06]	16.5 [0.65]	M3 x 0.5
<b>KP16MSC-MB</b>	58.3 [2.30]	39.0 [1.54]	7.5 [0.30]	1.5 [0.06]	23.5 [0.93]	M5 x 0.8
<b>KP20MSC-MB</b>	73.0 [2.87]	53.0 [2.09]	11.5 [0.45]	1.5 [0.06]	27.5 [1.08]	M5 x 0.8
<b>KP25MSC-MB</b>	88.1 [3.47]	71.0 [2.80]	16.0 [0.63]	2.0 [0.08]	33.5 [1.32]	M5 x 0.8
<b>KP32MSC-MB</b>	106.0 [4.17]	106.0 [4.17]	25.0 [0.98]	3.0 [0.12]	40.0 [1.57]	M5 x 0.8
<b>KP40MSC-MB</b>	133.0 [5.24]	132.0 [5.20]	33.0 [1.30]	3.0 [0.12]	48.0 [1.89]	M5 x 0.8

See our website [www.AutomationDirect.com](http://www.AutomationDirect.com) for complete Engineering drawings.



# Pneumatic Gripper - Parallel (End Mount Grip)

## Single Acting - Normally Open



**KP06MSA-MB**

NITRA Pneumatics grippers are an excellent choice for many automation applications. They are available in both parallel and angular travels in seven different body sizes. Grippers are either double acting, single acting normally closed or single acting normally open. Anodized aluminum bodies include integral mounting slots for position switches.

### Features

- Seven sizes available (6 to 40mm bore)
- Double acting or single acting N.O. or N.C.
- Anodized aluminum bodies
- Position switch ready with integral mounting slots



NITRA Pneumatic Gripper - Parallel (End Mount Grip) - Single Acting Normally Open										
Part No.	Description	Style	Action	Size - Bore (mm)	Stroke (mm)	Grip	Body	Port(s)	Price	Weight (lbs)
<a href="#">KP06MSA-MB</a>	NITRA pneumatic gripper	Parallel	Single acting, normally open	6	4	End Mount	Anodized aluminum	M3 x 0.5	\$231.00	0.1
<a href="#">KP10MSA-MB</a>				10					\$249.00	0.2
<a href="#">KP16MSA-MB</a>				16	6			M5 x 0.8	\$255.00	0.3
<a href="#">KP20MSA-MB</a>				20	10				\$362.00	0.5
<a href="#">KP25MSA-MB</a>				25	14				\$432.00	1.0
<a href="#">KP32MSA-MB</a>				32	22				\$652.00	1.9
<a href="#">KP40MSA-MB</a>				40	30				\$746.00	3.1

NITRA Pneumatic Gripper Specifications		
<b>Fluid</b>		Air (clean/dry)
<b>Pressure Range</b>	6mm, 10mm	50 to 101 psig (3.45 to 6.96 bar)
	16mm to 40mm	36 to 101 psig (2.48 to 6.96 bar)
<b>Proof Pressure</b>		175 psig
<b>Temperature Range</b>		-4°F to 160°F (0°C to 60°C)
<b>Lubrication</b>		Not required
<b>Repeatability</b>	6mm to 25mm	± 0.01 mm
	32mm to 40mm	± 0.02 mm
<b>Max Frequency</b>	6mm to 25mm	180 cycles/min
	32mm to 40mm	60 cycles/min
<b>Port Size</b>		M3 x 0.5 (6 to 10mm units) M5 x 0.8 (16 to 40mm units)
<b>Sensor Switch Compatibility</b>		Nitra CPS9H-xx-x or CPS9C-xx-x
<b>Includes</b>		Magnet
<b>Approvals</b>		None



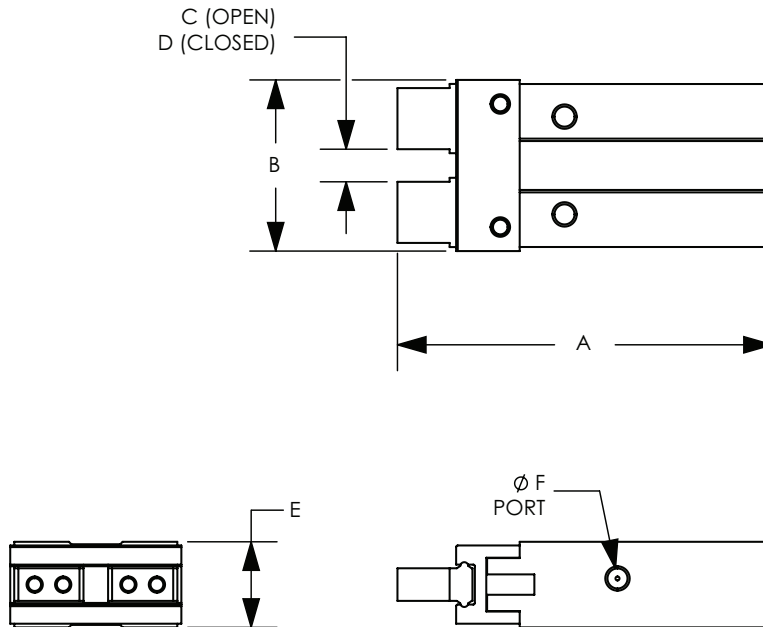
Click the above icon or scan the QR code to be taken to [www.automationdirect.com/selectors/pneumaticgripper](http://www.automationdirect.com/selectors/pneumaticgripper) for our online Gripper Configuration Tool for further selection assistance.



# Pneumatic Gripper - Parallel (End Mount Grip)

## Dimensions

mm [inches]



Pneumatic Gripper Dimensions						
Part #	A	B	C	D	E	ØF
<a href="#">KP06MSA-MB</a>	46.0 [1.81]	21.0 [0.83]	4.0 [0.16]	1.5 [0.06]	10.5 [0.41]	M3 x 0.5
<a href="#">KP10MSA-MB</a>	48.7 [1.92]	30.0 [1.18]	5.5 [0.22]	1.5 [0.06]	16.5 [0.65]	M3 x 0.5
<a href="#">KP16MSA-MB</a>	58.3 [2.30]	39.0 [1.54]	7.5 [0.30]	1.5 [0.06]	23.5 [0.93]	M5 x 0.8
<a href="#">KP20MSA-MB</a>	73.0 [2.87]	53.0 [2.09]	11.5 [0.45]	1.5 [0.06]	27.5 [1.08]	M5 x 0.8
<a href="#">KP25MSA-MB</a>	88.1 [3.47]	71.0 [2.80]	16.0 [0.63]	2.0 [0.08]	33.5 [1.32]	M5 x 0.8
<a href="#">KP32MSA-MB</a>	106.0 [4.17]	106.0 [4.17]	25.0 [0.98]	3.0 [0.12]	40.0 [1.57]	M5 x 0.8
<a href="#">KP40MSA-MB</a>	133.0 [5.24]	132.0 [5.20]	33.0 [1.30]	3.0 [0.12]	48.0 [1.89]	M5 x 0.8

See our website [www.AutomationDirect.com](http://www.AutomationDirect.com) for complete Engineering drawings.



# Pneumatic Gripper - Angular (Side Mount Grip)

## Double Acting



KA06MD-M

NITRA Pneumatics grippers are an excellent choice for many automation applications. They are available in both parallel and angular travels in seven different body sizes. Grippers are either double acting, single acting normally closed or single acting normally open. Anodized aluminum bodies include integral mounting slots for position switches.

### Features

- Six sizes available (6 to 32mm bore)
- Double acting or single acting N.O.
- Anodized aluminum bodies
- Position switch ready with integral mounting slots



NITRA Pneumatic Gripper - Angular - Double Acting										
Part No.	Description	Style	Action	Size - Bore (mm)	Position	Grip	Body	Port(s)	Price	Weight (lbs)
<a href="#">KA06MD-M</a>	NITRA pneumatic gripper	Angular	Double acting	6	30 degrees open, -10 degrees closed	Side mount grip	Anodized aluminum	M3 x 0.5	\$119.00	0.1
<a href="#">KA10MD-M</a>				10					\$165.00	0.2
<a href="#">KA16MD-M</a>				16				\$172.00	0.3	
<a href="#">KA20MD-M</a>				20				\$207.00	0.5	
<a href="#">KA25MD-M</a>				25				\$231.00	1.0	
<a href="#">KA32MD-M</a>				32				\$255.00	1.9	

NITRA Pneumatic Gripper Specifications		
<b>Fluid</b>	Air (clean/dry)	
<b>Pressure Range</b>	All double acting models: 22 to 101 psig (1.52 to 6.97 bar)	
<b>Proof Pressure</b>	175 psig	
<b>Temperature Range</b>	-4°F to 160°F (-20°C to 60°C)	
<b>Lubrication</b>	Cylinder: not required - Jaws: grease regularly	
<b>Cushion Type</b>	Bumper	
<b>Integrated Flow Control</b>	6mm	N/A
	10mm to 32mm	Standard - flow control in closing direction
<b>Maximum Frequency</b>	180 cycles/min	
<b>Port Size</b>	M3 x 0.5 (6mm to 10mm units) M5 x 0.8 (16mm to 32mm units)	
<b>Sensor Switch Compatibility</b>	Nitra CPS9H-xx-x or CPS9C-xx-x	
<b>Includes</b>	Magnet	
<b>Approvals</b>	None	



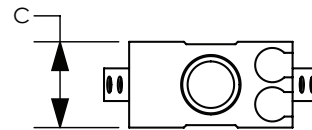
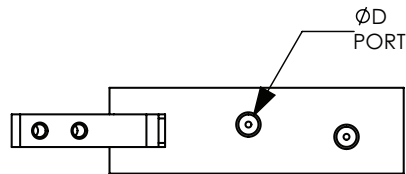
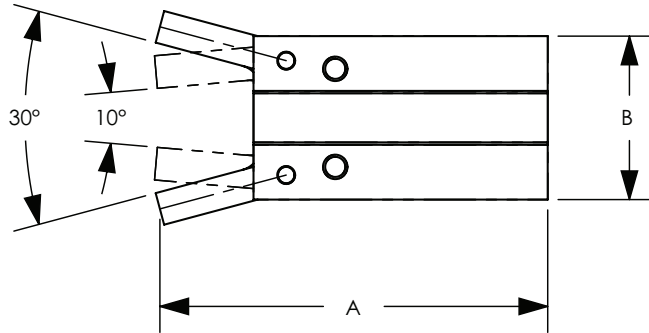
Click the above icon or scan the QR code to be taken to [www.automationdirect.com/selectors/pneumaticgripper](http://www.automationdirect.com/selectors/pneumaticgripper) for our online Gripper Configuration Tool for further selection assistance.



# Pneumatic Gripper - Angular (Side Mount Grip)

## Dimensions

mm [inches]



Pneumatic Gripper Dimensions				
Part #	A	B	C	ØD
<a href="#">KA06MD-M</a>	47.5 [1.87]	20.0 [0.79]	10.5 [0.41]	M3 x 0.5
<a href="#">KA10MD-M</a>	52.5 [2.07]	23.0 [0.91]	16.5 [0.65]	M3 x 0.5
<a href="#">KA16MD-M</a>	62.5 [2.46]	30.5 [1.20]	23.5 [0.93]	M5 x 0.8
<a href="#">KA20MD-M</a>	78.0 [3.07]	42.0 [1.65]	27.5 [1.08]	M5 x 0.8
<a href="#">KA25MD-M</a>	92.0 [3.62]	52.0 [2.05]	33.5 [1.32]	M5 x 0.8
<a href="#">KA32MD-M</a>	96.5 [3.80]	60.0 [2.36]	40.0 [1.57]	M5 x 0.8

See our website [www.AutomationDirect.com](http://www.AutomationDirect.com) for complete Engineering drawings.





# Pneumatic Gripper - Angular (Side Mount Grip)

## Single Acting - Normally Open



**KA06MSA-M**

NITRA Pneumatics grippers are an excellent choice for many automation applications. They are available in both parallel and angular travels in seven different body sizes. Grippers are either double acting, single acting normally closed or single acting normally open. Anodized aluminum bodies include integral mounting slots for position switches.

### Features

- Six sizes available (6 to 32mm bore)
- Double acting or single acting N.O.
- Anodized aluminum bodies
- Position switch ready with integral mounting slots



NITRA Pneumatic Gripper - Angular - Normally Open										
Part No.	Description	Style	Action	Size - Bore (mm)	Position	Grip	Body	Port(s)	Price	Weight (lbs)
<a href="#"><u>KA06MSA-M</u></a>	NITRA pneumatic gripper	Angular	Single acting, normally open	6	30 degrees open, -10 degrees closed	Side mount grip	Anodized aluminum	M3 x 0.5	\$119.00	0.1
<a href="#"><u>KA10MSA-M</u></a>				10					\$165.00	0.2
<a href="#"><u>KA16MSA-M</u></a>				16				\$172.00	0.3	
<a href="#"><u>KA20MSA-M</u></a>				20				\$207.00	0.5	
<a href="#"><u>KA25MSA-M</u></a>				25				\$231.00	1.0	
<a href="#"><u>KA32MSA-M</u></a>				32				\$255.00	1.9	

NITRA Pneumatic Gripper Specifications		
<b>Fluid</b>		Air (clean/dry)
<b>Pressure Range</b>	6mm	45 to 101 psig (3.10 to 6.97 bar)
	10mm to 32mm	36 to 101 psig (2.48 to 6.97 bar)
<b>Proof Pressure</b>		175 psig
<b>Temperature Range</b>		-4°F to 160°F (-20°C to 60°C)
<b>Lubrication</b>		Cylinder: not required - Jaws: grease regularly
<b>Cushion Type</b>		Bumper
<b>Integrated Flow Control</b>	6mm	N/A
	10mm to 32mm	Standard - flow control in closing direction
<b>Maximum Frequency</b>		180 cycles/min
<b>Port Size</b>		M3 x 0.5 (6mm to 10mm units) M5 x 0.8 (16mm to 32mm units)
<b>Sensor Switch Compatibility</b>		Nitra CPS9H-xx-x or CPS9C-xx-x
<b>Includes</b>		Magnet
<b>Approvals</b>		None



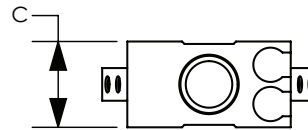
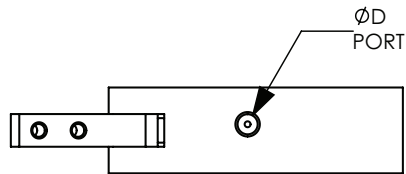
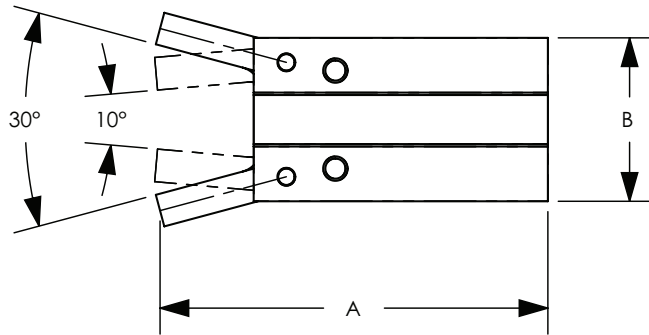
Click the above icon or scan the QR code to be taken to [www.automationdirect.com/selectors/pneumaticgripper](http://www.automationdirect.com/selectors/pneumaticgripper) for our online Gripper Configuration Tool for further selection assistance.



# Pneumatic Gripper - Angular (Side Mount Grip)

## Dimensions

mm [inches]



Pneumatic Gripper Dimensions				
Part #	A	B	C	ØD
<b>KA06MSA-M</b>	47.5 [1.87]	20.0 [0.79]	10.5 [0.41]	M3 x 0.5
<b>KA10MSA-M</b>	52.5 [2.07]	23.0 [0.91]	16.5 [0.65]	M3 x 0.5
<b>KA16MSA-M</b>	62.5 [2.46]	30.5 [1.20]	23.5 [0.93]	M5 x 0.8
<b>KA20MSA-M</b>	78.0 [3.07]	42.0 [1.65]	27.5 [1.08]	M5 x 0.8
<b>KA25MSA-M</b>	92.0 [3.62]	52.0 [2.05]	33.5 [1.32]	M5 x 0.8
<b>KA32MSA-M</b>	96.5 [3.80]	60.0 [2.36]	40.0 [1.57]	M5 x 0.8

See our website [www.AutomationDirect.com](http://www.AutomationDirect.com) for complete Engineering drawings.