

# OKK Series Base and Roof Sets



## Application

Each set provides the base and roof for one OKK Series enclosure.

Requires the following compatible components for a completed OKK Series enclosure:

- Vertical frame rail set
- Exterior side panels
- Door
- Exterior rear panel or additional door
- Subpanel

Easily find compatible OKK Series parts for your enclosure using the link button or QR code below:

### [Configuration Tool](#)



## Features

- Bases have removable flanges for easy cable and wire entry.
- Roof bolts can be replaced with eyebolts (GLF812-K4 for enclosure lifting).
- Base is compatible with [OKK Series Plinth Kits](#) for cable ingress and management.
- Vertical rails are connected with included hardware.

\*Assembly requires a T30 bit.

## Material and Finish

- Sendzimir galvanized frame rails
- Zamak corner joints
- Exterior portions are RAL7035 light gray textured powder coat finish

## Listings

- Fully-assembled OKK Series Enclosures are rated as follows:
  - UL 508a Type 12 [UL File E503249]
  - CSA Type 12 [CSA File 115232]
- Complies with
  - NEMA Type 12
  - IEC EN60529 IP55



| Base and Roof Sets        |          |                            |                     |
|---------------------------|----------|----------------------------|---------------------|
| Part Number               | Price    | Enclosure Size<br>WxD      | Drawing<br>Link     |
| <a href="#">OKKTB6040</a> | \$278.00 | 600 x 400 [23.62 x 15.75]  | <a href="#">PDF</a> |
| <a href="#">OKKTB6080</a> | \$364.00 | 600 x 600 [23.62 x 23.62]  | <a href="#">PDF</a> |
| <a href="#">OKKTB6060</a> | \$469.00 | 600 x 800 [23.62 x 31.50]  | <a href="#">PDF</a> |
| <a href="#">OKKTB8040</a> | \$325.00 | 800 x 400 [31.50 x 15.75]  | <a href="#">PDF</a> |
| <a href="#">OKKTB8060</a> | \$367.00 | 800 x 600 [31.50 x 23.62]  | <a href="#">PDF</a> |
| <a href="#">OKKTB8080</a> | \$478.00 | 800 x 800 [31.50 x 31.50]  | <a href="#">PDF</a> |
| <a href="#">OKKTB1040</a> | \$346.00 | 1000 x 400 [39.37 x 15.75] | <a href="#">PDF</a> |
| <a href="#">OKKTB1060</a> | \$398.00 | 1000 x 600 [39.37 x 23.62] | <a href="#">PDF</a> |
| <a href="#">OKKTB1080</a> | \$524.00 | 1000 x 800 [39.37 x 31.50] | <a href="#">PDF</a> |
| <a href="#">OKKTB1240</a> | \$492.00 | 1200 x 400 [47.24 x 15.75] | <a href="#">PDF</a> |
| <a href="#">OKKTB1260</a> | \$544.00 | 1200 x 600 [47.24 x 23.62] | <a href="#">PDF</a> |
| <a href="#">OKKTB1280</a> | \$700.00 | 1200 x 800 [47.24 x 31.50] | <a href="#">PDF</a> |

Note: Dimensions in millimeters [inches].

# OKK Series Enclosure Rails



## Application

Each set provides the vertical structure for one OKK Series enclosure.

Requires the following compatible components for a completed OKK Series enclosure:

- Base and roof set
- Exterior side panels
- Door
- Exterior rear panel or additional door
- Subpanel

Easily find compatible OKK Series parts for your enclosure using the link button or QR code below:

### [Configuration Tool](#)



## Features

- Package includes four rails.
- Pre-punched holes on interior surfaces accept M6 cage nuts and M5 self-threading screws.

## Material

- Sendzimir galvanized steel

## Listings

- Fully-assembled OKK Series Enclosure is rated:
  - UL 508a Type 12 [UL File E503249]
  - CSA Type 12 [CSA File 115232]
- Complies with
  - NEMA Type 12
  - IEC EN60529 IP55



| OKK Series Enclosure Rails |          |     |                  |                     |
|----------------------------|----------|-----|------------------|---------------------|
| Part Number                | Price    | Qty | Enclosure Height | Drawing Link        |
| <a href="#">MTK180-4</a>   | \$215.00 | 4   | 1800 [70.87]     | <a href="#">PDF</a> |
| <a href="#">MTK200-4</a>   | \$235.00 | 4   | 2000 [78.74]     | <a href="#">PDF</a> |

Note: Dimensions in millimeters [inches].

# OKK Series Side Exterior Panels



## Application

Each exterior panel provides two side exterior surfaces for an OKK Series enclosure.

Requires the following compatible components for a completed OKK Series enclosure:

- Base and roof set
- Vertical frame rail set
- Door
- Exterior rear panel or additional door
- Subpanel

Multiple enclosure extensions bayed together can be sealed with a single set of side panels.

## Material

- 1.5 mm carbon steel

## Finish

- RAL 7035 light gray
- Textured powder coat finish

## Features

- Package of two side panels
- Poured-in-place polyurethane gasket
- Includes mounting clips, screws, and gaskets (CLK013-KIT2F)

## Listings

- Fully-assembled OKK Series Enclosures are rated as follows:
  - UL 508a Type 12 [UL File E503249]
  - CSA Type 12 [CSA File 115232]
- Complies with the following:
  - NEMA Type 12
  - IEC EN60529 IP55



Easily find compatible OKK Series parts for your enclosure using the link button or QR code below:

### Configuration Tool



| Side Exterior Panels   |          |                            |                     |
|------------------------|----------|----------------------------|---------------------|
| Part Number            | Price    | Fits Enclosure Size HxD    | Drawing Link        |
| <a href="#">DLK184</a> | \$79.00  | 1800 x 400 [70.87 x 15.75] | <a href="#">PDF</a> |
| <a href="#">DLK186</a> | \$113.00 | 1800 x 600 [70.87 x 23.62] | <a href="#">PDF</a> |
| <a href="#">DLK188</a> | \$151.00 | 1800 x 800 [70.87 x 31.50] | <a href="#">PDF</a> |
| <a href="#">DLK204</a> | \$86.00  | 2000 x 400 [78.74 x 15.75] | <a href="#">PDF</a> |
| <a href="#">DLK206</a> | \$123.00 | 2000 x 600 [78.74 x 23.62] | <a href="#">PDF</a> |
| <a href="#">DLK208</a> | \$160.00 | 2000 x 800 [78.74 x 31.50] | <a href="#">PDF</a> |

Note: Dimensions in millimeters [inches].

# OKK Series Rear Exterior Panels



## Application

Each rear exterior panel provides the rear surface for one OKK Series enclosure.

Requires the following compatible components for a completed OKK Series enclosure:

- Base and roof set
- Vertical frame rail set
- Exterior side panels
- Door
- Subpanel

An additional door may be used in lieu of a rear exterior panel to create a dual access enclosure.

## Material

- 2.0 mm carbon steel

## Finish

- RAL 7035 light gray
- Textured powder coat finish

## Features

- Poured-in-place polyurethane gasket
- Includes mounting clips, screws, and gaskets (CLK013-KIT2F)

## Listings

- Fully-assembled OKK Series Enclosures are rated as follows:
  - UL 508a Type 12 [UL File E503249]
  - CSA Type 12 [CSA File 115232]
- Complies with the following:
  - NEMA Type 12
  - EC EN60529 IP55



Easily find compatible OKK Series parts for your enclosure using the link button or QR code below:

### [Configuration Tool](#)



| Rear Exterior Panels   |          |                             |                     |
|------------------------|----------|-----------------------------|---------------------|
| Part Number            | Price    | Fits Enclosure Size<br>HxW  | Drawing<br>Link     |
| <a href="#">RPE186</a> | \$86.00  | 1800 x 600 [70.87 x 23.62]  | <a href="#">PDF</a> |
| <a href="#">RPE188</a> | \$107.00 | 1800 x 800 [70.87 x 31.50]  | <a href="#">PDF</a> |
| <a href="#">RPE18A</a> | \$127.00 | 1800 x 1000 [70.87 x 39.37] | <a href="#">PDF</a> |
| <a href="#">RPE18C</a> | \$147.00 | 1800 x 1200 [70.87 x 47.24] | <a href="#">PDF</a> |
| <a href="#">RPE206</a> | \$104.00 | 2000 x 600 [78.74 x 23.62]  | <a href="#">PDF</a> |
| <a href="#">RPE208</a> | \$119.00 | 2000 x 800 [78.74 x 31.50]  | <a href="#">PDF</a> |
| <a href="#">RPE20A</a> | \$134.00 | 2000 x 1000 [78.74 x 39.37] | <a href="#">PDF</a> |
| <a href="#">RPE20C</a> | \$156.00 | 2000 x 1200 [78.74 x 47.24] | <a href="#">PDF</a> |

Note: Dimensions in millimeters [inches].

# OKK Series Doors



## Application

Each door provides interior access to an OKK Series enclosure.

Requires the following compatible components for a completed OKK Series enclosure:

- Base and roof set
- Vertical frame rail set
- Exterior side panels
- Exterior rear panel or additional door
- Subpanel

## Material

- 2.0 mm carbon steel

## Finish

- RAL 7035 light gray
- Textured powder coat finish

## Features

- Fully reversible (handle can be oriented on the left or right side)
- 120° opening
- Four hinges
- 3.0mm double-bar 4-point latch with double-bit key
- Poured-in-place two-component polyurethane gasket, foamed on a perimeter external to the latch points
- Doors include a Sendzimir galvanized inner stiffening frame with Zamak zinc alloy corner pieces.

## Listings

- Fully-assembled OKK Series Enclosures are rated as follows:
  - UL 508a Type 12 [UL File E503249]
  - CSA Type 12 [CSA File 115232]
- Complies with the following:
  - NEMA Type 12
  - IEC EN60529 IP55



Easily find compatible OKK Series parts for your enclosure using the link button or QR code below:

## Configuration Tool



| Single-Door            |          |                             |                     |
|------------------------|----------|-----------------------------|---------------------|
| Part Number            | Price    | Size HxW                    | Drawing Link        |
| <a href="#">DBE186</a> | \$199.00 | 1800 x 600 [70.87 x 23.62]  | <a href="#">PDF</a> |
| <a href="#">DBE188</a> | \$239.00 | 1800 x 800 [70.87 x 31.50]  | <a href="#">PDF</a> |
| <a href="#">DBE18A</a> | \$257.00 | 1800 x 1000 [70.87 x 39.37] | <a href="#">PDF</a> |
| <a href="#">DBE206</a> | \$214.00 | 2000 x 600 [78.74 x 23.62]  | <a href="#">PDF</a> |
| <a href="#">DBE208</a> | \$255.00 | 2000 x 800 [78.74 x 31.50]  | <a href="#">PDF</a> |
| <a href="#">DBE20A</a> | \$290.00 | 2000 x 1000 [78.74 x 39.37] | <a href="#">PDF</a> |

Note: Dimensions in millimeters [inches].

| Double-Door            |          |                             |                     |
|------------------------|----------|-----------------------------|---------------------|
| Part Number            | Price    | Size HxW                    | Drawing Link        |
| <a href="#">DBE18C</a> | \$328.00 | 1800 x 1200 [70.87 x 47.24] | <a href="#">PDF</a> |
| <a href="#">DBE20C</a> | \$352.00 | 2000 x 1200 [78.74 x 47.24] | <a href="#">PDF</a> |

Note: Dimensions in millimeters [inches].  
Double-door sets consist of a master door and slave door which are packaged separately.

# OKK Series Doors with Window



## Application

Each door provides interior access to an OKK Series enclosure.

Requires the following compatible components for a completed OKK Series enclosure:

- Base and roof set
- Vertical frame rail set
- Exterior side panels
- Exterior rear panel or additional door
- Subpanel

## Material

- 2.0 mm carbon steel
- 4.0 mm acrylic window

## Finish

- RAL 7035 light gray
- Textured powder coat finish

## Features

- Fully reversible
- 120° opening
- Four hinges
- 3.0mm double-bar 4-point latch with double-bit key
- Poured-in-place two-component polyurethane gasket, foamed on a perimeter external to the latch points
- Doors include a Sendzimir galvanized inner stiffening frame with Zamak zinc alloy corner pieces.

## Listings

- Fully-assembled OKK Series Enclosures are rated as follows:
  - UL 508a Type 12 [UL File E503249]
  - CSA Type 12 [CSA File 115232]
- Complies with the following:
  - NEMA Type 12
  - IEC EN60529 IP55



Easily find compatible OKK Series parts for your enclosure using the link button or QR code below:

### Configuration Tool



| Doors with Window      |          |                             |                     |
|------------------------|----------|-----------------------------|---------------------|
| Part Number            | Price    | Size<br>HxWxD               | Drawing<br>Link     |
| <a href="#">DTE188</a> | \$451.00 | 1800 x 800 [70.87 x 31.50]  | <a href="#">PDF</a> |
| <a href="#">DTE18A</a> | \$529.00 | 1800 x 1000 [70.87 x 39.37] | <a href="#">PDF</a> |
| <a href="#">DTE208</a> | \$509.00 | 2000 x 800 [78.74 x 31.50]  | <a href="#">PDF</a> |
| <a href="#">DTE20A</a> | \$596.00 | 2000 x 1000 [78.74 x 39.37] | <a href="#">PDF</a> |

Note: Dimensions in millimeters [inches].

# OKK Series Subpanels



## Application

Provides the primary subpanel for an OKK Series enclosure.

Requires the following compatible components for a completed OKK Series enclosure:

- Base and roof set
- Vertical frame rail set
- Exterior side panels
- Door
- Exterior rear panel or additional door

Subpanel can be mounted at a variable depth or flush mounted. Multiple subpanels can be used in a Dual access enclosure.

Subpanels may also be recess mounted on one or both sides for use as side-mounted panels or to form a barrier between two adjacent bays. For side-mount applications, match subpanel nominal width to enclosure depth.

*APK110 (sold separately) required for all recess mounting applications*

## Material

- 2.5 mm Sendzimir galvanized steel

## Features

- Includes installation hardware ([PPK100](#)).

Easily find compatible OKK Series parts for your enclosure using the link button or QR code below:

### [Configuration Tool](#)



| Subpanels              |          |                             |                     |
|------------------------|----------|-----------------------------|---------------------|
| Part Number            | Price    | Fits Enclosure Size<br>HxW  | Drawing Link        |
| <a href="#">PNA186</a> | \$95.00  | 1800 x 600 [70.87 x 23.62]  | <a href="#">PDF</a> |
| <a href="#">PNA188</a> | \$110.00 | 1800 x 800 [70.87 x 31.50]  | <a href="#">PDF</a> |
| <a href="#">PNA18A</a> | \$126.00 | 1800 x 1000 [70.87 x 39.37] | <a href="#">PDF</a> |
| <a href="#">PNA18C</a> | \$145.00 | 1800 x 1200 [70.87 x 47.24] | <a href="#">PDF</a> |
| <a href="#">PNA206</a> | \$108.00 | 2000 x 600 [78.74 x 23.62]  | <a href="#">PDF</a> |
| <a href="#">PNA208</a> | \$133.00 | 2000 x 800 [78.74 x 31.50]  | <a href="#">PDF</a> |
| <a href="#">PNA20A</a> | \$154.00 | 2000 x 1000 [78.74 x 39.37] | <a href="#">PDF</a> |
| <a href="#">PNA20C</a> | \$179.00 | 2000 x 1200 [78.74 x 47.24] | <a href="#">PDF</a> |

Note: Dimensions in millimeters [inches].

# OKK Series Swing Panels



## Application

Provides an interior mounting surface just behind the exterior door. Panel can swing open to allow access to the interior of the enclosure.

## Material

- 2.0 mm carbon steel

## Finish

- RAL 7035 light gray
- Textured powder coat finish

## Features

- Includes hinges, screws, and bolts
- Zinc alloy corner pieces.

## Listings

- IP44



Easily find compatible OKK Series parts for your enclosure using the link button or QR code below:

### [Configuration Tool](#)



| Swing Panels           |          |                             |                     |
|------------------------|----------|-----------------------------|---------------------|
| Part Number            | Price    | Fits Enclosure Size<br>HxW  | Drawing Link        |
| <a href="#">DBI188</a> | \$259.00 | 1800 x 800 [70.87 x 31.50]  | <a href="#">PDF</a> |
| <a href="#">DBI18A</a> | \$304.00 | 1800 x 1000 [70.87 x 39.37] | <a href="#">PDF</a> |
| <a href="#">DBI208</a> | \$297.00 | 2000 x 800 [78.74 x 31.50]  | <a href="#">PDF</a> |
| <a href="#">DBI20A</a> | \$344.00 | 2000 x 1000 [78.74 x 39.37] | <a href="#">PDF</a> |

Note: Dimensions in millimeters [inches].  
Swing panels kits consist of a panel and a mounting frame; each packaged separately.





# OKK Series Plinths



ZAK081



ZAK082

## Description

Components for custom-designed plinths for OKK Series enclosures.

## Material

- 2.0 mm carbon steel

## Finish

- RAL 7024 graphite gray
- Textured powder coat finish

## Features

- Both front/rear plates and side flanges are sold in pairs.
- Mix and match front/rear plates and side flanges to match enclosure WxD dimensions.
- Use two sets of 100mm [3.94 in] height side flanges with 200mm [7.87 in] height front/rear plate sets.
- Plinth assemblies can be stacked to form greater plinth heights.



Easily find compatible OKK Series parts for your enclosure using the link button or QR code below:

### Configuration Tool



View assembly guide with the link button or QR code below:

### Assembly Guide



### Plinth Front and Rear Plate Sets

| Part Number            | Price    | Size HxW                  | Drawing Link        |
|------------------------|----------|---------------------------|---------------------|
| <a href="#">ZAK061</a> | \$62.00  | 100 x 600 [3.94 x 23.62]  | <a href="#">PDF</a> |
| <a href="#">ZAK062</a> | \$123.00 | 200 x 600 [7.87 x 23.62]  | <a href="#">PDF</a> |
| <a href="#">ZAK081</a> | \$79.00  | 100 x 800 [3.94 x 31.50]  | <a href="#">PDF</a> |
| <a href="#">ZAK082</a> | \$158.00 | 200 x 800 [7.87 x 31.50]  | <a href="#">PDF</a> |
| <a href="#">ZAK0A1</a> | \$91.00  | 100 x 1000 [3.94 x 39.37] | <a href="#">PDF</a> |
| <a href="#">ZAK0A2</a> | \$181.00 | 200 x 1000 [7.87 x 39.37] | <a href="#">PDF</a> |
| <a href="#">ZAK0C1</a> | \$92.00  | 100 x 1200 [3.94 x 47.24] | <a href="#">PDF</a> |
| <a href="#">ZAK0C2</a> | \$185.00 | 200 x 1200 [7.87 x 47.24] | <a href="#">PDF</a> |

Note: Dimensions in millimeters [inches].



FLK16

### Plinth Side Flanges

| Part Number           | Price  | Size HxD                 | Drawing Link        |
|-----------------------|--------|--------------------------|---------------------|
| <a href="#">FLK14</a> | \$4.75 | 100 x 400 [3.94 x 15.75] | <a href="#">PDF</a> |
| <a href="#">FLK16</a> | \$6.50 | 100 x 600 [3.94 x 23.62] | <a href="#">PDF</a> |
| <a href="#">FLK18</a> | \$7.25 | 100 x 800 [3.94 x 31.50] | <a href="#">PDF</a> |

Note: Dimensions in millimeters [inches].



# OKK Series Accessories

## Galvanized Steel Mounting Channels

### Application

Mounting channels can be used to create additional mounting positions at any location inside the enclosure. They can be connected to the inner frame of the enclosure or span between other mounting channels in either a vertical or horizontal orientation.

### Features

- Available with a flanged end or a closed end.
  - Either may work depending on the mounting location and orientation.
- Includes pre-punched holes to accept M6 cage nuts and M5 self-threading screws.

Easily find compatible OKK Series parts for your enclosure using the link button or QR code below:

### Configuration Tool



| Flanged Mounting Channels |         |                                     |
|---------------------------|---------|-------------------------------------|
| Part Number               | Price   | For Use with Width/Depth Enclosures |
| <a href="#">STK445</a>    | \$14.00 | 400.00 x 0.00 [10160]               |
| <a href="#">STK645</a>    | \$16.75 | 600.00 x 0.00 [15240]               |
| <a href="#">STK845</a>    | \$18.00 | 800.00 x 0.00 [20320]               |
| <a href="#">STKA45</a>    | \$23.00 | 1000.00 x 0.00 [25400]              |

Note: Dimensions in millimeters [inches].



| Closed-End Mounting Channels |         |                                     |
|------------------------------|---------|-------------------------------------|
| Part Number                  | Price   | For Use with Width/Depth Enclosures |
| <a href="#">SCK407</a>       | \$14.00 | 400.00 x 0.00 [10160]               |
| <a href="#">SCK607</a>       | \$16.75 | 600.00 x 0.00 [15240]               |
| <a href="#">SCK807</a>       | \$18.00 | 800.00 x 0.00 [20320]               |
| <a href="#">SCKA07</a>       | \$23.00 | 1000.00 x 0.00 [25400]              |
| <a href="#">SCKC07</a>       | \$27.50 | 1200.00 x 0.00 [30480]              |

Note: Dimensions in millimeters [inches].





# OKK Series Accessories

## Drip Shields

### Applications

Designed to offer protection from rain in outdoor applications.

### Material

- Carbon steel

### Finish

- RAL 7035 light gray
- Textured powder coat finish

### Features

- Gasket and mounting hardware included

Easily find compatible OKK Series parts for your enclosure using the link button or QR code below:

### Configuration Tool



PFR060

| Drip Shields           |         |              |                     |
|------------------------|---------|--------------|---------------------|
| Part Number            | Price   | Length       | Drawing Link        |
| <a href="#">PFR060</a> | \$81.00 | 600 [23.62]  | <a href="#">PDF</a> |
| <a href="#">PFR080</a> | \$85.00 | 800 [31.50]  | <a href="#">PDF</a> |
| <a href="#">PFR100</a> | \$89.00 | 1000 [39.37] | <a href="#">PDF</a> |
| <a href="#">PFR120</a> | \$92.00 | 1200 [47.24] | <a href="#">PDF</a> |

Note: Dimensions in millimeters [inches].



# OKK Series Accessories

## Folding Desk

### Features

- Mounting hardware included
- Installs inside or outside of enclosure.

| Folding Desk                              |          |                           |                     |
|---|----------|---------------------------|---------------------|
| Part Number                               | Price    | Size<br>HxW               | Drawing<br>Link     |
| <a href="#">CSTK70</a>                    | \$396.00 | 539 x 352 [21.22 x 13.86] | <a href="#">PDF</a> |
| Note: Dimensions in millimeters [inches]. |          |                           |                     |



Easily find compatible OKK Series parts for your enclosure using the link button or QR code below:

### Configuration Tool





# OKK Series Accessories

## Baying Hardware Kit

### Application

Baying kit is used to connect two or more enclosure bays together to form a single multi-door enclosure. Fits all sizes of OKK Series enclosures.

Easily find compatible OKK Series parts for your enclosure using the link button or QR code below:

| Baying Hardware Kit    |         |                                  |
|------------------------|---------|----------------------------------|
| Part Number            | Price   | Includes                         |
| <a href="#">UTK700</a> | \$30.50 | Brackets, gaskets, and fasteners |

### Configuration Tool



## Filler Plates

### Application

Used to fill the gap between the subpanels or roof plates of two joined enclosure bays. Not required for all applications.

### Features

Mounting hardware included.

| Subpanel Filler Plates |         |                       |   |                     |
|------------------------|---------|-----------------------|---|---------------------|
| Part Number            | Price   | Fits Enclosure Height | Description   | Drawing Link        |
| <a href="#">FUP188</a> | \$79.00 | 1800 [70.87]          | Quadritalia OKK Series subpanel filler plate, galvanized steel. | <a href="#">PDF</a> |
| <a href="#">FUP208</a> | \$87.00 | 2000 [78.74]          |   | <a href="#">PDF</a> |

Note: Dimensions in millimeters [inches].



| Roof Filler Plates     |         |                       |   |                     |
|------------------------|---------|-----------------------|---|---------------------|
| Part Number            | Price   | Fits Enclosures Depth | Description   | Drawing Link        |
| <a href="#">TTP040</a> | \$9.75  | 400 [15.75]           | Quadritalia OKK Series roof panel filler plate, carbon steel, RAL 7035 light gray, textured powder coat finish. | <a href="#">PDF</a> |
| <a href="#">TTP060</a> | \$10.25 | 600 [23.62]           |   | <a href="#">PDF</a> |
| <a href="#">TTP080</a> | \$12.25 | 800 [31.50]           |   | <a href="#">PDF</a> |

Note: Dimensions in millimeters [inches].





# OKK Series Accessories

## Subpanel Mounting Hardware Kits

### Application

PPK100 is included with each subpanel and is used to mount the subpanel within the enclosure.

| Subpanel Mounting Hardware Kits |         |  |
|---------------------------------|---------|--|
| Part Number                     | Price   | Includes   |
| <b>PPK100</b>                   | \$39.00 | Brackets, sliders, conic pins, and fasteners included. |

Easily find compatible OKK Series parts for your enclosure using the link button or QR code below:

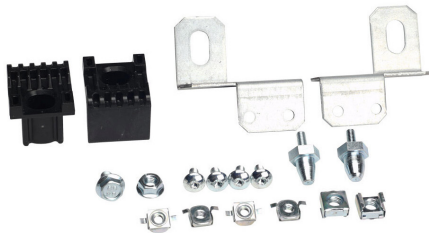
### Configuration Tool



### Application

APK110 allows the subpanel to be recess mounted flush within the frame rails of the enclosure for maximizing interior space, for side-mounting subpanels, or to form a barrier between adjacent bays.

| Subpanel Mounting Hardware Kits |         |  |
|---------------------------------|---------|--|
| Part Number                     | Price   | Includes   |
| <b>APK110</b>                   | \$15.25 | Brackets, sliders, conic pins, and fasteners included. |



# OKK Series Accessories



Easily find compatible OKK Series parts for your enclosure using the link button or QR code below:

## Configuration Tool



| Cage Nuts                     |         |                                |     |
|-------------------------------|---------|--------------------------------|-----|
| Part Number                   | Price   | Description                    | Qty |
| <a href="#"><u>DGM800</u></a> | \$58.00 | M8 cage nut                    | 100 |
| <a href="#"><u>DGM600</u></a> | \$30.50 | M6 zinc plated finish cage nut | 100 |
| <a href="#"><u>DGM901</u></a> | \$36.00 | M6 outdoor cage nut            | 100 |



| Screws                        |         |                                   |     |
|-------------------------------|---------|-----------------------------------|-----|
| Part Number                   | Price   | Description                       | Qty |
| <a href="#"><u>VTR616</u></a> | \$26.50 | M6 x 16mm, hex head flanged screw | 100 |
| <a href="#"><u>VTC122</u></a> | \$73.00 | screw, M12 x 20mm, 8mm Allen      | 100 |
| <a href="#"><u>VBC614</u></a> | \$31.50 | M6 x 14mm T30 Torx head screw     | 100 |
| <a href="#"><u>VTS616</u></a> | \$32.00 | M6 x 16mm T30 Torx pan head screw | 100 |
| <a href="#"><u>VBC616</u></a> | \$31.00 | M6 x 16mm T30 Torx head screw     | 100 |



# OKK Series Accessories



Easily find compatible OKK Series parts for your enclosure using the link button or QR code below:

### Configuration Tool

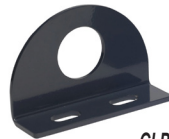


| Latch Handle            |         |  |                     |
|-------------------------|---------|--|---------------------|
| Part Number             | Price   | Description  | Drawing Link        |
| <a href="#">SRR773B</a> | \$81.00 | Quadritalia enclosure latch handle, replacement, keylocking, foldaway. (1) Yale-type key included. | <a href="#">PDF</a> |

| Eyebolts and Lifting Lugs |         |  |     |                     |
|---------------------------|---------|--|-----|---------------------|
| Part Number               | Price   | Description  | Qty | Drawing Link        |
| <a href="#">GLF812-K4</a> | \$29.00 | Quadritalia eyebolt, M12 x 1.5mm x 22mm, galvanized steel. | 4   | <a href="#">PDF</a> |
| <a href="#">GLP830</a>    | \$34.50 | Quadritalia bolt-on lifting lug, galvanized steel.         | 1   |                     |



[GLF812-K4](#)



[GLP830](#)

## Application

Mounting clips are used to attach side and rear panels to the vertical rails.

\* Assembly requires a T30 bit.

| Mounting Clips               |         |                                |     |
|------------------------------|---------|--------------------------------|-----|
| Part Number                  | Price   | Includes                       | Qty |
| <a href="#">CLK013-KIT2F</a> | \$43.50 | M6 hex nut and gasket included | 12  |

