

Current Transformers



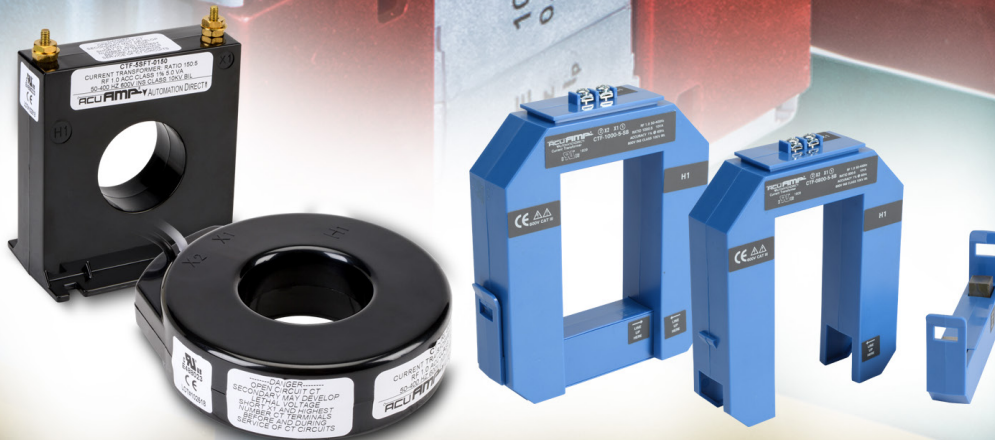
Up-to-date price list:
www.automationdirect.com/pricelist

FREE Technical Support:
www.automationdirect.com/support

FREE Videos:
www.automationdirect.com/videos

FREE Documentation:
www.automationdirect.com/documentation

FREE CAD drawings:
www.automationdirect.com/cad



ACUAMP® Current Transformers



Starting at
\$26.00

Solid Core AC Current Transformers

AcuAMP solid core current transformers are designed to provide a simple, inexpensive and accurate way to measure AC current flowing through a power conductor. The AC current measurement is transformed to a 0-5 Amp output that is proportional to the current flowing through the sensing window. This output can be used to provide a source for monitoring devices. For example, these current transformers work well with our Socomec Diris power monitors and our Trumeter panel meters.

Key features

- More economical than split core current transformers
- Solid construction adds accuracy
- Provides a 5A source for input to a monitor or meter (For ammeters, wattmeters, panel meters, instrumentation, and energy management systems).
- Two window sizes for smaller or larger wire sizes
- Panel mount versions available
- Helps limit downtime by providing preventative measurements



Starting at
\$94.00

AC Split-Core AC Current Transformers

AcuAMP Split-core current transformers are designed to provide a simple and inexpensive way to measure AC current flowing through a power conductor. The split-core design adds an installation benefit by allowing to open the sensing window and easily slide onto a conductor and snap core back together without having to disconnect any wires. The AC current measured is transformed to a 0-5 Amp output that is proportional to the current flowing through the sensing window. This output can be used to provide a source for ACT and ACTR series transducers devices such as monitoring devices.

Key features

- Split-core for retrofit applications
- Large sensing windows:
SA series 2.22" x 1.19"
SB series 3.49" x 2.36"
- Zinc-plated secondary terminals for added reliability
- Helps limit downtime by providing preventative measurements
- Compatible with standard power monitors and panel meters designed for 5A input.
- Saves space in control panels by remotely locating the sensing of the current closer to the load.