



CONSTRUCTION/CLASSIFICATION

Built by	Hyundai Heavy Industries
Year of construction	2012
Classification	Bureau Veritas \boxtimes HULL, \boxtimes MACH, Special Service Semi submersible heavy lift vessel, unrestricted navigation. AUT-DPS \boxtimes AUT-UMS(SS), CLEANSHIP, INWATERSURVEY, MACH
IMO number	9618783
Flag	Curaçao
Port of registry	Willemstad

MAIN DATA

Length overall	275.00 m
Breadth moulded/max	70.00 m / 78.75 m
Depth	15.50 m
Draft submerged at FPP/APP	31.00 / 31.00 m
Summer draft (B-100)	10.94 m
Deck space [l x w]	275.00 x 70.00 m
Deadweight	116,175 t
Trial speed	14.50 kn
Total installed power	28,500 kW
Main engines	2 x 8,700 kW and 2 x 4,350 kW
Main propulsion	2 x 12 MW CPP propellers

Azimuth thrusters	2 x 3,000 kW retractable with CPP propellers
Bow thruster	1 x 3,000 kW with CPP

NAVIGATION EQUIPMENT

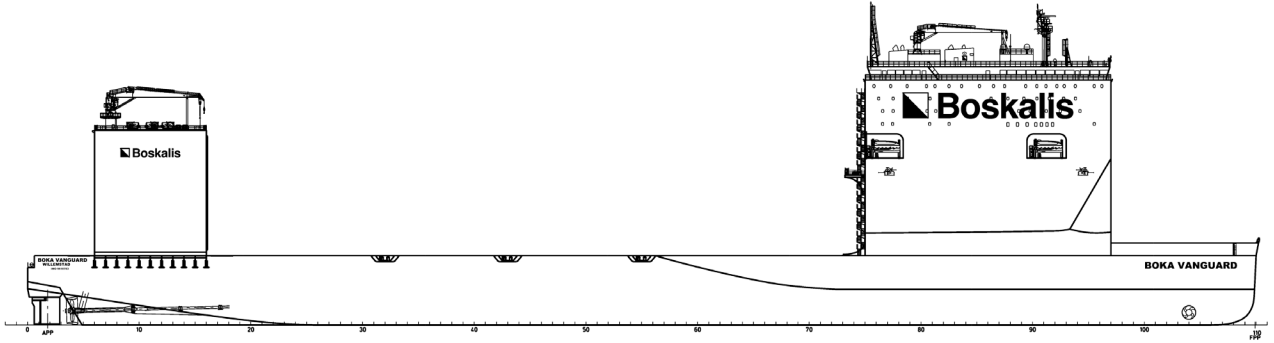
- 2 pcs DGPS
- 1 pcs Doppler speed log
- 2 pcs echo sounder
- 1 pcs navtex
- 1 pcs weatherfax
- 2 pcs ECDIS
- 2 pcs radar
- 1 pcs dual gyro compass
- SPOS - Ship performance optimisation system
- OCTOPUS - Octopus onboard system (ship motion monitoring and decision support system by Amarcn)

COMMUNICATIONS EQUIPMENT

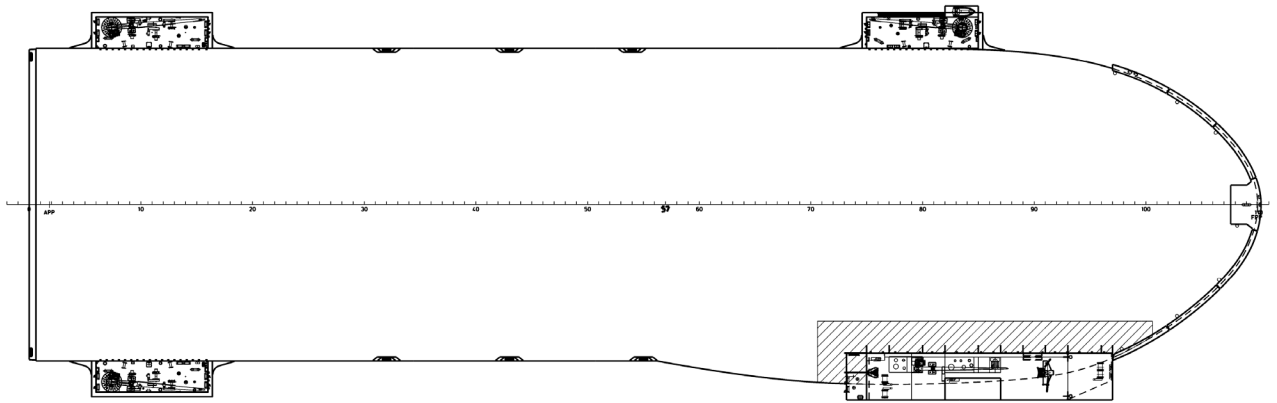
- Fully compliant with GMDSS A-3
- 1 pcs MF / HF radio station
- 1 pcs Inmarsat broadband
- 2 pcs Inmarsat-C
- 1 pcs SSAS
- 1 pcs AIS
- 4 pcs VHF-DSC
- 2 pcs EPIRB
- 2 pcs SART
- 3 pcs VHF handheld
- 10 pcs UHF handheld
- 1 pcs VSAT

BALLASTING

- 4 main ballast pumps 5,300 m³ / hr @ 50 m
- 1 ballast pump 1,500 m³ / hr @ 50 m
- 2 stripping pumps 400 m³ / hr @ 70 m
- 2 stripping ejectors 300 m³ / hr @ 20 m



SIDE VIEW



TOP VIEW DECK LEVEL