



Dynamic and Simplified Selectivity

Guinea customs now use dynamic selectivity to facilitate international trade by “controlling less, controlling better”.

Situation

At the Port of Conakry, all declarations were either selected for a physical examination (red lane, 55%) or a documentary check (yellow lane, 45%). Furthermore, 94% of declarations were selected for further random checks. Selectivity criteria were not updated regularly in ASYCUDAWorld as the risk management team lacked the necessary technical expertise.

Solution

The ASYCUDA Programme and Guinea customs developed a simplified interface for the creation and update of ASYCUDAWorld selectivity criteria. A dynamic selectivity mechanism which calculates the risk of fraud for each declaration, using historical data, was implemented.

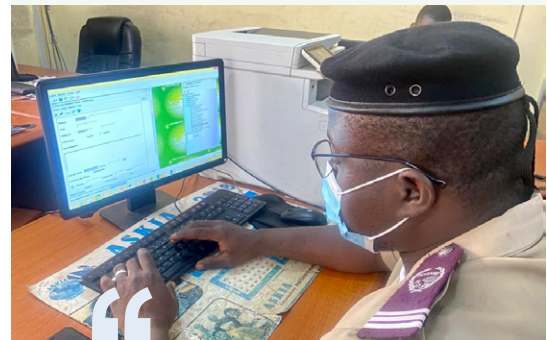
Result

Analytical reports are automatically generated in ASYCUDAWorld to assess the efficiency of the selectivity criteria used. Since its deployment in April 2021, and the ongoing population of the risk management database, improvements have been reported at the port:

- In Q1 2022, 93% of declarations identified by the system were deemed not to conform by customs officers
- 78% of declarations were selected through dynamic selectivity in Q1 2022, compared to 12.5% during the first month of implementation
- 10% of unselected declarations in Q1 2022, compared to 4% during the first month of implementation

93%

efficiency of selectivity criteria at the Port of Conakry in Q1 2022



The decision to examine is based on data and selectivity which routes all suspect declarations through the inspection channel and those assumed conform through the green channel to facilitate the processing and avoid wasting time.

”

*Mr. Karinka Konde,
President of the Guinean Committee for the Reform and Modernization of Customs*

Partner:



GUINEA

Dynamic and Simplified Selectivity

Total number of customs offices



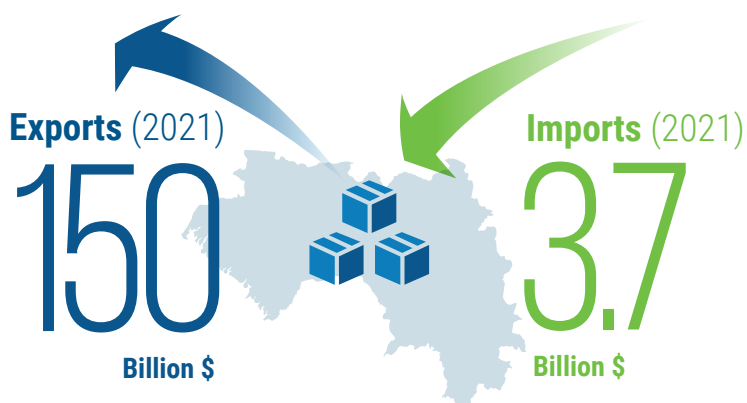
Volume of activity (2021)

3,047
Customs **manifests**

171,077
Import declarations

5,723
Export declarations

12,193
Transit declarations



Customs annual revenue evolution (Billion \$)

