

# PowerBroom™/attachments

PS344



Shindaiwa's Hybrid 4® Engine Technology blends the finest features of two-stroke and four-stroke technology. Hybrid 4 products offer:

- Environment-friendly low emissions levels
- Higher torque to the lower end for more power
- Fuel economy using 10 - 25% less fuel than equivalent two-stroke engines
- A low tone sound
- Reduced starting effort with built-in decompression
- Longer engine life due to dual-stage air filtration



Shindaiwa highly recommends Red Armor™ engine oil for carbon deposit removal and protection against future buildup. Visit [www.redarmoroil.com](http://www.redarmoroil.com) for more info



99909-33027  
12-Fin  
Rubber Paddles



80712  
Aggressive Nylon  
Brush



99909-11127  
Nylon Brush



80297  
Crimped Wire Brush



80275  
Cultivator

Shindaiwa's PowerBroom provides optimum performance and durability for season after season of outstanding operation on even the toughest jobs and in the harshest conditions. And each one is covered by a 2-year commercial warranty — dependability you can count on.

**2**year  
commercial  
warranty

**shindaiwa**®

*Carry the Legend™*

877.9.TORQUE • [www.shindaiwa.com](http://www.shindaiwa.com)

# PowerBroom™/attachments

## PS344

- Multiple brush types to fit any sweeping task
- Heavy-duty air filter element is easily accessible; no tools required for maintenance
- Ergonomic design for easier more comfortable handling
- Solid steel drive shaft
- Commercial-grade 34cc Hybrid 4 engine powers through thick dirt and gravel

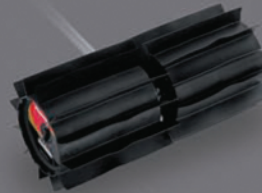


From construction sites and forest parks to golf courses and road-sides, the PS344 PowerBroom™ lets you clean in a fraction of the time.

|                 |                      |
|-----------------|----------------------|
| Displacement    | 34 cc                |
| Dry Weight      | 22.2 lbs. (10.1 kg)  |
| Carburetor      | Rotary               |
| Fuel Capacity   | 23.7 fl. oz (700 ml) |
| Fuel 50:1 Ratio | Fuel/mixing oil      |

## 99909-33027 12-Fin Rubber Paddles

- For sweeping anything from grass clippings to snow and gravel. The 12-fin rubber drum avoids damage to swept surfaces



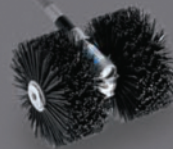
## 99909-11127 Nylon Brush

- For lighter-duty aggressive cleanup of heavy, loose dirt. Useful in flat-surface work, spreading liquids, and cleaning walkways and bike paths



## 80712 Aggressive Nylon Brush

- This brush is almost as aggressive as a crimped wire brush, at an economical price. Unlike the crimped wire brush, this one also cleans cracks and crevices



## 80287 Crimped Wire Brush

- Our most aggressive brush for the most demanding applications. It scours moss, dry mud, and loose paint and is useful for descaling



## 80275 Cultivator

- Turns soil for gardens, planting beds, and highway medians



Dealer imprint area.

**shindaiwa**<sup>®</sup>  
*Carry the Legend™*

877.9.TORQUE • [www.shindaiwa.com](http://www.shindaiwa.com)

MKT1020033 June 2010